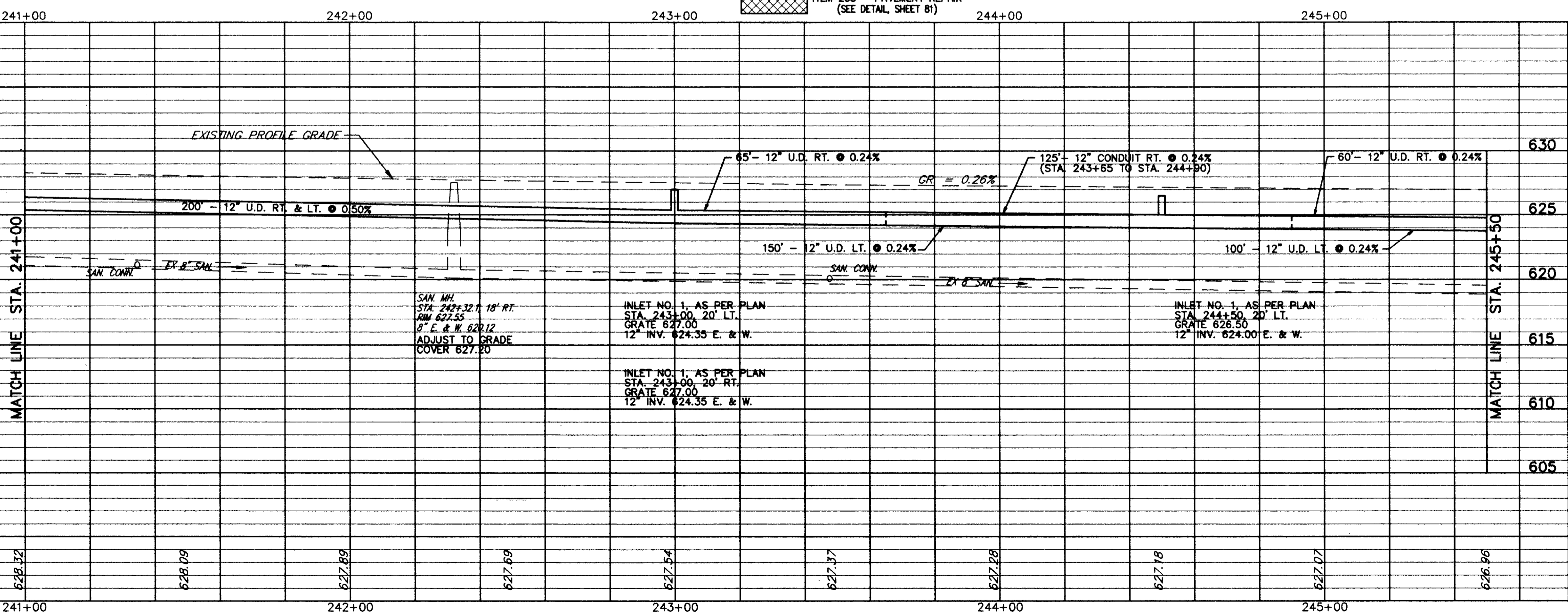


FOR TYPICAL SECTIONS SEE SHEET 3 THRU 6
 FOR BENCHMARKS SEE GENERAL NOTE SHEET 7
 FOR CROSS-SECTIONS SEE SHEETS 34 THRU 73
 FOR DRIVEWAY SCHEDULE & DETAILS SEE SHEET 79 & 80
 FOR PAVEMENT DETAILS SEE SHEET 81
 FOR TRAFFIC CONTROL DETAILS SEE SHEETS 84 THRU 104

ITEM	DESCRIPTION	UNIT	QUANTITY	PRICE	TOTAL
448	1-1/4\"/>				

REF	LOCATION	QTY.	PRICE	TOTAL
P-1	STA. 241+00 TO STA. 245+50. LT. & RT. = 11324 S.F.			
P-2	STA. 241+00 TO STA. 245+50. LT. = 2700 S.F.			
P-3	STA. 241+00 TO STA. 243+86. RT. = 1678 S.F.			
P-4	STA. 243+80 TO STA. 244+71. RT. = 364 S.F.			
P-5	STA. 244+68 TO STA. 245+50. RT. = 750 S.F.			
TOTALS				



REF	LOCATION	SQ.FT.	SQ.FT.
R-1	STA. 243+78 RT. TO STA. 243+83 RT.	25	25
R-2	STA. 244+71 RT. TO STA. 244+82 RT.	55	45
TOTALS		80	70

REF	LOCATION	LN.FT.	LN.FT.	EACH	EACH	LN.FT.
D-1	STA. 241+00 20\"/>					

PLAN & PROFILE STA. 241+00 TO STA. 245+50

COPYRIGHT - DATE: 01-16-96 09:30, CT CONSULTANTS INC. C:\24467\24467.DWG Scale 1"=20'