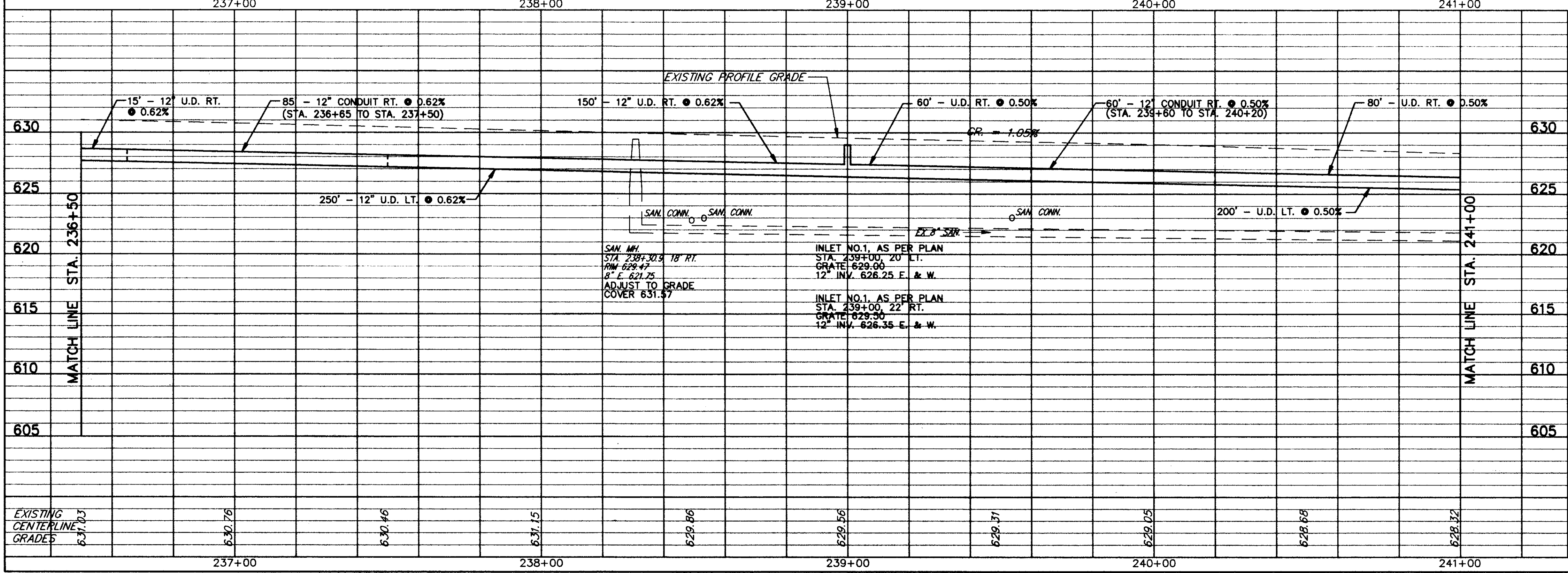


FOR TYPICAL SECTIONS SEE SHEET 3 THRU 6  
 FOR BENCHMARKS SEE GENERAL NOTE SHEET 7  
 FOR CROSS-SECTIONS SEE SHEETS 34 THRU 73  
 FOR DRIVEWAY SCHEDULE & DETAILS SEE SHEET 79 & 80  
 FOR PAVEMENT DETAILS SEE SHEET 81  
 FOR TRAFFIC CONTROL DETAILS SEE SHEETS 84 THRU 104

ITEM	DESCRIPTION	UNIT	QUANTITY	PRICE	TOTAL
609	CURB, TYPE 6	LN. FT.			52.0
448	1-1/4\"/>				

PAVEMENT	LOCATION	SO. YD.	SQ. YD.	LN. FT.	TOTAL
P-1	STA. 236+50 TO STA. 241+00, LT. & RT. = 1063.35 S.F.				
P-2	STA. 236+50 TO STA. 241+00, LT. = 2700 S.F.	116.7	300.0		
P-3	STA. 236+50 TO STA. 239+74 RT. = 2306 S.F.	99.6	256.2		
P-4	STA. 239+72 TO STA. 240+09, RT. = 148 S.F.		16.4		
P-5	STA. 240+05 TO STA. 241+00, RT. = 542 S.F.		23.4		
<b>TOTALS</b>		239.7	616.4	18.4	1181.6



REF	LOCATION	SO. YD.	SQ. FT.	LN. FT.	SQ. FT.	SQ. FT.
R-1	STA. 236+56 RT. TO STA. 236+80 RT.			32		
R-2	STA. 237+27 RT. TO STA. 237+62 RT.			39		
R-3	STA. 239+65 RT. TO STA. 239+73 RT.			18		
R-4	STA. 239+69 LT.			38		38
R-5	STA. 236+72 RT. TO STA. 236+79 RT.			35		35
R-6	STA. 236+56 RT. TO STA. 237+62 RT.	94.7				
R-7	STA. 237+31 RT. TO STA. 237+38 RT.			35		35
R-8	STA. 239+66 RT. TO STA. 239+72 RT.			30		30
R-9	STA. 240+06 RT. TO STA. 240+13 RT.			35		35
<b>TOTALS</b>		94.7	173	89	103	70

REF	LOCATION	LN. FT.	LN. FT.	EACH	EACH	LN. FT.
D-1	STA. 236+50 20' LT. TO STA. 239+00 20' LT.		10			240
D-2	STA. 236+50 20' RT. TO STA. 239+00 22' RT.	85	10			155
D-3	STA. 239+00 20' LT. TO STA. 241+00 20' LT.		10	1		190
D-4	STA. 239+00 22' RT. TO STA. 241+00 21' RT.	60	10	1		130
S-1	STA. 238+30.9 18' RT.				1	
<b>TOTALS</b>		145	40	2	1	715

PLAN & PROFILE STA. 236+50 TO STA. 241+00

COPYRIGHT - DATE: 01-16-96 09:30, CT CONSULTANTS, INC. C:\A2467\283MPP16.DWG, Scale: 1"=20'