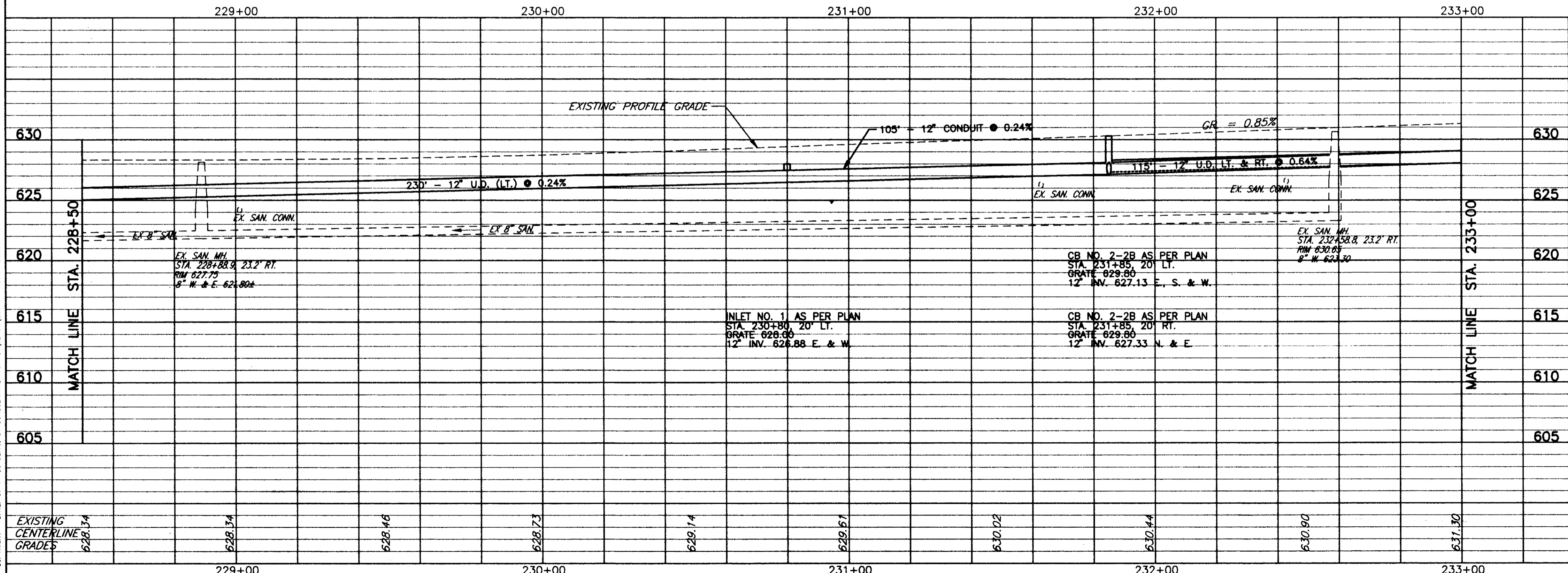


FOR TYPICAL SECTIONS SEE SHEET 3 THRU 6
 FOR BENCHMARKS SEE GENERAL NOTE SHEET 7
 FOR CROSS-SECTIONS SEE SHEETS 24 THRU 73
 FOR DRIVEWAY SCHEDULE & DETAILS SEE SHEET 79 & 80
 FOR PAVEMENT DETAILS SEE SHEET 81
 FOR TRAFFIC CONTROL DETAILS SEE SHEETS 84 THRU 104

ITEM 253 - PAVEMENT REPAIR (SEE DETAIL, SHEET 81)

REF	LOCATION	QTY	UNIT	AMOUNT	AMOUNT	AMOUNT	AMOUNT	AMOUNT	
411	6" STABILIZED CRUSHED AGGREGATE	CU.YD.	CU.YD.	9.3				32.1	
448	1-1/4" ASPH. CONC. SURFACE COURSE TYPE 1, PG64-22	CU.YD.	CU.YD.	5.9	9.3			60.5	
448	0" MIN. ASPH. CONC. INTERMEDIATE COURSE TYPE 1, PG64-22	CU.YD.	CU.YD.	10.4	16.7			161.1	
448	1-3/4" ASPH. CONC. INTERMEDIATE COURSE TYPE 2, PG64-22	CU.YD.	CU.YD.	14.6	16.1			40.4	
408	BITUMINOUS PRIME COAT (0.40 GAL./SQ.YD.)	GAL.	CU.YD.	15.0	120.0	14.6		16.1	
407	TACK COAT (0.10 GAL./SQ.YD.)	GAL.	CU.YD.	8.5	68.0	6.2		3.8	
407	TACK COAT (0.05 GAL./SQ.YD.)	GAL.	CU.YD.	116.2	116.2	116.2		281.1	
304	AGGREGATE BASE, AS PER PLAN	CU.YD.	CU.YD.	32.9	37.9			96.0	
301	7" BITUMINOUS AGGREGATE BASE, PG64-22	CU.YD.	CU.YD.	58.3	33.3			24.8	
254	1 1/4" PAVEMENT PLANNING BITUMINOUS	SQ.YD.	SQ.YD.	1162.4				1162.4	
253	PAVEMENT REPAIR	SQ.YD.	SQ.YD.	13.3				9.8	
203	SUBGRADE COMPACTION	SQ.YD.	SQ.YD.	42.8	110.0			231.1	
203	EXCAVATION NOT INCLUDING EMBANKMENT CONSTRUCTION	CU.YD.	CU.YD.	116.7	300.0			579.1	
				225.3	579.1	231.1	1162.4	112.6	232.0

REF	LOCATION	AMOUNT	AMOUNT	TOTALS
P-1	STA. 228+50 TO STA. 231+08 LT. = 1522 S.F.			
P-2	STA. 228+50 TO STA. 233+00 RT. = 2700 S.F.			
P-3	STA. 228+50 TO STA. 233+00 RT. & LT. = 10462 S.F.			
P-4	STA. 231+05 TO STA. 231+35 LT. = 120 S.F.			
P-5	STA. 231+85 LT. & RT. = 88 S.F.			
P-6	STA. 231+30 TO STA. 233+00 LT. = 990 S.F.			
		80	70	



REF	LOCATION	SQ.FT.	SQ.FT.
R-1	STA. 230+98 LT. TO STA. 231+06 LT.	40	35
R-2	STA. 231+32 LT. TO STA. 231+40 LT.	40	35
TOTALS		80	70

REF	LOCATION	12" CONDUIT LIN.FT.	12" CONDUIT LIN.FT.	CATCH BASIN, NO. 2-26, AS PER PLAN EACH	INLET NO. 1, AS PER PLAN EACH	10" SHALLOW PIPE FILTER WRAP, AS PER PLAN LIN.FT.
D-1	STA. 228+50 20'LT. TO STA. 230+80 20'LT.		10		1	220
D-2	STA. 230+80 20'LT. TO STA. 233+00 20'LT.	105		1		
D-3	STA. 231+85 20'LT. TO STA. 231+85 20'RT.	40		1		
D-4	STA. 231+85 20'LT. TO STA. 233+00 20'LT.		10			105
D-5	STA. 231+85 20'RT. TO STA. 233+00 20'RT.		10			105
TOTALS		145	30	2	1	430

PLAN & PROFILE STA. 228+50 TO STA. 233+00

COPYRIGHT - DATE: 01-11-96 08:10 CT CONSULTANTS INC. C:\P467\28.MPP\4.DWG Scale: 1"=20'