

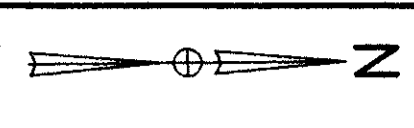
HSE #6314 CONCRETE
HSE #6300

THE KOTOCH FAMILY LIMITED PARTNERSHIP
Vol. 759 Pg. 905
(P.P. No. 18C-080-00-032)

CALC. BY: PSL
DATE: 2/78
CHKD. BY: WDB
DATE: 2/78

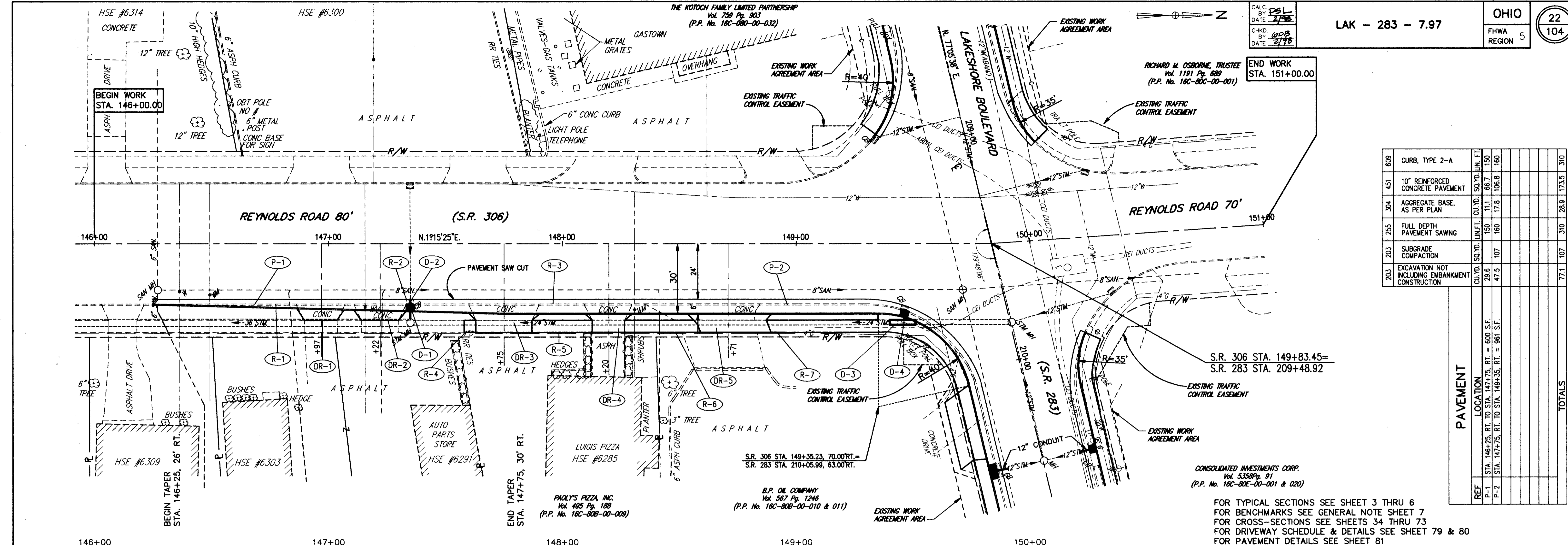
LAK - 283 - 7.97

OHIO
FHWA REGION 5
22
104



RICHARD M. OSBORNE, TRUSTEE
Vol. 1191 Pg. 689
(P.P. No. 18C-80C-00-001)

END WORK
STA. 151+00.00

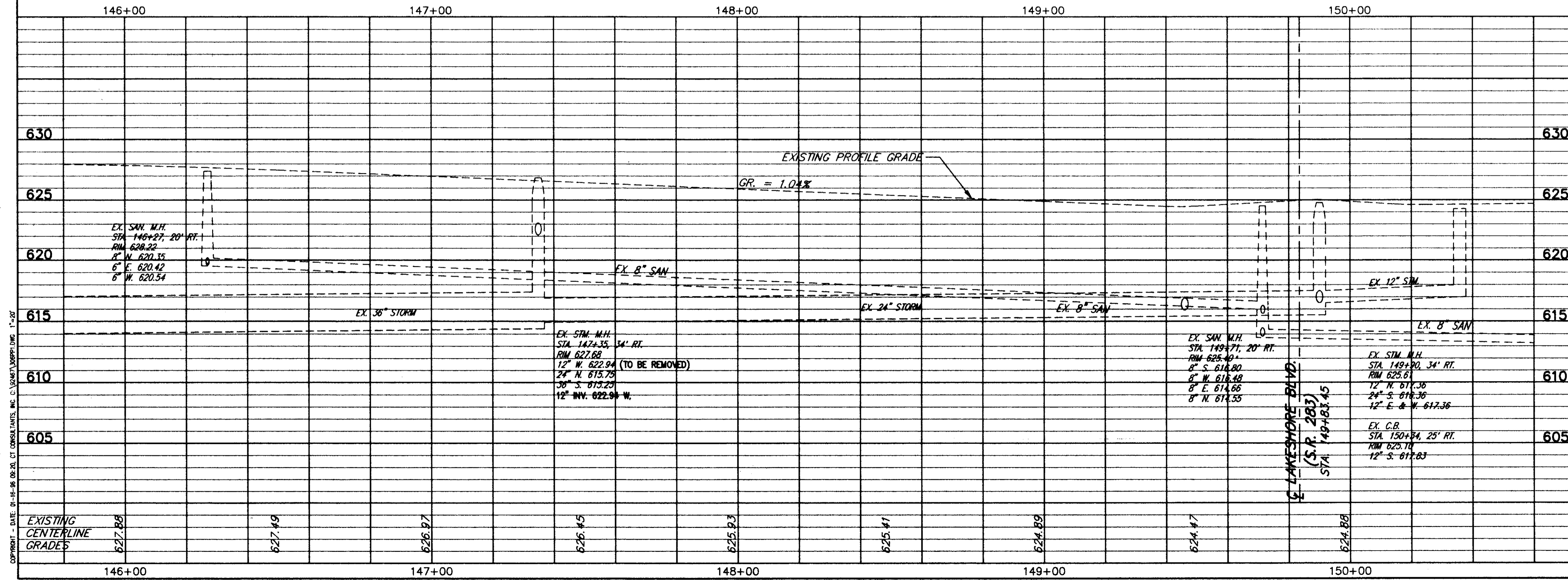


ITEM NO.	DESCRIPTION	CU. YD.	SQ. YD.	LN. FT.	EA.	TOTALS
608	CURB, TYPE 2-A					310
451	10" REINFORCED CONCRETE PAVEMENT					173.5
304	AGGREGATE BASE, AS PER PLAN					28.9
205	FULL DEPTH PAVEMENT SAWING					310
203	SUBGRADE COMPACTION					107
203	EXCAVATION NOT INCLUDING EMBANKMENT CONSTRUCTION					77.1
TOTALS						777.1

REF	LOCATION	CU. YD.	SQ. YD.	LN. FT.	EA.	TOTALS
P-1	STA. 146+25, RT. TO STA. 147+75, RT. = 600 S.F.	29.6				
P-2	STA. 147+75, RT. TO STA. 149+35, RT. = 961 S.F.	47.5				
TOTALS						77.1

CONSOLIDATED INVESTMENTS CORP.
Vol. 5358 Pg. 91
(P.P. No. 18C-80C-00-001 & 020)

FOR TYPICAL SECTIONS SEE SHEET 3 THRU 6
FOR BENCHMARKS SEE GENERAL NOTE SHEET 7
FOR CROSS-SECTIONS SEE SHEETS 34 THRU 37
FOR DRIVEWAY SCHEDULE & DETAILS SEE SHEET 79 & 80
FOR PAVEMENT DETAILS SEE SHEET 81
FOR TRAFFIC CONTROL DETAILS SEE SHEETS 84 THRU 104



REF	LOCATION	SQ. YD.	SQ. FT.	LN. FT.	EA.	SQ. FT.
R-1	STA. 146+25, RT. TO STA. 149+35, RT.					310
R-2	STA. 147+35, RT.					1
R-3	STA. 146+25, RT. TO STA. 149+35, RT.	72.9				
R-4	STA. 147+56, RT. TO STA. 147+61, RT.		25			25
R-5	STA. 147+85, RT. TO STA. 148+12, RT.		130			130
R-6	STA. 148+26, RT. TO STA. 148+58, RT.		160			160
R-7	STA. 148+88, RT. TO STA. 149+35, RT.		235			235
TOTALS		72.9	550	310	1	550

REF	LOCATION	LN. FT.	LN. FT.	EA.	LN. FT.	EA.
D-1	STA. 147+35, 28.9' RT. TO STA. 147+35, 34' RT.	5		1	10	
D-2	STA. 147+35, 24' RT. TO STA. 147+35, 28.9' RT.	5				
D-3	STA. 149+40, 34' RT. TO STA. 149+52, 34' RT.		12			1
D-4	STA. 149+46, 31.3' RT.	5		1	10	
TOTALS		15	12	2	20	1

S.R. 306 PLAN & PROFILE STA. 146+00 TO STA. 151+00