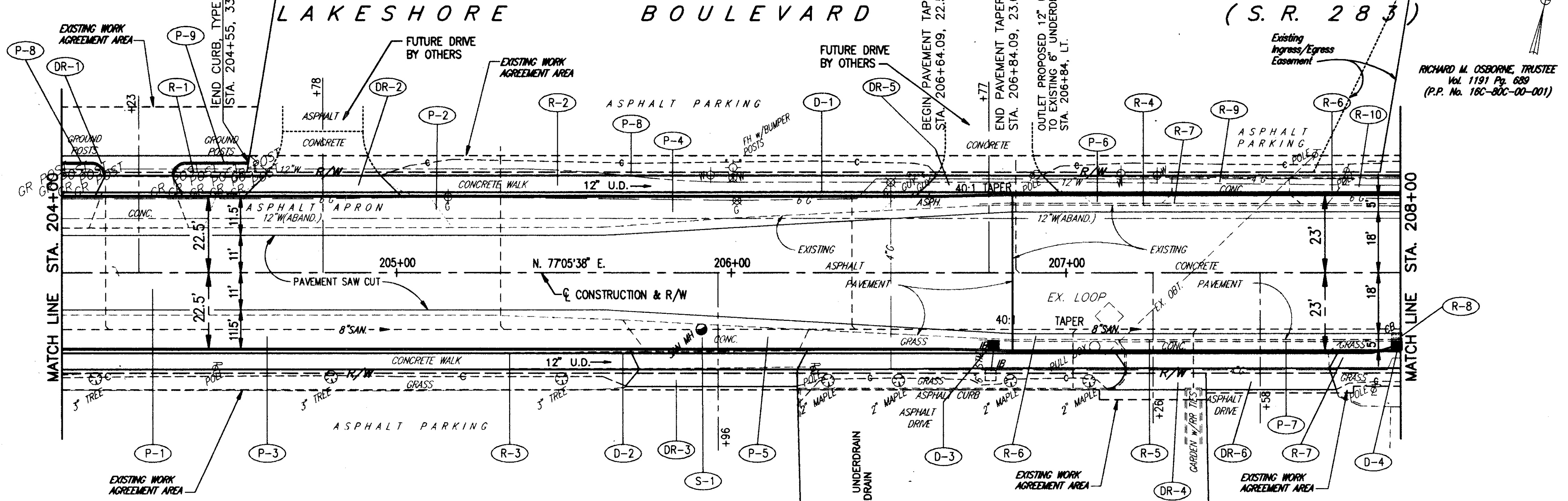


MENTOR PLAINS METHODIST CHURCH, INC.
Vol. 402 Pg. 371
Vol. 446 Pg. 18
(P.P. Nos. 16C-90C-00-010 thru 014)

MENTOR-LAKESHORE L.L.C.
Doc. No. 970020829
(P.P. Nos. 16C-90C-00-002, 003 & 005 thru 009)



FOR TYPICAL SECTIONS SEE SHEETS 3 THRU 6
FOR BENCHMARKS SEE GENERAL NOTE SHEET 7
FOR CROSS-SECTIONS SEE SHEETS 34 THRU 73
FOR DRIVEWAY SCHEDULE & DETAILS SEE SHEET 79 & 80
FOR PAVEMENT DETAILS SEE SHEET 81
FOR TRAFFIC CONTROL DETAILS SEE SHEETS 84 THRU 104

MENTOR PLAZA, LTD.
VOL. 95 PG. 494
VOL. 153 PG. 102
(P.P. Nos. 16C-080-00-002, 003, 004, 019)

8834 BRECKSHIRE ROAD REALTY COMPANY
VOL. 647 PG. 267
(P.P. Nos. 16C-080-00-005)

THE KOTOCH FAMILY LIMITED PARTNERSHIP
VOL. 759 PG. 903
(P.P. Nos. 16C-080-00-032)

STATION	204+00	205+00	206+00	207+00	208+00
630					
625		400' - 12" U.D. (LT.) @ 0.24%			
620		400' - 12" U.D. (RT.) @ 0.24%			
615					
610					
605					
EXISTING CENTERLINE GRADES	626.93	626.83	626.82	626.75	626.73

ITEM NO.	DESCRIPTION	UNIT	AMOUNT	PRICE	TOTAL
609	CURB, TYPE 6	LN. FT.	162		162
609	CURB, TYPE 2-A	LN. FT.	162		162
451	10" REINFORCED CONCRETE PAVEMENT	SQ. YD.	27.4		27.4
448	1-1/4" ASPH. CONC. SURFACE COURSE, TYPE 1, PG64-22	CU. YD.	7.2		7.2
448	0" MIN. ASPH. CONC. INTERMEDIATE COURSE TYPE 1, PG64-22	CU. YD.	11.0		11.0
448	1-3/4" ASPH. CONC. INTERMEDIATE COURSE TYPE 2, PG64-22	CU. YD.	10.1		10.1
408	BITUMINOUS PRIME COAT (0.40 GAL./SQ.YD.)	GAL.	83.0		83.0
407	TACK COAT (0.05 GAL./SQ.YD.)	GAL.	10.4		10.4
407	TACK COAT (0.10 GAL./SQ.YD.)	GAL.	78.9		78.9
304	AGGREGATE BASE, AS PER PLAN	CU. YD.	23.0		23.0
304	4" AGGREGATE BASE, AS PER PLAN	CU. YD.	23.0		23.0
301	7" BITUMINOUS AGGREGATE BASE, PG64-22	CU. YD.	40.2		40.2
255	FULL DEPTH PAVEMENT SAWING	LN. FT.	116		116
254	1 1/4" PAVEMENT PLANING BITUMINOUS	SQ. YD.	789.1		789.1
203	SUBGRADE COMPACTION	SQ. YD.	6.34		6.34
203	EXCAVATION NOT INCLUDING EMBANKMENT CONSTRUCTION	CU. YD.	271.2		271.2
TOTALS			271.2		271.2

PAVEMENT	LOCATION	SQ. YD.	LN. FT.	LN. FT.	SQ. FT.
P-1	STA. 204+00 TO 206+84, LT. & RT. = 7102 S.F.	80.5	207.0		1663 S.F.
P-2	STA. 204+00 TO 205+62, LT. = 1863 S.F.	80.5	207.0		1863 S.F.
P-3	STA. 204+00 TO 205+62, RT. = 1863 S.F.	80.5	207.0		1863 S.F.
P-4	STA. 205+62 TO 206+84, LT. = 986 S.F.	42.6	109.6		986 S.F.
P-5	STA. 205+62 TO 206+84, RT. = 986 S.F.	42.6	109.6		986 S.F.
P-6	STA. 206+84 TO 208+00, LT. = 580 S.F.	12.5	31.2		580 S.F.
P-7	STA. 206+84 TO 208+00, RT. = 580 S.F.	12.5	31.2		580 S.F.
P-8	STA. 204+00, 33' LT. TO 204+13, 29' LT.				
P-9	STA. 204+33, 29' LT. TO 204+55, 33' LT.				
TOTALS		271.2	634	789.1	271.2

ROADWAY	LOCATION	SQ. YD.	SQ. FT.	LN. FT.	LN. FT.	SQ. FT.
R-1	STA. 204+00, LT. TO STA. 204+58, LT.			58		
R-2	STA. 204+00, LT. TO STA. 208+00, LT. = 283 L.F. *		1825			1648
R-3	STA. 204+00, RT. TO STA. 208+00, RT. = 296 L.F. *		1695			1685
R-4	STA. 206+74, LT. TO STA. 208+00, LT.			126		
R-5	STA. 206+74, RT. TO STA. 208+00, RT.			126		
R-6	STA. 206+84, LT. TO STA. 208+00, LT.	25.8				
R-7	STA. 206+84, RT. TO STA. 208+00, RT.	25.8				
R-8	STA. 207+98.9, 19.9' RT.					1
R-9	STA. 207+32 TO STA. 207+67, LT.	32.1				
R-10	STA. 207+78 TO STA. 208+00, LT.	16.0				
TOTALS		99.7	3520	252	58	1

DRAINAGE & SANITARY	LOCATION	LN. FT.	LN. FT.	EACH	LN. FT.	EACH	LN. FT.	EACH	LN. FT.
D-1	STA. 204+00 TO STA. 208+00, LT.			400					
D-2	STA. 204+00 TO STA. 208+00, RT.	10		400					
D-3	STA. 206+78.4, 22.4' RT.		1						
D-4	STA. 207+98.9, 23' RT.	6	1		1			10	
S-1	STA. 205+91, 17' RT.					1			
TOTALS		10	6	2	800	1	1	1	10

PLAN & PROFILE STA. 204+00 TO STA. 208+00