

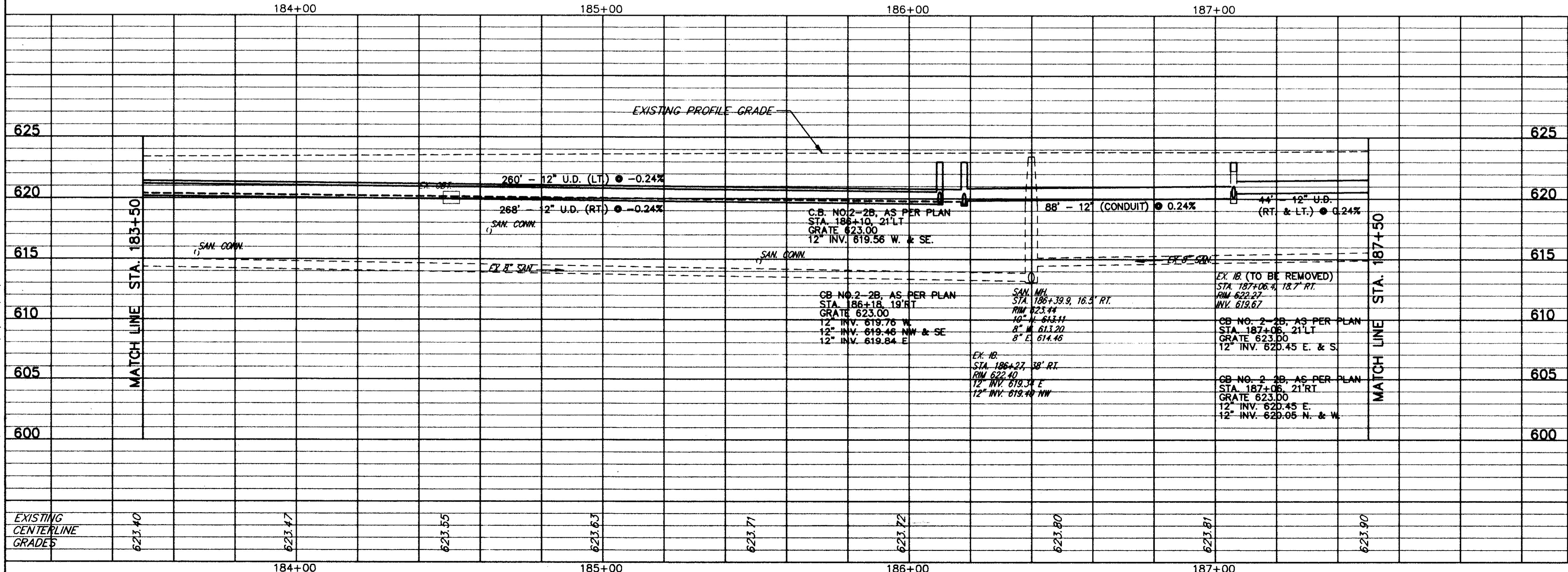
NOTE: DEFLECT UNDERDRAIN PIPE TO AVOID EXISTING UTILITY POLE

FOR TYPICAL SECTIONS SEE SHEETS 3 THRU 6  
 FOR BENCHMARKS SEE GENERAL NOTE SHEET 7  
 FOR CROSS-SECTIONS SEE SHEETS 34 THRU 73  
 FOR DRIVEWAY SCHEDULE & DETAILS SEE SHEETS 79 THRU 80  
 FOR PAVEMENT DETAILS SEE SHEET 81  
 FOR TRAFFIC CONTROL DETAILS SEE SHEETS 84 THRU 104

ITEM 253 - PAVEMENT REPAIR  
 (SEE DETAIL, SHEET 81)

ITEM NO.	DESCRIPTION	UNIT	QUANTITY	UNIT PRICE	TOTAL
448	1-1/4" ASPH. CONC. SURFACE COURSE TYPE 1, PG64-22	CU.YD.	40	6.5	260.0
448	0" MIN. ASPH. CONC. INTERMEDIATE COURSE TYPE 1, PG64-22	CU.YD.	16.0	6.5	104.0
448	1-3/4" ASPH. CONC. INTERMEDIATE COURSE TYPE 2, PG64-22	CU.YD.	9.0	9.0	81.0
411	6" STABILIZED CRUSHED AGGREGATE	CU.YD.	10.4	9.0	93.6
408	BITUMINOUS PRIME COAT (0.40 GAL./SQ.YD.)	GAL.	74.5	1.6	119.2
407	TACK COAT (0.05 GAL./SQ.YD.)	GAL.	9.32	2.5	23.3
407	TACK COAT (0.10 GAL./SQ.YD.)	GAL.	9.27	3.0	27.8
304	AGGREGATE BASE, AS PER PLAN	CU.YD.	34.9	11.51	399.7
301	7" BITUMINOUS AGGREGATE BASE, PG64-22	CU.YD.	36.0	12.5	450.0
254	1 1/4" PAVEMENT PLANING, BITUMINOUS	SO.YD.	10.6	10.4	110.2
253	PAVEMENT REPAIR	SO.YD.	9.8	10.7	104.9
203	SUBGRADE COMPACTION	CU.YD.	186.3	1.6	298.1
203	EXCAVATION NOT INCLUDING EMBANKMENT CONSTRUCTION	CU.YD.	72.6	1.6	116.2
	<b>TOTALS</b>		<b>1151</b>		<b>1151</b>

REF	LOCATION	CU.YD.	SO.YD.	GA.	RT.	S.F.
P-1	STA. 183+50 TO 187+50, LT. & RT. = 10359 S.F.					
P-2	STA. 185+50 TO 186+38, LT. = 1677 S.F.					
P-3	STA. 183+50 TO 186+34, RT. = 1668 S.F.					
P-4	STA. 186+75 TO STA. 187+50, LT. = 417 S.F.					
P-5	STA. 186+61 TO STA. 187+50, RT. = 489 S.F.					
P-6	STA. 187+06 LT. TO STA. 187+06, RT. = 88 S.F.					
P-7	STA. 186+14, LT. TO STA. 186+16, RT. = 96 S.F.					
P-8	STA. 186+26, RT. TO STA. 186+70, RT. = 176 S.F.					
	<b>TOTALS</b>					<b>1839</b>



REF	LOCATION	SQ.FT.	EACH	SQ.FT.
R-1	STA. 186+14 RT. TO STA. 186+31 RT.	65		64
R-2	STA. 186+26 LT. TO STA. 186+34 LT.	43		38
R-3	STA. 186+64 RT. TO STA. 186+72 RT.	35		40
R-4	STA. 186+75 LT. TO STA. 186+86 LT.	40		35
R-5	STA. 187+06, 19' RT.		1	
	<b>TOTALS</b>	<b>183</b>	<b>1</b>	<b>177</b>

REF	LOCATION	UN.FT.	UN.FT.	UN.FT.	EACH	EACH	UN.FT.
D-1	STA. 183+50 21' LT. TO STA. 186+10 21' LT.		10				250
D-2	STA. 183+50 21' RT. TO STA. 186+18 19' RT.		10				258
D-3	STA. 187+06 21' LT. TO STA. 187+06.4 18.7' RT.	42			1		
D-4	STA. 187+06 21' LT. TO STA. 187+50 21' LT.		10				34
D-5	STA. 187+06.4 21' RT. TO STA. 187+50 21' RT.		10				34
D-6	STA. 186+10, 19' LT. TO STA. 186+18, 19' RT.	40			1		
S-1	STA. 186+40, 16' RT.					1	
D-7	STA. 186+18, 19' RT. TO STA. 186+27, 38' RT.	24		24	1		
D-8	STA. 186+18, 19' RT. TO STA. 187+06, 21' RT.	88			1		
	<b>TOTALS</b>	<b>170</b>	<b>40</b>	<b>24</b>	<b>4</b>	<b>1</b>	<b>576</b>

PLAN & PROFILE STA. 183+50 TO STA. 187+50