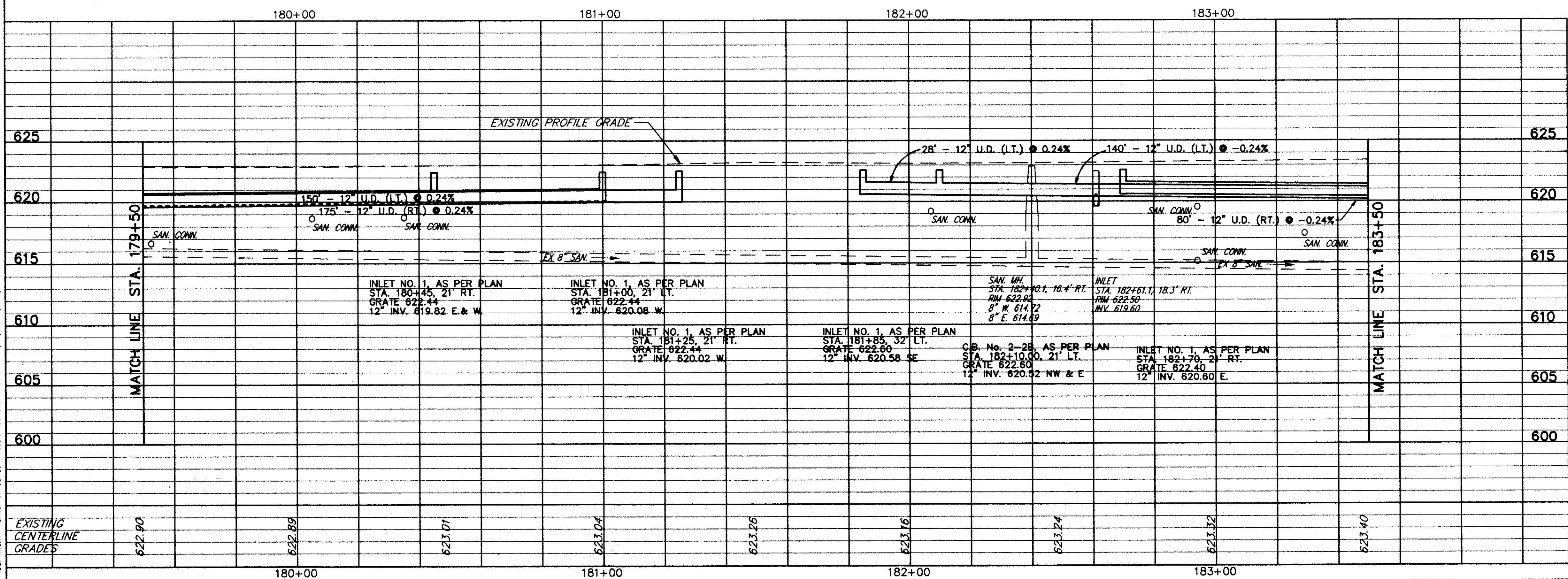


FOR TYPICAL SECTIONS SEE SHEETS 3 THRU 6
 FOR BENCHMARKS SEE GENERAL NOTE SHEET 7
 FOR CROSS-SECTIONS SEE SHEETS 34 THRU 73
 FOR DRIVEWAY SCHEDULE & DETAILS SEE SHEETS 79 THRU 80
 FOR PAVEMENT DETAILS SEE SHEET 81

ITEM 253 - PAVEMENT REPAIR
 (SEE DETAIL, SHEET 81)

ITEM NO.	DESCRIPTION	UNIT	QUANTITY	UNIT PRICE	TOTAL
448	1-1/4" ASPH. CONC. SURFACE COURSE TYPE 1, PG64-22	CU.YD.	42.6	4.0	170.6
448	0" MIN. ASPH. CONC. INTERMEDIATE COURSE TYPE 1, PG64-22	CU.YD.	17.0	4.0	68.0
448	1-3/4" ASPH. CONC. INTERMEDIATE COURSE TYPE 2, PG64-22	CU.YD.	5.5	4.3	23.7
411	6" STABILIZED CRUSHED AGGREGATE	CU.YD.	6.5	5.2	33.8
408	BITUMINOUS PRIME COAT (0.40 GAL./SQ.YD.)	GAL.	45.5	6.0	273.0
407	TACK COAT (0.05 GAL./SQ.YD.)	GAL.	5.89	7.2	42.4
407	TACK COAT (0.10 GAL./SQ.YD.)	GAL.	122.5	5.5	673.8
304	AGGREGATE BASE, AS PER PLAN	CU.YD.	21.5	20.1	431.5
301	7" BITUMINOUS AGGREGATE BASE, PG64-22	CU.YD.	22.1	20.9	461.8
254	1 1/4" PAVEMENT PLANING, BITUMINOUS	SQ.YD.	1225	20.8	25480.0
203	SUBGRADE COMPACTION	CU.YD.	44.7	106.8	4774.6
203	EXCAVATION NOT INCLUDING EMBANKMENT CONSTRUCTION	CU.YD.	178.3	458.0	81648.6
TOTALS			1225	88.1	108111.1



ROADWAY			
REF	LOCATION	SQ.FT.	EACH
R-1	STA. 181+18 LT. TO STA. 181+27 LT.	43	40
R-2	STA. 181+36 RT. TO STA. 181+43 RT.	15	35
R-3	STA. 181+86 RT. TO STA. 181+94 RT.	40	40
R-4	STA. 181+84 LT. TO STA. 182+10 LT.	140	130
R-5	STA. 182+60, 18 RT.		1
TOTALS		238	245

DRAINAGE & SANITARY					
REF	LOCATION	12" CONDUIT, TYPE F	CATCH BASIN, NO. 2-28, AS PER PLAN	INLET, NO. 1, AS PER PLAN	12" SHALLOW PIPE UNDERDRAIN, W/ FILTER WRAP, AS PER PLAN
REF	LOCATION	LN.FT.	EACH	EACH	LN.FT.
D-1	STA. 179+50 21' LT. TO STA. 181+00 21' LT.	10	1	140	
D-2	STA. 179+50 21' RT. TO STA. 181+25 21' RT.	20	2	155	
D-3	STA. 181+85 32' LT. TO STA. 182+10 21' LT.	28	1		
D-4	STA. 182+10 21' LT. TO STA. 183+40 21' LT.	10	1	130	
D-5	STA. 182+70 21' RT. TO STA. 183+50 21' RT.	10	1	70	
TOTALS		78	6	495	1

PLAN & PROFILE STA. 179+50 TO STA. 183+50

COPYRIGHT - DATE: 01-08-86 14:55:01 CT CONSULTANTS INC. H:\CT\92467\CAD\92RMPF2.DWG. Scale: 1"=20'