

FED. RD. DIST. NO.	STATE	PROJECT	FISCAL YEAR
10	OHIO		1939

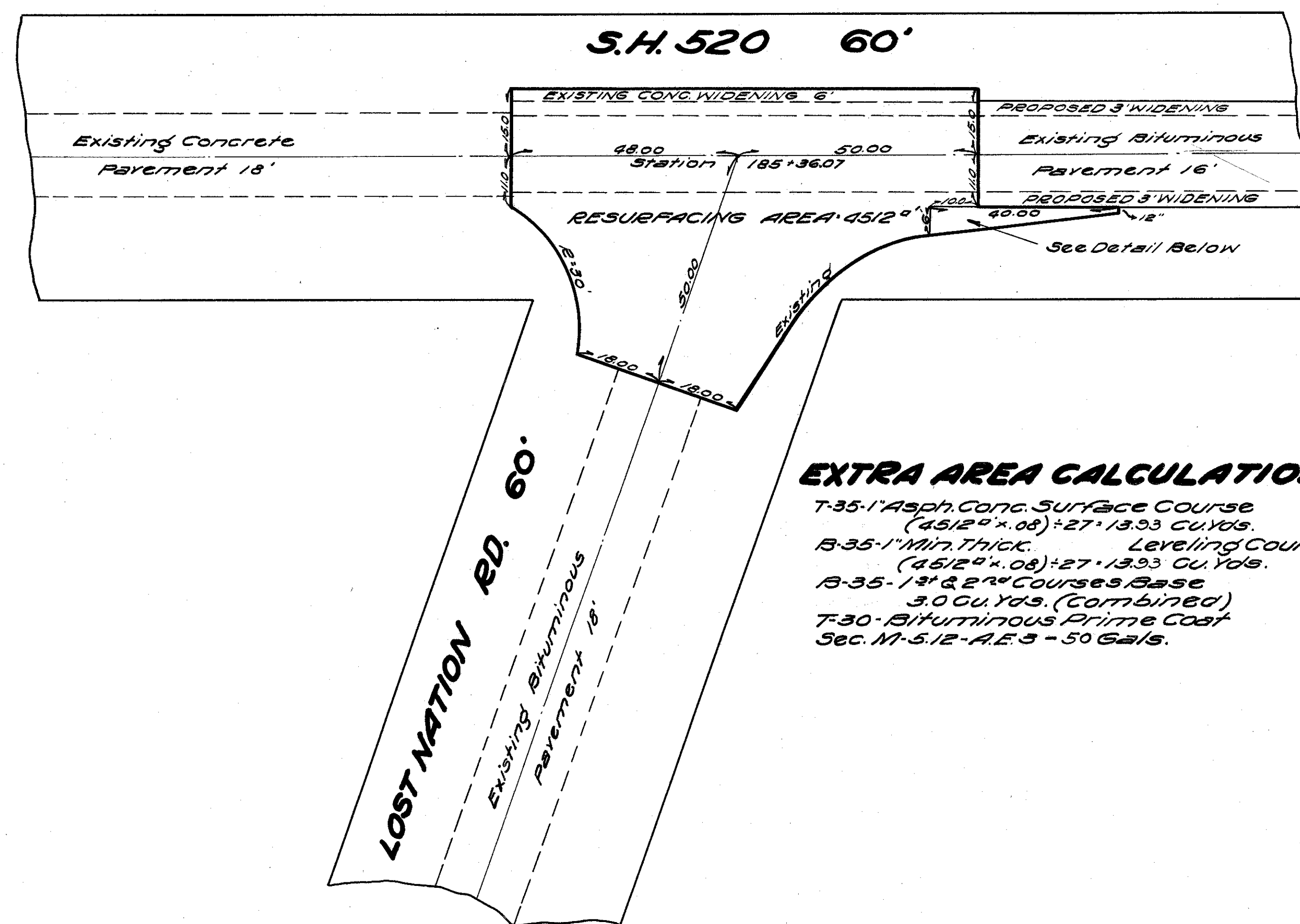
5  
9

RAINSVILLE-EUCLID RD.  
S.H. 520 SEC. 'D' &  
"MENTOR-ON-THE-LAKE (PT.)"  
LAKE COUNTY

# DETAIL OF INTERSECTIONS

S.H. 520 PAINSVILLE-EUCLID SEC. 'D'

SCALE 1"=20'0"

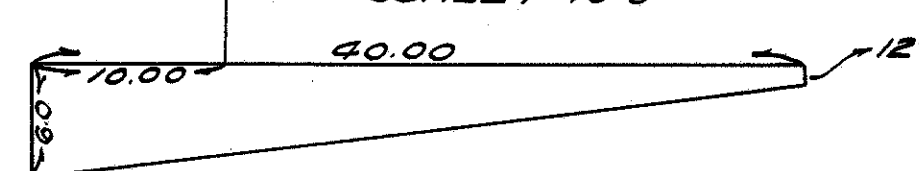


### EXTRA AREA CALCULATIONS

T-35-1" Asph. Conc. Surface Course  
(4512' x .08) = 27.1393 Cu. Yds.  
B-35-1" Min. Thick. Leveling Course  
(4512' x .08) = 27.1393 Cu. Yds.  
B-35-1" & 2" Courses Base  
3.0 Cu. Yds. (Combined)  
T-30- Bituminous Prime Coat  
Sec. M-5.12-A.E.3 = 50 Gals.

### DETAIL WEDGE COURSE

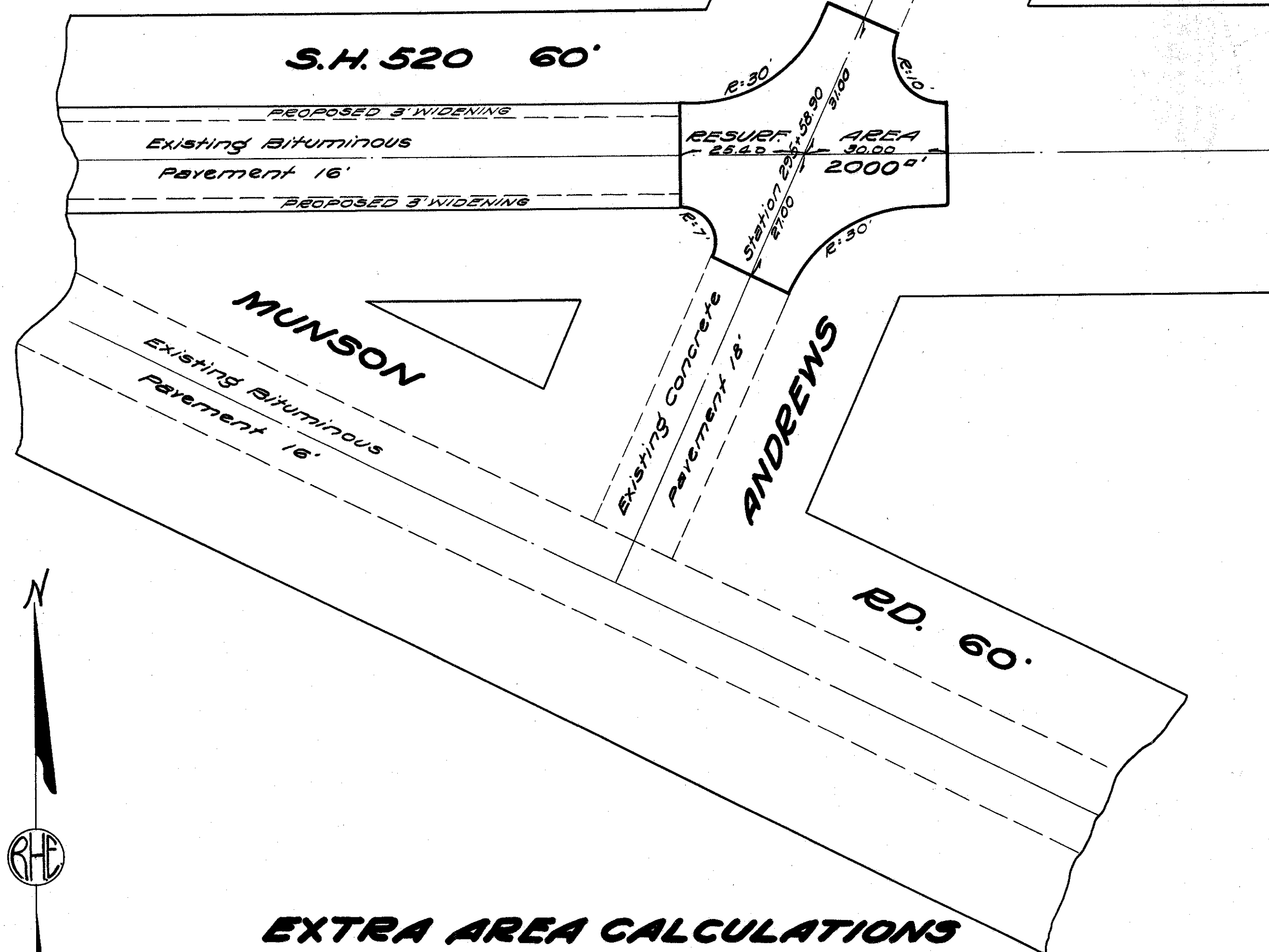
SCALE 1"=10'0"



### EXTRA AREA WEDGE COURSE

T-35-1" Asph. Conc. Surface Course 0.93 Cu. Yds.  
B-35-1" Min. Thick. Leveling Course 0.93 Cu. Yds.  
B-35-3" Asph. Conc. 1" Base Course 1.6 Cu. Yds.  
B-35-3" Asph. Conc. 2" Base Course 1.6 Cu. Yds.  
I-19-1 1/4" Insulation Course 15.6 sq. Yds.

E-10-Sealing (only) of Edges of Existing Pavement  
using Bituminous Material Sec. M-5.12, A.E.3 applied  
at rate of .15 gals per sq. yd. = 16 Lin. Ft.



### EXTRA AREA CALCULATIONS

T-35-1" Asph. Conc. Surface Course  
(2000' x .08) = 27.617 Cu. Yds.  
B-35-1" Min. Thick. Leveling Course  
(2000' x .08) = 27.617 Cu. Yds.  
B-35-1" & 2" Base Courses  
1.0 Cu. Yd. (Combined)  
T-30- Bituminous Prime Coat  
Sec. M-5.12-A.E.3 = 23 Gals.