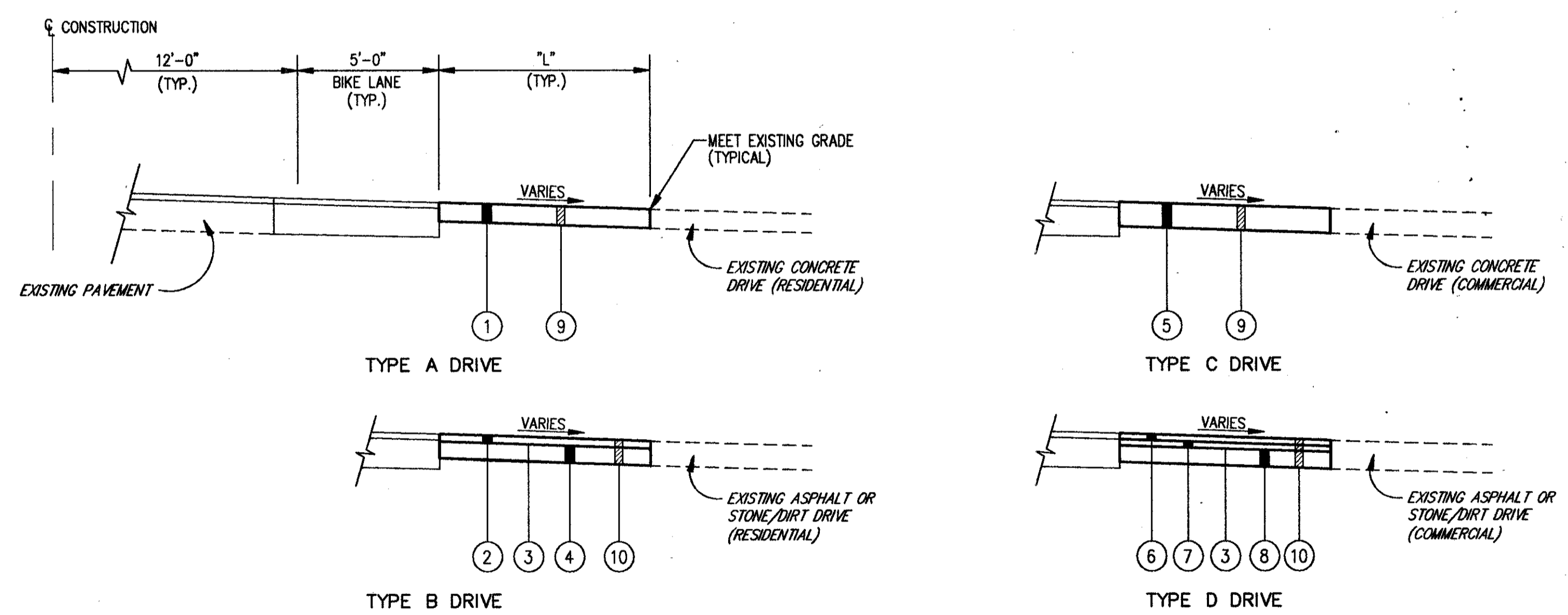
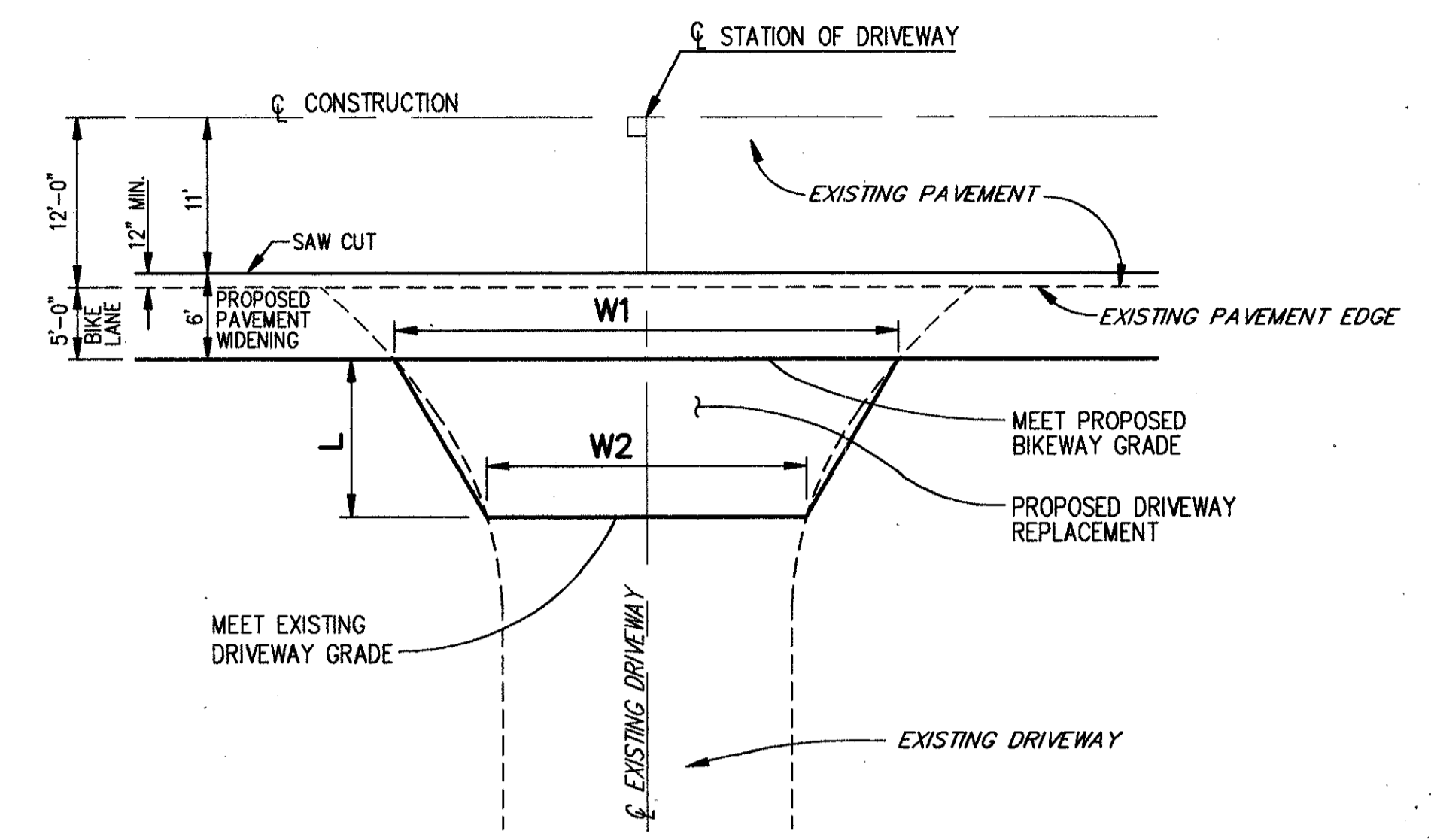


DRIVEWAY DETAILS

DRIVEWAY SCHEDULE								ITEM 202	ITEM 203	ITEM 304	ITEM 402	ITEM 404	ITEM 408	ITEM 452								
SHEET NO.	REF NO.	LOCATION (STA., LT. or RT.)	DRIVE TYPE	W1	W2	L	AREA	PAVEMENT REMOVED	EXCAVATION 8" DEPTH	EXCAVATION 11" DEPTH	6" AGGREGATE BASE	8" AGGREGATE BASE	1-3/4" ASPHALT CONCRETE, AC-20 (DRIVEWAYS)	1-1/4" ASPHALT CONCRETE, AC-20 (DRIVEWAYS)	2" ASPHALT CONCRETE, AC-20 (DRIVEWAYS)	BITUMINOUS PRIME COAT (@ 0.40 GAL./SQ. YD.)	6" PLAIN CONCRETE PAVEMENT	8" PLAIN CONCRETE PAVEMENT				
				LIN. FT.	LIN. FT.	LIN. FT.	SQ. FT.	SQ. YD.	CU. YD.	CU. YD.	CU. YD.	CU. YD.	CU. YD.	CU. YD.	CU. YD.	CU. YD.	GAL.	SQ. YD.	SQ. YD.			
13	DR-1	118+87, LT.	A	27	15	8	168	12	1.1									18.7				
13	DR-2	119+30, RT.	D	43	27.5	8	262			9.6		7.0	1.5	1.1		13						
13	DR-3	119+48, LT.	B	28	16	8	176		4.4		3.3				1.1		8					
13	DR-4	120+80, LT.	B	27	15	8	168		4.2		3.1				1.0		7					
13	DR-5	121+67, LT.	B	29	16	8	180		4.5		3.3				1.1		8					
14	DR-1	122+07, LT.	B	20.5	15	8	142		3.5		2.6				0.9		6					
14	DR-2	123+60, LT.	B	29.5	22	9	232		5.7		4.3				1.4		10					
14	DR-3	125+16, LT.	B	23	16	11	215		5.3		4.0				1.3		10					
14	DR-4	125+19, RT.	A	23.5	17.5	11	225	25										25.0				
14	DR-5	125+91.5, RT.	A	15	10	7.5	94	14										10.5				
14	DR-6	126+33, LT.	B	27	17.5	11	245		6.0		4.5				1.5		11					
15	DR-1	126+79.5, LT.	B	25	16	11	225		5.6		4.2				1.4		10					
15	DR-2	126+97.5, RT.	A	18.5	16	7.5	129	21										14.3				
15	DR-3	127+68, RT.	A	18.5	16	7.5	129	21										14.3				
15	DR-4	127+72.5, LT.	B	13	12.5	11	140		3.5		2.6				0.9		6					
15	DR-5	128+39, LT.	B	30.5	23.5	11	297		7.3		5.5				1.8		13					
15	DR-6	128+93, RT.	A	19.5	16.5	7.5	135	20										15.0				
15	DR-7	129+27.5, LT.	B	19	10.5	11	162		4.0		3.0				1.0		7					
15	DR-8	129+67, RT.	A	16	12.5	7.5	107	16										11.8				
15	DR-9	130+39, RT.	A	19	17	7.5	135	15										15.0				
16	DR-1	132+39.5, LT.	A	34	24.5	11.4	333	47										37.0				
16	DR-2	133+01, RT.	B	17	9.5	4	53		1.3		1.0				0.3		2					
16	DR-3	133+61, LT.	B	19.5	10.5	6.7	100		2.5		1.9				0.6		4					
17	DR-1	135+78, LT.	A	24	18.5	5.7	121	31										13.4				
17	DR-2	138+20.5, LT.	B	31.5	29.5	6.5	198		4.9		3.7				1.2		9					
18	DR-1	138+81, LT.	B	18	12.5	6.5	99		2.5		1.9				0.6		4					
18	DR-2	139+98.5, RT.	B	21.5	18	4	79		2.0		1.5				0.5		4					
18	DR-3	140+92, LT.	B	23	16	7	137		3.4		2.5				0.8		6					
18	DR-4	142+43.5, LT.	D	33	27	7.1	213			7.2		5.3	1.2	0.8			9					
19	DR-1	142+97, RT.	D	59	56	3.7	213			7.2		5.3	1.2	0.8			9					
20	DR-1	155+06.5, RT.	C	33	24	6.8	194	35										21.6				
21	DR-1	157+38, RT.	C	37	25	9	279	57										31.0				
21	DR-2	160+48.5, RT.	D	58	44	8.5	434			14.7		10.8	2.3	1.7			19					
22	DR-1	160+83.5, RT.	D	43	30	7.3	266			9.0		6.6	1.4	1.0			12					
23	DR-1	164+98.3, RT.	D	82	76	8.2	648			22.0		16.0	3.5	2.5			29					
23	DR-2	167+95, RT.	D	19	17	8	144			4.9		3.6	0.8	0.6			6					
24	DR-1	168+56.5, RT.	C	112	106	8.1	883	153										98.1				
24	DR-2	171+13.5, RT.	D	150	145	2	295			10.0		7.3	1.6	1.1			13					
25	DR-1	173+55, RT.	A	11.3	10	8.2	87	15										9.7				
25	DR-2	174+08, RT.	A	11.5	9.7	8.6	91	15										10.1				
26	DR-1	176+14, LT.	A	15	11	3.6	47	13										5.2				
26	DR-2	176+40.5, RT.	A	15	10.3	10.9	138	20										15.3				
26	DR-3	176+52, LT.	B	21	15.5	6	110		2.7		2.0				0.7		5					
26	DR-4	176+87, LT.	B	22.5	15	8.3	156		3.9		2.9				1.0		7					
TOTALS								530	78.3	84.6	57.8	61.9	13.5	9.6	19.1	247	215.3	150.7				
SHEET TOTALS								530	163		120	14	29	247	216	151						

NOTE: SHEET TOTALS ARE CARRIED TO THE GENERAL SUMMARY



TYPICAL DRIVEWAY SECTIONS

NO SCALE

- LEGEND
- ① ITEM 452 - 6" PLAIN CONCRETE PAVEMENT
 - ② ITEM 404 - 2" ASPHALT CONCRETE, AC-20 (DRIVEWAYS)
 - ③ ITEM 408 - BITUMINOUS PRIME COAT (@ 0.40 GAL./SQ. YD.)
 - ④ ITEM 304 - 6" AGGREGATE BASE, AS PER PLAN
 - ⑤ ITEM 452 - 8" PLAIN CONCRETE PAVEMENT
 - ⑥ ITEM 404 - 1 1/4" ASPHALT CONCRETE, AC-20 (DRIVEWAYS)
 - ⑦ ITEM 402 - 1 3/4" ASPHALT CONCRETE, AC-20 (DRIVEWAYS)
 - ⑧ ITEM 304 - 8" AGGREGATE BASE, AS PER PLAN
 - ⑨ ITEM 202 - PAVEMENT REMOVED
 - ⑩ ITEM 203 - EXCAVATION NOT INCLUDING EMBANKMENT CONSTRUCTION