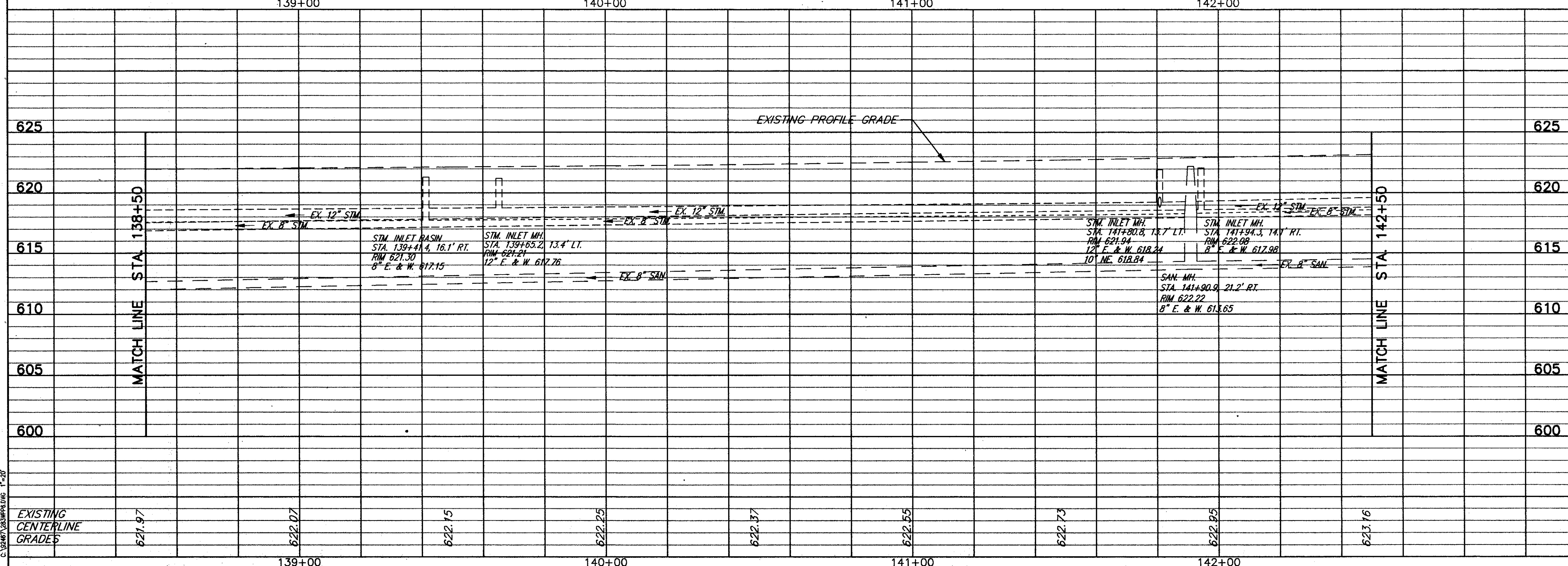


FOR TYPICAL SECTIONS SEE SHEET 3
 FOR BENCHMARKS SEE GENERAL NOTE SHEET 4
 FOR CROSS-SECTIONS SEE SHEETS 37 THRU 39
 FOR DRIVEWAY SCHEDULE & DETAILS SEE SHEET 53
 FOR PAVEMENT DETAILS SEE SHEET 54
 FOR TRAFFIC CONTROL DETAILS SEE SHEETS 55 THRU 57
 FOR WATERWORK DETAILS SEE SHEET 58

ITEM NO.	DESCRIPTION	UNIT	QUANTITY	AMOUNT
203	EXCAVATION, NOT INCLUDING EMBANKMENT CONSTRUCTION	CU.YD.	1285	15
254	1-1/4" PAVEMENT PLANNING, BITUMINOUS	CU.YD.	50	21
411	6" STABILIZED CRUSHED AGGREGATE	CU.YD.	53	2.3
203	SUBGRADE COMPACTION	SQ.YD.	38	15
407	TACK COAT (@ 0.10 GAL./SQ.YD.)	GAL.	174	4.3
304	4" AGGREGATE BASE	CU.YD.	42	1.8
301	7" BITUMINOUS AGGREGATE BASE, AC-20	CU.YD.	7.4	0.3
402	1-3/4" ASPHALT CONCRETE, AC-20	CU.YD.	149	6.2
403	0" MIN. ASPHALT CONCRETE, AC-20 (1/2" AVG.)	CU.YD.	248	10.3
404	1-1/4" ASPHALT CONCRETE, AC-20	CU.YD.	8.6	0.4
TOTALS			174	50.5



ROADWAY			
REF	LOCATION	SQ.FT.	AMOUNT
R-1	STA. 138+90.5 TO ELMWOOD AVE., RT.	56	36
R-2	ELMWOOD AVE. TO STA. 139+38.5, RT.	43	40
R-3	STA. 139+24.0 TO ELMWOOD AVE., LT.	26	36
R-4	ELMWOOD AVE. TO STA. 139+68.8, LT.	38	33
R-5	STA. 141+37.7 TO WINDEMERE DR., RT.	45	37
R-6	WINDEMERE DR. TO STA. 141+88.3, RT.	42	38
R-7	STA. 141+46.6 TO WINDEMERE DR., LT.	32	35
R-8	WINDEMERE DR. TO STA. 141+98.5, LT.	54	39
TOTALS		336	294

DRAINAGE					
REF	LOCATION	EACH	AMOUNT	EACH	AMOUNT
D-1	STA. 139+00, 21.5' LT. TO 13.5' LT.	1	12	1	
D-2	STA. 139+85, 21.5' LT. TO 13.5' LT.	1	12	1	
D-3	STA. 141+15, 21.5' LT. TO 13.5' LT.	1	12	1	
D-4	STA. 142+10, 21' LT. TO 14' LT.	1	11	1	
D-5	STA. 140+50, 19' RT. TO 15' RT.	1	8	1	
D-6	STA. 141+97, 19' RT. TO 141+94.3, 14.1' RT.	6	1	1	1
D-7	STA. 139+33, 20.5' LT.				1
D-8	STA. 139+41.4, 16.1' RT.				1
D-9	STA. 139+65.2, 13.4' LT.				1
D-10	STA. 141+80.8, 13.7' LT.				1
TOTALS		1	4	14	47

PLAN & PROFILE STA. 138+50 TO STA. 142+50