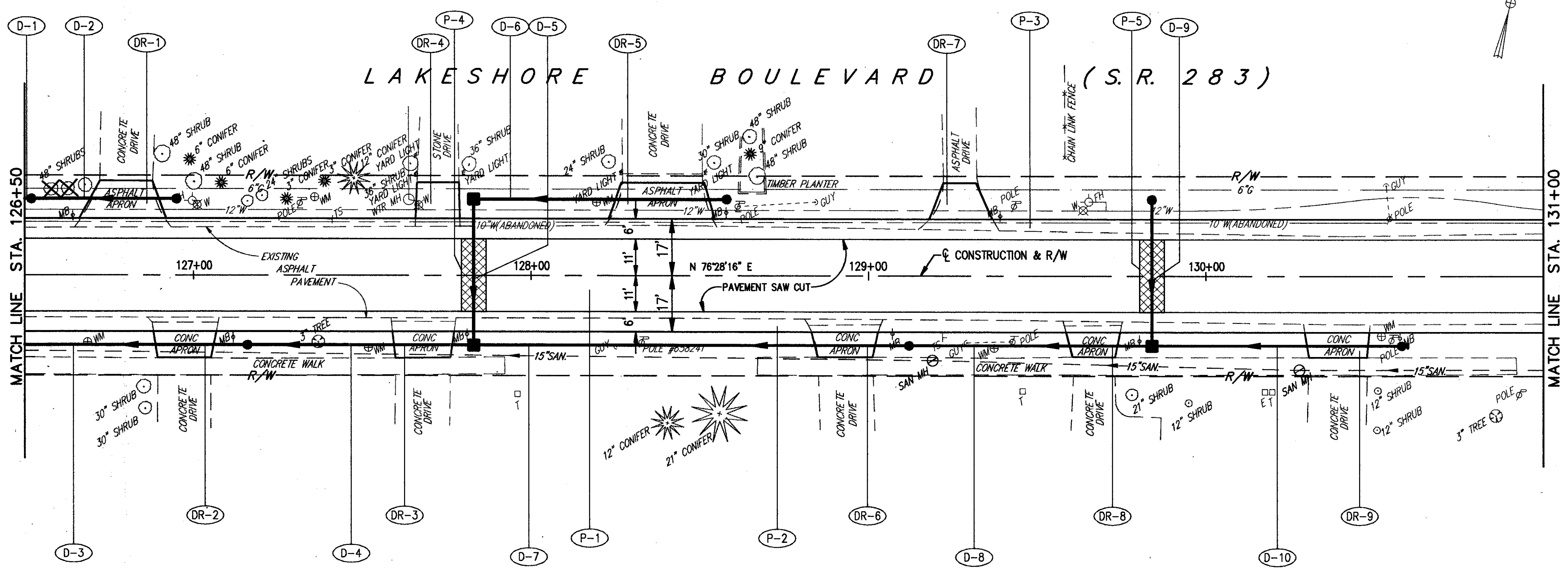
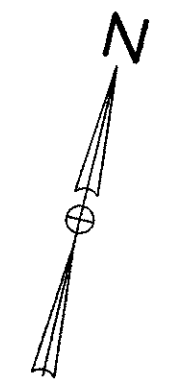
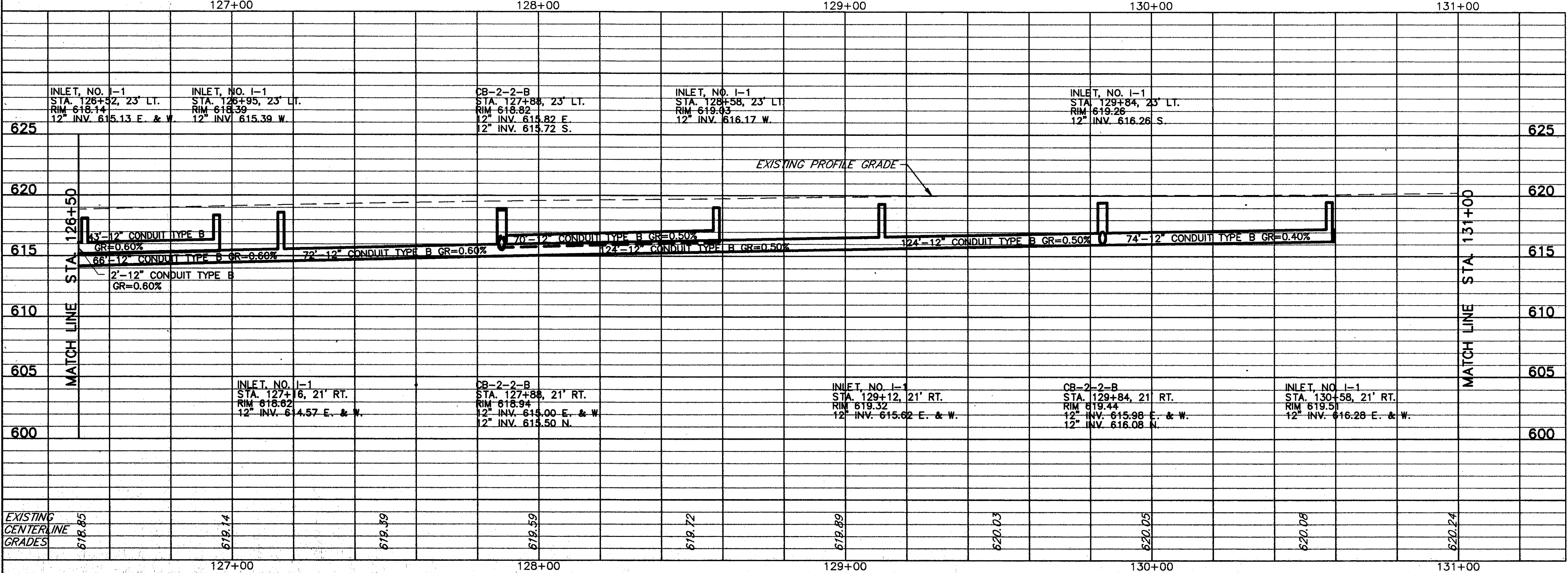


ITEM 253 - PAVEMENT REPAIR
 (SEE DETAIL, SHEET 54)



ITEM NO.	DESCRIPTION	CU. YD.	SQ. YD.	NO.	NO.	NO.	NO.	NO.	NO.
253	PAVEMENT REPAIR								40
203	EXCAVATION, NOT INCLUDING EMBANKMENT CONSTRUCTION								222
254	1-1/4" PAVEMENT PLANING, BITUMINOUS		1100						1100
411	6" STABILIZED CRUSHED AGGREGATE								26.9
203	SUBGRADE COMPACTION								600
407	TACK COAT (@ 0.10 GAL./SQ. YD.)								170
304	4" AGGREGATE BASE								66.6
301	7" BITUMINOUS AGGREGATE BASE, AC-20								116.6
402	1-3/4" ASPHALT CONCRETE, AC-20								31.2
403	0" MIN. ASPHALT CONCRETE, AC-20 (1/2" AVG.)								15.3
404	1-1/4" ASPHALT CONCRETE, AC-20								15.3
TOTALS									

REF	LOCATION	CU. YD.	SQ. YD.	NO.	NO.	NO.	NO.	NO.	NO.
P-1	STA. 126+50 TO 131+00, LT. & RT. = 15,300 SF.	59.0	15.3						
P-2	STA. 126+50 TO 131+00, RT. = 2700 SF.								
P-3	STA. 126+50 TO 131+00, LT. = 2700 SF.								
P-4	STA. 127+84 TO 127+92, 11' LT. & 11' RT.								
P-5	STA. 129+80 TO 129+88, 11' LT. & 11' RT.								
TOTALS									



FOR TYPICAL SECTIONS SEE SHEET 3
 FOR BENCHMARKS SEE GENERAL NOTE SHEET 4
 FOR CROSS-SECTIONS SEE SHEETS 31 THRU 33
 FOR DRIVEWAY SCHEDULE & DETAILS SEE SHEET 53
 FOR PAVEMENT DETAILS SEE SHEET 54
 FOR TRAFFIC CONTROL DETAILS SEE SHEETS 55 THRU 57
 FOR WATERWORK DETAILS SEE SHEET 58

DRAINAGE		12" CONDUIT TYPE B	INLET, NO. I-1	CATCH BASIN, CB-2-2-B
REF	LOCATION	LN. FT.	EACH	EACH
D-1	STA. 126+50, 23' LT. TO 126+52, 23' LT.	2	1	
D-2	STA. 126+52, 23' LT. TO 126+95, 23' LT.	43	1	
D-3	STA. 126+50, 21' RT. TO 127+16, 21' RT.	66	1	
D-4	STA. 127+16, 21' RT. TO 127+88, 21' RT.	72		1
D-5	STA. 127+88, 21' RT. TO 127+88, 23' LT.	44		1
D-6	STA. 127+88, 23' LT. TO 128+58, 23' LT.	70	1	
D-7	STA. 127+88, 21' RT. TO 129+12, 21' RT.	124	1	
D-8	STA. 129+12, 21' RT. TO 129+84, 21' RT.	72		1
D-9	STA. 129+84, 21' RT. TO 129+84, 23' LT.	44	1	
D-10	STA. 129+84, 21' RT. TO 130+58, 21' RT.	74	1	
TOTALS		611	7	3

COPYRIGHT - DATE: 05-25-98 10:00, DT CONSULTANTS INC. © 18247921 283WP3.DWG Scale: 1"=20'