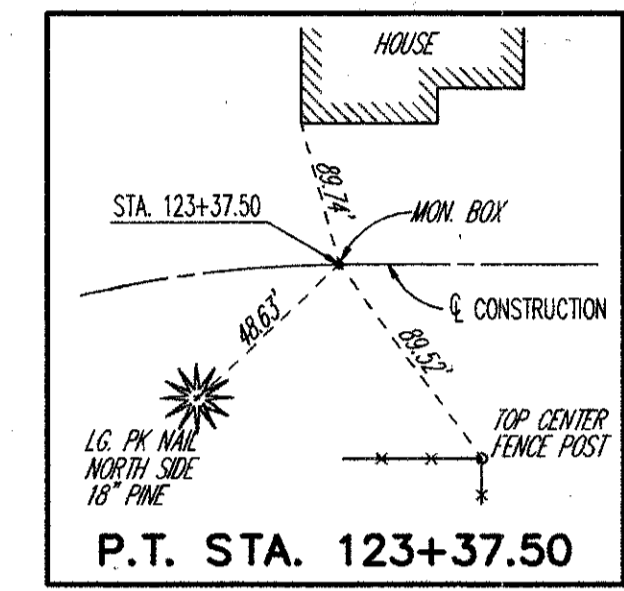
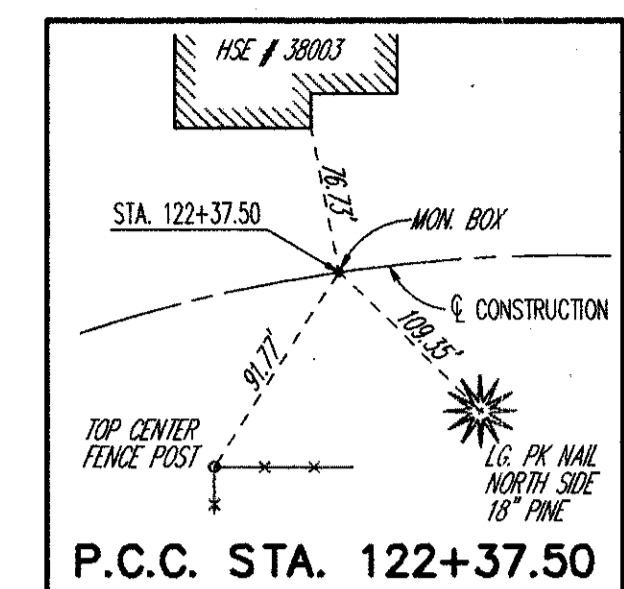
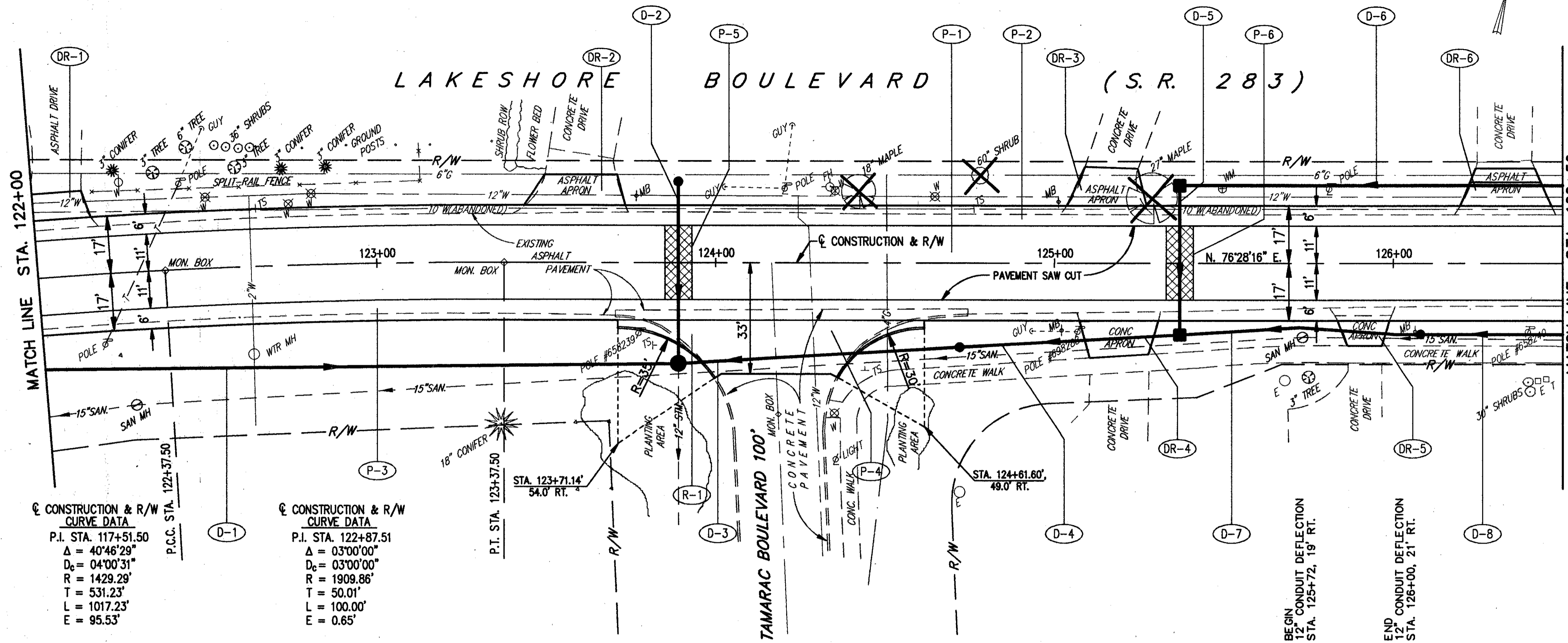


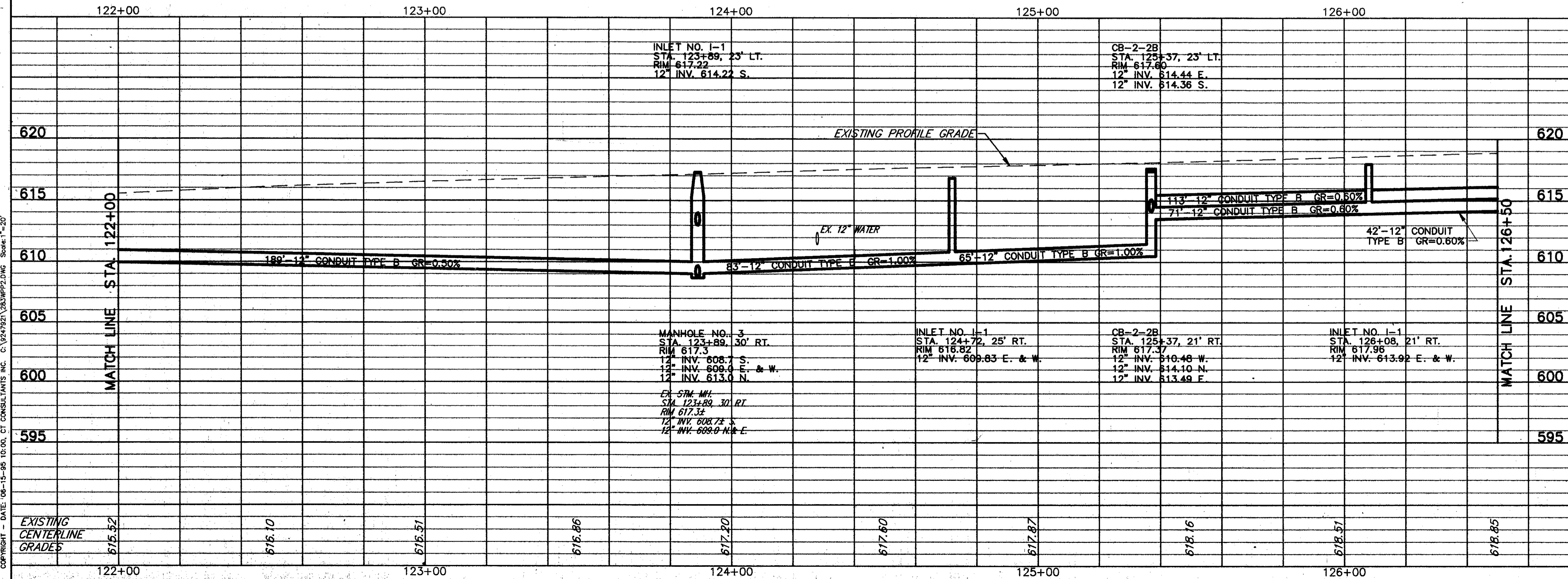
ITEM 253 - PAVEMENT REPAIR
(SEE DETAIL, SHEET 54)



NO.	DESCRIPTION	UNIT	AMOUNT	TOTAL
203	EXCAVATION, NOT INCLUDING EMBANKMENT CONSTRUCTION	CU.YD.	116	116
310	3" SUBBASE	CU.YD.	103	103
253	PAVEMENT REPAIR	SQ.YD.	20	20
609	CURB, TYPE 2A	LMFT.	65	65
254	1-1/4" PAVEMENT PLANING, BITUMINOUS	SQ.YD.	1100	1100
411	6" STABILIZED CRUSHED AGGREGATE	CU.YD.	13.3	13.3
203	SUBGRADE COMPACTION	SQ.YD.	300	300
407	TACK COAT @ 0.10 GAL./SQ.YD.	GAL.	174	174
304	4" AGGREGATE BASE	CU.YD.	33.3	33.3
301	7" BITUMINOUS AGGREGATE BASE, AC-20	CU.YD.	58.4	58.4
402	1-3/4" ASPHALT CONCRETE, AC-20	CU.YD.	14.6	14.6
403	0" MIN. ASPHALT CONCRETE, AC-20 (1/2" AVG.)	CU.YD.	14.6	14.6
404	1-1/4" ASPHALT CONCRETE, AC-20	CU.YD.	107	107
452	9" PLAIN CONCRETE PAVEMENT	SQ.YD.	107	107
		TOTALS	292	292

FOR TYPICAL SECTIONS SEE SHEET 3
FOR BENCHMARKS SEE GENERAL NOTE SHEET 4
FOR CROSS-SECTIONS SEE SHEETS 29 THRU 31
FOR DRIVEWAY SCHEDULE & DETAILS SEE SHEET 53
FOR PAVEMENT DETAILS SEE SHEET 54
FOR TRAFFIC CONTROL DETAILS SEE SHEETS 55 THRU 57
FOR WATERWORK DETAILS SEE SHEET 58
FOR INTERSECTION DETAIL SEE SHEET 54

REF	LOCATION	SQ.YD.
P-1	STA. 122+00 TO 126+50, LT. & RT. = 15,643 S.F.	
P-2	STA. 122+00 TO 126+50, LT. = 2700 S.F.	
P-3	STA. 122+00 TO 126+50, RT. = 2700 S.F.	
P-4	STA. 123+71.14 TO 124+61.60, RT. = 960 S.F.	
P-5	STA. 123+85 TO 123+93, 11' LT. & 11' RT.	
P-6	STA. 125+33 TO 125+41, 11' LT. & 11' RT.	
TOTALS		107



REF	LOCATION	SQ.YD.
R-1	TAMARAC BLVD. 13.9' RT. TO 22' RT.	132
TOTALS		132

REF	LOCATION	LN.FT. EACH	LN.FT. EACH
D-1	STA. 122+00, 27.16' RT. TO 123+89, 30' RT.	189	1
D-2	STA. 123+89, 30' RT. TO 123+89, 23' RT.	53	1
D-3	STA. 123+89, 30' RT. TO 124+72, 25' RT.	83	1
D-4	STA. 124+72, 25' RT. TO 125+37, 21' RT.	65	1
D-5	STA. 125+37, 21' RT. TO 125+37, 23' LT.	44	1
D-6	STA. 125+37, 23' LT. TO 126+50, 23' LT.	113	1
D-7	STA. 125+37, 21' RT. TO 126+08, 21' RT.	71	1
D-8	STA. 126+08, 21' RT. TO 126+50, 21' RT.	42	1
TOTALS		660	3

PLAN & PROFILE STA. 122+00 TO STA. 126+50