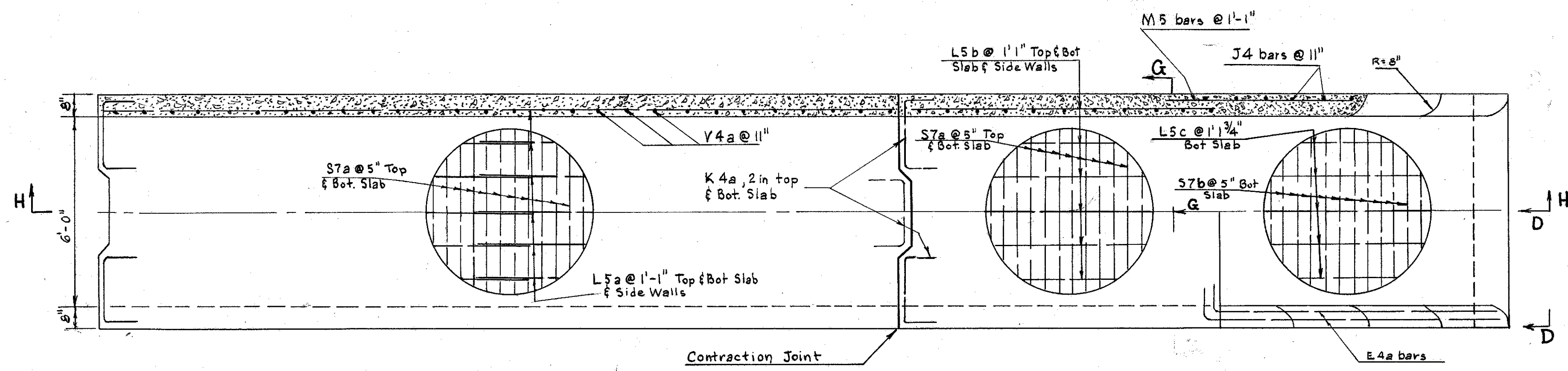
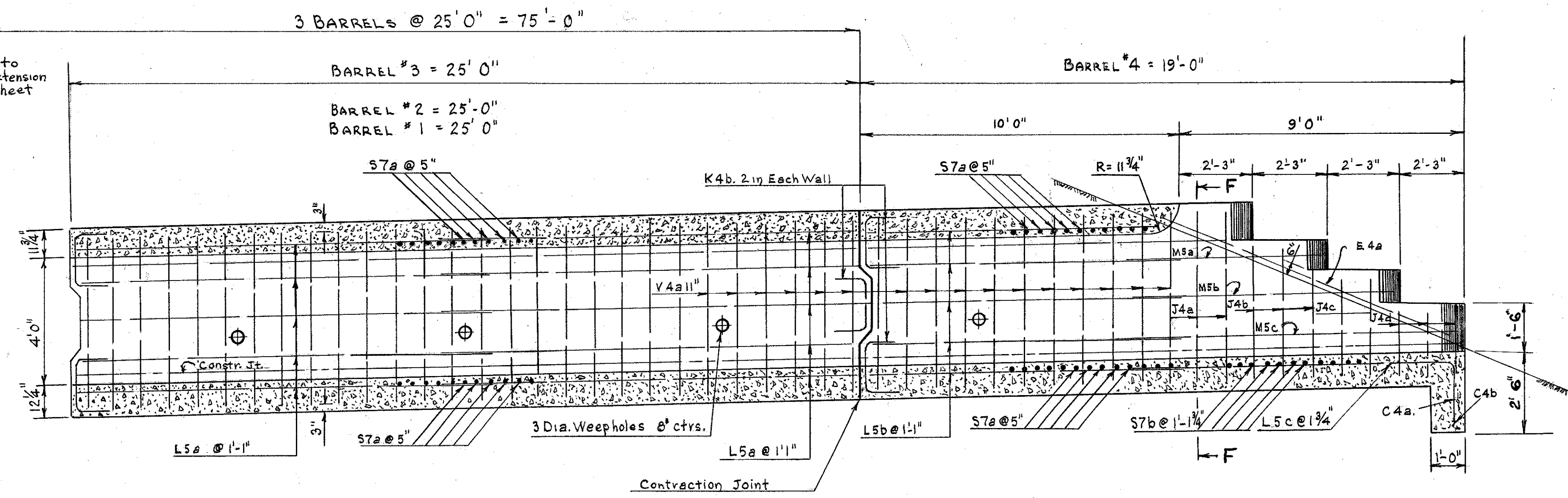


LAK. 283 - (6.61 - 6.94)
LAKE COUNTY
SHEET 2 OF 2

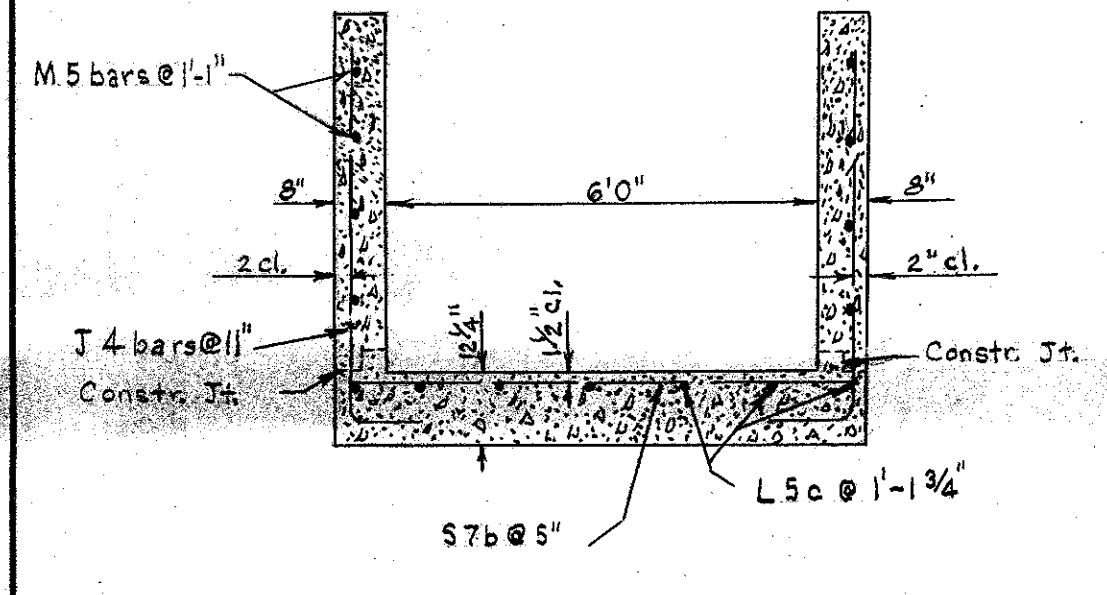


PART PLAN & HORIZONTAL SECTION

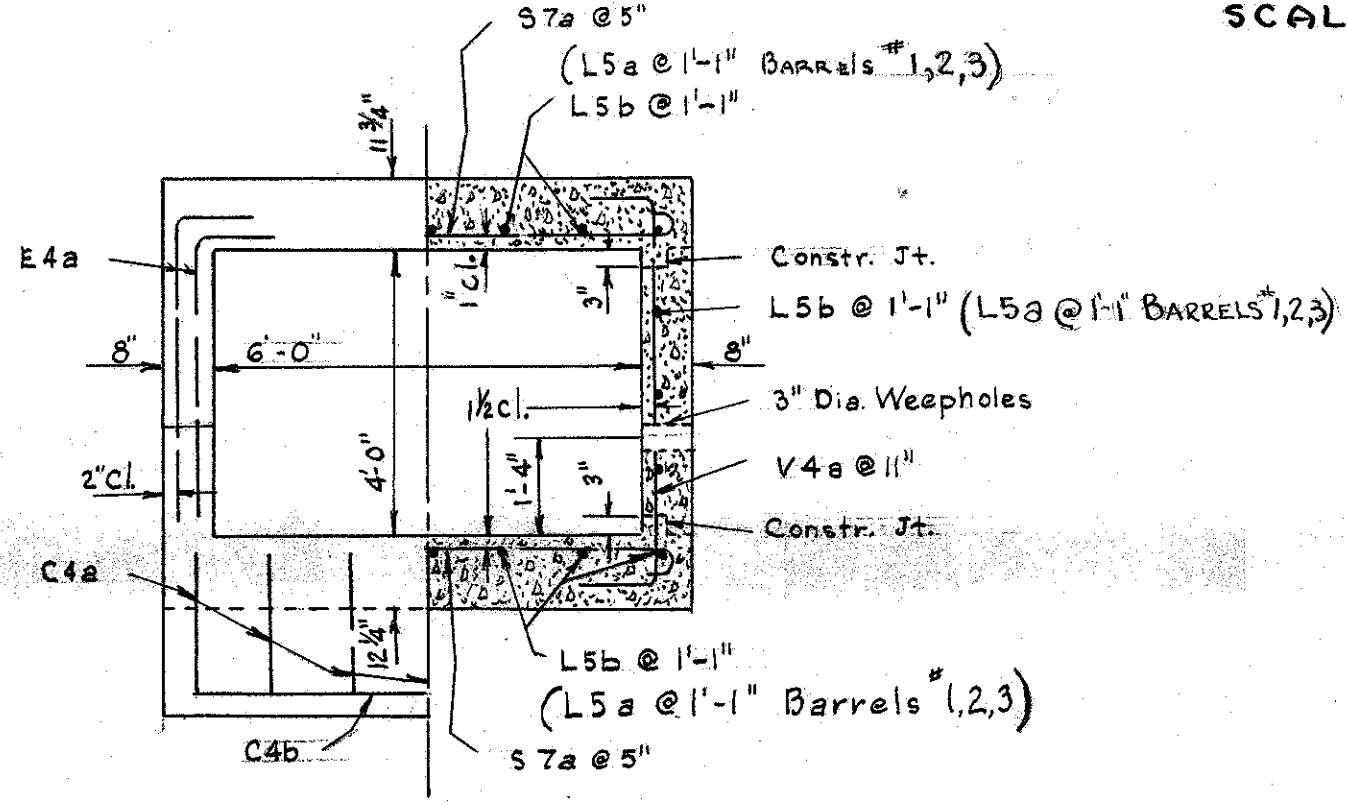
NOTE
Use dowel joint construction to connect BARREL No 1 culvert extension to exist. conc. culvert see sheet No 28 for details.



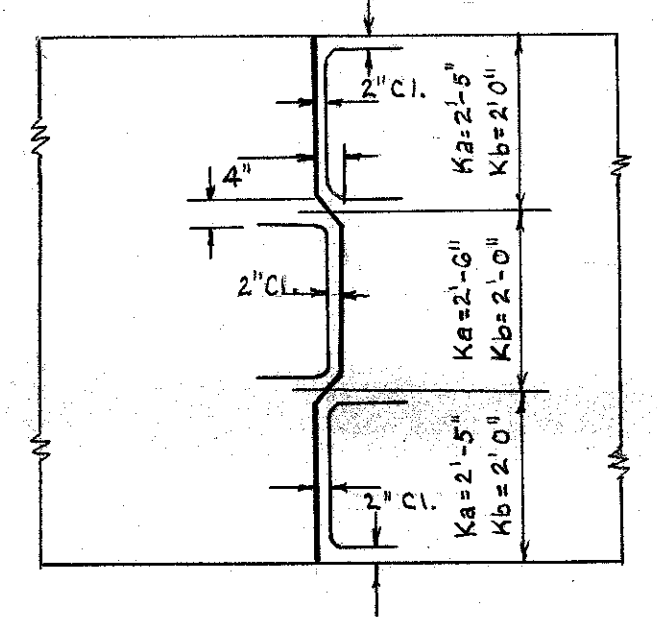
SECTION H-H
SCALE: 3/8" = 1'-0"



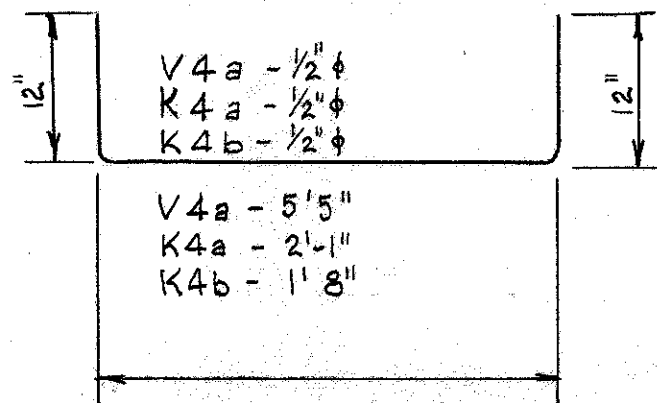
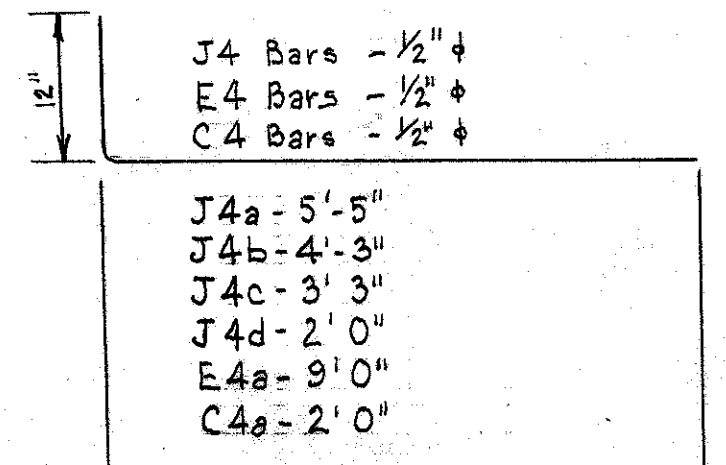
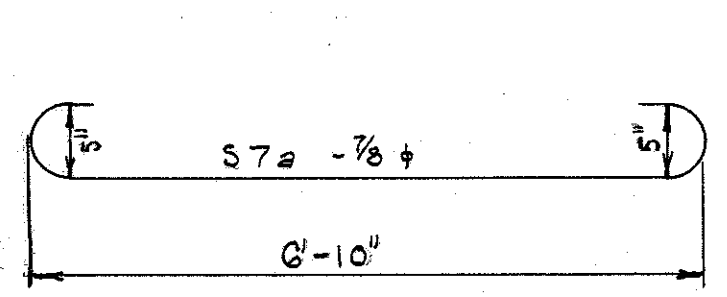
SECTION F-F



VIEW D-D SECTION G-G



DETAIL OF CONTRACTION JOINT



ESTIMATED QUANTITIES			
E2	EXCAVATION FOR STRUCTURE	409	Cu.Yds.
E2	COFFERDAMS, CRIBS & SHEETING	LUMP	SUM
S-1	CONCRETE FOR STRUCTURES CLASS "C"	71	Cu.Yds.
S-4	REINFORCING STEEL	10,916.61	Lbs.
S-22	REMOVE & DISPOSE PORTION OF EXIST. STRUCTURE	LUMP	SUM
S-23	DOWEL HOLES	24	EA.

BARREL No 1						
MARK	SIZE	No	LENGTH	TOTAL FEET	WT. LBS.	SHAPE
S7a	7/8" phi	124	8'-6"	1054.00	2154.38	BENT
L5a	5/8" phi	40	13'-2"	526.67	549.32	STRAIGHT
V4a	1/2" phi	56	7'-7"	424.65	283.67	BENT
DOWELS	3/4" phi	24	2'-0"	48.00	72.10	STRAIGHT
TOTAL					3059.47	
BARREL No 2						
MARK	SIZE	No	LENGTH	TOTAL FEET	WT. LBS.	SHAPE
S7a	7/8" phi	124	8'-6"	1054.00	2154.38	BENT
L5a	5/8" phi	40	13'-2"	526.67	549.32	STRAIGHT
V4a	1/2" phi	56	7'-7"	424.65	283.67	BENT
K4a	1/2" phi	12	4'-3"	51.00	34.07	BENT
K4b	1/2" phi	12	3'-10"	46.00	30.73	BENT
TOTAL					3052.17	
BARREL No 3						
MARK	SIZE	No	LENGTH	TOTAL FEET	WT. LBS.	SHAPE
S7a	7/8" phi	124	8'-6"	1054.00	2154.38	BENT
L5a	5/8" phi	40	13'-2"	526.67	549.32	STRAIGHT
V4a	1/2" phi	56	7'-7"	424.65	283.67	BENT
K4a	1/2" phi	12	4'-3"	51.00	34.07	BENT
K4b	1/2" phi	12	3'-10"	46.00	30.73	BENT
TOTAL					3052.17	
BARREL No 4						
MARK	SIZE	No	LENGTH	TOTAL FEET	WT. LBS.	SHAPE
S7a	7/8" phi	48	8'-6"	408.00	833.95	STRAIGHT
S7b	7/8" phi	22	6'-10"	150.33	307.27	"
L5b	5/8" phi	20	9'-6"	190.00	198.17	"
L5c	"	7	10'-5"	72.92	76.06	"
M5c	"	2	10'-5"	20.83	21.73	"
M5b	"	2	8'-6"	17.00	17.73	STRAIGHT
M5a	5/8" phi	2	6'-3"	12.50	13.04	BENT
V4a	1/2" phi	22	7'-7"	166.83	111.44	"
J4a	"	4	6'-6"	26.00	17.37	"
J4b	"	6	5'-4"	32.00	21.38	"
J4c	"	4	4'-4"	17.33	11.58	"
J4d	"	6	3'-1"	18.50	12.36	"
E4a	"	4	10'-1"	40.33	26.94	"
C4a	"	7	3'-1"	21.58	14.42	BENT
C4b	"	1	6'-10"	6.83	4.56	STRAIGHT
K4a	"	12	4'-3"	51.00	34.07	BENT
K4b	1/2" phi	12	3'-10"	46.00	30.73	BENT
TOTAL					1752.80	
GRAND TOTAL:					10,916.61	Lbs.