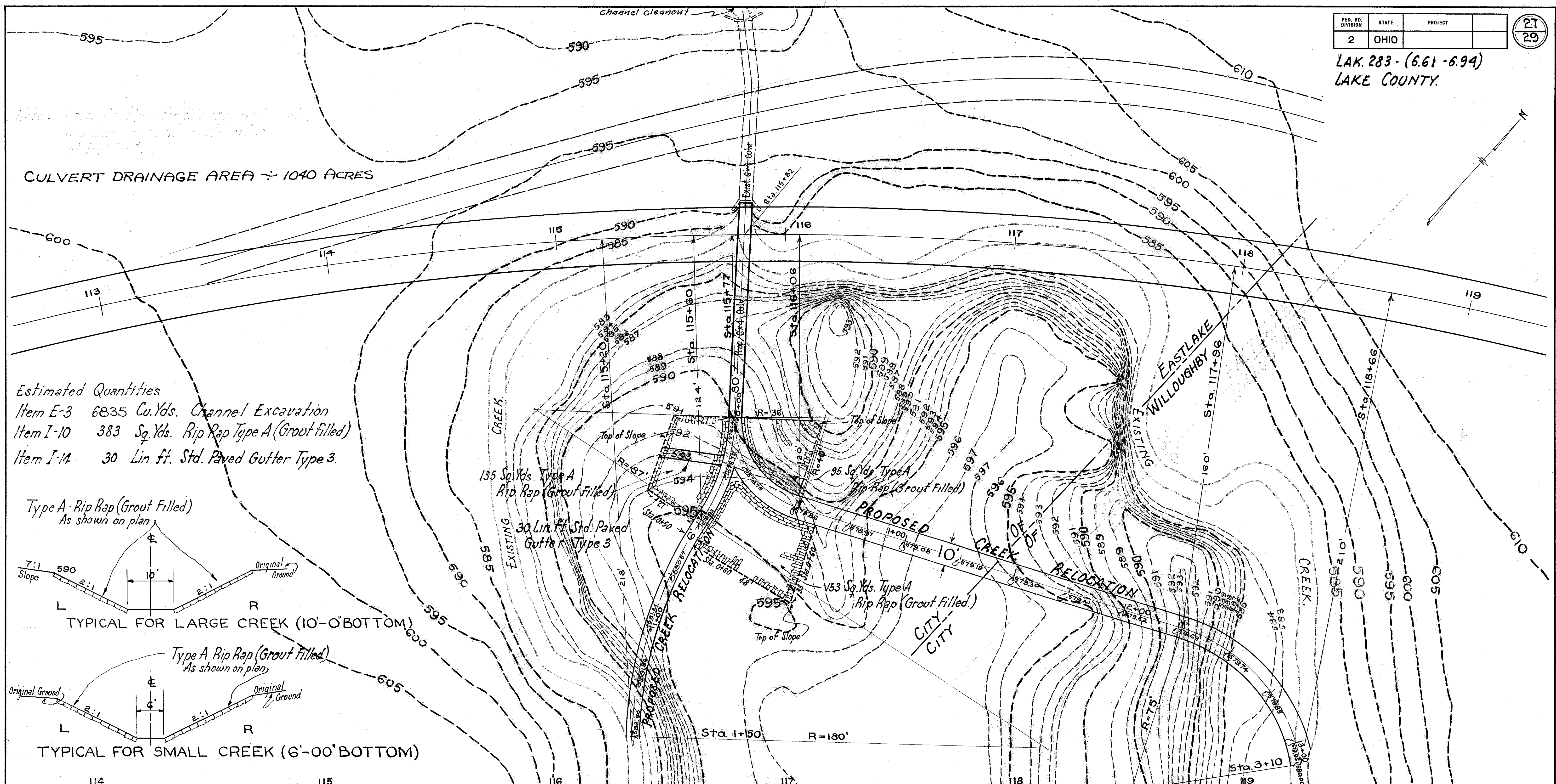
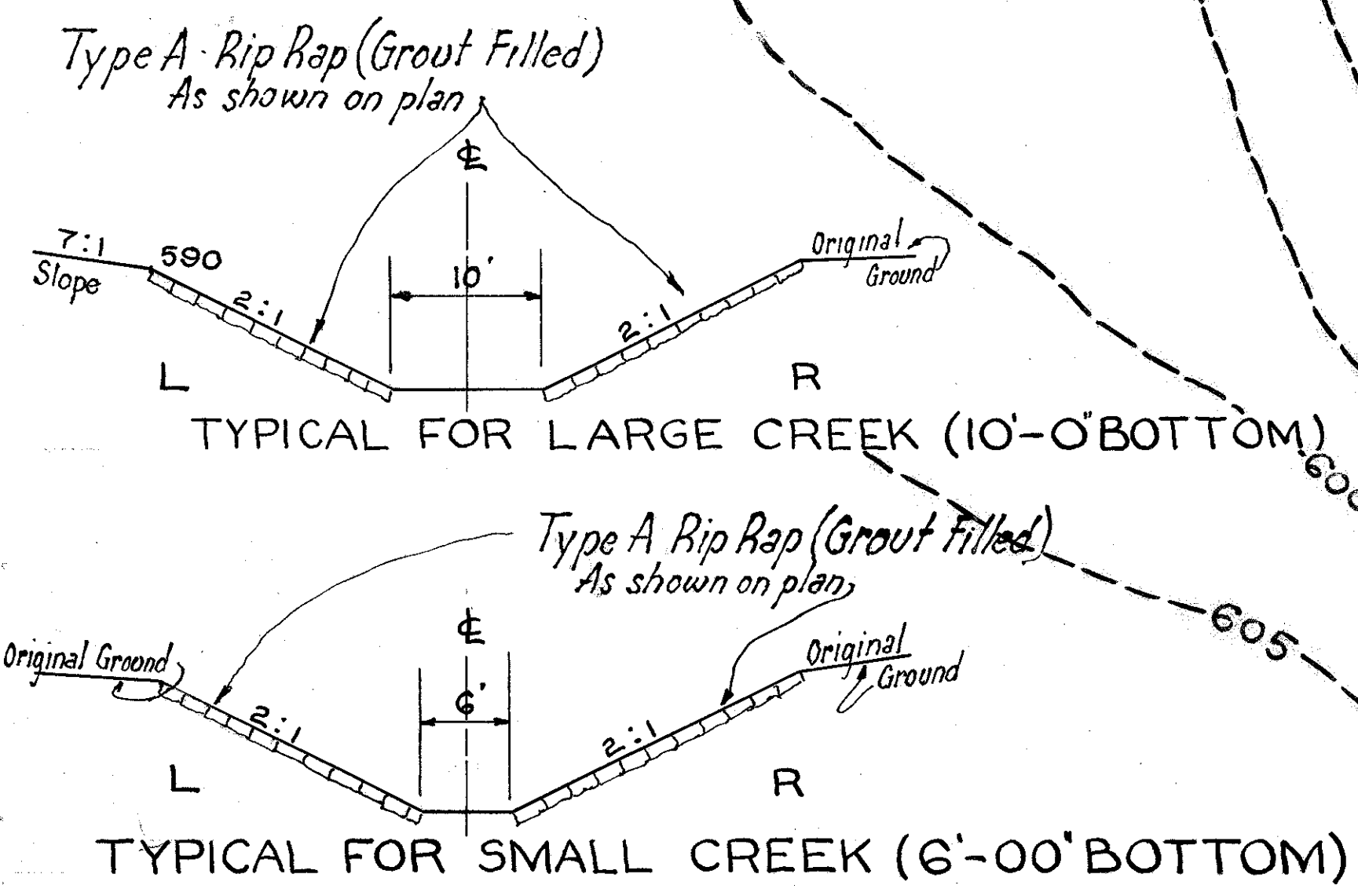


LAK. 283 - (6.61 - 6.94)
LAKE COUNTY.



CULVERT DRAINAGE AREA ~ 1040 ACRES

Estimated Quantities
 Item E-3 6835 Cu.Yds. Channel Excavation
 Item I-10 383 Sq.Yds. Rip Rap Type A (Grout filled)
 Item I-14 30 Lin. ft. Std. Paved Gutter Type 3.



610				610
605				605
600				600
595				595
590				590
585				585
580				580
575				575

	Totals	Willoughby	Eastlake
Excavation	6835 Cu. Yds.	1786 Cu. Yds.	5049 Cu. Yds.
Embankment	3360 Cu. Yds.	2997 Cu. Yds.	363 Cu. Yds.
Embankment +22%	4032 Cu. Yds.	3596 Cu. Yds.	436 Cu. Yds.
Channel cleanout	40 Cu. Yds.		40 Cu. Yds.*

* Channel cleanout at outlet of existing culvert is an estimated quantity. Measurement and payment will be made as per Item E-3 Channel Excavation.

STATE OF OHIO
DEPARTMENT OF HIGHWAYS
BUREAU OF BRIDGES

SITE PLAN
EXTENSION LA-283-7.01
AND
CREEK RELOCATION
CITIES OF EAST LAKE AND
WILLOUGHBY
LAKE COUNTY

SCALE 1" = 20' AUGUST 1957

Present Topography	Proposed Work			
Surveyed	Drawn	Designed	Drawn	Checked
	J.L.	S.P.R.	S.P.R.	C.S.B.