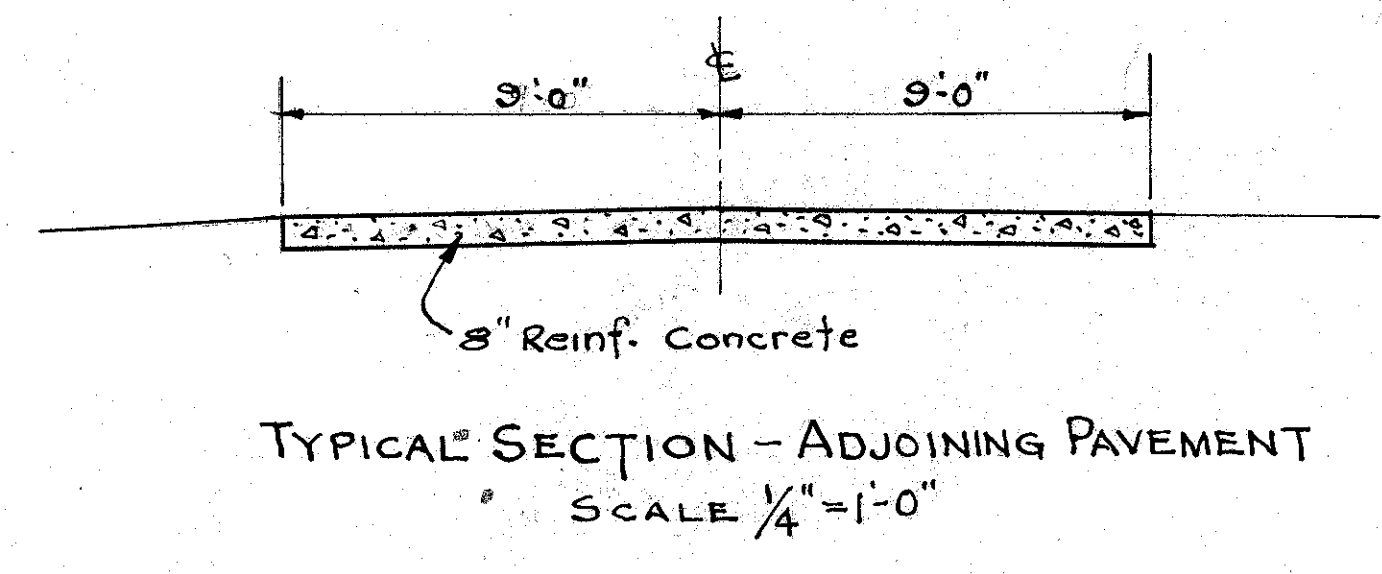
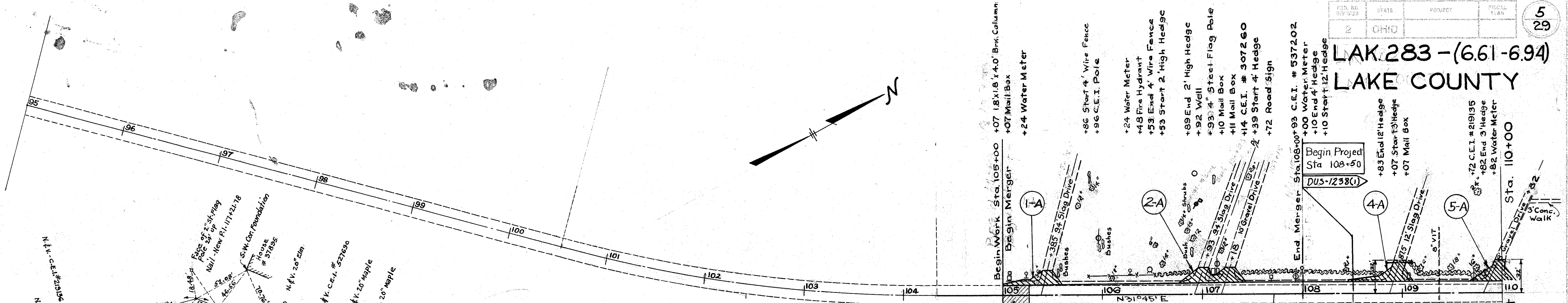


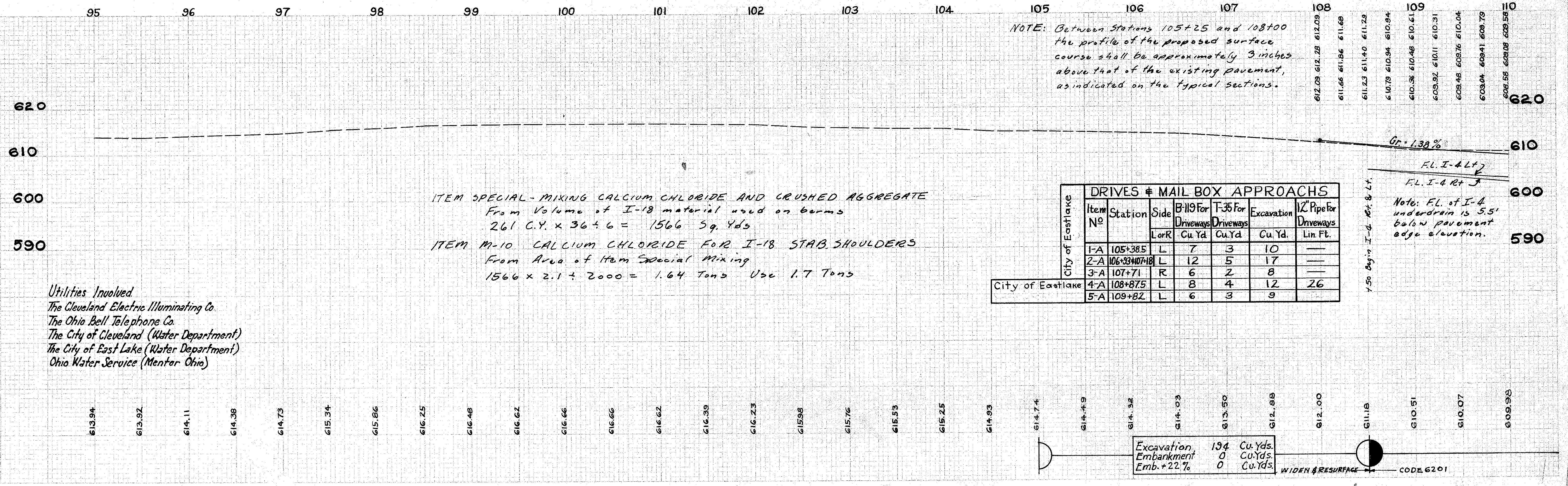
LAK. 283 - (6.61-6.94)  
LAKE COUNTY



MARKER WILL BE FURNISHED AND ERECTED ON THE RIGHT BY THE STATE BEFORE ACCEPTANCE OF THE IMPROVEMENT.

B.M. #1 Nail in N. Side CEI. #219133  
Sta. 104+45-18' Ref. E. Elev. 616.007

NOTE: Between Stations 105+25 and 108+00 the profile of the proposed surface course shall be approximately 3 inches above that of the existing pavement, as indicated on the typical sections.



ITEM SPECIAL - MIXING CALCIUM CHLORIDE AND CRUSHED AGGREGATE  
From Volume of I-18 material used on bums  
 $261 \text{ C.Y.} \times 36 \div 6 = 1566 \text{ Sq. Yds}$

ITEM M-10 CALCIUM CHLORIDE FOR I-18 STAB. SHOULDERS  
From Area of Item Special Mixing  
 $1566 \times 2.1 \div 2000 = 1.64 \text{ Tons Use } 1.7 \text{ Tons}$

City of Eastlake	Item No	Station	Side	B-119 For Driveways		T-35 For Driveways		Excavation Cu. Yd.	12" Pipe For Driveways Lin. Ft.
				L or R	Cu. Yd.	Cu. Yd.	Cu. Yd.		
City of Eastlake	1-A	105+38.5	L	7	3	10			
City of Eastlake	2-A	106+33+107+18	L	12	5	17			
City of Eastlake	3-A	107+71	R	6	2	8			
City of Eastlake	4-A	108+87.5	L	8	4	12	26		
City of Eastlake	5-A	109+82	L	6	3	9			

Utilities Involved  
The Cleveland Electric Illuminating Co.  
The Ohio Bell Telephone Co.  
The City of Cleveland (Water Department)  
The City of East Lake (Water Department)  
Ohio Water Service (Mentor Ohio)

Excavation	134	Cu. Yds.
Embankment	0	Cu. Yds.
Emb. + 22%	0	Cu. Yds.

WIDEN & RESURFACE CODE 6201