

E-I-I

STATE OF OHIO

DUS-1238 (1)

FED. RD. DIVISION	STATE	PROJECT	TYPE FUNDS
2	OHIO	DUS-1238(1)	

1
29

LAK. 283-(6.61-6.94)
LAKE COUNTY

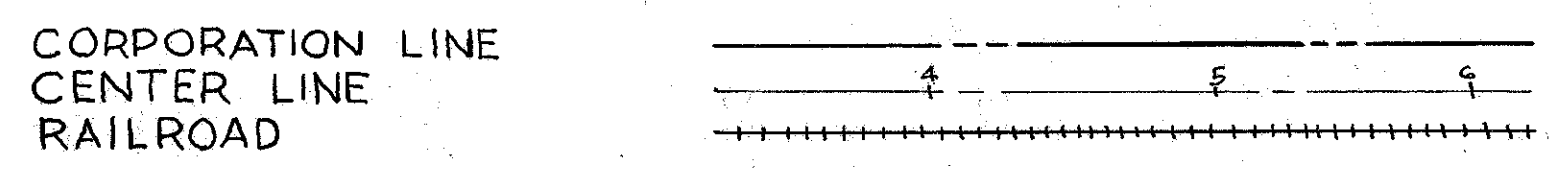
DEPARTMENT OF HIGHWAYS

LAK - 283(6.61-6.94)

CITIES OF EASTLAKE & WILLOUGHBY LAKE COUNTY

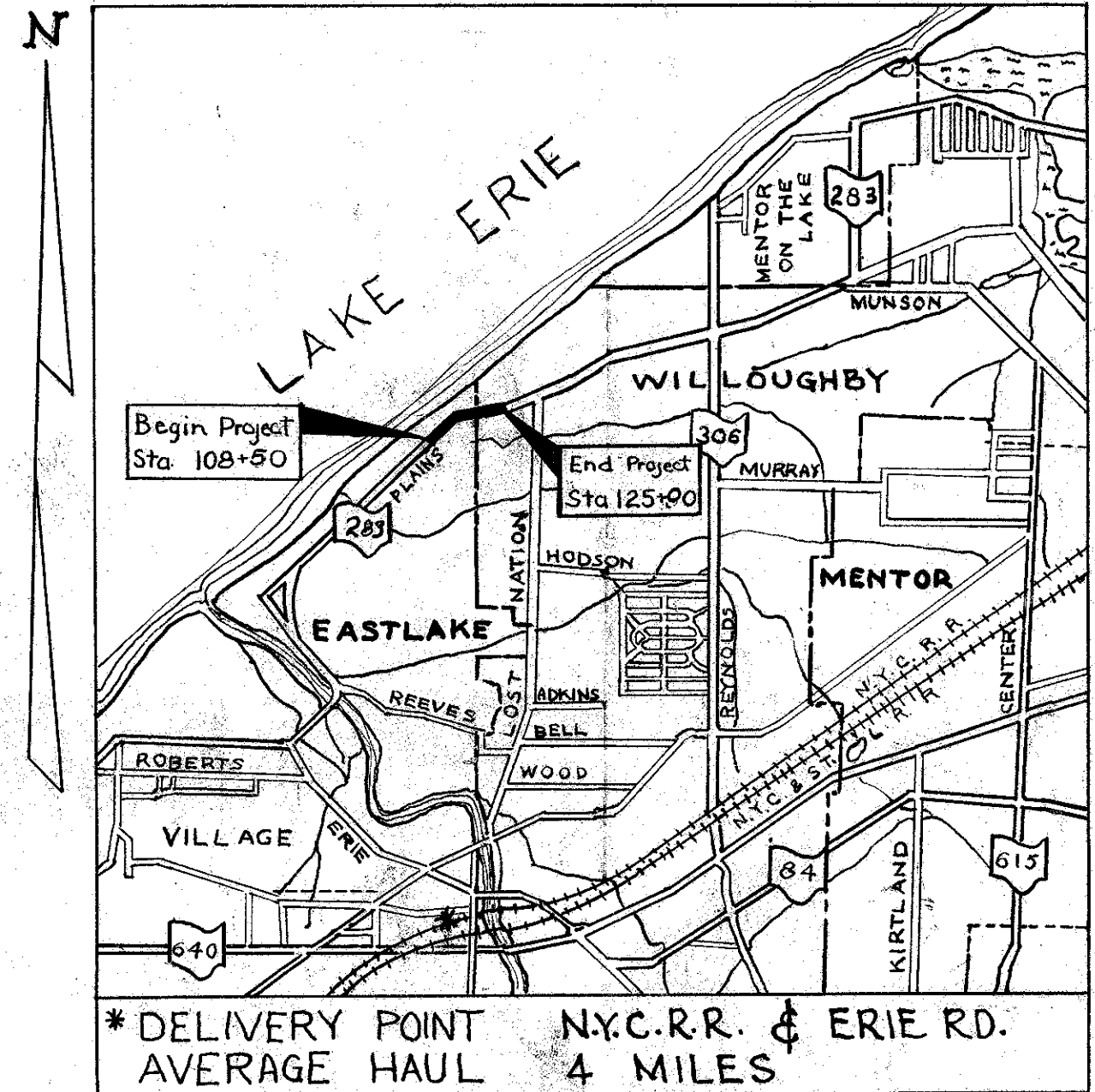
APR 2 1962
GROUND PHOTOGRAPH

CONVENTIONAL SIGNS



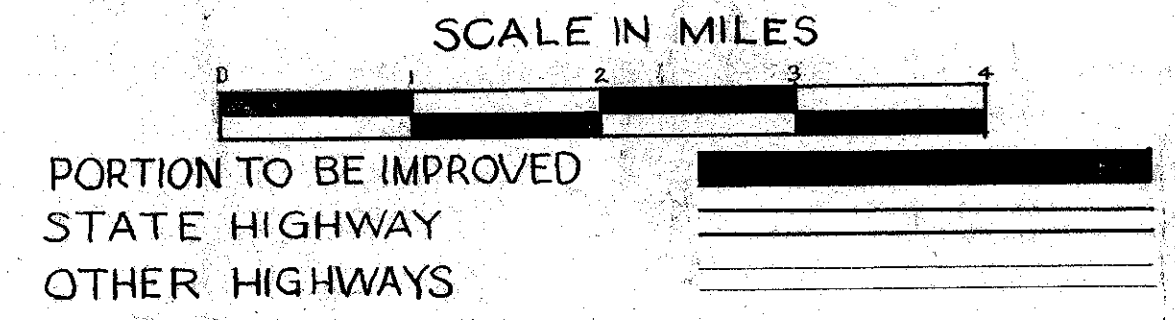
INDEX OF SHEETS

TITLE SHEET	1
TYPICAL SECTION & GENERAL NOTES	2
PAVEMENT CALCULATIONS	3
GENERAL SUMMARY & PAVEMENT CALCULATIONS	4
PLAN & PROFILE	5-7
RIGHT OF WAY	8-9
CROSS SECTIONS	10-26
DRAINAGE STRUCTURES	27-29



* DELIVERY POINT NYC.R.R. & ERIE RD.
AVERAGE HAUL 4 MILES

LOCATION PLAN



SCALES

PLAN 1" = 50'
PROFILE HOR. 1" = 50'
PROFILE VER. 1" = 5"

LINE DATA

LENGTH OF WORK		LENGTH OF PROJECT	
CITY OF EASTLAKE		CITY OF EASTLAKE	
Begin Work Sta. 105+00		Begin Project Sta. 108+50	
Corporation Line Sta. 118+10.03		Corporation Line Sta. 118+10.03	
Length of Work = 1310.03 Lin. Ft. = 0.248 Miles.		Length of Project = 960.03 Lin. Ft. = 0.181 Miles.	
CITY OF WILLOUGHBY		CITY OF WILLOUGHBY	
Corporation Line Sta. 118+10.03		Corporation Line Sta. 118+10.03	
End Work Sta. 128+50		End Project Sta. 125+00	
Length of Work = 1039.97 Lin. Ft. = 0.196 Miles.		Length of Project = 689.97 Lin. Ft. = 0.130 Miles.	
TOTAL NET LENGTH OF WORK = 2350.00 Lin. Ft. = 0.445 Mi.		TOTAL NET LENGTH OF PROJECT = 1650.00 Lin. Ft. = 0.312 Mi.	

STANDARD DRAWINGS			
DR-1	1/3/55	SBC-45(2)MS	9/18/47
RI-1	1/3/55	I-15.No.1	8/1/55
G-7.07	6/1/56	L-3-A	4/1/50
T-35	1/2/56		
L-1	4/1/50		
I-1234&5	4/24/58		
I-8CB22A	8/1/56		
I-14 G	1/22/52		
I-15 No. 1-A	6/1/57		
L-3	4/1/50		

SUPPLEMENTAL SPECIFICATIONS			
E-101	1/1/57		
B-119 Rev.	8/11/57		

APR 2 1962
GROUND PHOTOGRAPH

The Standard Specifications of the State of Ohio Department of Highways including changes and Supplemental Specifications listed in the proposal shall govern this improvement.

I hereby approve these plans and declare that the making of this improvement will not require the closing to traffic of the Highway and that provisions for the maintenance and safety of traffic will be as set forth on the plans and estimates.

The right of way for this improvement will be provided by the State of Ohio.

Approved Arthur A. Enver
Date 10-4-57 Division Deputy Director

Approved G. H. Mankless
Date 6-13-58 Deputy Director of Planning & Programming

Approved _____
Date _____ Engineer of Bridges

Approved R. E. Shultz
Date 6-9-58 Engineer of Location & Design

Approved R. E. Masketter
Date 6-9-58 Deputy Director of Design & Construction

Approved _____
Date _____ First Assistant Director

Approved George J. Thompson
Date 4/13/58 Acting Director of Highways

000047

DEPARTMENT OF COMMERCE
BUREAU OF PUBLIC ROADS

APPROVED: _____

DIVISION ENGINEER _____ DATE _____

File No. LAKE COUNTY LAK-283(6.61-6.94)

DATE OF LETTING _____

CONTRACT NO. _____