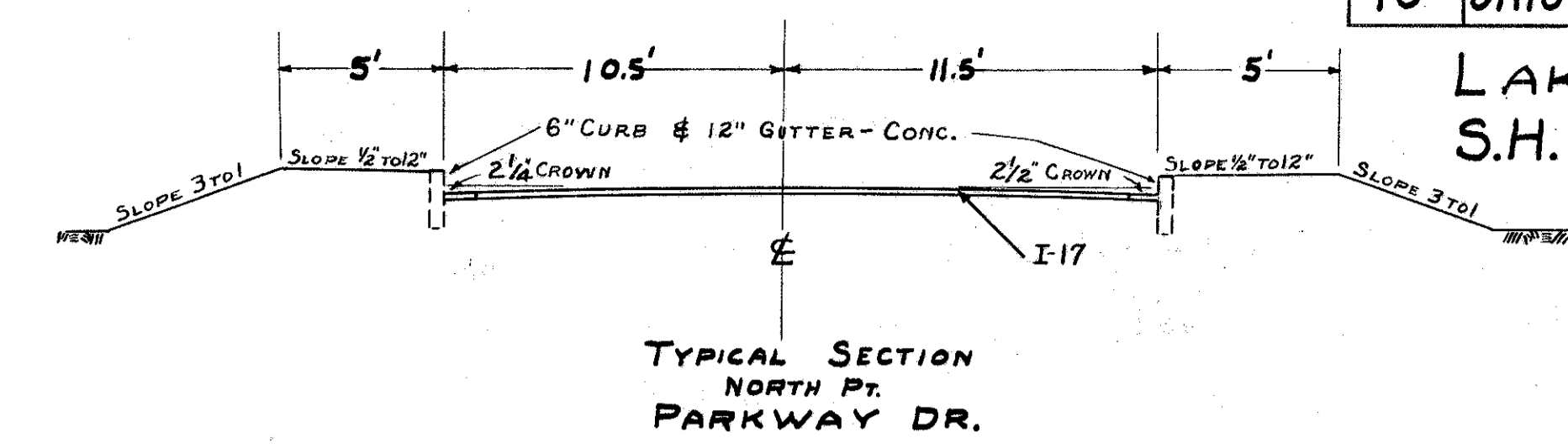
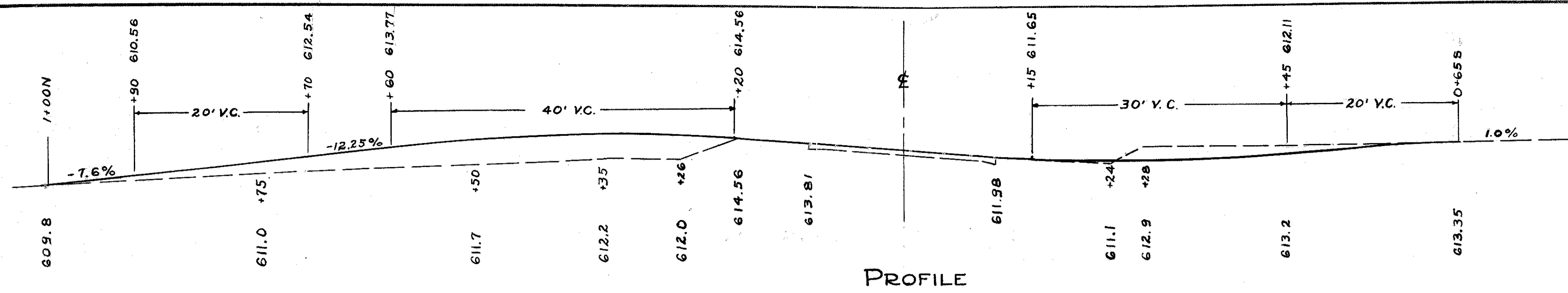
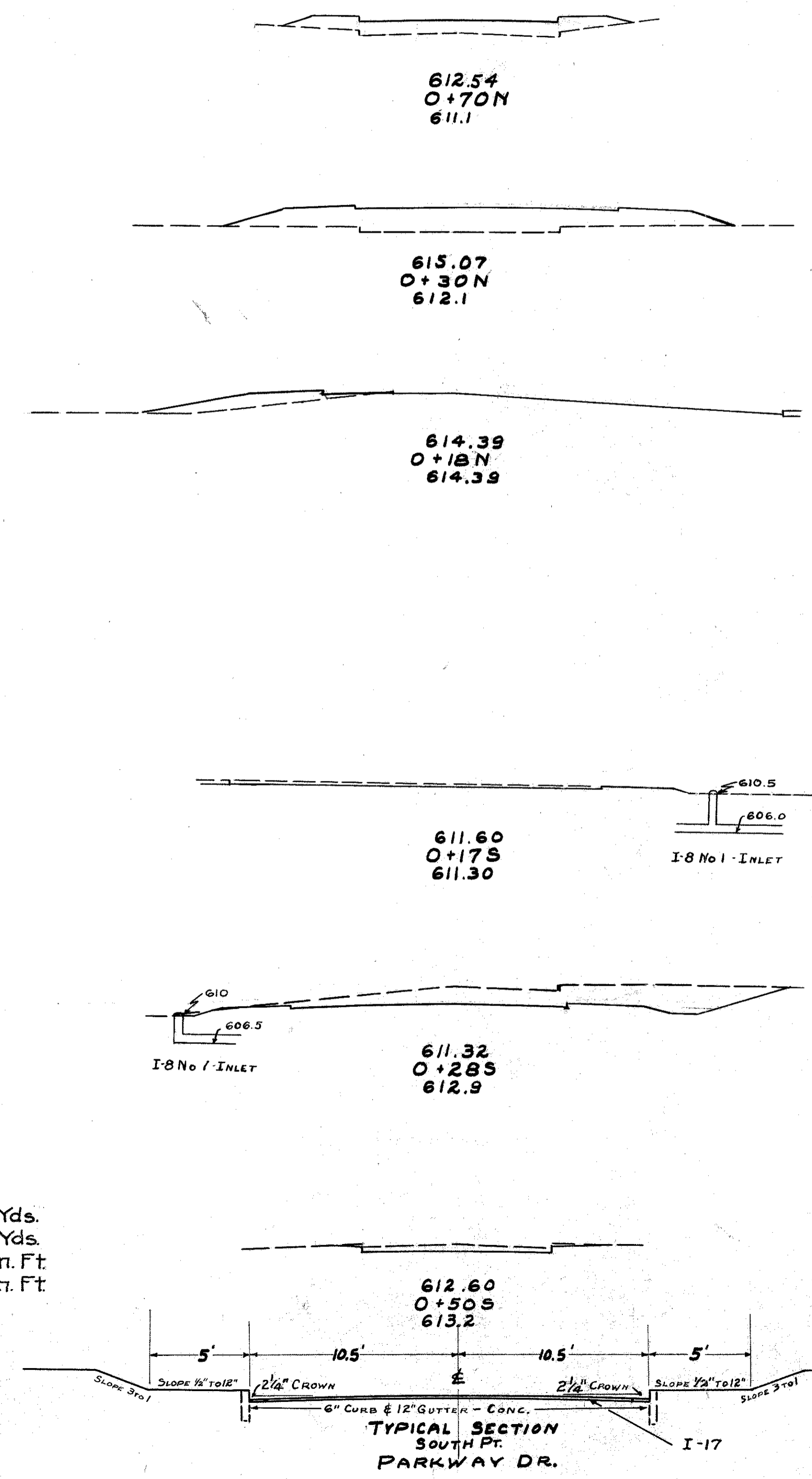
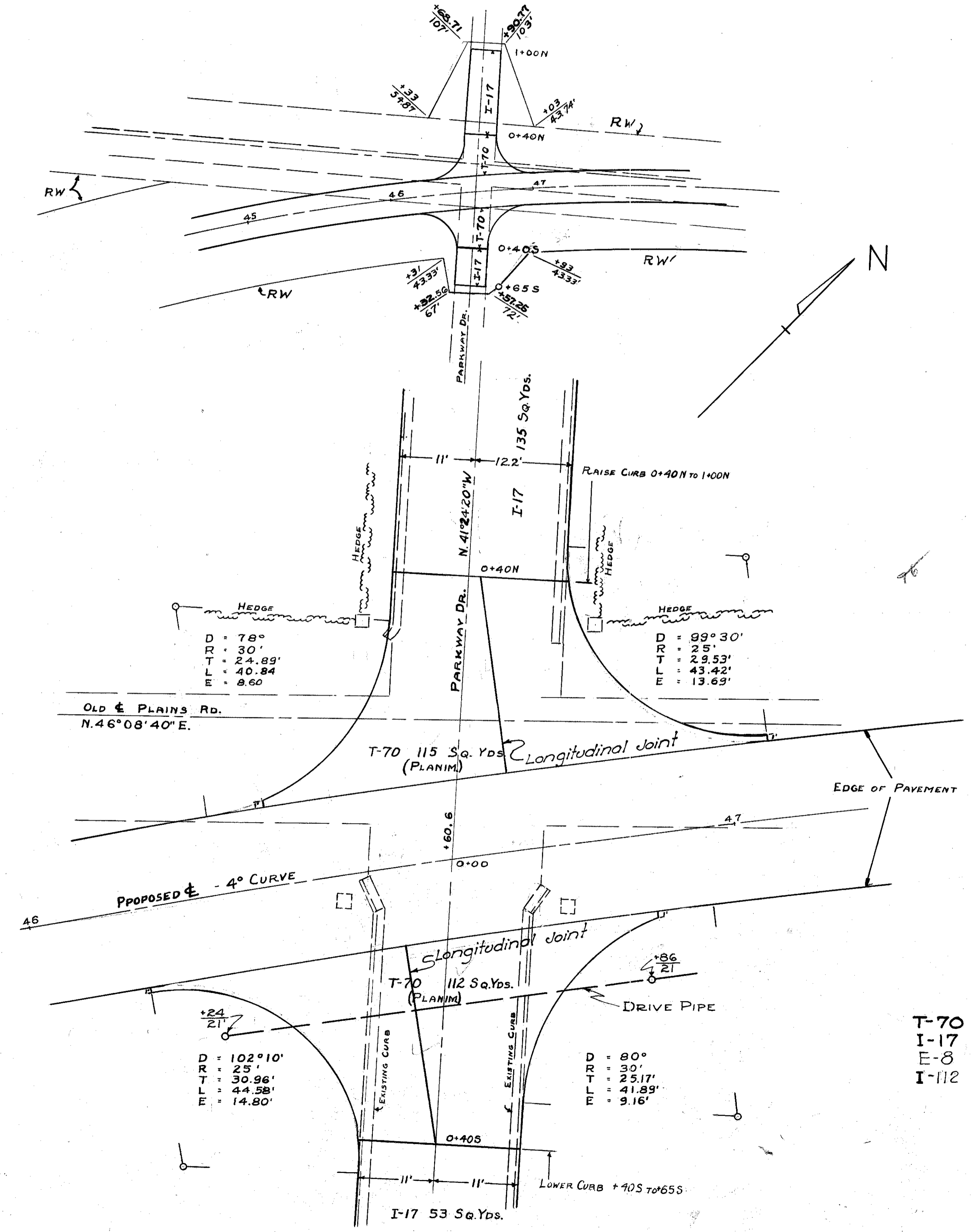


LAKE COUNTY  
S.H. 520 SEC. C (PT)



INTERSECTION DETAILS  
PARKWAY RD.  
STA 46+60.6  
SCALE 1"=10"

Sheet  
8-D  
24



END STA	AREA		Cu. Yds.	
	CUT	FILL	Exc	EMB
1+00N	0	0	0	33
	0	60	0	137
	0	125	6	34
0+11N	25	30	9	4
	35	0	0	0
0+11S	20	0	6	0
	108	0	26	0
	19	0	52	0
0+65S	0	0	5	0
TOTAL	104	208		

- ESTIMATED QUANTITIES**
- T-70 6" PORTLAND CEMENT CONC. PAV'T. 227 Sq.Yds.
  - I-17 4" TRAFFIC BOUND AGGREGATE 20.8 Cu.Yds.
  - E-8 REMOVAL OF COMB. CONC. CURB & GUTTER 262 Lin. Ft.
  - I-112 RESET OLD COMB. CONC. CURB & GUTTER 170 Lin. Ft.