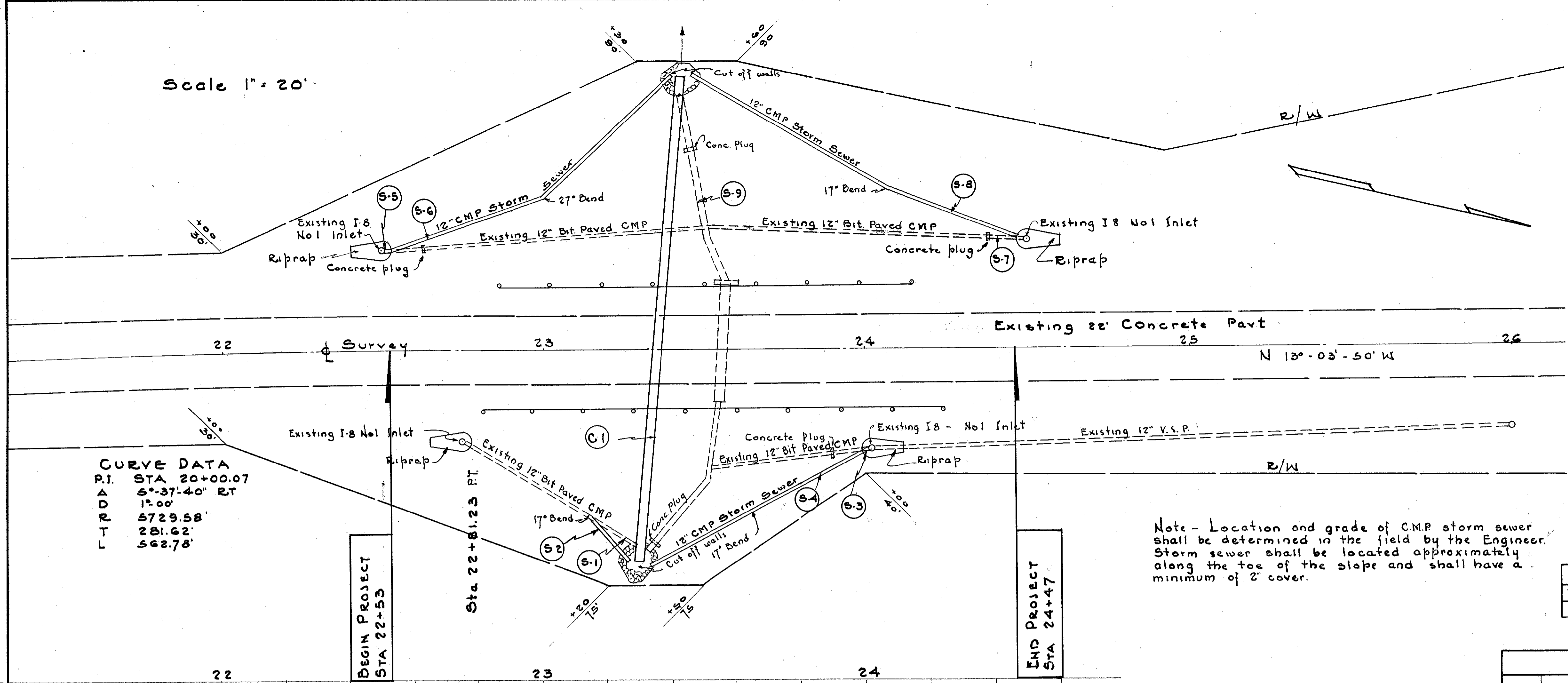


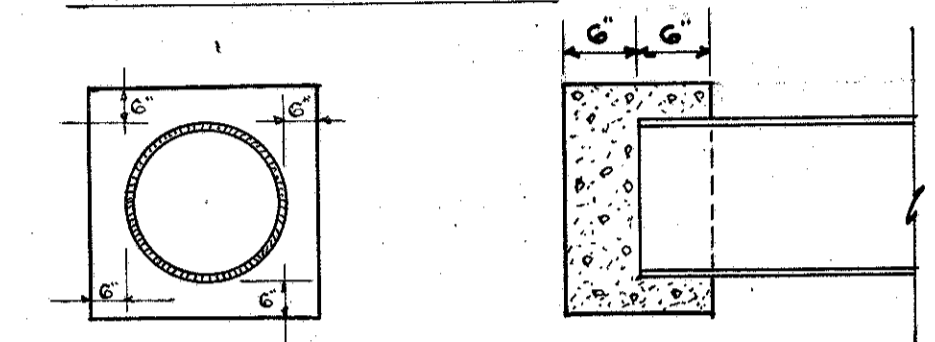
**LAKE-COUNTY  
LAK - 283 -5.10**

Scale 1" = 20'



**CURVE DATA**  
 P.I. STA 20+00.07  
 A.D.R.T. 5°-37'-40" RT  
 L 15.00'  
 T 5729.58'  
 E 281.62'  
 L 562.78'

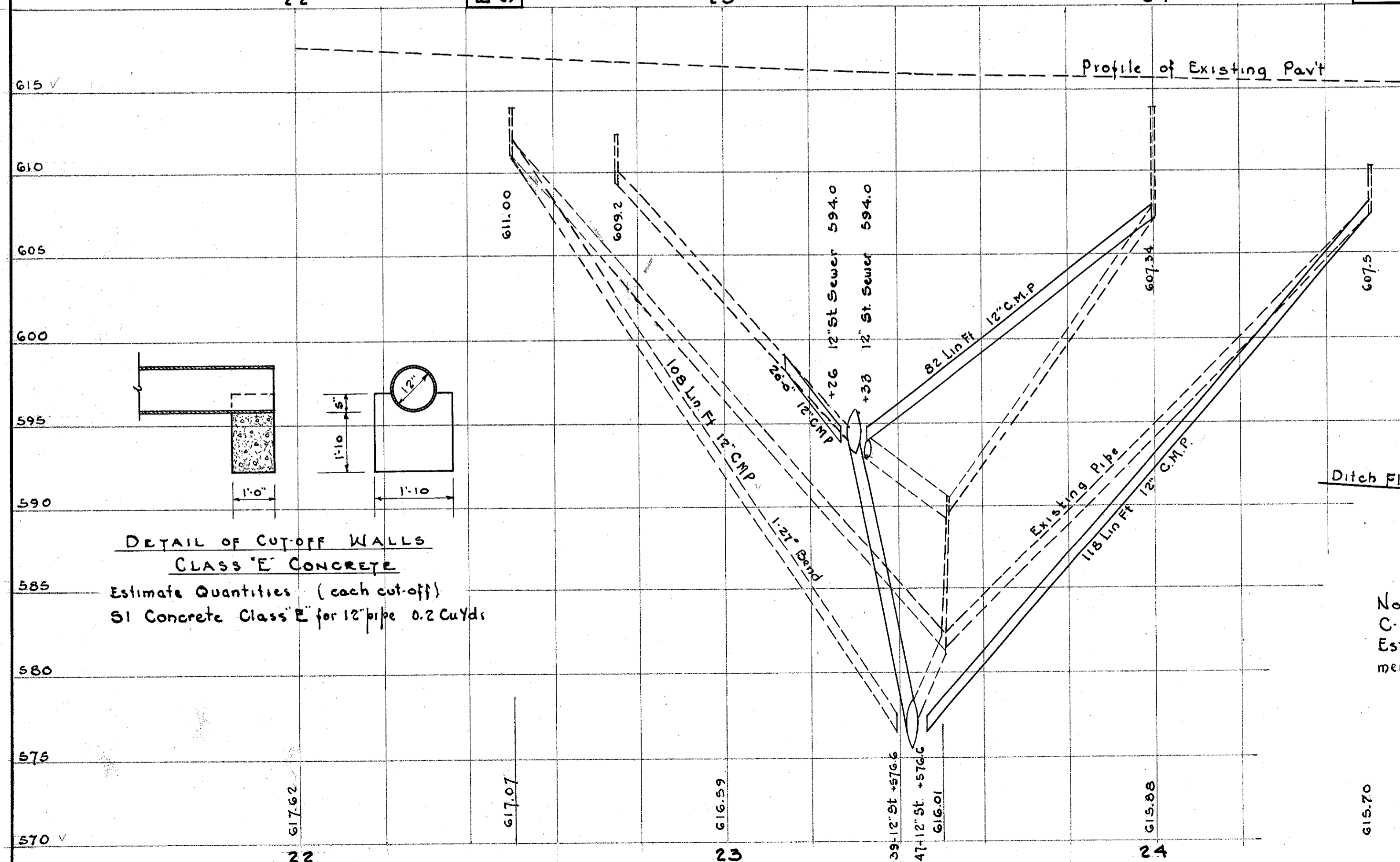
**DETAIL OF CONCRETE PLUG**  
Class E Concrete



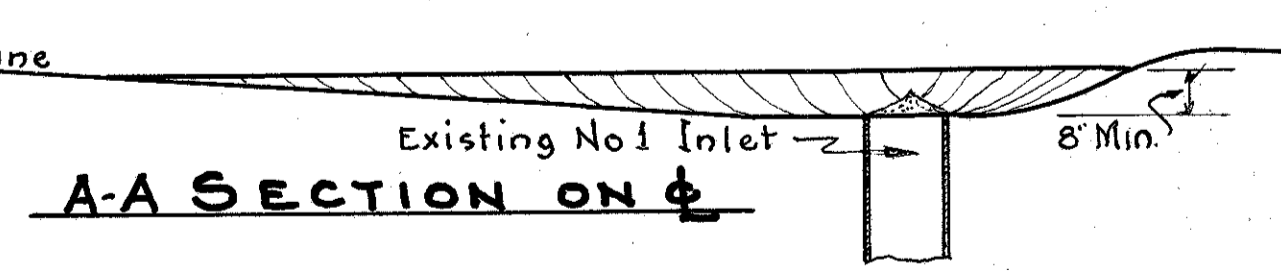
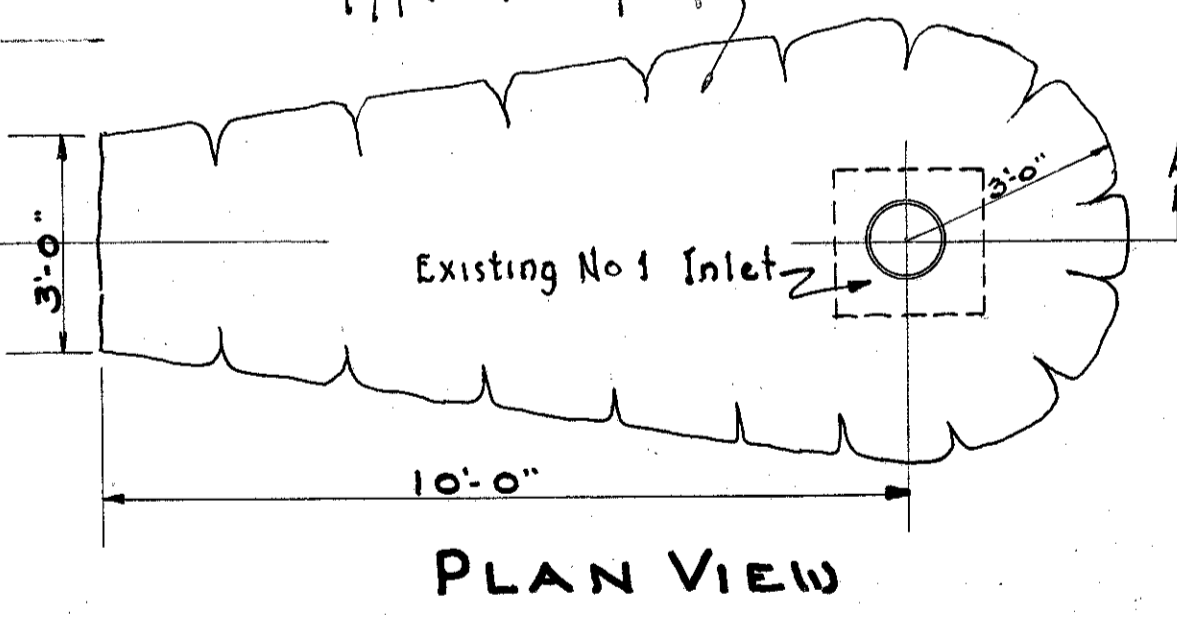
**Estimated Quantities (Ea Plug)**  
 S1 Concrete Class E for 12" Pipe 0.1 Cu Yd  
 S1 Concrete Class E for 18" Pipe .15 Cu Yd

Note - Location and grade of C.M.P. storm sewer shall be determined in the field by the Engineer. Storm sewer shall be located approximately along the toe of the slope and shall have a minimum of 2' cover.

STRUCTURE UNDER 20' SPAN			
Mark	Station	Description	Sheet No
C-1	23+35	Structural Steel Plate Lining	3



**Detail of Riprap at Inlets**  
Type A Riprap



Note - Contractor shall place surplus excavation from C-1 around No. 1 Inlets as directed by the Engineer. Estimated 4 Cu Yds embankment per Inlet. Cost of embankment included in unit price bid for E-2 Excavation.

STORM SEWERS											
Mark	Side	Station		Riprap Type A 12" Thick Sq Yd	12" Pipe Rem'd Stored Lin Ft	12" Pipe Rem'd Reused Lin Ft	Relay's 12" Pipe Lin Ft	12CMP Sewer Lin Ft	12 CMP Bend		Concrete for Structure Cu Yd
		From	To						17°	27°	
S1	Rt	23+13	23+31			20					
S2	Rt	23+13	23+26	6			20			1	.2
S3	Rt	23+39	23+99		10				82	1	.2
S4	Rt	23+39	23+99	10							
S5	Lt	22+53	22+63		10						.1
S6	Lt	22+53	23+39	6				108		1	.2
S7	Lt	24+37	24+47		10						.1
S8	Lt	23+47	24+47	6				118		1	.2
S9	Lt & Rt	23+35									.3
Total				24	30	20	20	308	3	1	*1.4

\* Carried to structure Summary

**DETAIL OF CUTOFF WALLS**  
CLASS E CONCRETE

Estimate Quantities (each cut-off)  
 S1 Concrete Class E for 12" pipe 0.2 Cu Yds