

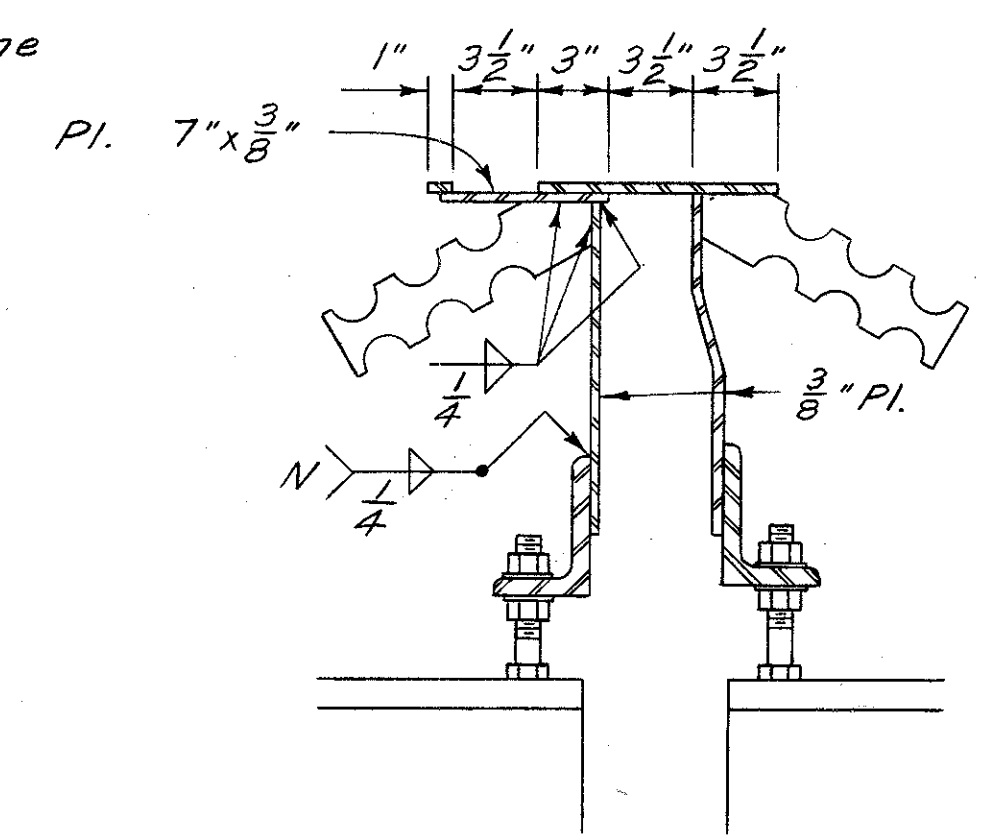
RADIAL TRANSVERSE SECTION

SLAB THICKNESS shown includes 1" for monolithic wearing surface.

DECK SLAB DEPTH: The distance shown from top of deck slab to top of steel beam is the dimension used to determine the quantity of deck concrete to be paid for. The actual dimension may vary because the top flange of the beam may not be parallel to the finished grade.

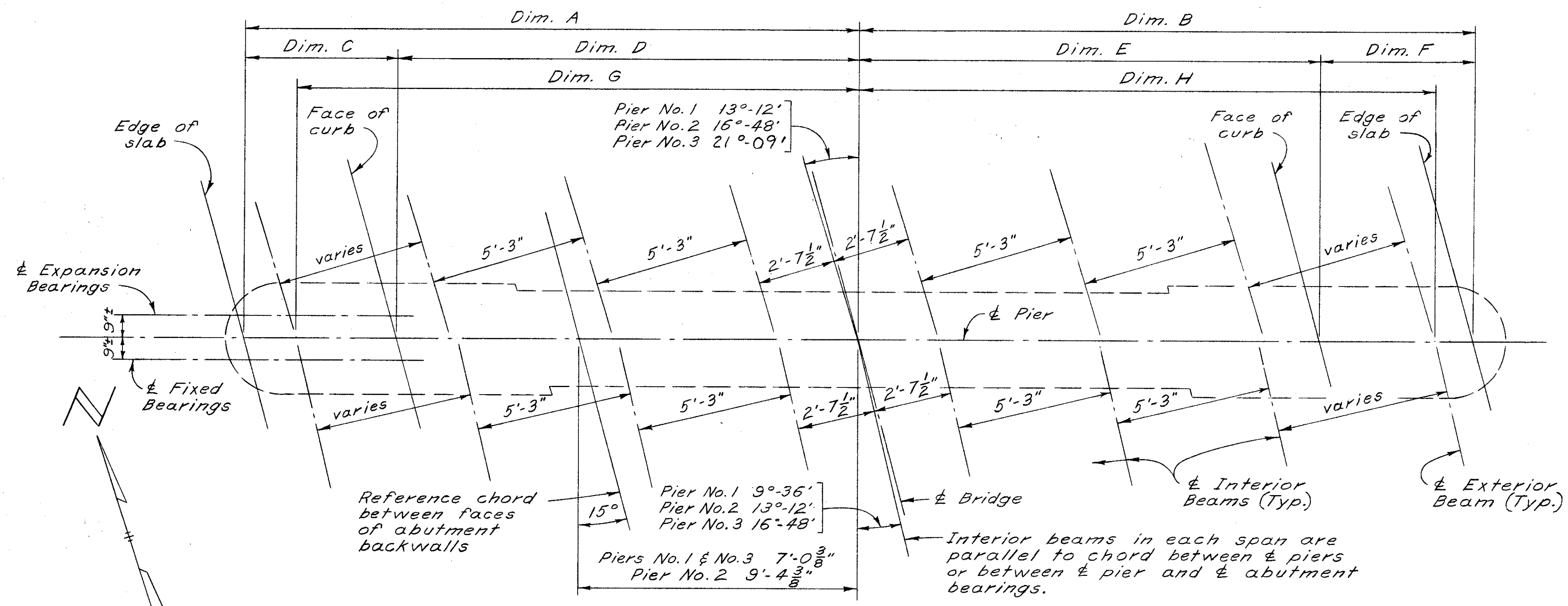
Each line of longitudinal bars, unless otherwise shown, shall consist of 2-S501 bars and 1-S502 bar in each of the first three spans, and 3-S501 & 1-S502 in span 4. Lap 1'-7" Min.

S503, S504, S505 & S508 bars shall be spaced 1'-6" ± c/c. S506 & S507 bars shall be spaced 1'-2" c/c max., adjusted to clear parapet joints. For placement of main transverse reinforcing bars, see sheet 7/9

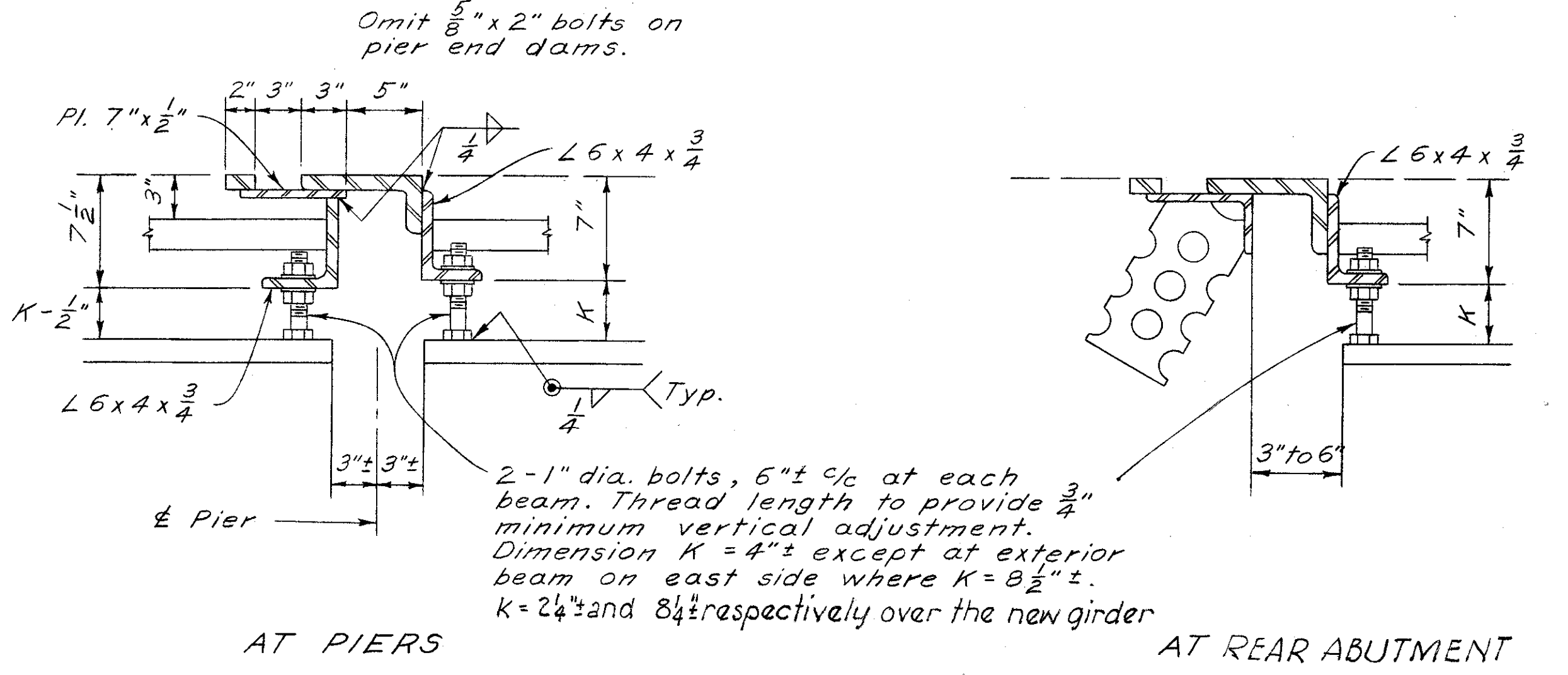


SIDEWALK END DAM AT PIERS

For additional details and for details of sidewalk end dam at abutments see Standard Drawing SD-1-69



PLAN AT PIERS



AT PIERS

END DAM DETAILS

AT REAR ABUTMENT

For additional details see Standard Drawing SD-1-69

| Dimensions | A | B | C | D | E | F | G | H |
|------------|------------|------------|-----------|-------------|------------|-----------|---------|---------|
| Pier No. 1 | 20'-4 3/8" | 20'-4 3/4" | 5'-1 1/4" | 15'-3 5/8" | 15'-3 5/8" | 5'-1 1/8" | 18'-8" | 19'-2" |
| Pier No. 2 | 20'-8 5/8" | 20'-8 1/4" | 5'-2 5/8" | 15'-6 1/2" | 15'-6 1/4" | 5'-2" | 18'-11" | 19'-5" |
| Pier No. 3 | 21'-1 1/2" | 21'-1" | 5'-3 3/8" | 15'-10 1/8" | 15'-9 3/4" | 5'-3 1/4" | 19'-4" | 19'-11" |

SUPERSTRUCTURE DETAILS
BRIDGE NO. LAK-283-0472
OVER CHAGRIN RIVER