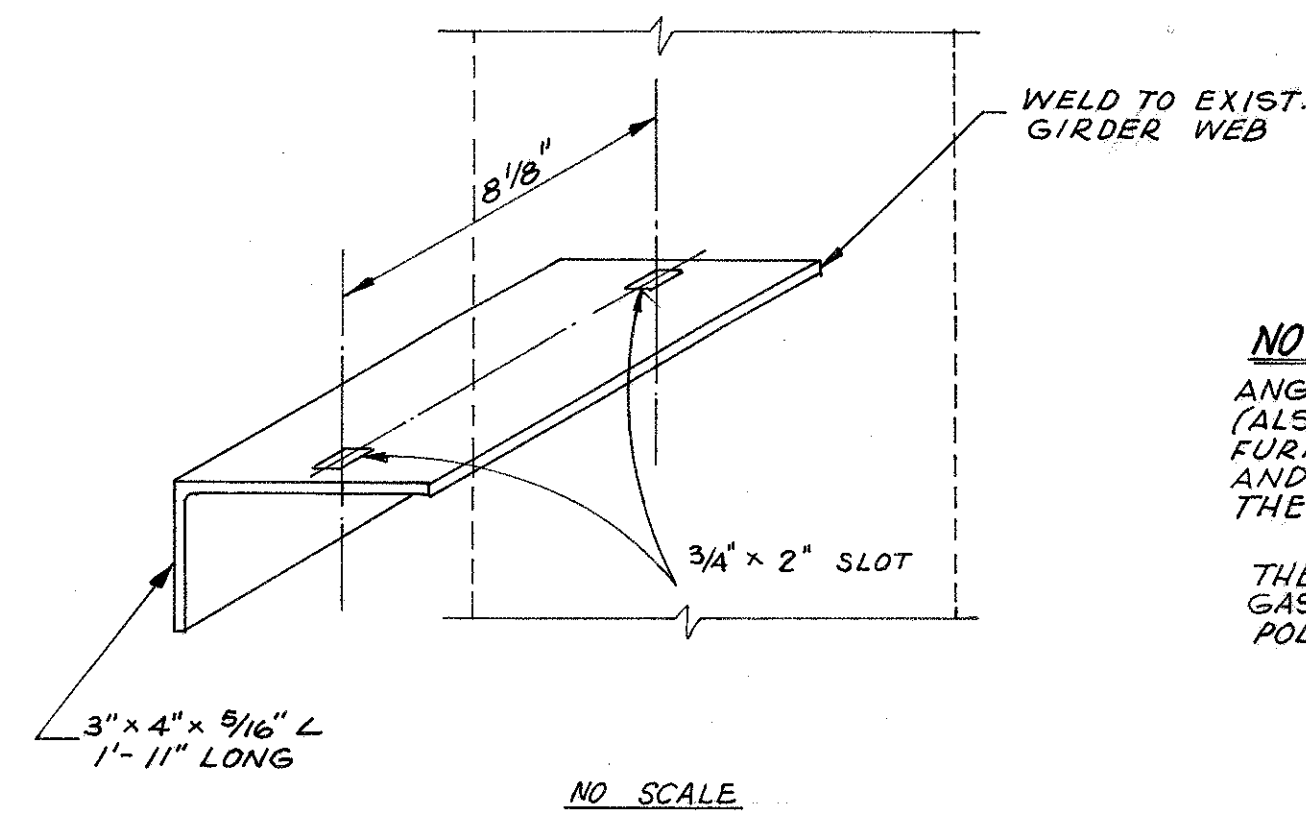
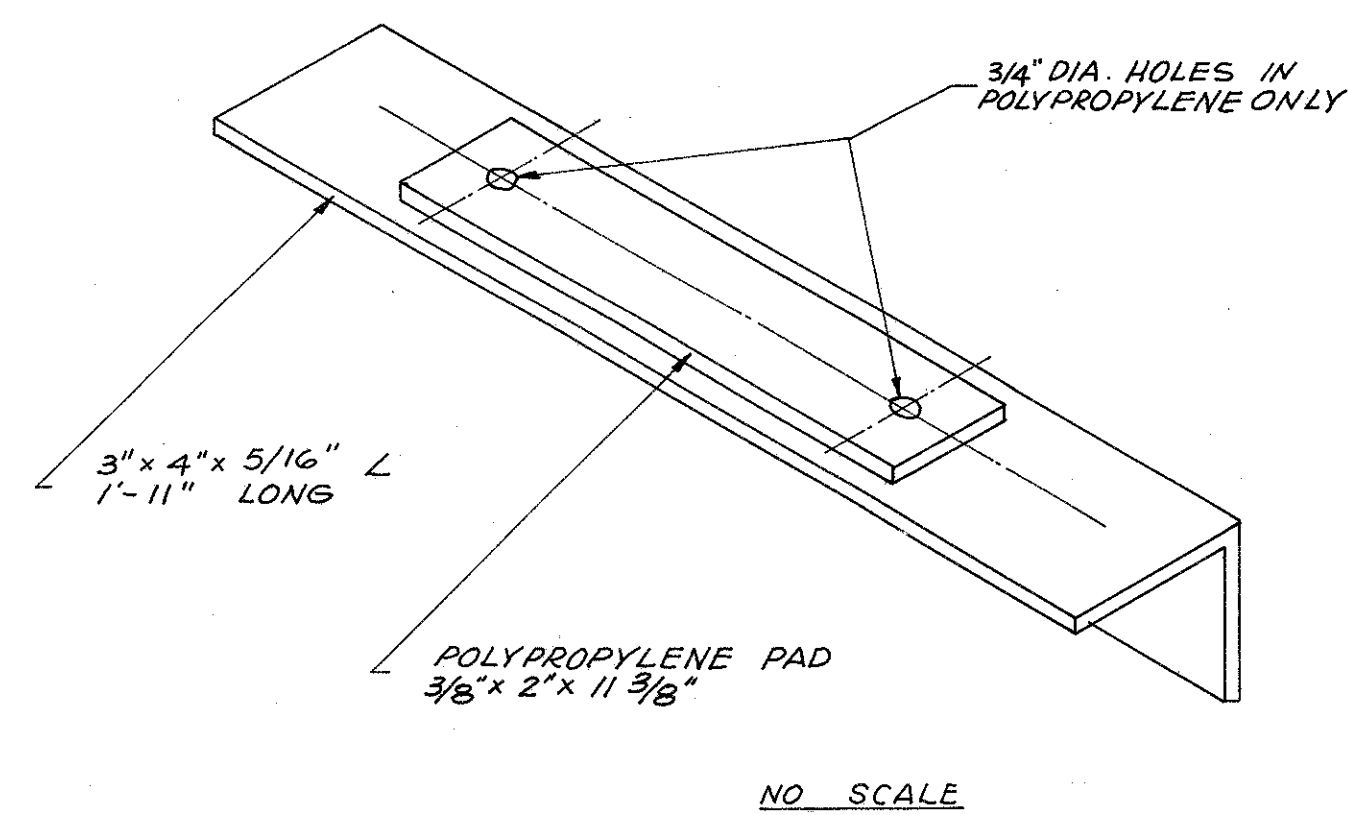
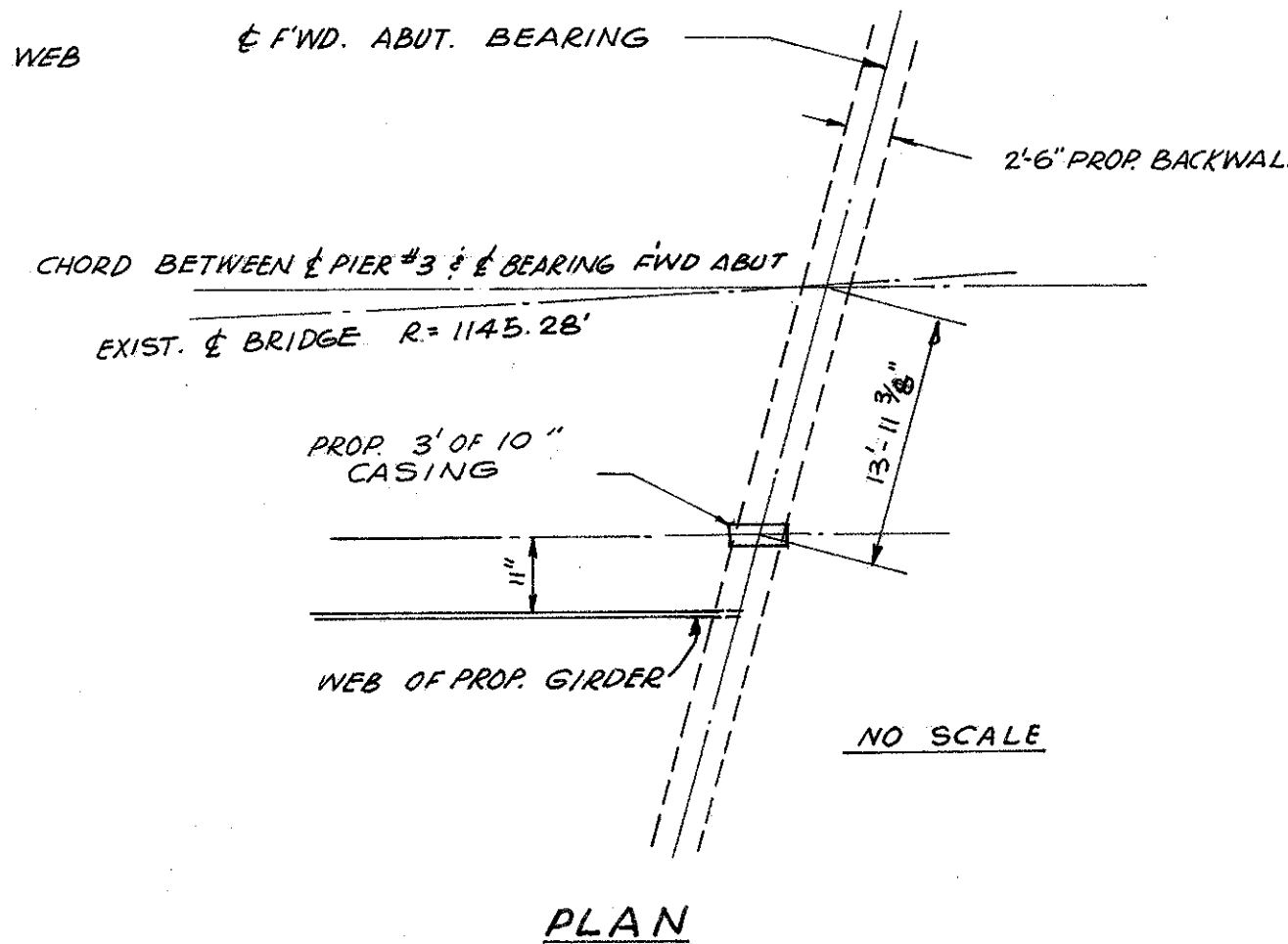
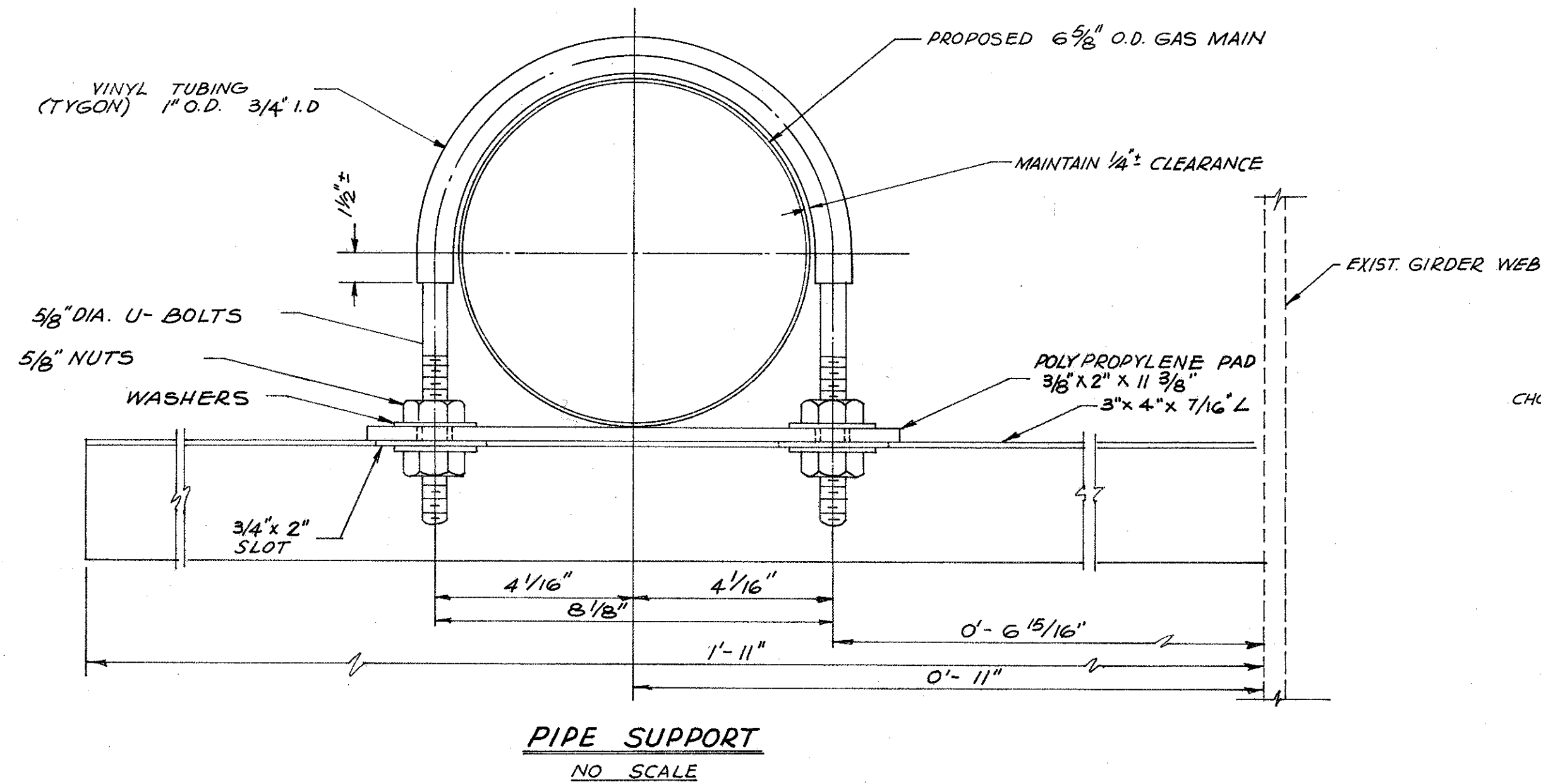


GAS LINE DETAILS

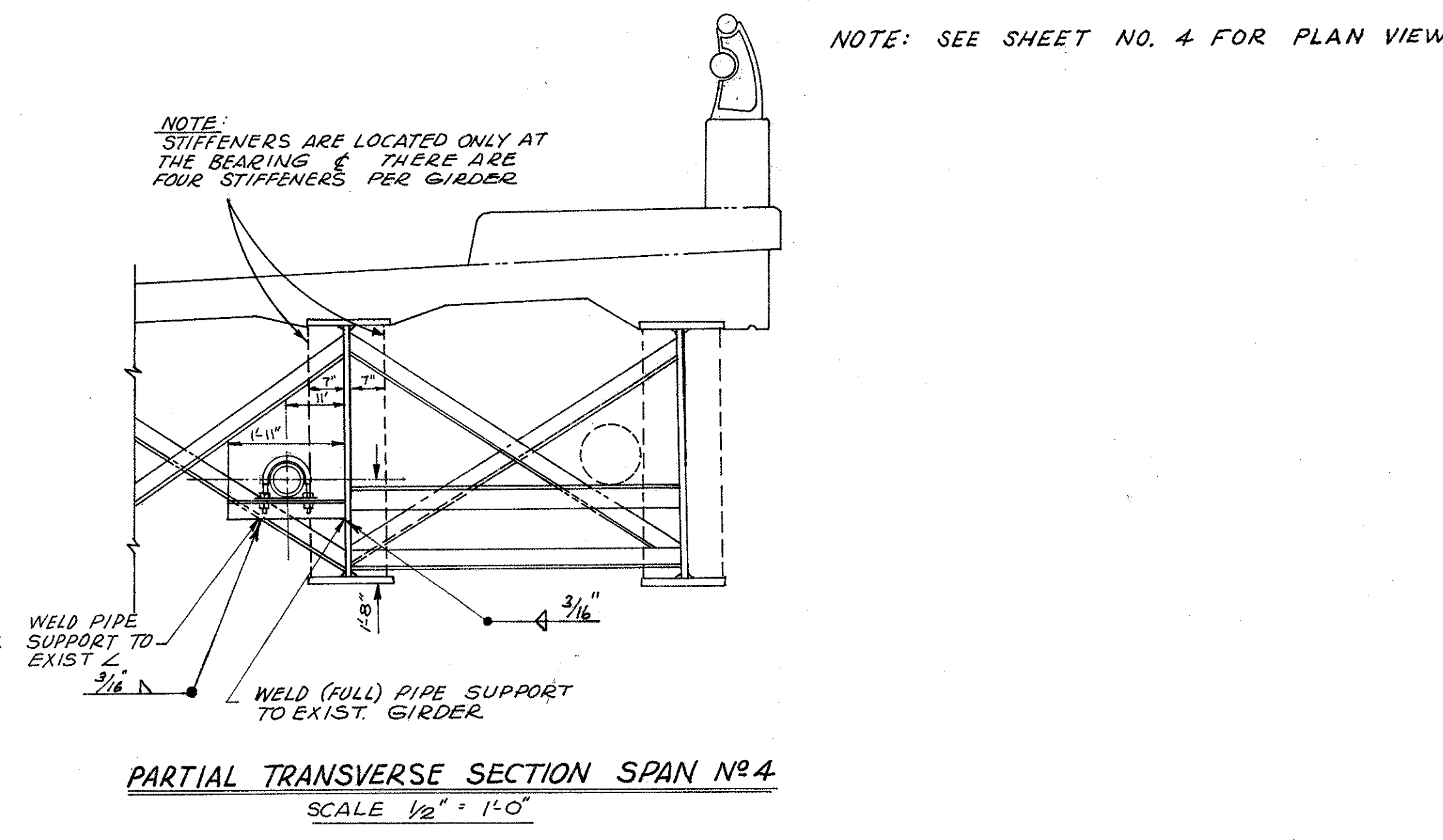
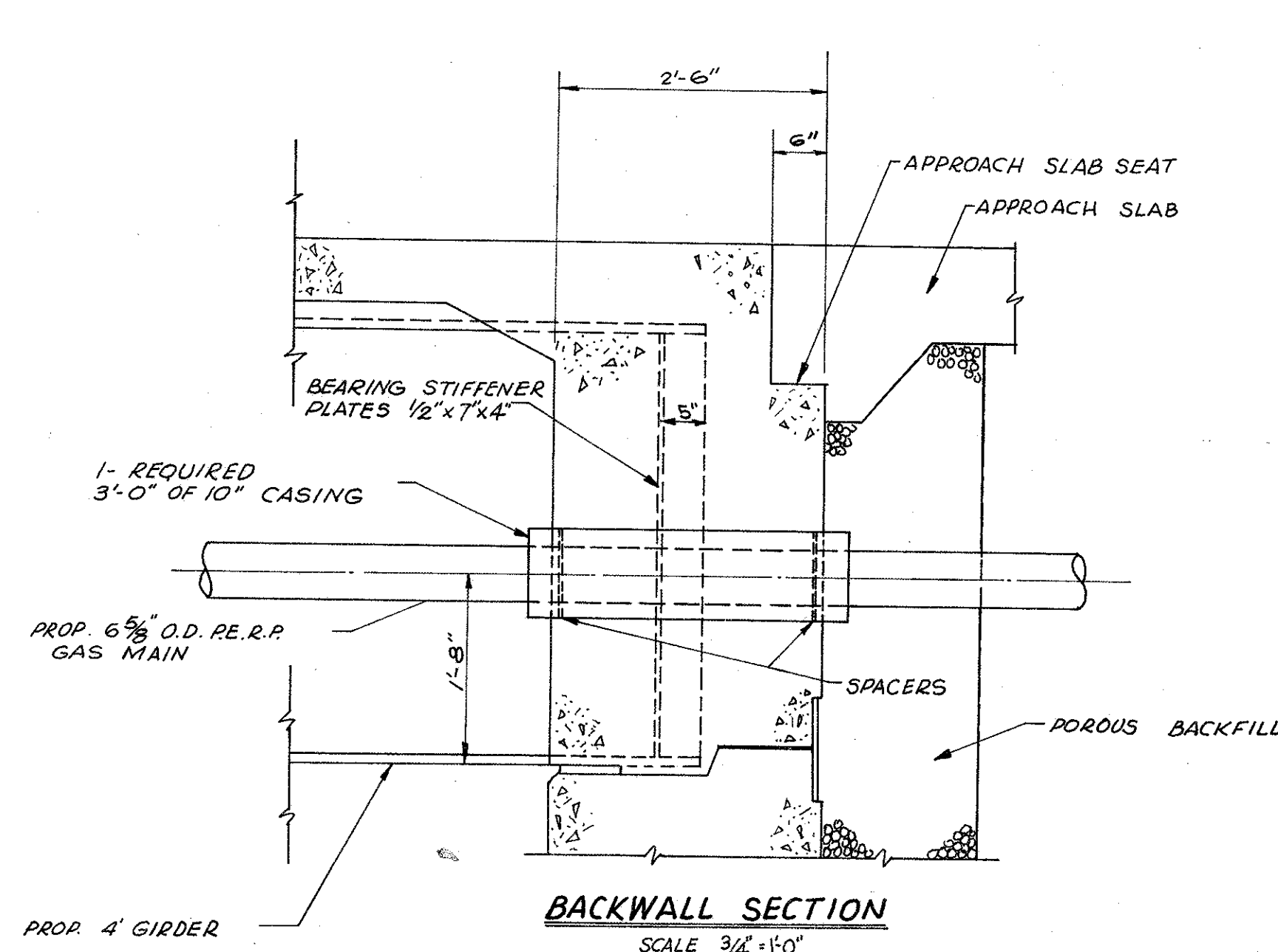
FED. RD. DIVISION	STATE	PROJECT	
2	OHIO		

LAKE COUNTY
LAK-283-470



NOTES
ANGLES (3" x 4" x 5/16") 1'-11" LONG, 8 REQUIRED (1-10" DIA. SLEEVE) (ALSO THE CUTTING OF 3/4" x 2" SLOT IN THE Ls) TO BE FURNISHED AND INSTALLED BY THE BRIDGE CONTRACTOR AND TO BE PAID FOR BY THE EAST OHIO GAS CO. TO THE STATE OF OHIO DEPT. OF HIGHWAYS.

THE EAST OHIO GAS CO. TO FURNISH AND INSTALL 6 5/8" O.D. GAS MAIN, 5/8" DIA. U-BOLTS, NUTS, WASHERS, POLYPROPYLENE PADS, AND VINYL TUBING.



NOTE: SEE SHEET NO. 4 FOR PLAN VIEW

GENERAL SUMMARY

ITEM	QUAN	UNIT	DESCRIPTION
ROADWAY			
202	75	LIN. FT.	GUARD RAIL REMOVED AND DISPOSED OF
203	488	CU. YD.	EXCAVATION INCLUDING EMBANKMENT CONSTRUCTION
203	167	SQ. YD.	SUBGRADE COMPACTION
606	24	LIN. FT.	GUARD RAIL, TYPE 4
PAVEMENT			
301	14	CU. YD.	BITUMINOUS AGGREGATE BASE: 702.01(85-100); 702.09, RT-11 or RT-12
310	19	CU. YD.	SUBBASE
402	2	CU. YD.	ASPHALT CONCRETE (70-85)
404	2	CU. YD.	ASPHALT CONCRETE (70-85)
611	167	SQ. YD.	REINFORCED CONCRETE APPROACH SLAB (T=13")
DRAINAGE			
605	18	LIN. FT.	AGGREGATE DRAINS
EROSION CONTROL			
601	270	CU. YD.	DUMP ROCK FILL, TYPE A, AS PER PLAN
659	150	SQ. YD.	SEEDING AND MULCHING
GENERAL			
614	LUMP	LUMP	MAINTAINING TRAFFIC
619	LUMP	LUMP	FIELD OFFICE
	LUMP	LUMP	CONSTRUCTION LAYOUT, STAKES
WATER WORK (100% CITY OF EASTLAKE PARTICIPATION)			
SPECIAL	LUMP	LUMP	10" WATER MAIN STEEL PIPE AND APPURTENANCES
SPECIAL	LUMP	LUMP	12" WATER MAIN STEEL PIPE AND APPURTENANCES
STRUCTURES			
BR. NO. LAK-283-0472-FOR QUANTITIES SEE SHEET NO. 8			