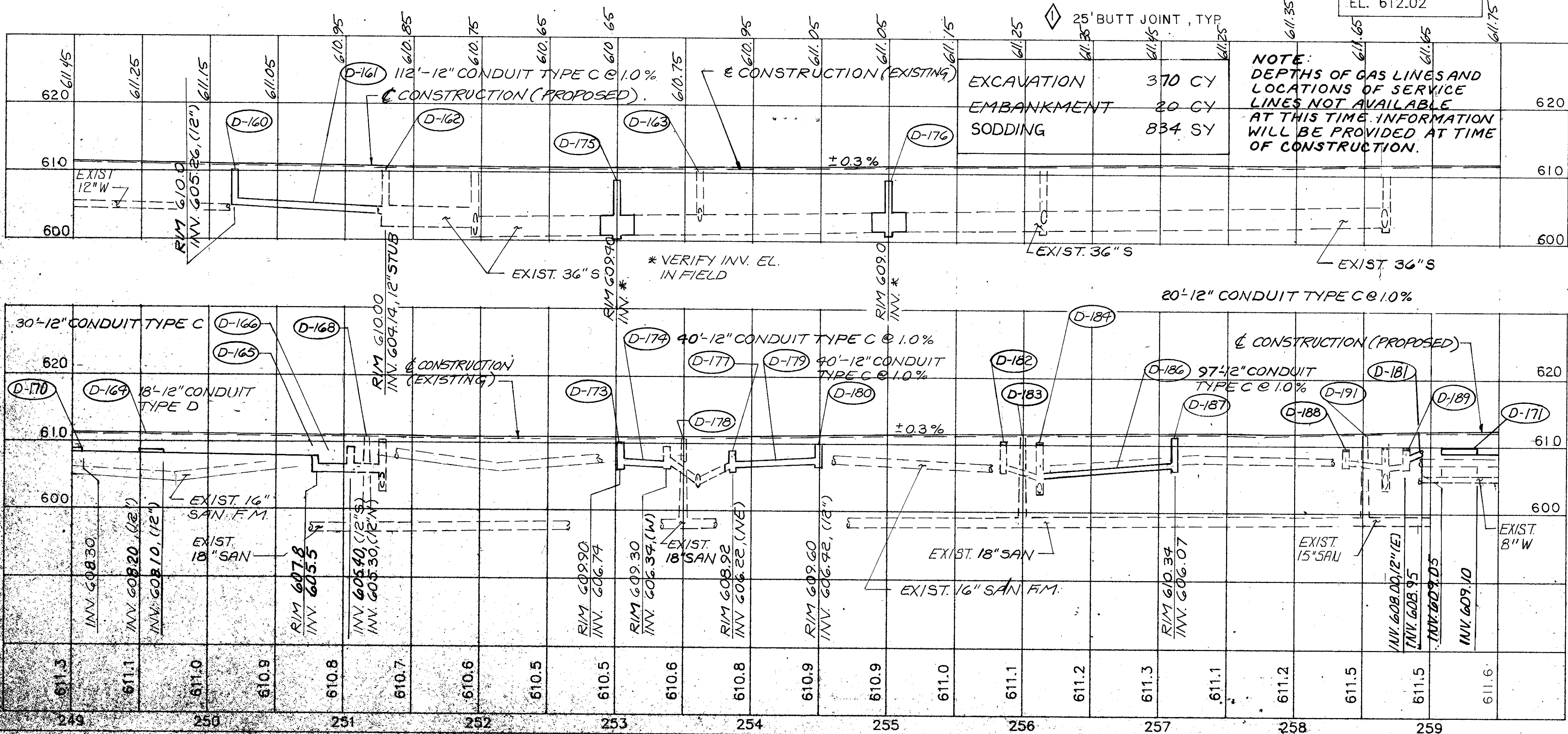
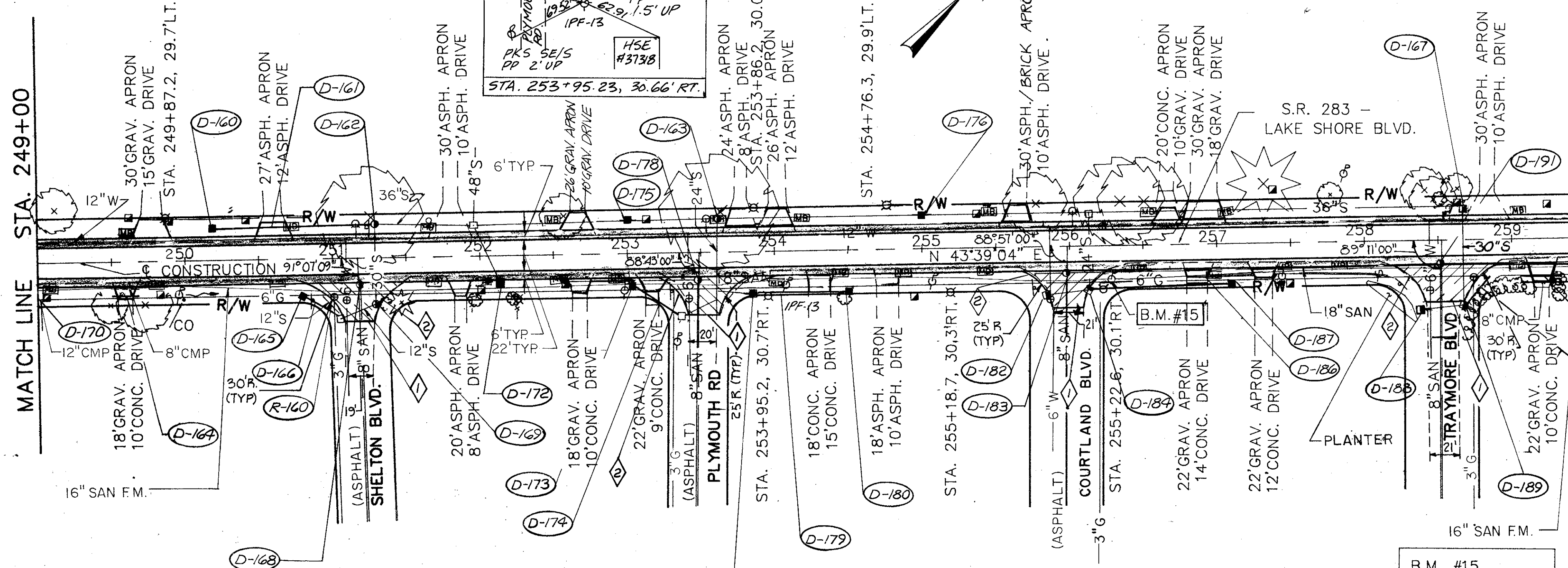


MATCH LINE STA. 249+00

MATCH LINE STA. 259+50



REF	LOCATION	LIN. FT.
R-160	STA. 250+92 TO 251+06 RT.	18'
TOTALS		18

REF	LOCATION	DRAINAGE								
		CATCH BASIN 2-2-B	CATCH BASIN 2-4	12" CONDUIT TYPE C, 706.02	MANHOLE ADJUSTED TO GRADE	12" CONDUIT TYPE D, 706.02	CATCH BASIN ADJUSTED TO GRADE	CATCH BASIN No. 7	30" CONDUIT TYPE C, 706.02	
D-160	STA. 250+15, 23' LT.	1								
D-161	STA. 250+15 TO 251+27, LT.		112							
D-162	STA. 251+27, 23' LT.			1						
D-163	STA. 253+60, 23' LT.			1						
D-164	STA. 249+50 TO 249+68, 23' RT.				18					
D-165	STA. 250+80, 26' RT.						1			
D-166	STA. 250+80 TO 251+06, RT.		30							
D-167	STA. 258+67, 21' LT.					1				
D-168	STA. 251+18, RT.			1						
D-169	STA. 251+29, RT.			1						
D-170	STA. 249+00 TO 249+07, 23' RT.				7					
D-171	STA. 259+08 TO 259+32, 26' RT.				25					
D-172	STA. 252+15, 18.5' RT.					1				
D-173	STA. 253+10, 28' RT.	1								
D-174	STA. 253+10 TO 253+37, RT.		30							
D-175	STA. 253+00, 22' LT.			1				8		
D-176	STA. 255+00, 22' LT.			1				8		
D-177	STA. 253+85, 28' RT.			1						
D-178	STA. 253+40, 19' RT.					1				
D-179	STA. 253+85 TO 254+40, RT.			40						
D-180	STA. 254+90, 28' RT.						1			
D-181	STA. 258+67 TO 258+85, RT.							25		
D-182	STA. 255+84, 33' RT.						1			
D-183	STA. 255+98, 18' RT.							1		
D-184	STA. 256+13, 30' RT.							1		
D-186	STA. 256+32 TO 257+10, RT.			97						
D-187	STA. 257+10, 28' RT.							1		
D-188	STA. 258+37, 48' RT.							1		
D-189	STA. 258+67, 45' RT.							1		
D-191	STA. 258+60, 16' RT.							1		
TOTALS		3	2	338	7	50	6	2	1	16

S.R. 283 PLAN & PROFILE STA. 249+00 TO 259+00