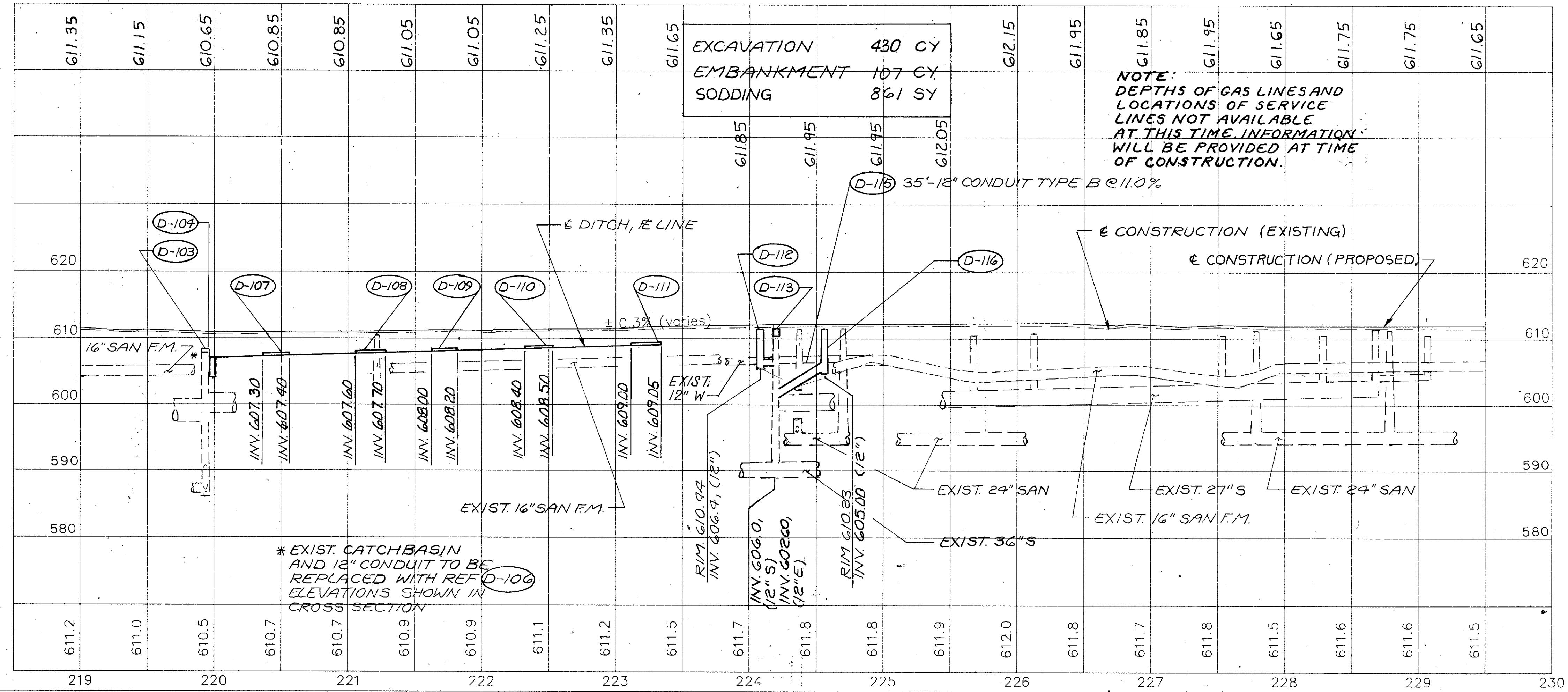
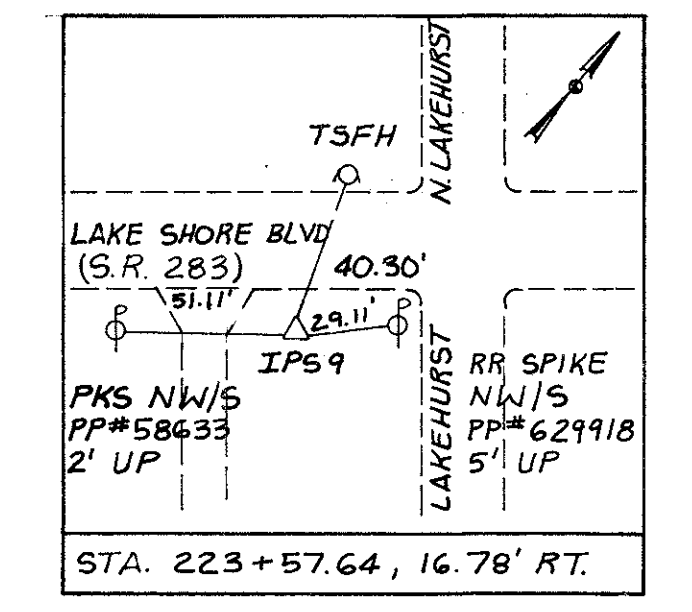
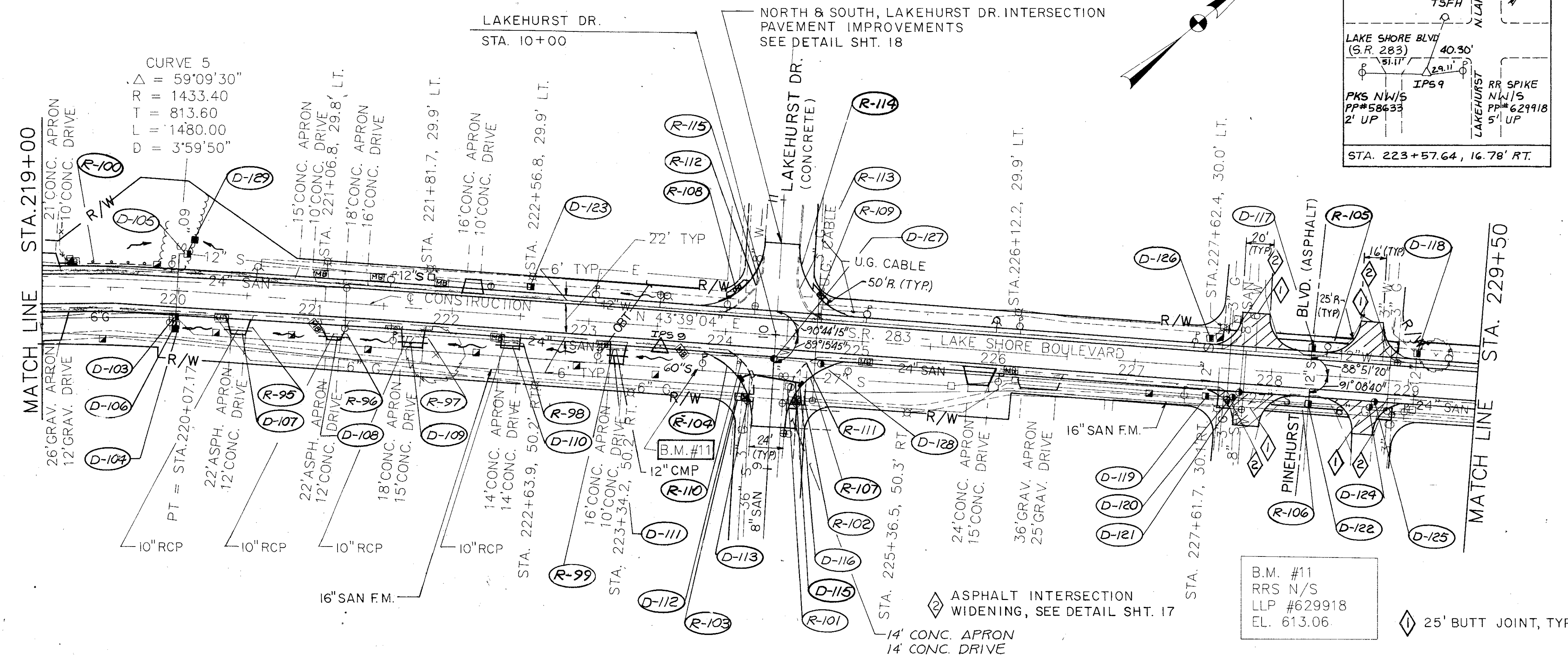


LAK-283-3.83



REF	LOCATION	202	202	202	202	608	609	202	
		PIPE REMOVED 24" AND UNDER	CURB REMOVED	INLET REMOVED	WALK REMOVED	4" CONCRETE WALK	CURB RAMP TYPE 2	CURB TYPE 6 AS PER PLAN	GUARDRAIL REMOVED
		LN.FT.	LN.FT.	EACH	SQ.FT.	SQ.FT.	EA.	LN.FT.	LN.FT.
R-95	STA. 220+36 TO 220+56, RT.	20							
R-96	STA. 221+04 TO 221+25, RT.	21							
R-97	STA. 221+62 TO 221+84, RT.	22							
R-98	STA. 222+33 TO 222+53, RT.	20							
R-99	STA. 223+17 TO 223+33, RT.	16							
R-100	STA. 219+32 TO 219+82, LT.								50
R-101	STA. 224+49, 37', RT.	34							
R-102	STA. 224+47 TO 224+62, RT.				190	100	1		
R-103	STA. 224+11 TO 224+24, RT.				65	50	1		
R-104	STA. 223+74.5, RT TO 9+33, LT.							79	
R-105	STA. 228+03 TO 228+57, LT.				208	208			
R-106	STA. 227+62 TO 228+87, RT.				300	300			
R-107	STA. 9+33 RT TO 224+98.5, RT.							79	
R-108	STA. 223+98 TO 224+16, LT.				125	95	1		
R-109	STA. 223+98 TO 224+87, LT.				187	85	1		
R-110	STA. 224+03, RT TO 9+33, LT.		63						
R-111	STA. 9+33, RT TO 224+68, RT.		63						
R-112	STA. 224+00, LT TO 10+67, LT.		62						
R-113	STA. 10+67, RT TO 224+68, LT.		62						
R-114	STA. 10+67, RT TO 224+98.5, LT.							79	
R-115	STA. 223+74.5, LT TO 10+67, LT.							79	
TOTALS		133	250	1	1075	838	4	3/6	50

REF	LOCATION	604	604	604	603	604	603		
		MANHOLE ADJUSTED TO GRADE	CATCH BASIN 2-2-B	CATCH BASIN 3-A W/ V GRATE	CATCH BASIN ADJUSTED TO GRADE	10" CONDUIT TYPE D 706.08	INLET MISC. MODIFIED AS PER PLAN		
		EACH	EACH	EACH	LN.FT.	EACH	LN.FT.		
D-103	STA. 219+98, 20' RT.								
D-104	STA. 219+98, 27' RT.		1						
D-105	STA. 220+05, 28' LT.			1					
D-106	STA. 219+98, RT.						12		
D-107	STA. 220+36 TO 220+56, 26' RT.				20				
D-108	STA. 221+05 TO 221+25, 25' RT.				20				
D-109	STA. 221+63 TO 221+84, 24.5' RT.				21				
D-110	STA. 222+33 TO 222+53, 22' RT.				20				
D-111	STA. 223+13 TO 223+33, RT.				20				
D-112	STA. 224+13, 35' RT.			1			8		
D-113	STA. 224+21, RT.								
D-115	STA. 224+21 TO 224+56, RT.						35		
D-116	STA. 224+60, 35' RT.		1						
D-117	STA. 228+28, 20' LT.			1					
D-118	STA. 229+04, 20' LT.			1					
D-119	STA. 227+53, 20' RT.			1					
D-120	STA. 227+62, 20' RT.	1							
D-121	STA. 227+78, 16' RT.	1							
D-122	STA. 228+28, 20' RT.			1					
D-123	STA. 222+56, 22' LT.			1					
D-124	STA. 228+76, 16' RT.	1							
D-125	STA. 228+74, 20' RT.	1							
D-126	STA. 227+53, 20' LT.			1					
D-127	STA. 224+37, 18' RT.	1							
D-128	STA. 224+70, 19' RT.	1							
D-129	STA. 220+10, 35' LT.		1				10		
TOTALS		6	2	2	8	101	1	22	43

S.R. 283 PLAN & PROFILE STA. 219+00 TO 229+50