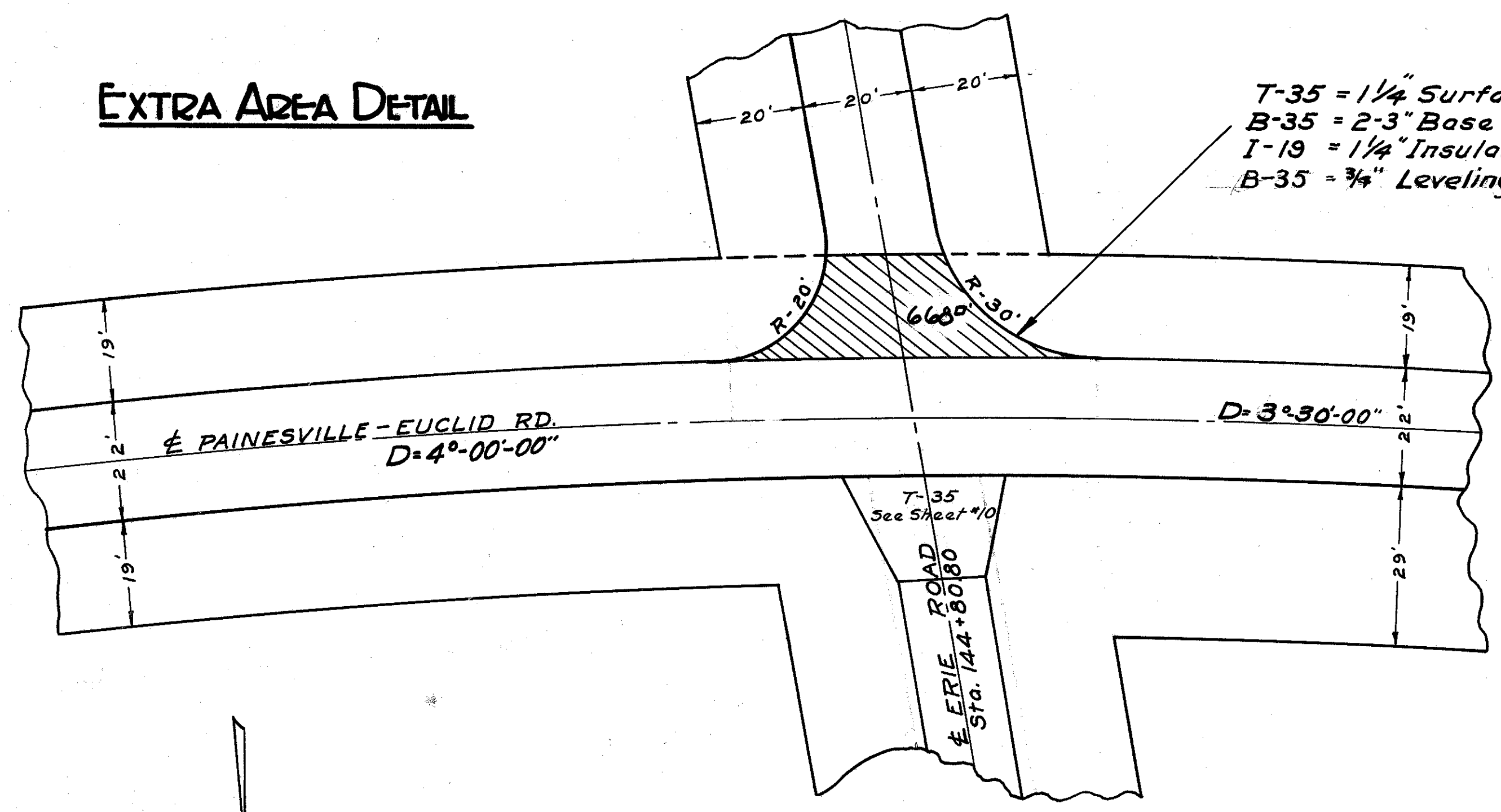


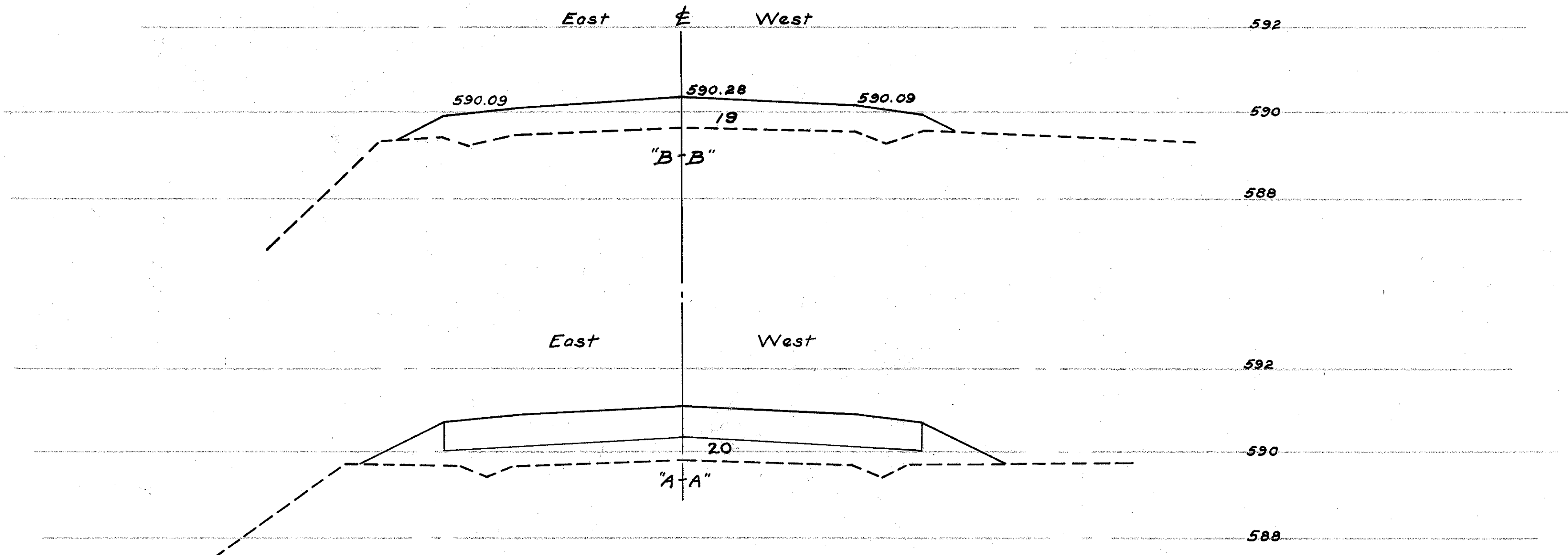
Painesville Euclid Road
S.H. 520 Sec. B(Pl.) & Lakeline
Lake County

EXTRA AREA DETAIL



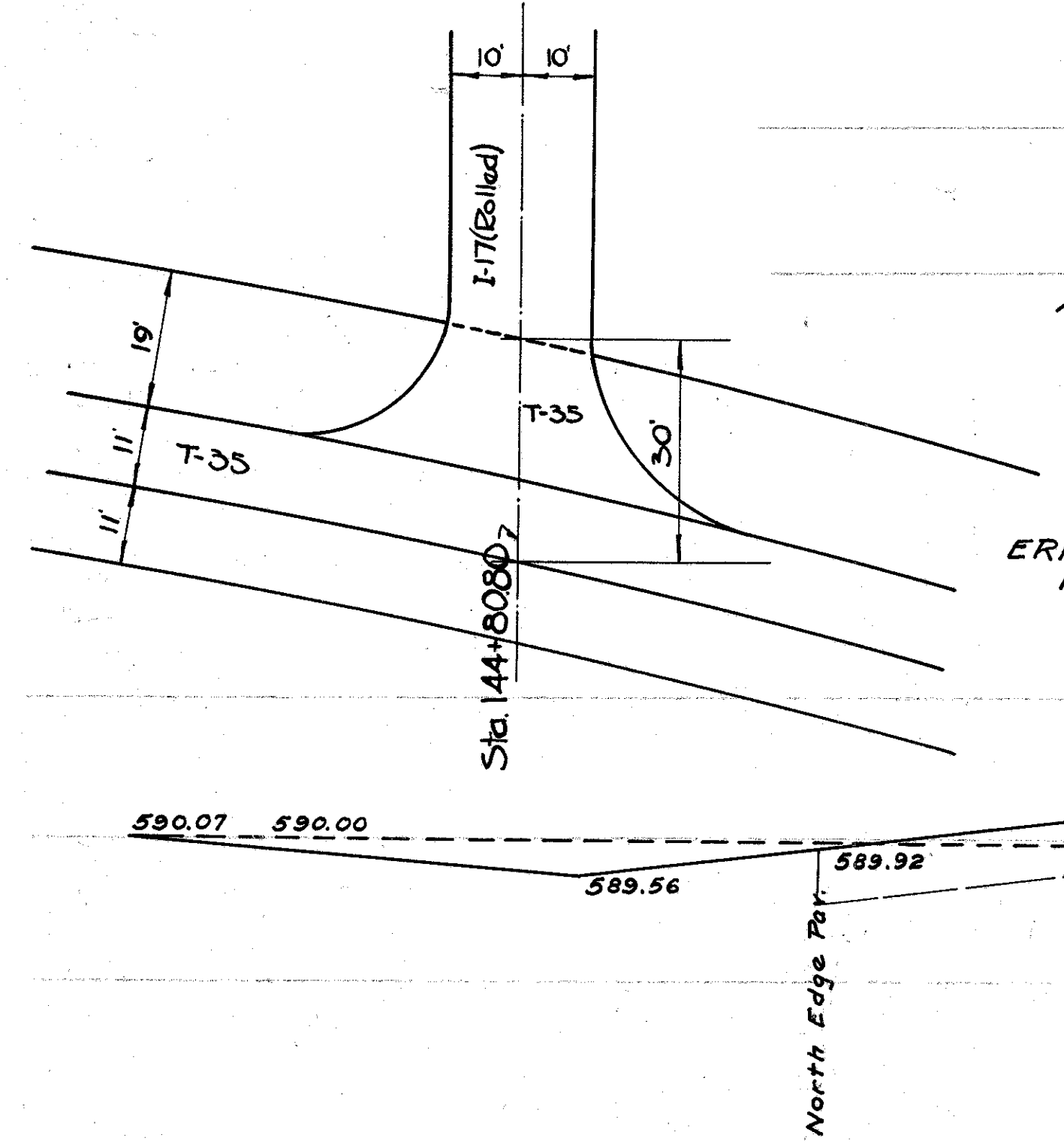
T-35 = 1 1/4" Surface Course
B-35 = 2-3" Base Course
I-19 = 1 1/4" Insulation Course
B-35 = 3/4" Leveling Course

ERIE ROAD RAMP & INTERSECTION
SCALE 1" = 20'



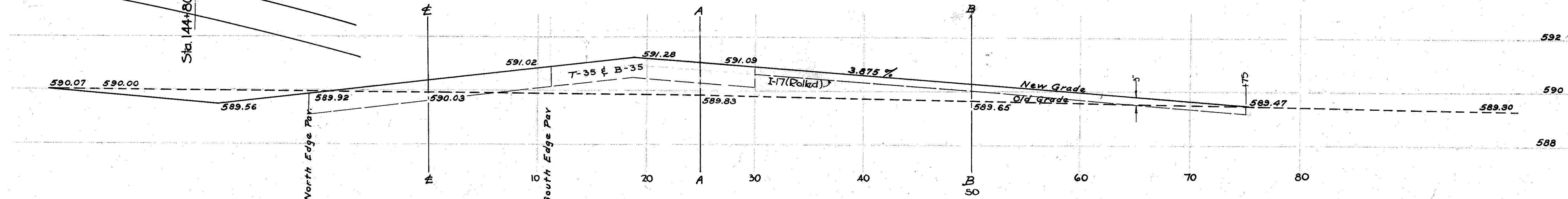
EARTHWORK				
STA.	AREA	SUM	DIST	CUYD.
0+19	0			
		20	25	2
0+25	20	39	25	18
0+50	19			
		19	25	9
0+75	0			
TOTAL				29

QUANTITIES	
T-35... 1 1/4" Surface Course	2.6 C.Y.
B-35... 2-3" Base Courses	1.24 C.Y.
I-19... 1 1/4" Insulation Course	7.425 C.Y.
Embankment	29 C.Y.
I-17 Agg. in Approach (Rolled)	8.3 C.Y.
B-35... 3/4" Leveling Course	1.6 C.Y.



ERIE RD. (SOUTH)
144+80.80

SCALE { HOR 1" = 5'
VER 1" = 2'



PROFILE
HOR. 1" = 5'
VER. 1" = 2'