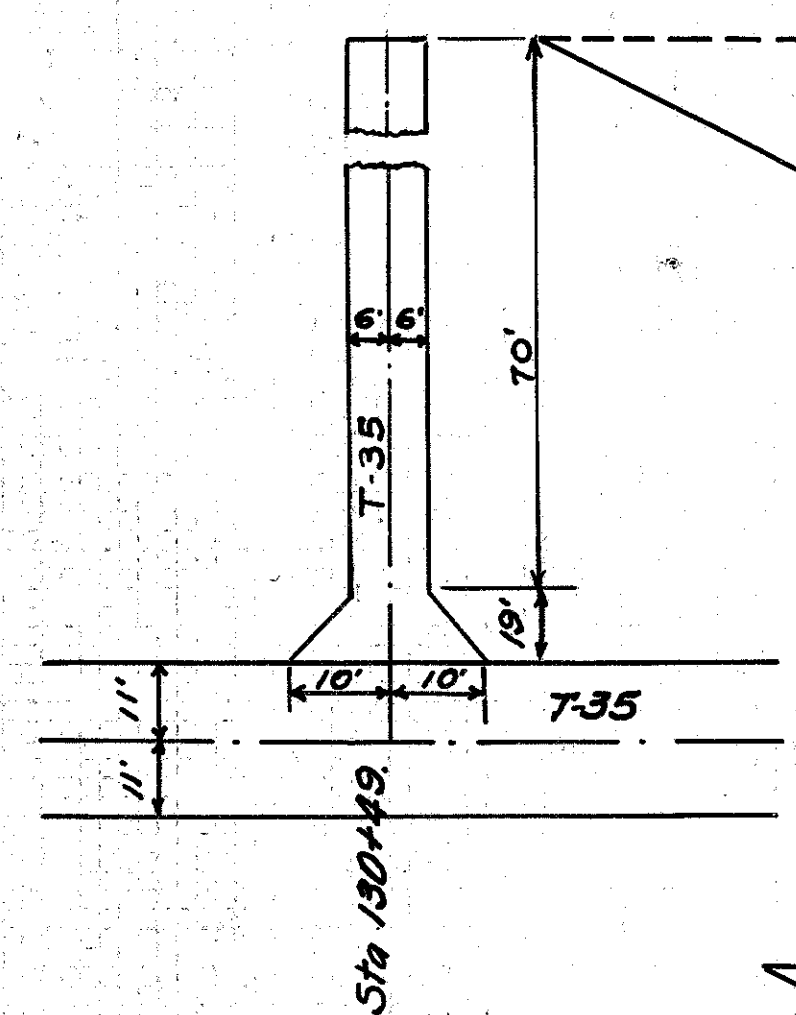
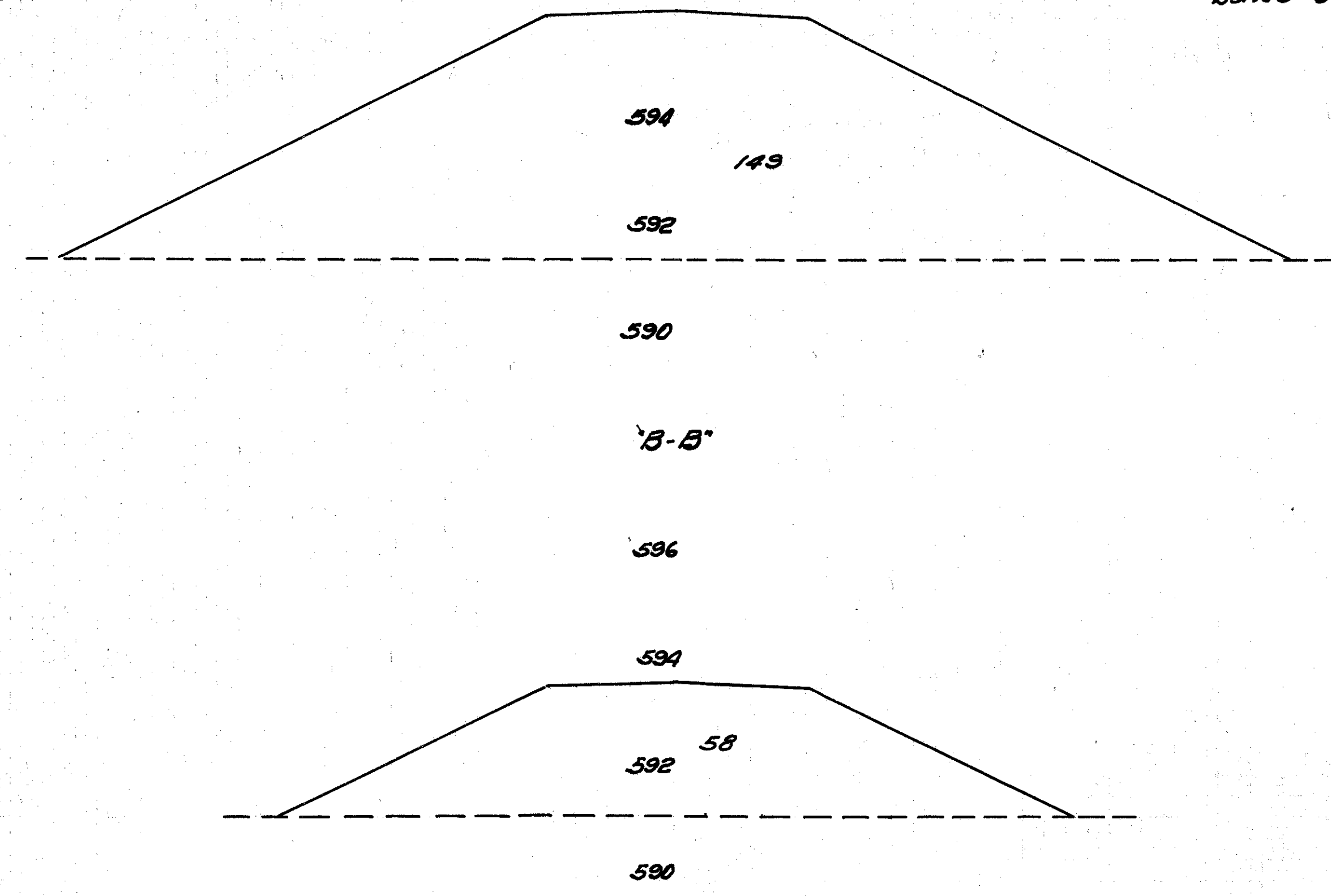
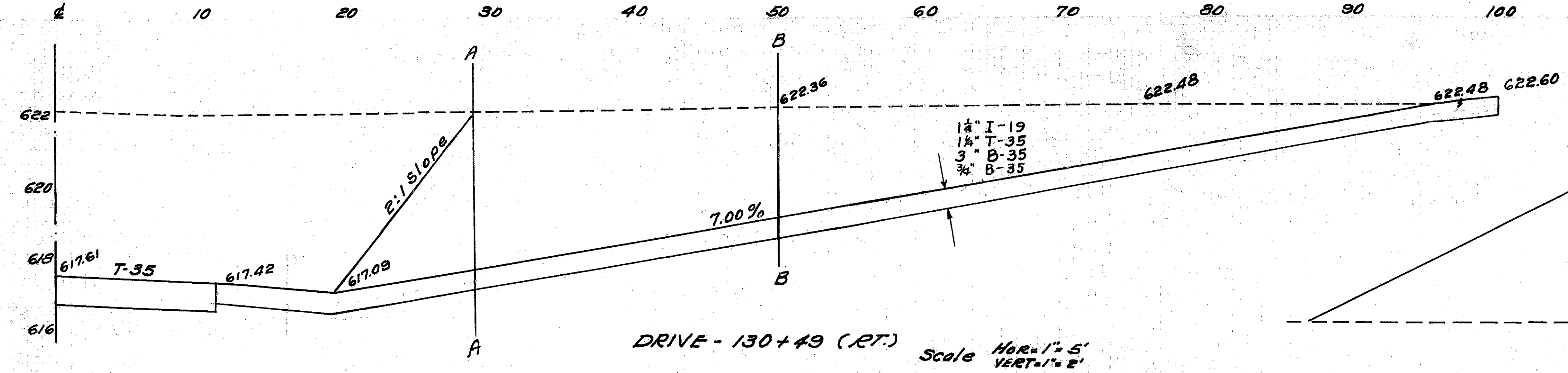
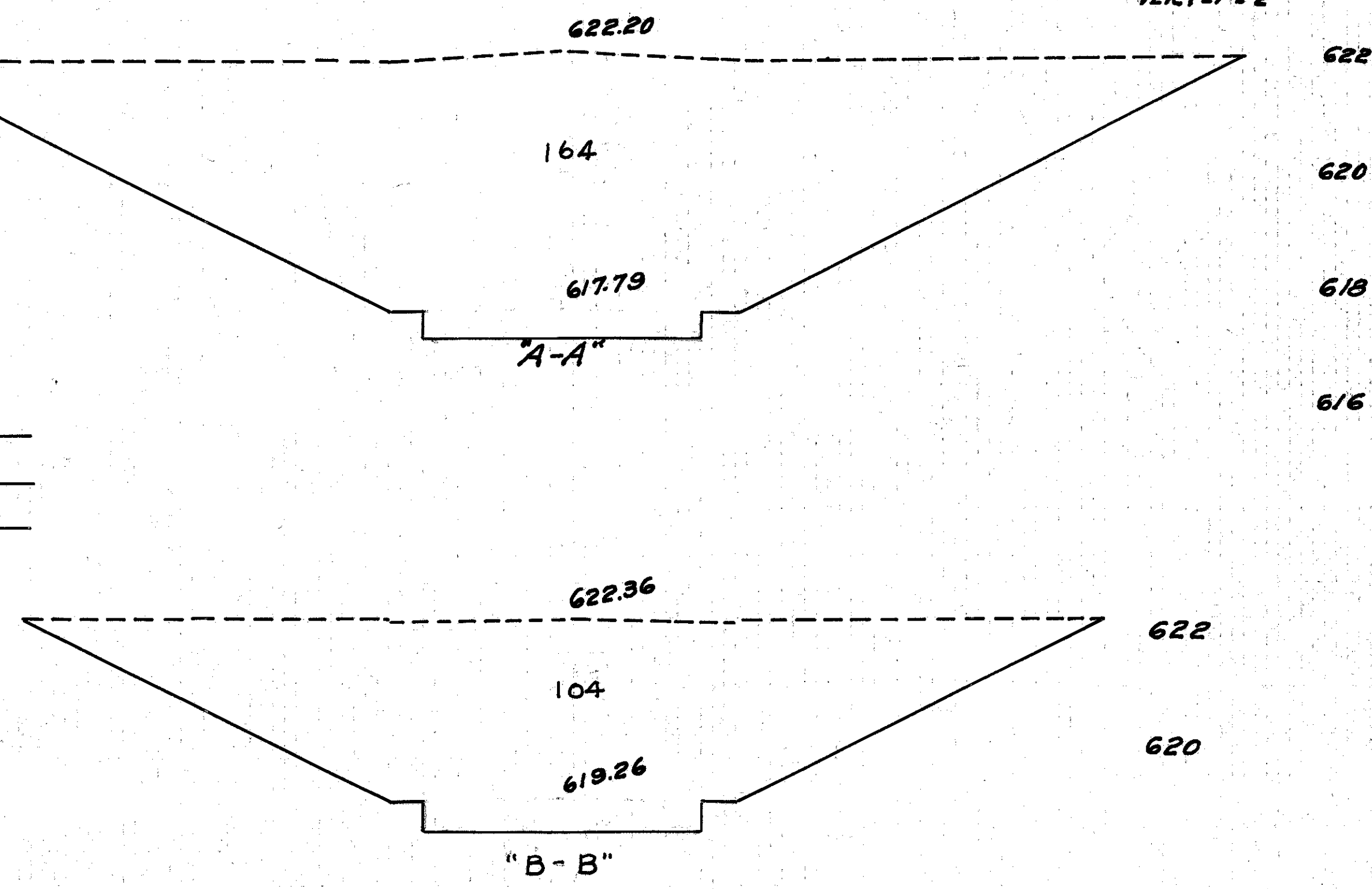


10 OHIO 1941
Painesville Euclid Road
S.H. 520 Sec. B (Pl.) B. Lakeline
Lake County

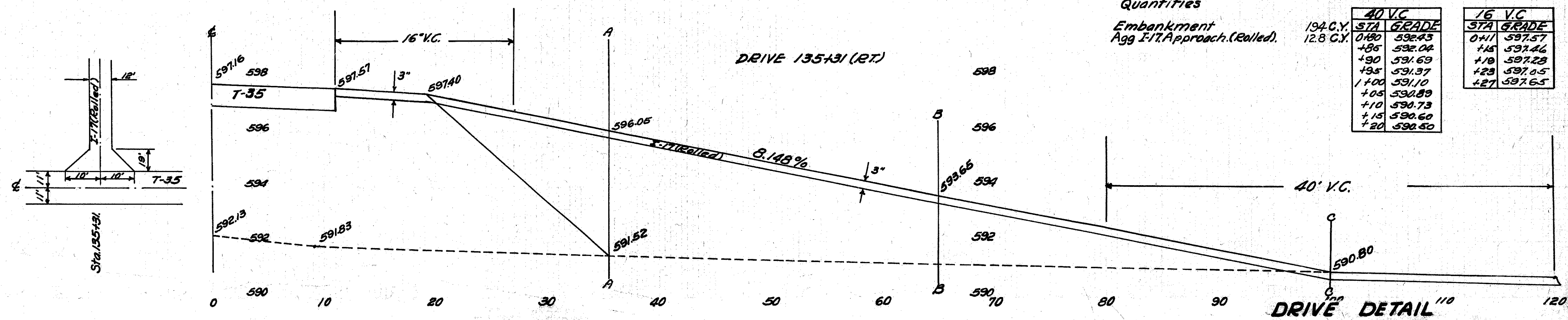


Quantities
Excavation 289 C.Y.
T-35 1/2" Top course 44 C.Y.
B-35 1-3" Base " 10.6 C.Y.
I-19 1 1/2" Insul. " 127.1 S.Y.
B-35 3/4" Leveling Course 27 C.Y.

STA	AREA	DIST	Cu. Yds.
0+0	0		
0+29	164	29	88
0+50	268	21	104
0+50	104	50	97
1+00	0		
TOTAL			289

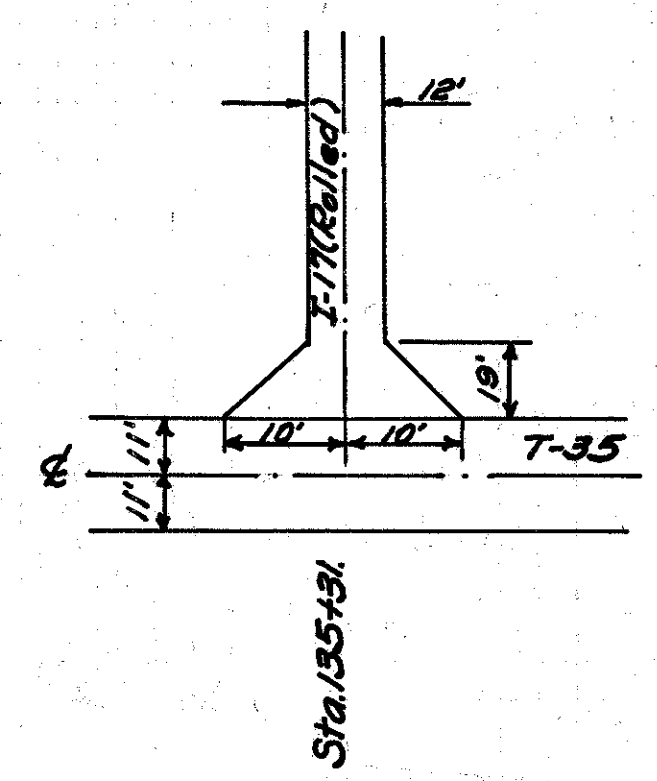


Sta.	End Area	Sum Area	Dist	Cu. Yd.
0+35.5	0			
0+35.5	149	149	16	44
0+65	58	207	29.5	113
1+00	0	58	35	37
				194



Quantities
Embankment 194 C.Y.
Agg I.T. Approach (Colled) 12.8 C.Y.

40' V.C.	16' V.C.		
STA	GRADE	STA	GRADE
0+80	592.43	0+11	597.57
+85	592.04	+15	597.46
+90	591.69	+18	597.28
+95	591.37	+20	597.05
+100	591.10	+27	597.65
+105	590.89		
+110	590.73		
+115	590.60		
+120	590.50		



DRIVE DETAIL 110