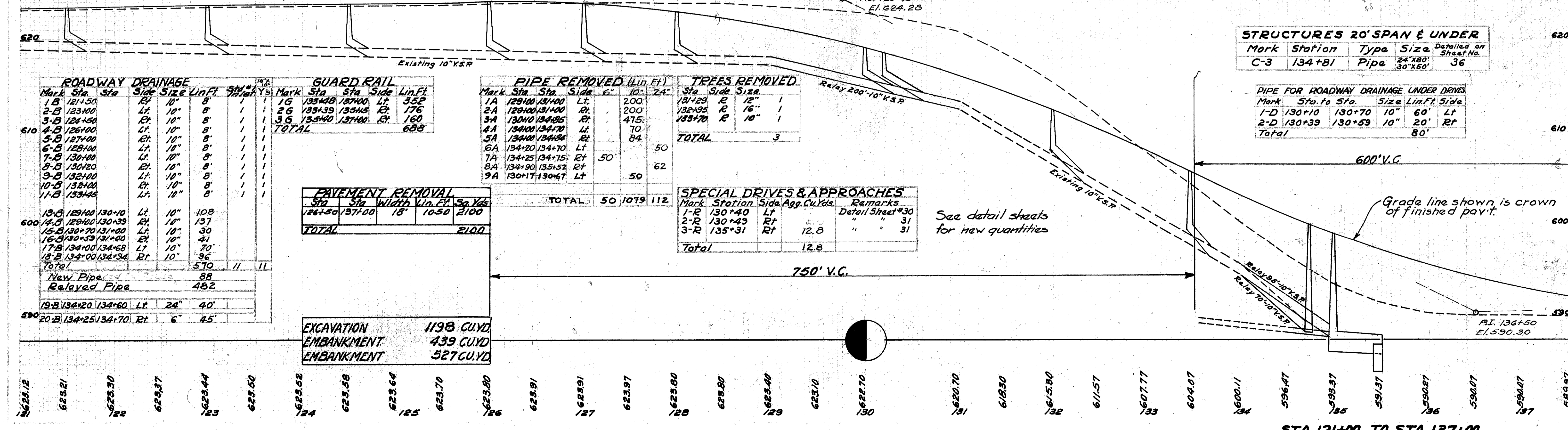


121	623.91	122	623.40	123	623.49	124	623.56	125	623.63	126	623.69	127	623.71	128	623.77	129	623.83	130	623.89	131	624.04	132	624.05	133	624.02	134	623.98	135	623.82	136	623.65	137	623.44	138	623.19	139	622.90	140	622.56	141	622.18	142	621.76	143	621.29	144	620.78	145	620.23	146	619.56	147	618.99	148	618.31	149	617.58	150	616.82	151	616.00	152	615.15	153	614.25	154	613.31	155	612.32	156	611.30	157	610.22	158	609.12	159	607.96	160	606.76	161	605.52	162	604.29	163	603.09	164	601.97	165	600.89	166	599.86	167	598.89	168	597.97	169	597.10	170	596.28	171	595.52	172	594.81	173	594.14	174	593.54	175	592.99	176	592.49	177	592.04
-----	--------	-----	--------	-----	--------	-----	--------	-----	--------	-----	--------	-----	--------	-----	--------	-----	--------	-----	--------	-----	--------	-----	--------	-----	--------	-----	--------	-----	--------	-----	--------	-----	--------	-----	--------	-----	--------	-----	--------	-----	--------	-----	--------	-----	--------	-----	--------	-----	--------	-----	--------	-----	--------	-----	--------	-----	--------	-----	--------	-----	--------	-----	--------	-----	--------	-----	--------	-----	--------	-----	--------	-----	--------	-----	--------	-----	--------	-----	--------	-----	--------	-----	--------	-----	--------	-----	--------	-----	--------	-----	--------	-----	--------	-----	--------	-----	--------	-----	--------	-----	--------	-----	--------	-----	--------	-----	--------	-----	--------	-----	--------	-----	--------

B.M. #19 SPIKE IN C.E.I. POLE
 LEFT OF STA. 124+00 EL. 624.512

B.M. #20 SPIKE IN C.E.I. POLE
 LEFT OF STA. 130+55 EL. 622.446

B.M. #22 SPIKE IN C.E.I. POLE
 LEFT OF STA. 136+80 EL. 590.875



STRUCTURES 20' SPAN & UNDER

Mark	Station	Type	Size	Detailled on Sheet No.
C-3	134+81	Pipe	24"x80' 30"x50'	36

PIPE FOR ROADWAY DRAINAGE UNDER DRIVES

Mark	Sta. to Sta.	Size	Lin. Ft.	Side
1-D	130+10	130+70	10"	60' Lt
2-D	130+39	130+59	10"	20' Rt
Total			80'	

ROADWAY DRAINAGE

Mark	Sta.	Sta.	Side	Size	Lin. Ft.	Sta. #	Yds.
1-B	121+50		Lt.	10"	8'	1	1
2-B	123+00		Rt.	10"	8'	1	1
3-B	124+50		Lt.	10"	8'	1	1
4-B	126+00		Lt.	10"	8'	1	1
5-B	127+00		Rt.	10"	8'	1	1
6-B	128+00		Lt.	10"	8'	1	1
7-B	130+00		Lt.	10"	8'	1	1
8-B	130+20		Rt.	10"	8'	1	1
9-B	132+00		Lt.	10"	8'	1	1
10-B	132+00		Lt.	10"	8'	1	1
11-B	133+45		Lt.	10"	8'	1	1
Total					88	11	11

GUARD RAIL

Mark	Sta.	Sta.	Side	Lin. Ft.
1-G	133+48	137+00	Lt.	352
2-G	133+39	135+15	Rt.	176
3-G	135+40	137+00	Rt.	160
TOTAL				688

PIPE REMOVED (LID. FT.)

Mark	Sta.	Sta.	Side	6"	10"	24"
1-A	129+00	131+00	Lt.	200		
2-A	129+00	131+00	Rt.	200		
3-A	130+00	134+85	Rt.	475		
4-A	130+00	134+70	Lt.	70		
5-A	134+00	134+84	Rt.	84		
6-A	134+20	134+70	Lt.		50	
7-A	134+25	134+75	Rt.	50		
8-A	134+90	135+52	Rt.		62	
9-A	130+17	130+67	Lt.		50	
TOTAL				50	1079	112

TREES REMOVED

Sta.	Side	Size	
131+29	R	12"	1
132+95	R	16"	1
133+70	R	10"	1
TOTAL			3

PAVEMENT REMOVAL

Sta.	Sta.	Width	Lin. Ft.	Sq. Yds.
126+50	137+00	18'	1050	2100
TOTAL				2100

SPECIAL DRIVES & APPROACHES

Mark	Station	Side	Agg. Cu. Yds.	Remarks
1-R	130+40	Lt		Detail Sheet #30
2-R	130+49	Rt		" " 31
3-R	135+31	Rt	12.8	" " 31
Total			12.8	

EXCAVATION 1198 CU.YD.
EMBANKMENT 439 CU.YD.
EMBANKMENT 327 CU.YD.

See detail sheets for new quantities