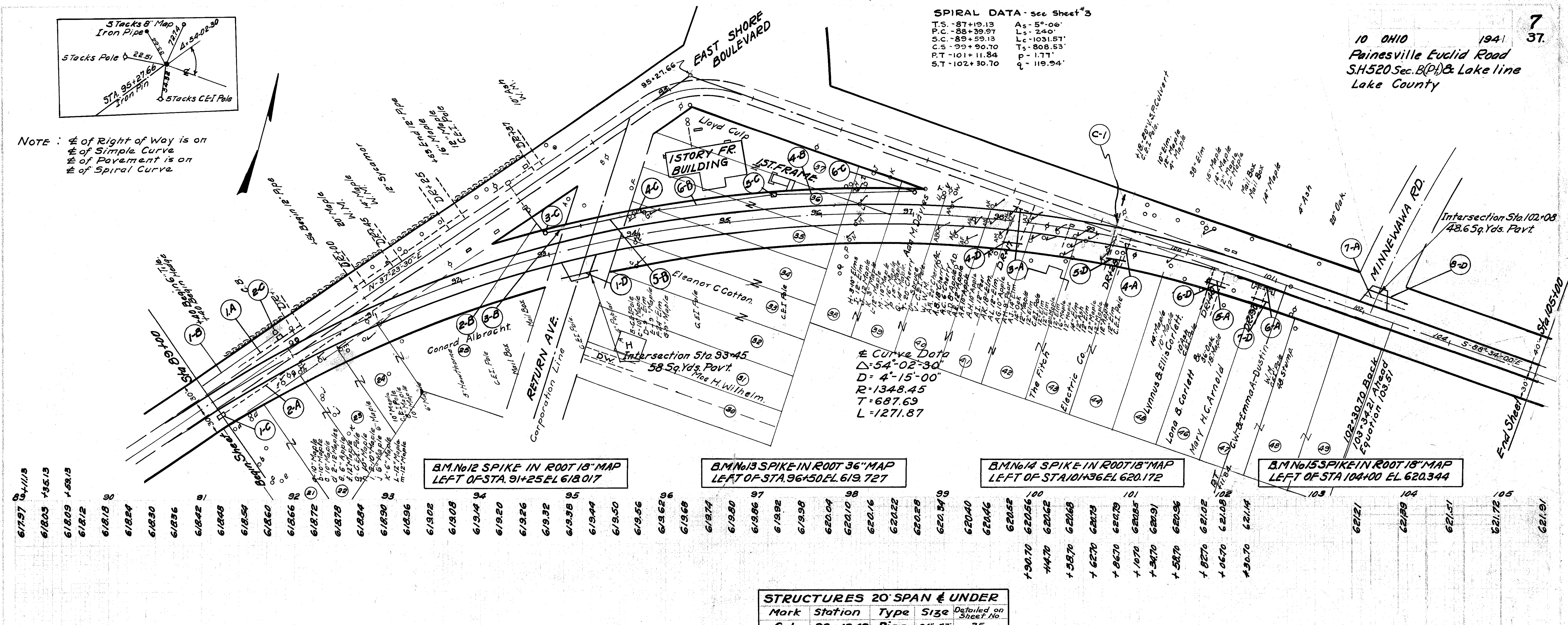


NOTE: 1/4 of Right of Way is on 1/4 of Simple Curve
1/2 of Pavement is on 1/2 of Spiral Curve

SPIRAL DATA - see Sheet #3

T.S. - 87+19.13	A _s - 5°-06'
P.C. - 88+39.97	L _s - 240'
S.C. - 89+59.13	L _c - 1031.57'
C.S. - 90+90.70	T _s - 808.53'
P.T. - 101+11.84	p - 1.77'
S.T. - 102+30.70	q - 119.94'

10 OHIO 1941 7 37
Painesville Euclid Road
SH520 Sec. B(P) & Lake line
Lake County



Curve Data
Δ = 54°-02'-30"
D = 4°-15'-00"
R = 1348.45
T = 687.69
L = 1271.87

B.M. No 12 SPIKE IN ROOT 18" MAP
LEFT OF STA. 91+25 EL. 618.017

B.M. No 13 SPIKE IN ROOT 36" MAP
LEFT OF STA. 96+50 EL. 619.727

B.M. No 14 SPIKE IN ROOT 18" MAP
LEFT OF STA. 101+36 EL. 620.172

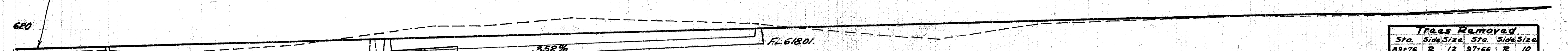
B.M. No 15 SPIKE IN ROOT 18" MAP
LEFT OF STA. 104+00 EL. 620.344

617.97	618.05	618.09	618.12	618.18	618.24	618.30	618.36	618.42	618.48	618.54	618.60	618.66	618.72	618.78	618.84	618.90	618.96	619.02	619.08	619.14	619.20	619.26	619.32	619.38	619.44	619.50	619.56	619.62	619.68	619.74	619.80	619.86	619.92	619.98	620.04	620.10	620.16	620.22	620.28	620.34	620.40	620.46	620.52	620.58	620.64	620.70	620.76	620.82	620.88	620.94	621.00	621.06	621.12	621.18	621.24	621.30	621.36	621.42	621.48	621.54	621.60	621.66	621.72	621.78	621.84	621.90
--------	--------	--------	--------	--------	--------	--------	--------	--------	--------	--------	--------	--------	--------	--------	--------	--------	--------	--------	--------	--------	--------	--------	--------	--------	--------	--------	--------	--------	--------	--------	--------	--------	--------	--------	--------	--------	--------	--------	--------	--------	--------	--------	--------	--------	--------	--------	--------	--------	--------	--------	--------	--------	--------	--------	--------	--------	--------	--------	--------	--------	--------	--------	--------	--------	--------	--------

STRUCTURES 20 SPAN & UNDER

Mark	Station	Type	Size	Detailed on Sheet No.
C-1	99+19.49	Pipe	24"x47"	35

Grade line shown is crown of finished part.



PAVEMENT REMOVAL*

Sta. to	Sta.	Width	Length	Sq. Yds.
89+00	92+25	18	325	650
98+75	103+34.21	18	459.21	318.4
Total				1568.4

* Stations are along old Tangents

PIPE REMOVED

Mark	Sta.	Sta.	Side	6"	10"	12"
1A	89+40	90+30	L	90		
2A	89+00	91+30	R		230	
3A	98+09	98+25	L		16	
4A	99+20	99+36	R		16	
5A	100+30	100+50	R		20	
6A	100+53	100+87	R		14	
7A	102+95	103+44	L		46	
TOTAL				90.82	30	TOTAL

ROADWAY DRAINAGE

Mark	Sta.	Sta.	Size	Lin. Ft.	Side
1-B	89+00	90+01	12"	100	L
2-B	92+85	93+00	12"	34	L
3-B	95+00	95+40	12"	59	L
4-B	95+50	97+00	12"	148	L
TOTAL				321	

ROADWAY DRAINAGE UNDER DRIVES

Mark	Sta.	Sta.	Size	Lin. Ft.	Side
5-B	93+40	94+00	12"	59	L
6-B	94+00	95+50	12"	148	L
TOTAL				207	

CATCH BASIN

Mark	Sta.	Side	#1 Inlet	#2	#2	Without side opening
1-C	89+00	R		1	1	
2-C	90+00	L	1			
3-C	93+00	L		1		
4-C	94+00	L			1	
5-C	95+00	L			1	
6-C	97+00	L	1			
TOTAL			3	1	2	

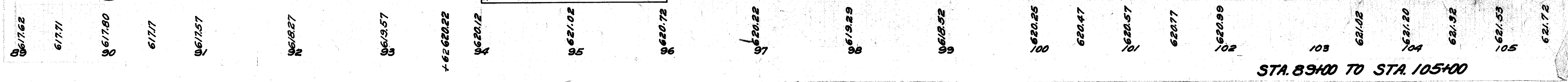
PIPE FOR DRIVEWAYS

Mark	Sta.	Sta.	Size	Lin. Ft.	Side
1-D	93+05	93+45	12"	40	R
4-D	98+07	98+27	12"	20	R
5-D	99+18	99+38	12"	20	R
6-D	100+30	100+50	12"	20	R
7-D	100+80	101+00	12"	20	R
8-D	101+95	102+41	12"	46	L
TOTAL				166	

Trees Removed

Sta.	Side	Size	Sta.	Side	Size
89+76	R	12	97+66	R	10
90+01	R	10	97+80	R	10
90+25	R	12	97+85	L	18
90+50	R	12	97+97	R	9
91+00	R	10	98+26	L	14
90+75	R	10	98+08	L	12
91+00	R	10	98+26	L	14
93+90	L	10	98+30	R	14
93+98	R	9	98+44	R	12
93+96	R	10	98+58	R	12
94+12	L	9	98+66	R	12
96+24	R	16	98+70	R	16
96+33	L	10	98+75	R	14
96+33	R	10	98+90	R	12
96+40	L	12	99+12	R	12
97+27	R	18	99+15	R	12
97+42	L	20	99+85	R	14
97+48	R	12	100+14	L	12
97+59	R	10	97+27	L	12
Sub Total		18			18
Total					36

EXCAVATION 1534 CU.YD
EMBANKMENT 879 CU.YD
EMBANKMENT 1055 CU.YD



STA. 89+00 TO STA. 105+00