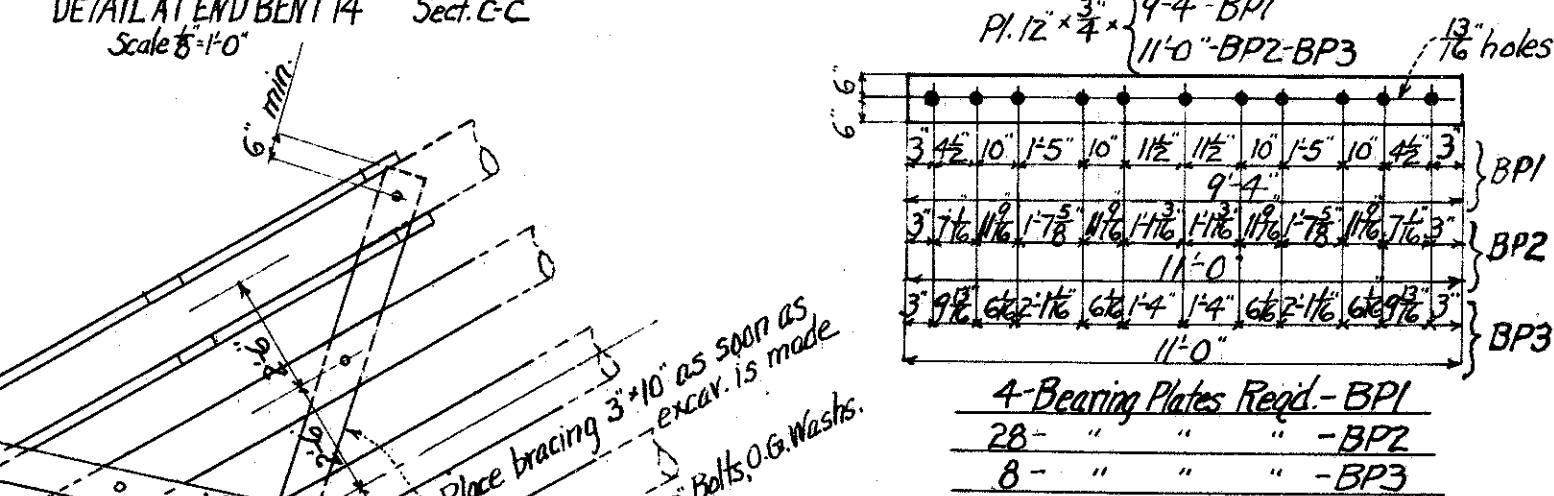
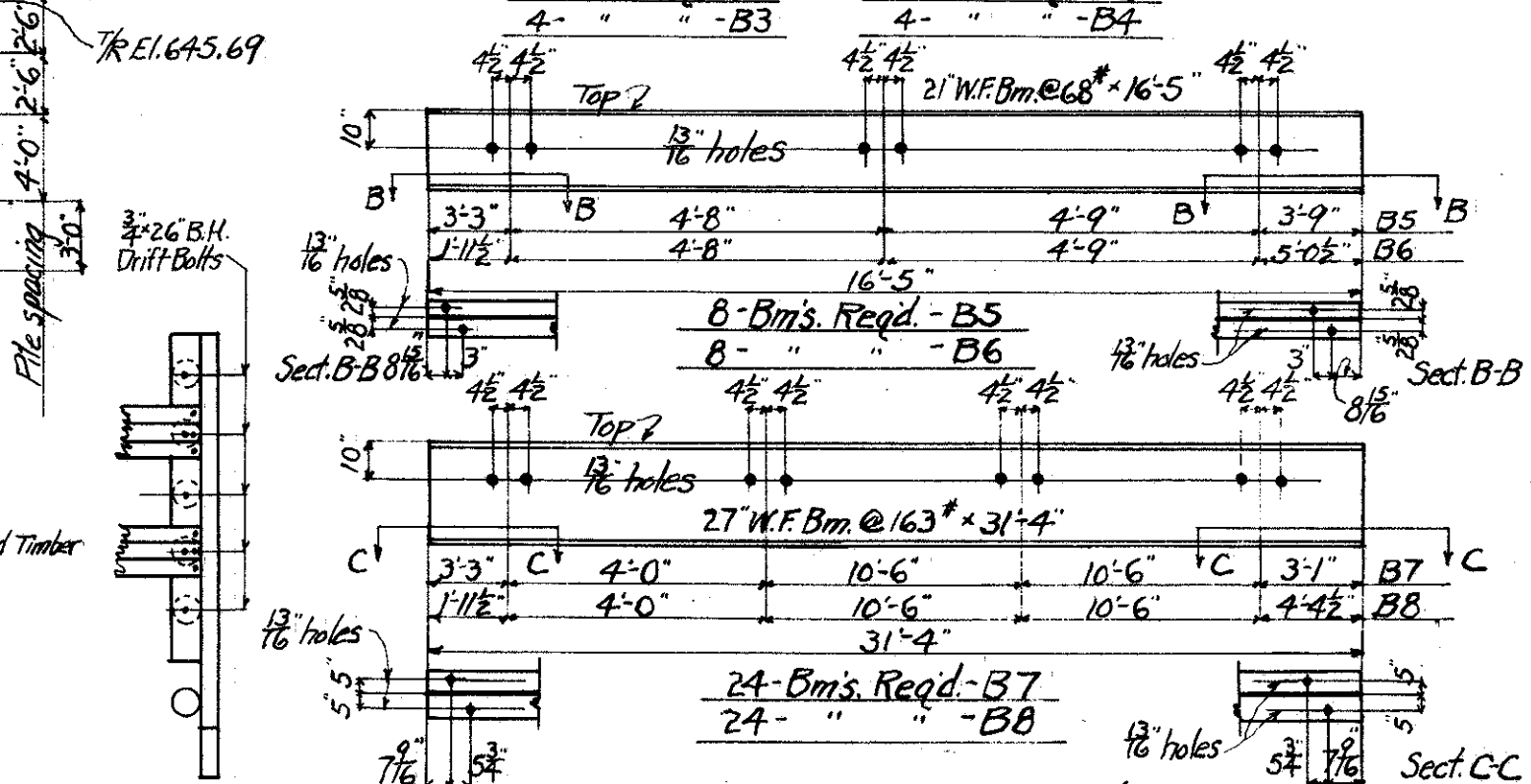
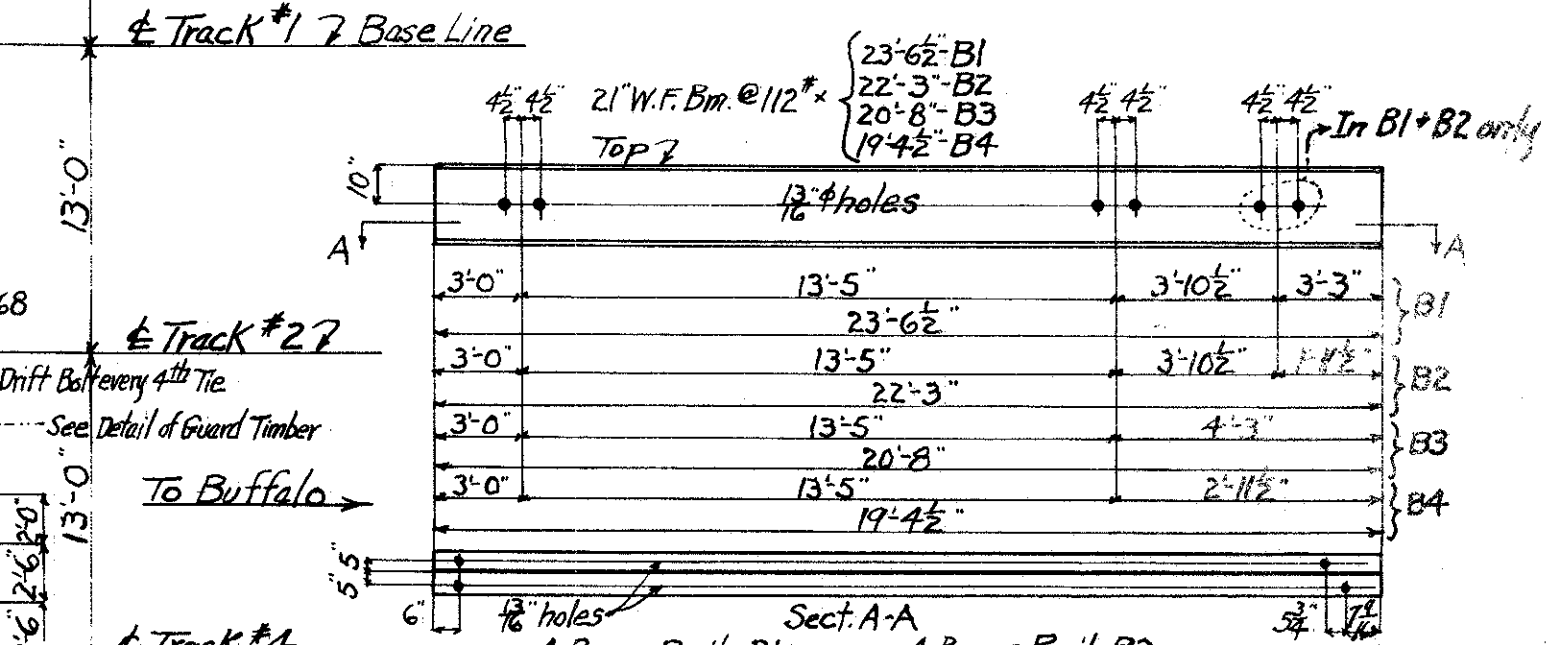
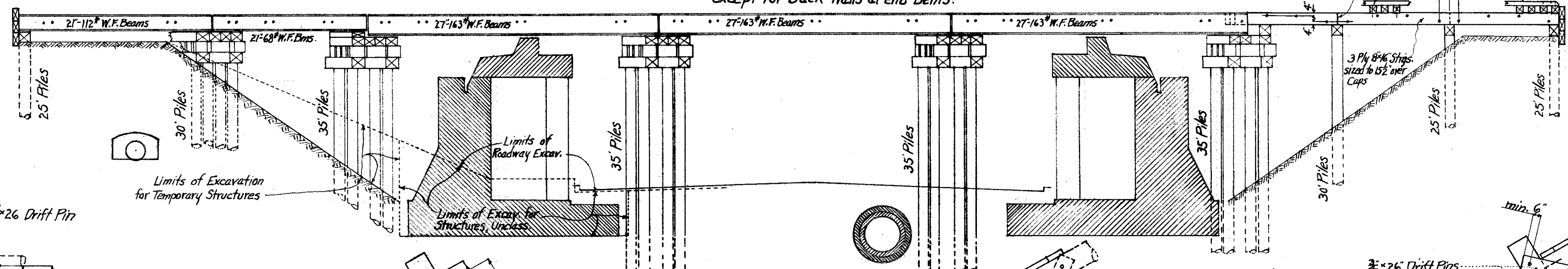


For location plan see sheet 15 of 19 (43)



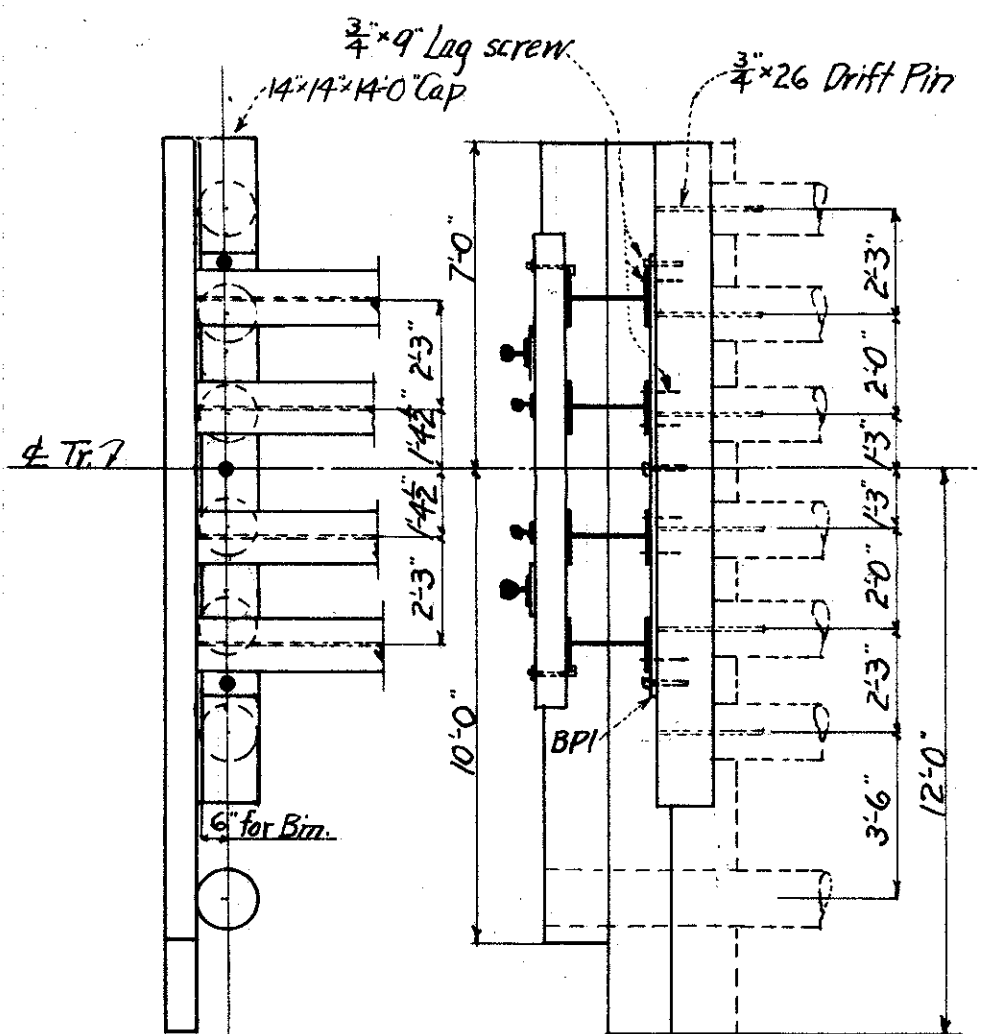
**PLAN**  
Scale 8"=1'-0"  
Temporary Bridges for Tracks #1, #2, #3 and #4  
except for Back Walls at end Bents.



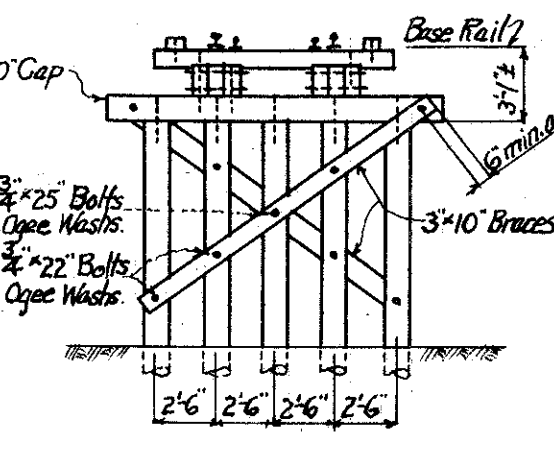
**SECTION ALONG TRACK #4**  
Same for Tr. 1, 2 and 3  
Scale 8"=1'-0"

**DETAIL AT BANK BENTS 14**  
Scale 4"=1'-0"

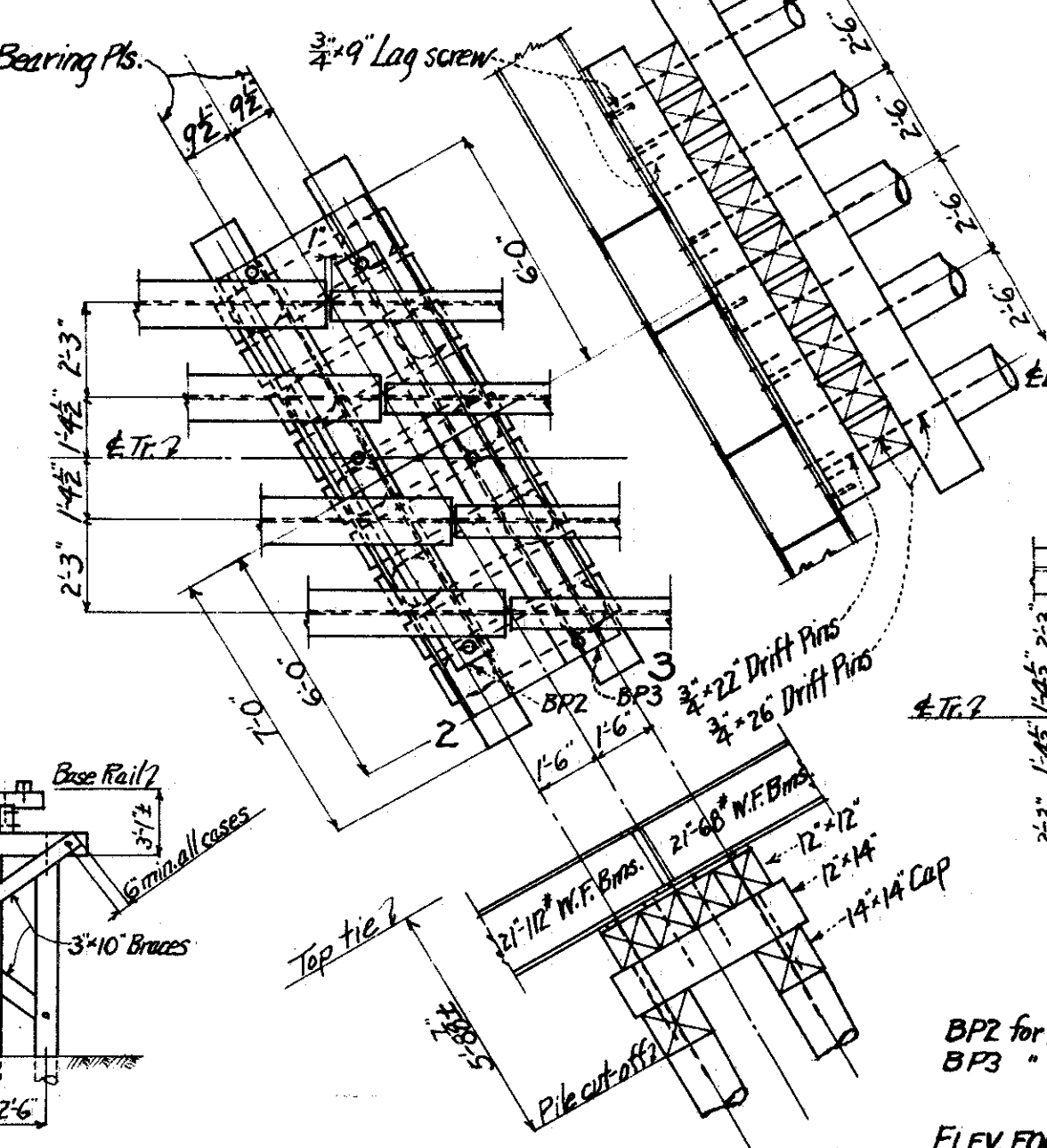
**DETAIL AT END BENT 14**  
Scale 8"=1'-0"



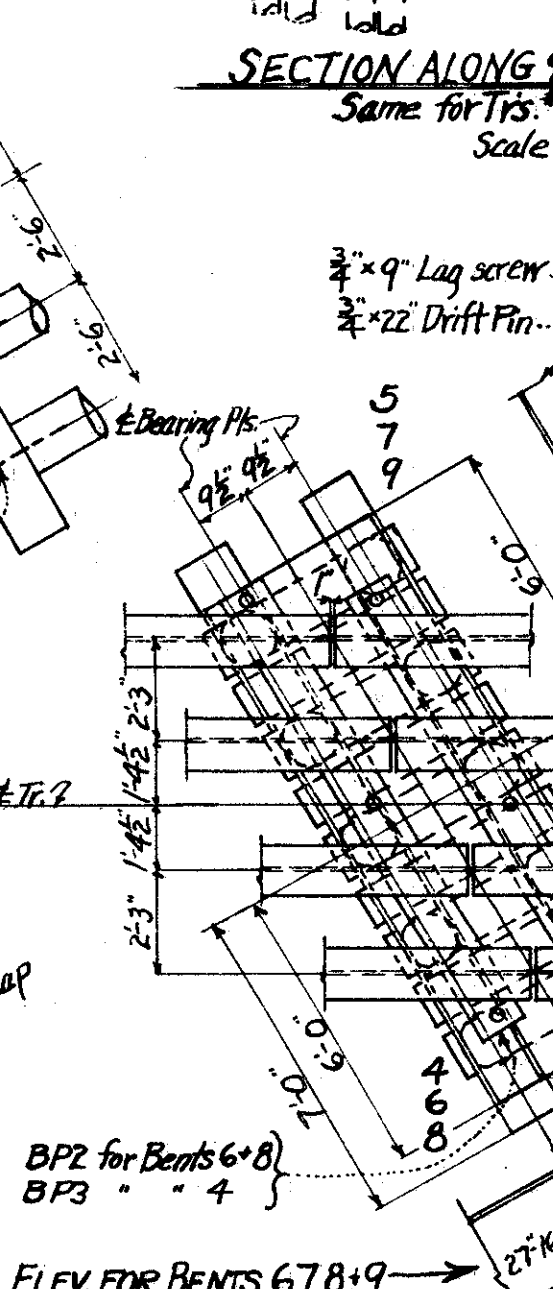
**DETAIL OF BENT #1**  
Scale 4"=1'-0"



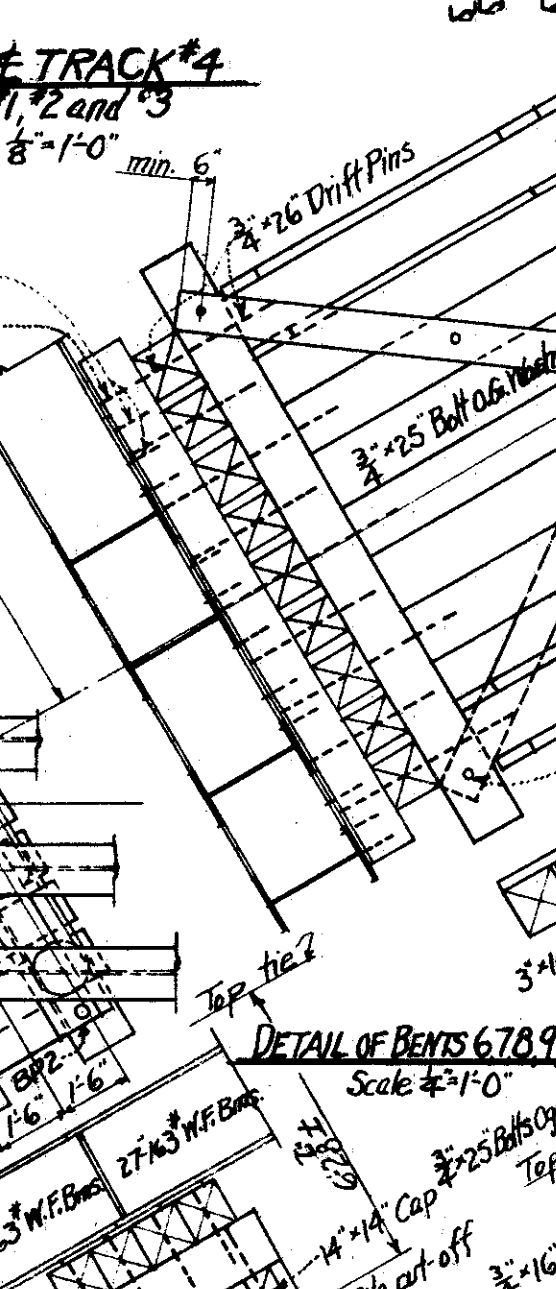
**ELEVATION AT BENT 12**  
Scale 8"=1'-0"



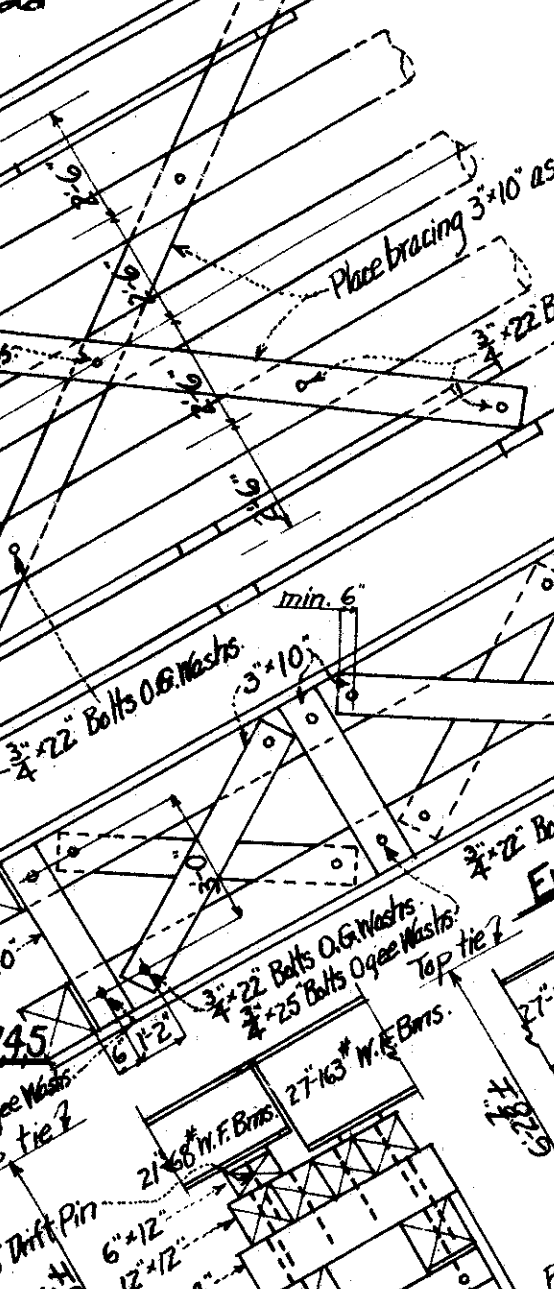
**DETAIL OF BENTS #2 & #3**  
Scale 4"=1'-0"



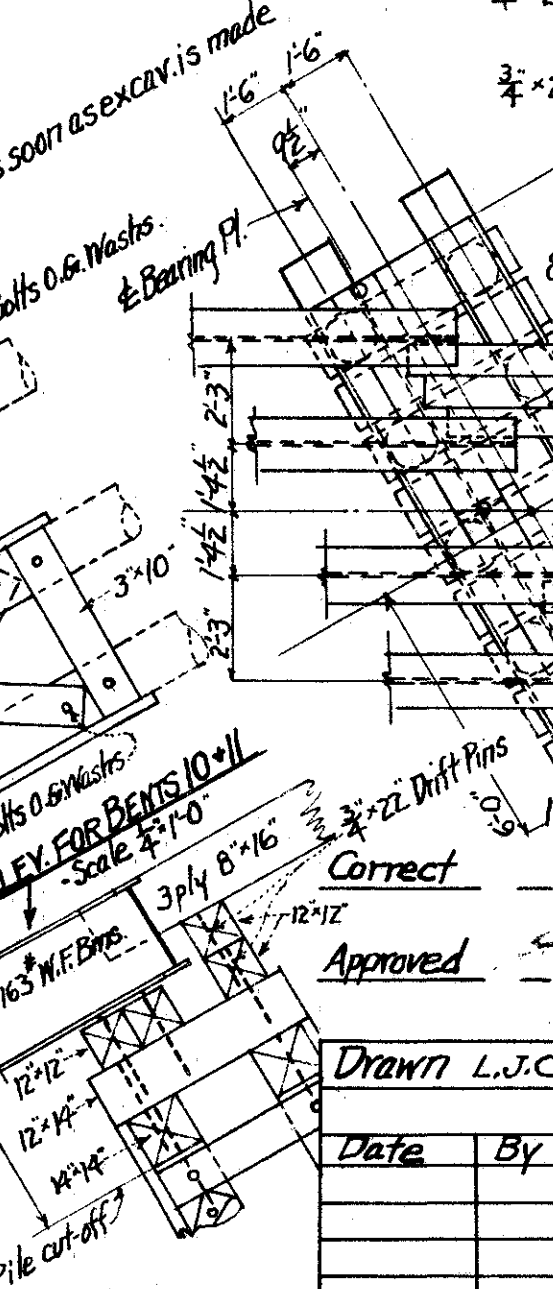
**ELEV. FOR BENTS #6, 7, 8 & #9**  
Scale 4"=1'-0"



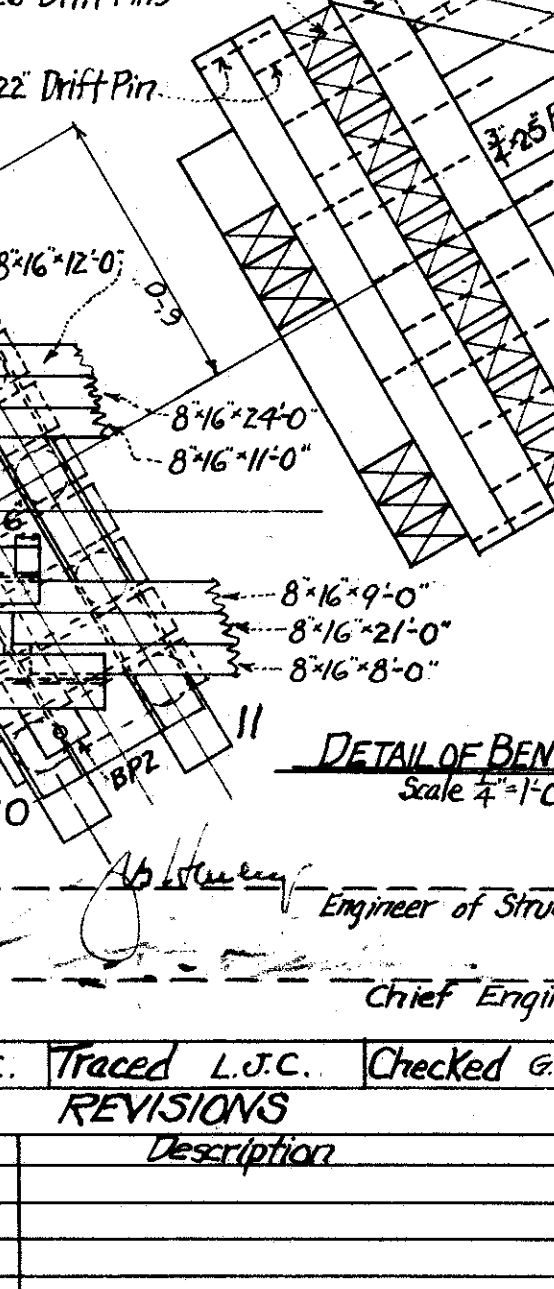
**ELEV. FOR BENTS #4 & #5**  
Scale 4"=1'-0"



**DETAIL OF BENTS #6, 7, 8 & #9**  
Scale 4"=1'-0"



**ELEV. FOR BENTS #10 & #11**  
Scale 4"=1'-0"



**DETAIL OF BENTS #10 & #11**  
Scale 4"=1'-0"

BR. No. LA-283-170  
N.Y.C. System Office of Chief Engineer Chicago, Ill.  
BR. No. 100 3/4 ERIE DIVISION STA. 1481+76.1  
GRADE SEPARATION  
RICHMOND ST. PAINESVILLE, OHIO.  
PLAN OF TEMPORARY BRIDGES  
Sheet 13 of 19  
N.Y.C.R.R. West, Erie Division Plan No. 1090  
Scales as shown July 5, 1940 Val. Sec. 203 File No. 100-91

Date	By	Description

Drawn L.J.C. Traced L.J.C. Checked G.F.B.  
REVISIONS

Approved: Chief Engineer  
Correct: Engineer of Structures