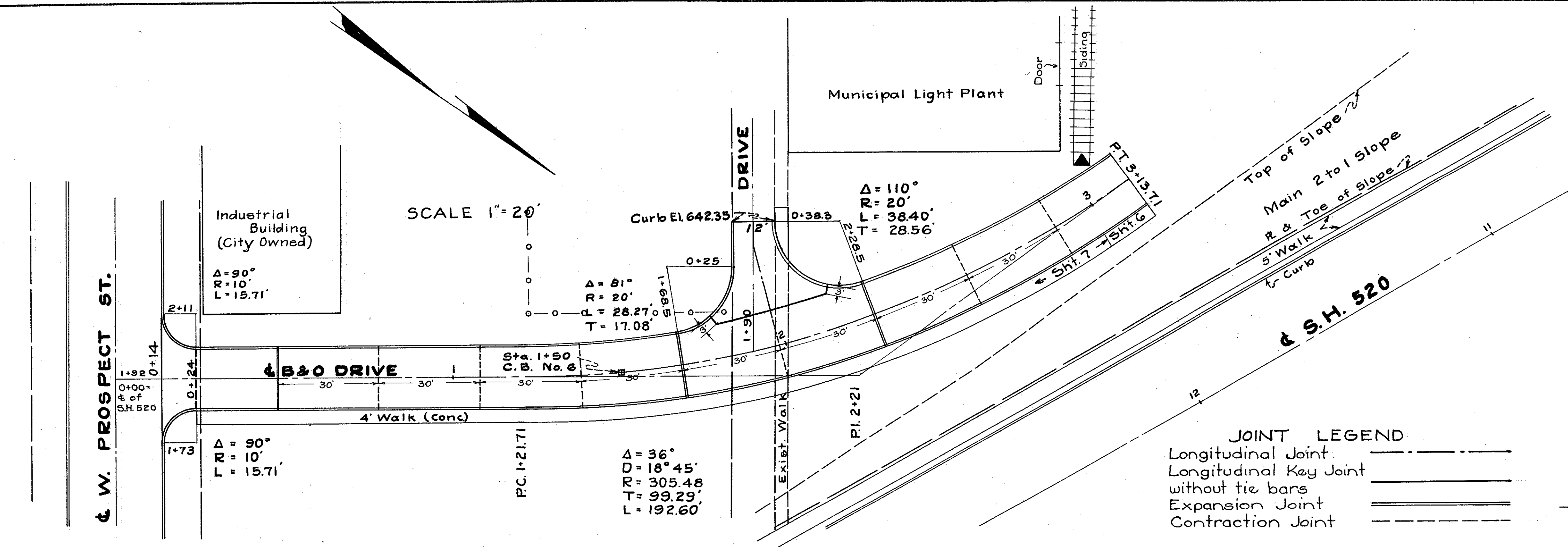
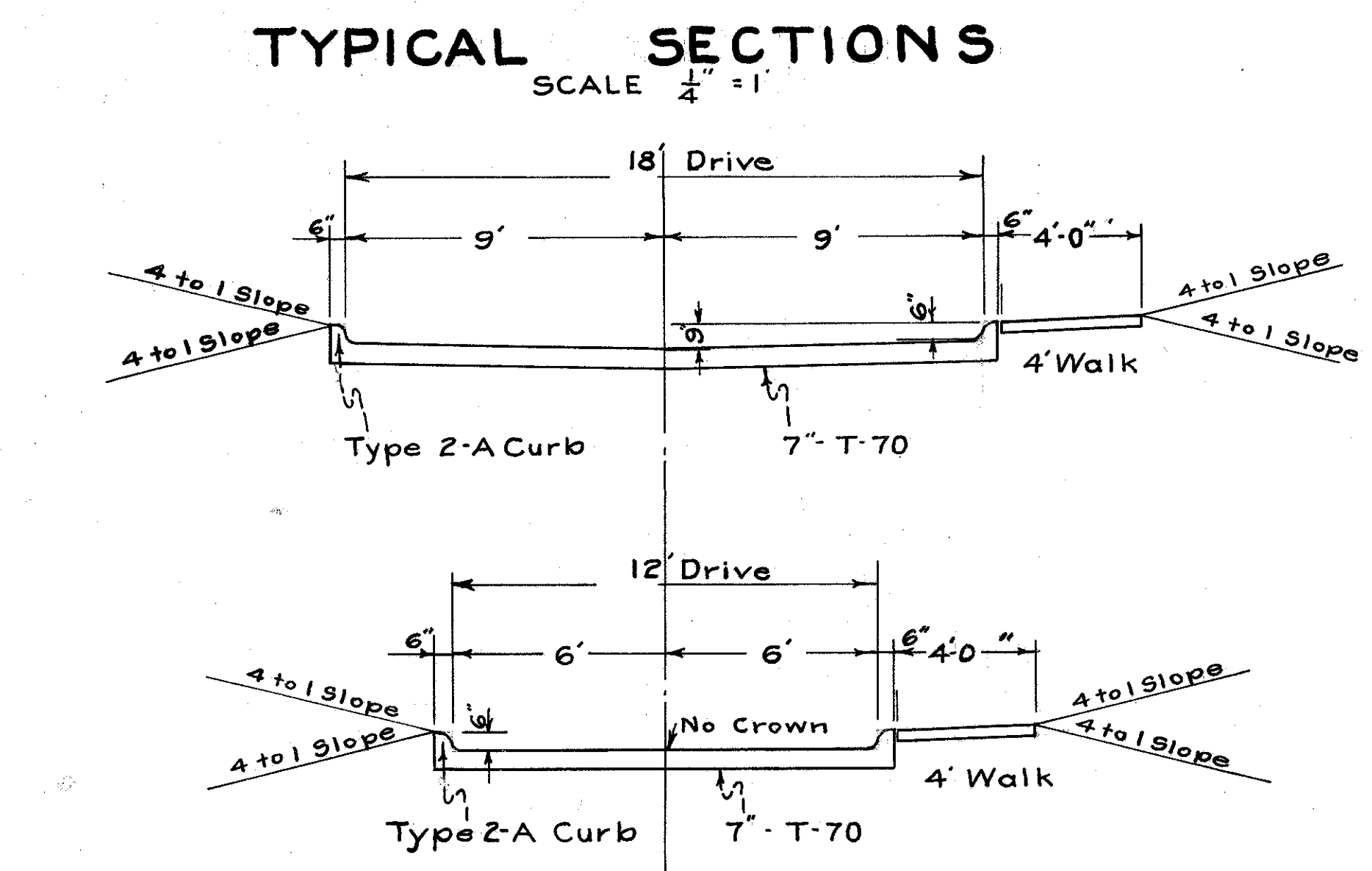


LAKE COUNTY
S.H. 520 SEC. PAINESVILLE (PT)
GRADE SEPARATION



STATION	CURB ELEV.	TOP OF CURB	EXIST. G. PROFILE	GRADE
0	642.5	642.4	642.4	-0.80%
+4	642.4	642.6	642.6	
1	642.4	642.4	642.4	
2	642.1	642.1	642.1	+0.30%
+80	642.2	642.2	642.2	
3	644.0	644.0	644.0	
+13.71	642.5	642.5	642.5	



QUANTITIES

T-70 - 7" Portland Cement Concrete Pavement (0+14 to 3+13.71) = 299.71 x 19 =	5634.59 S.F.
Return at W. Prospect St. =	5.4 S.F.
Driveway - Sta. 1+90 Lt. =	66.9 S.F.
Total =	705.8 S.F.
I-13 - 4" Concrete Sidewalk (0+24 to 3+13.71) Rt. = 296.94 x 4 =	1187.76 S.F.
Sta. 1+99 Lt. =	48 S.F.
Total =	1235.76 S.F.
E-8 Removal and disposal of Existing Sidewalk	384 S.F.
E-1 Roadway Excavation	353 C.Y.
Embankment	9 C.Y.
I-8 C.B. No. 6	1 Ea.
12" Pipe Storm Sewer Under Pavement	10 L.F.
E-8 Removal and disposal of Exist. Curb	38 L.F.
I-12 Type 2-A Concrete Curb	644.11 L.F.

Note: Where sidewalk is adjacent to curb, it shall be separated from the curb by 1/4" premolded expansion joint material full depth of sidewalk. The cost of same shall be included in the unit price bid per sq. ft. of sidewalk, item I-13.

STATION	END AREA		CU. YDS.	
	CUT	FILL	EXC.	EMB.
22	0	0	24	0
72	0	0	35	1
22	3	0	24	3
22	2	0	42	2
24	0	0	23	0
			54	0
34	0	0	61	0
32	0	0	49	2
21	2	0	41	1
40	0	0		
Total			353	9