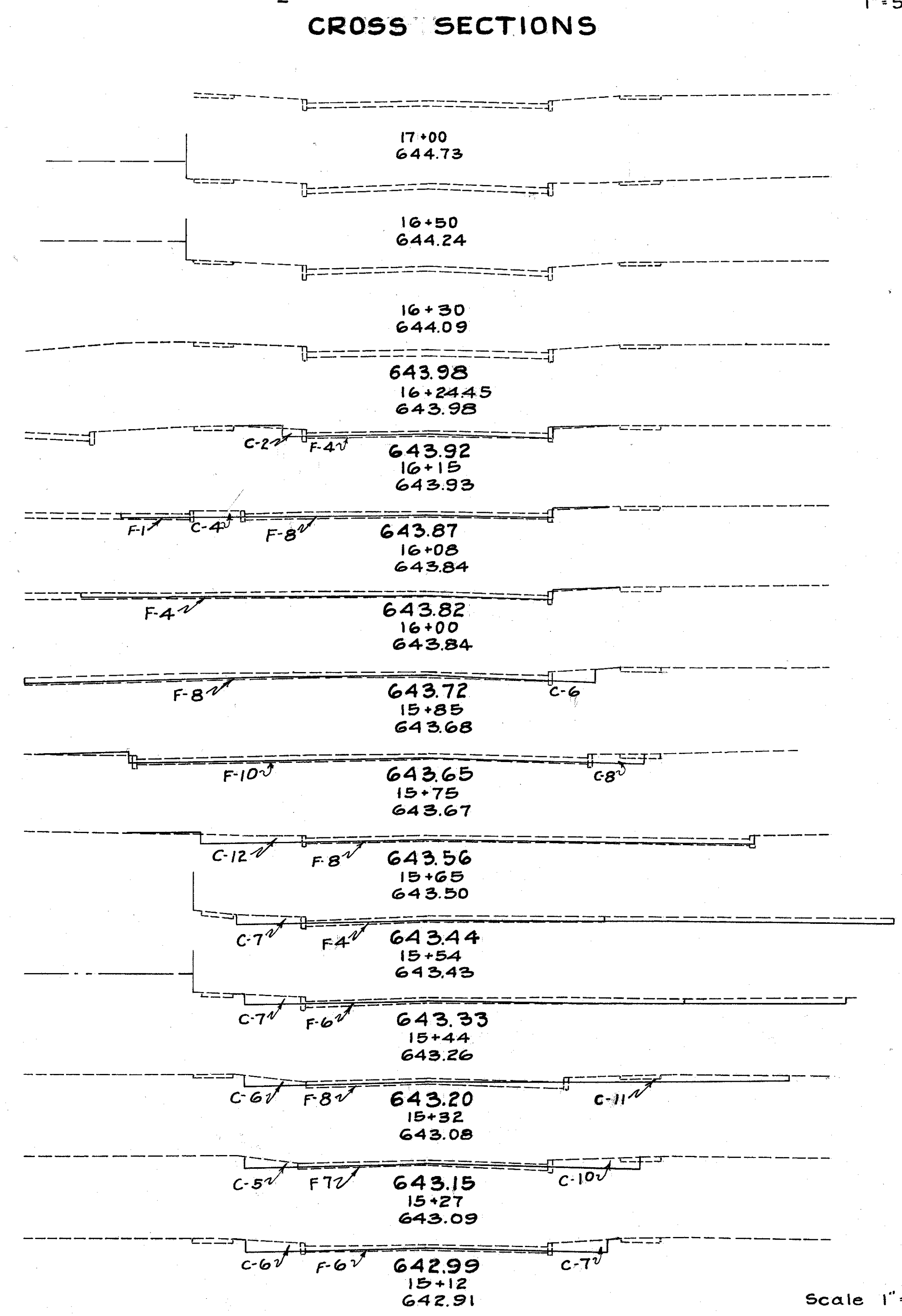
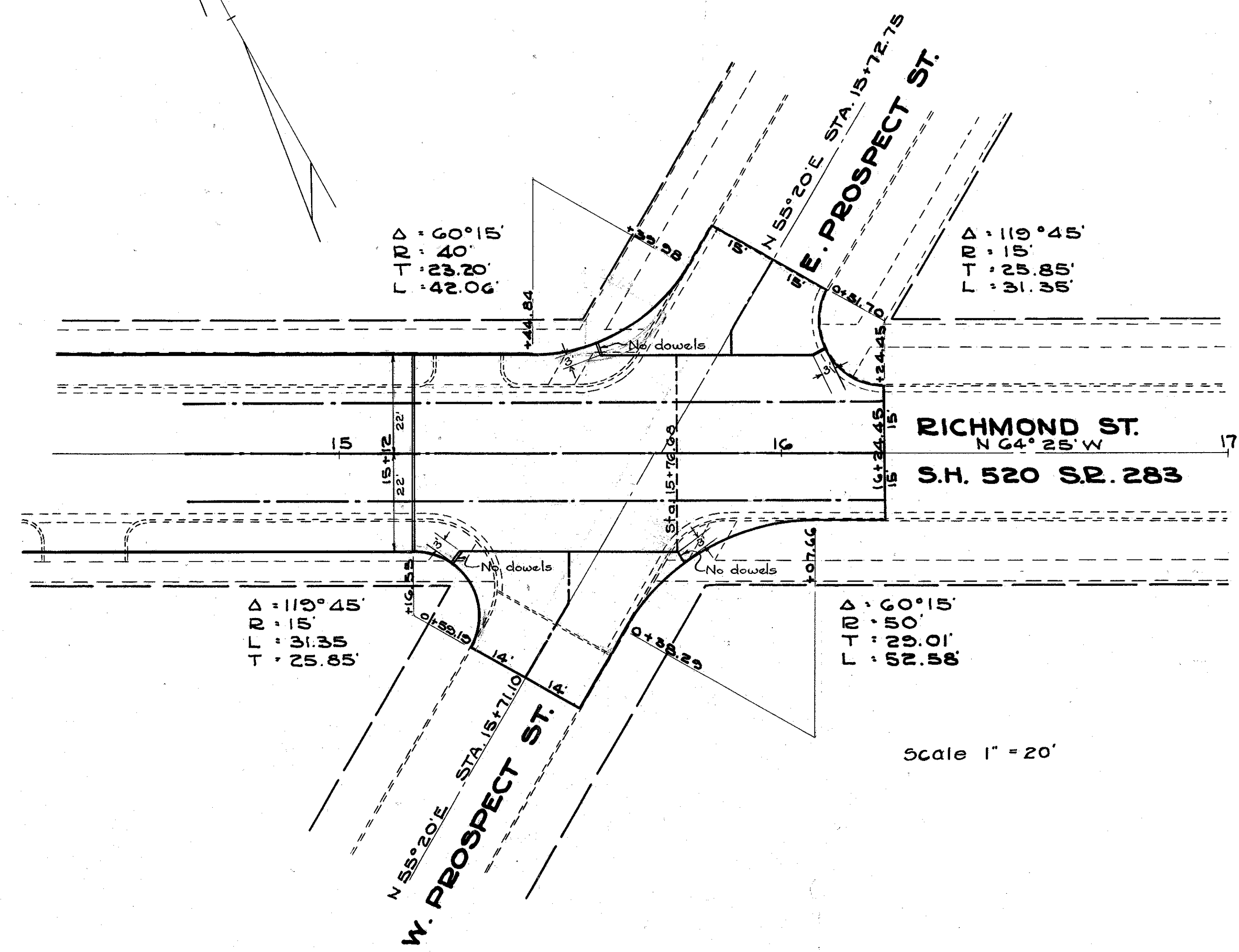
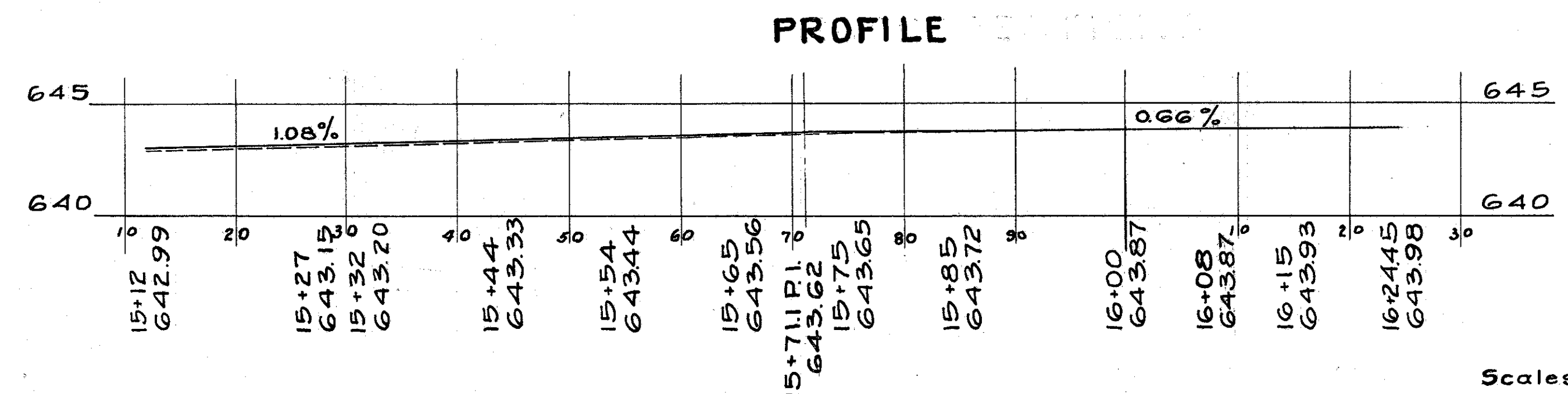
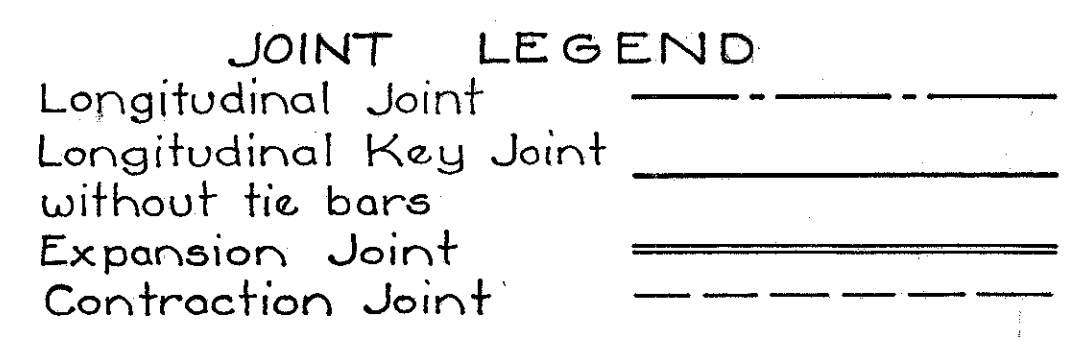


LAKE COUNTY
S.H. 520 SEC. PAINESVILLE (Pt)
GRADE SEPARATION



QUANTITIES

T-71	7" Reinforced Portland Cement Concrete Pavement	= 758.3 S.Y.
	Type 2-A Curb	= 244.1 L.F.
	Removal and Disposal of Existing Curb and Gutter	= 238.4 L.F.
	Removal and Storage of Existing Wearing Course	= 560.4 S.Y.
	Removal and Disposal of Existing 5" Concrete Base	= 560.4 S.Y.
	Removal and Disposal of Existing Header	= 28 L.F.
	Removal and Disposal of Existing Curb	= 28.6 L.F.

Station	END AREA		CU. YDS.	
	CUT	FILL	EXC.	EMB.
0	0	0	0	1
2	4		1	2
4	9		1	2
0	4		2	3
6	8		3	3
8	10		4	3
12	8		4	2
7	4		3	2
7	6		5	3
17	8		3	2
15	7		8	4
13	6			
Total			34	27