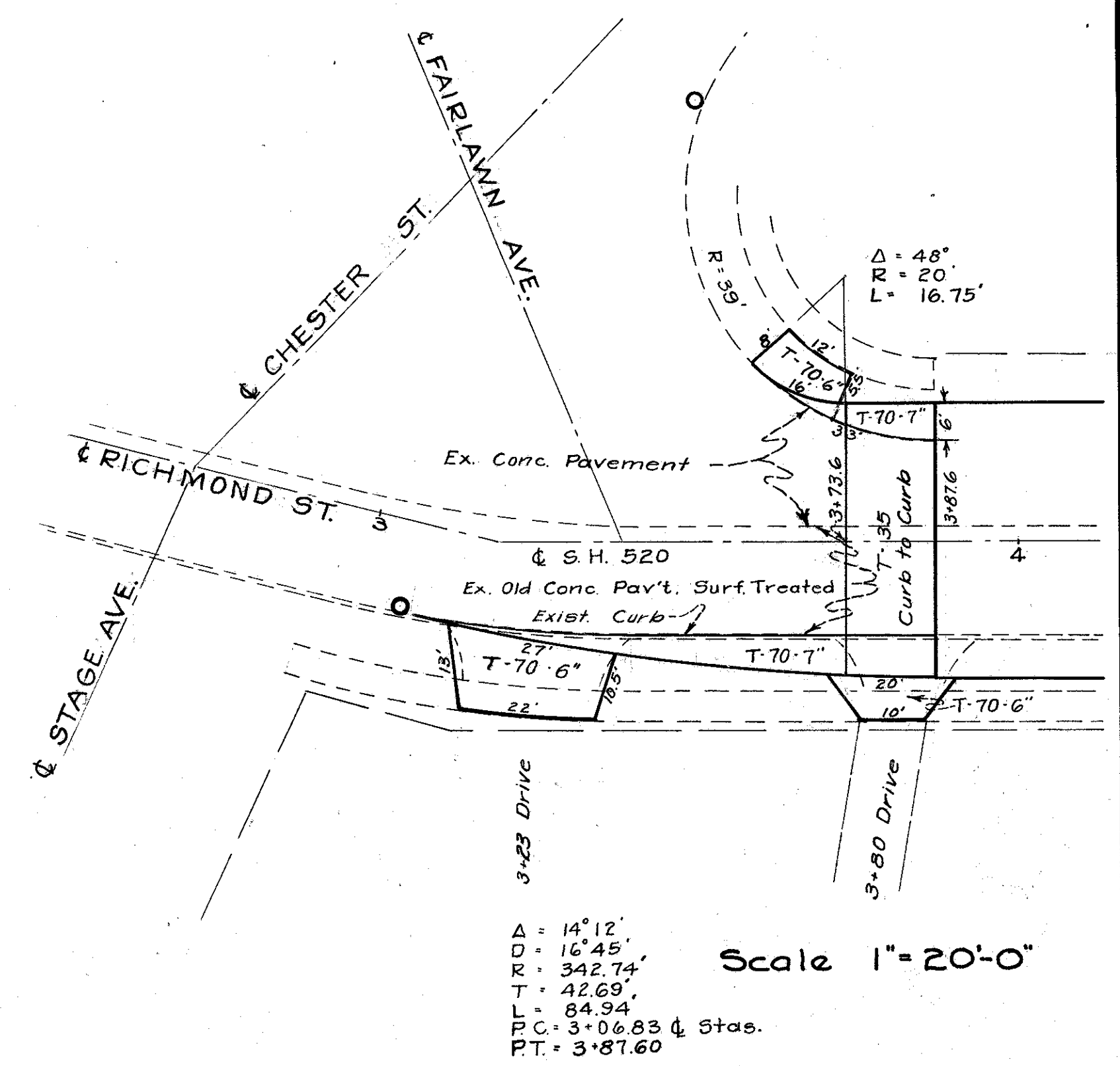


LAKE COUNTY  
S.H. 520 SEC. PAINESVILLE (PT)  
GRADE SEPARATION



**APPROACH - STA. 3+06.83 TO 3+87.6**

| Item                              | Est. | Lt.   | Rt.  | Total  | Unit |
|-----------------------------------|------|-------|------|--------|------|
| T-70 (7')                         |      | 8.6   | 57.9 | 66.5   | SY   |
| Type 2-A Curb                     |      | 30.75 | 85   | 115.75 | L.F. |
| Removal & Disposal of Exist. Curb |      | 35    | 82   | 115    | L.F. |
| T-35 (14x44x0.12+27)              |      |       |      | 2.74   | C.Y. |

**SPEC. DRIVE-RT.-STA. 3+23**

QUANTITIES

|   |      |      |
|---|------|------|
| T-70-6" Portland Cement Concrete Pavement | 31.8 | S.Y. |
|---|------|------|

**SPEC. DRIVE-LT.-STA. 3+66**

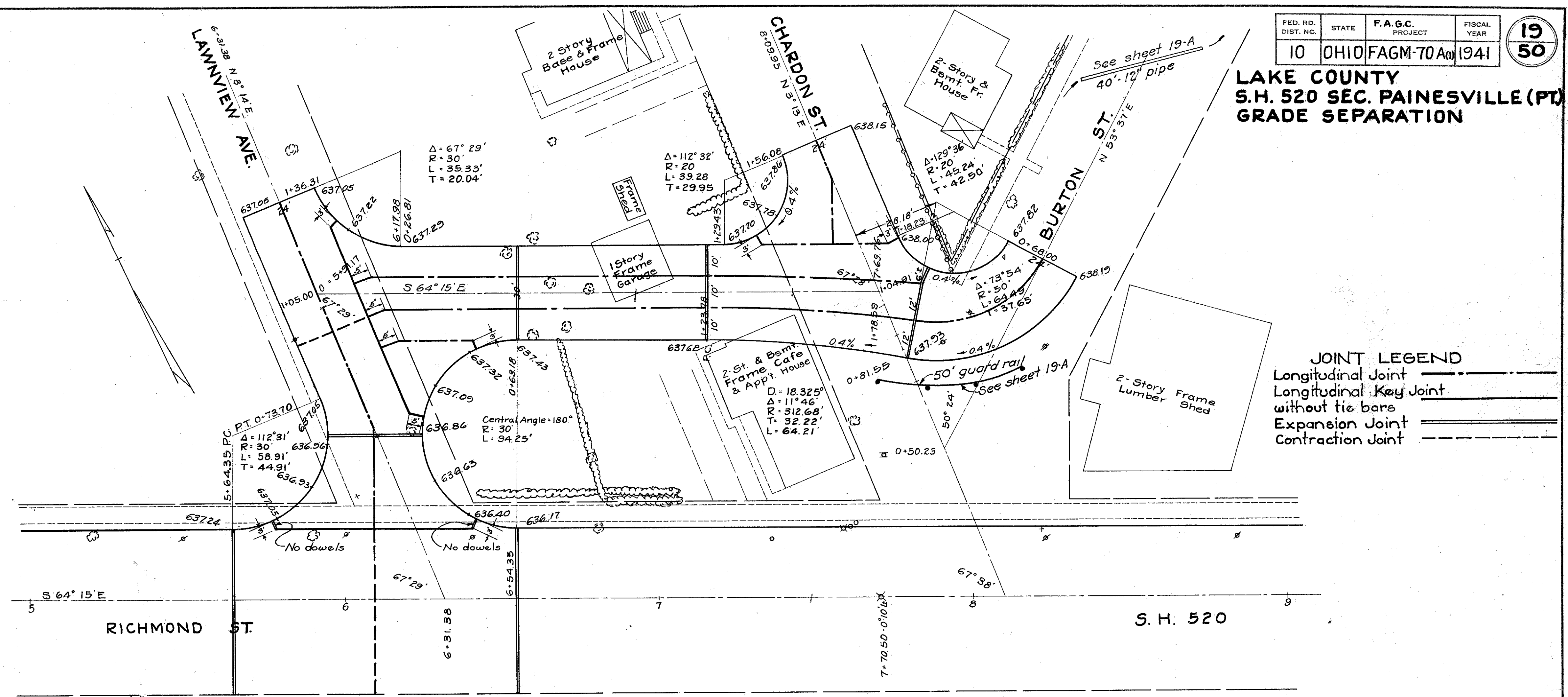
|   |      |      |
|---|------|------|
| Removal and Disposal of Existing Pavement | 13.2 | S.Y. |
| T-70-6" Portland Cement Concrete Pavement | 11.8 | S.Y. |

**SPEC. DRIVE-RT.-STA. 3+80**

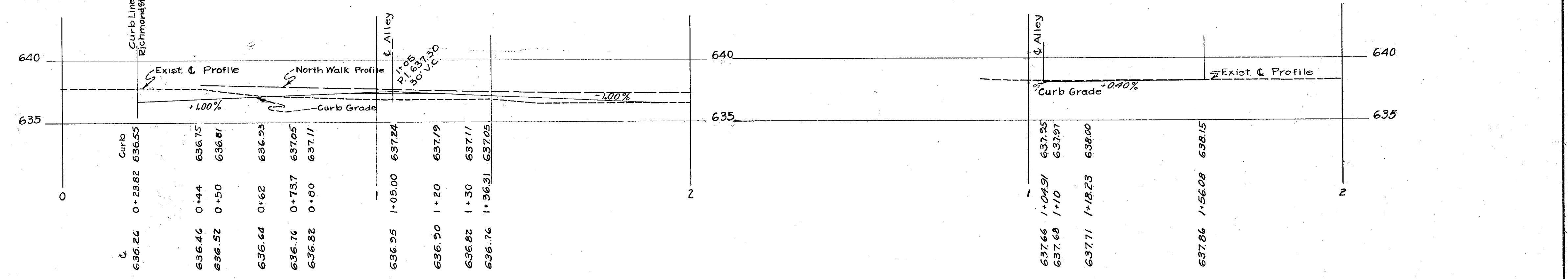
|   |      |      |
|---|------|------|
| Removal and Disposal of Existing Pavement | 16.1 | S.Y. |
| T-70-6" Portland Cement Concrete Pavement | 10.9 | S.Y. |

**STD. DRIVE-LT.-STA. 5+09**

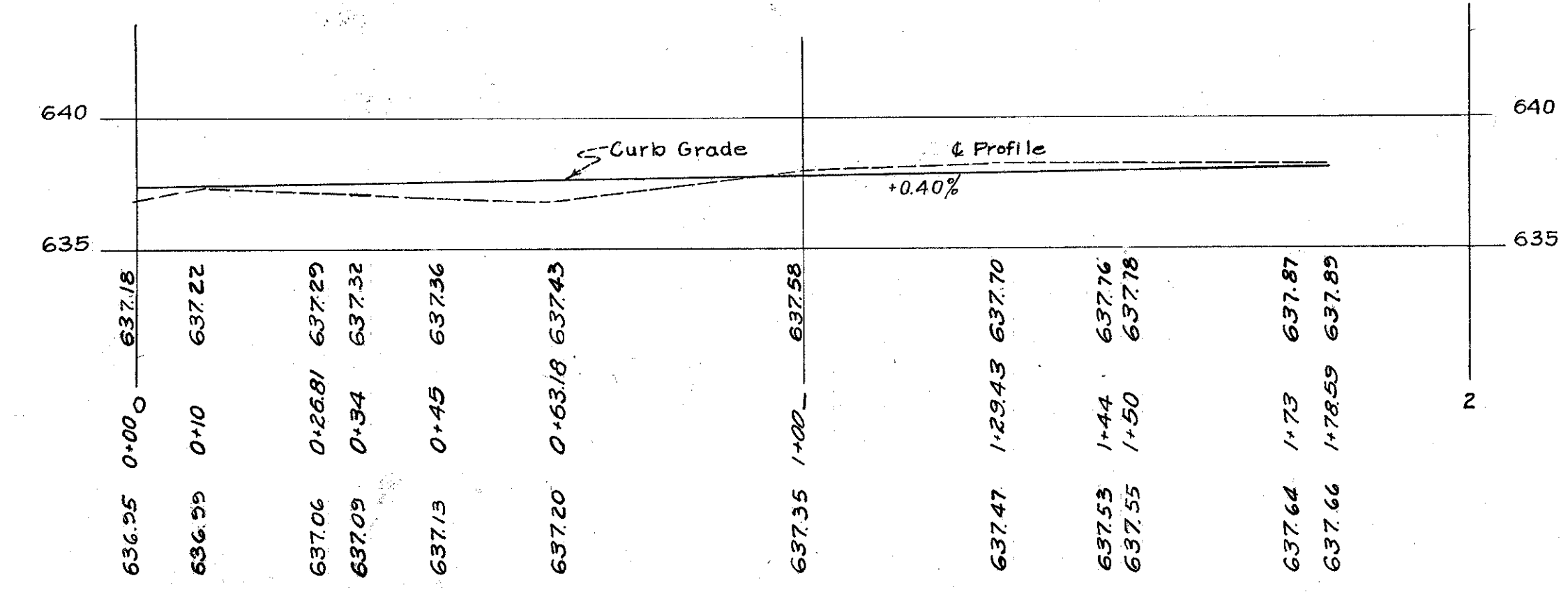
|   |       |      |
|---|-------|------|
| T-70-6" Portland Cement Concrete Pavement | 10.83 | S.Y. |
|---|-------|------|



**JOINT LEGEND**  
 Longitudinal Joint  
 Longitudinal Key Joint  
 without tie bars  
 Expansion Joint  
 Contraction Joint



**PROFILE-LAWNVIEW AVENUE**



**PROFILE-ALLEY-LAWNVIEW AVE. TO CHARDON ST.**

**PROFILE-CHARDON ST.-BURTON ST. APPROACH**

SEE SHEET NO. 2&3 FOR TYPICAL SECTIONS

Plan Scale 1"=20'-0"

QUANTITIES

|      |  |           |      |
|------|--|-----------|------|
| T-71 | 7" Reinforced Portland Cement Concrete Pavt. | = 1317.42 | S.Y. |
| I-12 | Type 2-A Concrete Curb                       | = 665.39  | L.F. |
| E-1  | Roadway Excavation *                         | 478       | C.Y. |
|      | Embankment                                   | 12        | C.Y. |

\* See sheet 19-A for additional quantities on Burton Street.

SEE SHEET NO. 20 FOR  
CROSS SECTIONS