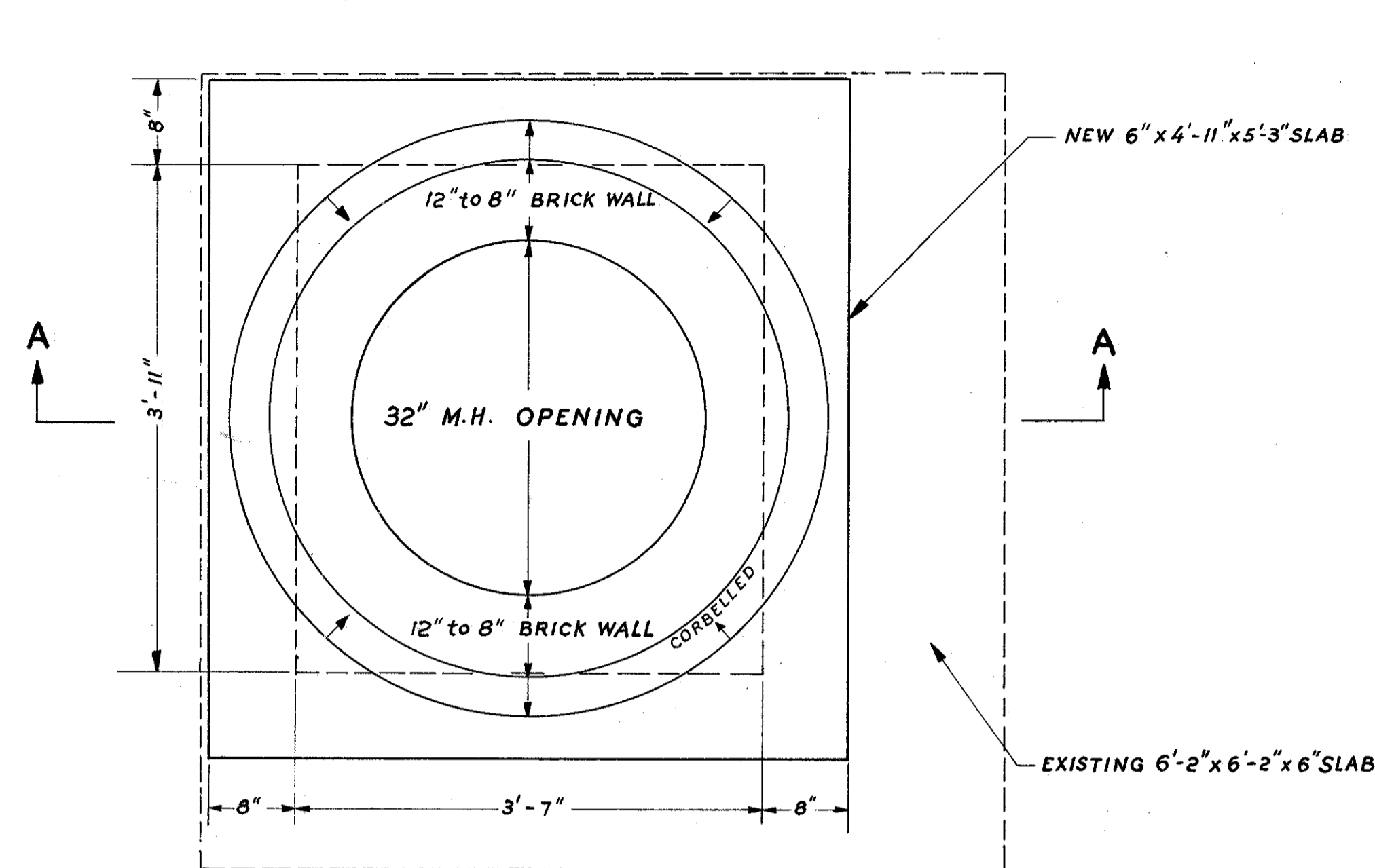


MODIFICATION No. 3 OF ELECTRIC MANHOLE & VAULT STATION 7+35 LEFT

FED. RD. DIVISION	STATE	PROJECT	
2	OHIO		

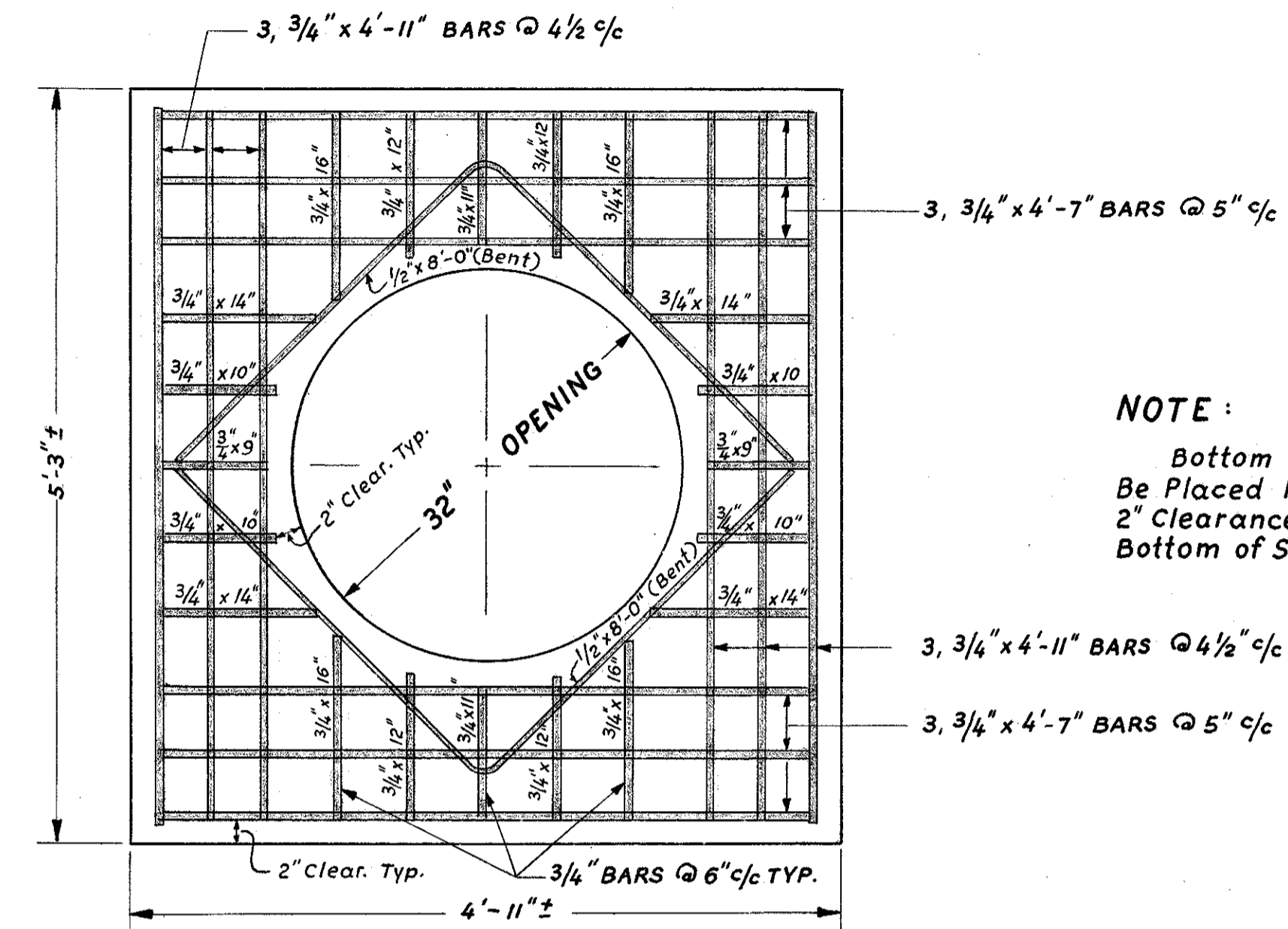
20
34

LAKE COUNTY
LAK - 283-16.85



PLAN VIEW

SCALE: 1" = 1'-0"

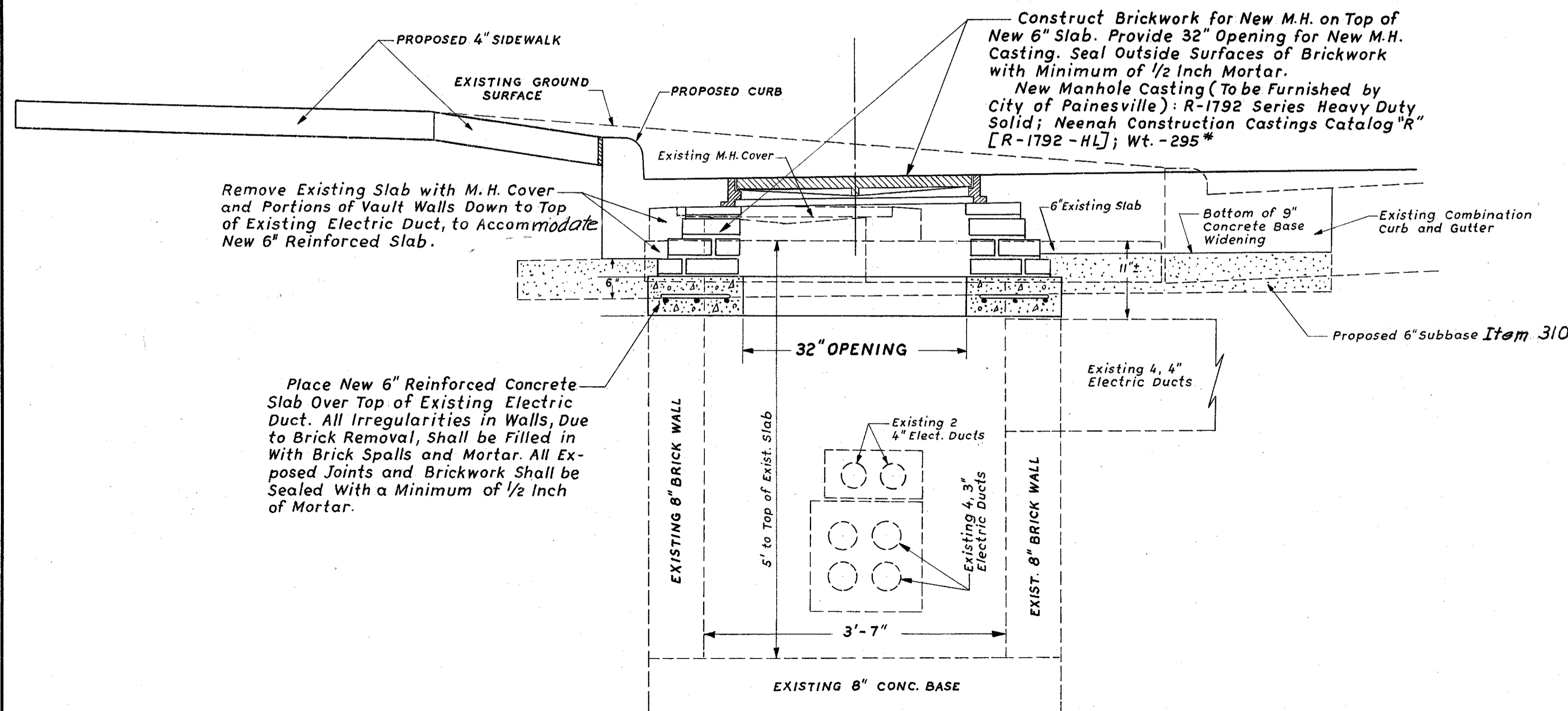


**DETAIL OF REINFORCING STEEL
6" x 4'-11" x 5'-3" SLAB**

SCALE: 1" = 1'-0"

NOTE:

Bottom Reinforcing Bars to Be Placed Parallel to $\frac{1}{2}$ of Road 2" Clearance Between Steel & Bottom of Slab.



SECTION A-A

SCALE: 1" = 1'-0"

ITEM-604 SPECIAL - MODIFICATION OF ELECTRIC M.H. & VAULT	
STATION	NUMBER
7+35 LT.	1 EA.
TOTAL = 1 EA.	

NOTE:

Cost of removal of portions of existing slab and vault walls, reinforcing steel & concrete slab, brick masonry, placing all castings except the furnishing there-of, formwork and curing of concrete slab and all other materials and incidentals, labor and equipment etc., necessary to complete this item, shall be included under payment for each Item, Special Modification of Electric Manhole and Vault.

Reinforcing steel to be placed in accordance with Item - 509.

Concrete for vault slab shall be placed and cured in accordance with Item - 511.

NOTE:

If the contractor so elects, the 6" reinforced concrete slab may be separately pre-cast near the job site, to allow inspection, then placed over the electric vault, provided the outer dimensions for the slab are pre-determined by the contractor to fit the electric vault and the slab has been properly cured for not less than 7 days.