

EXTRA AREA DETAILS

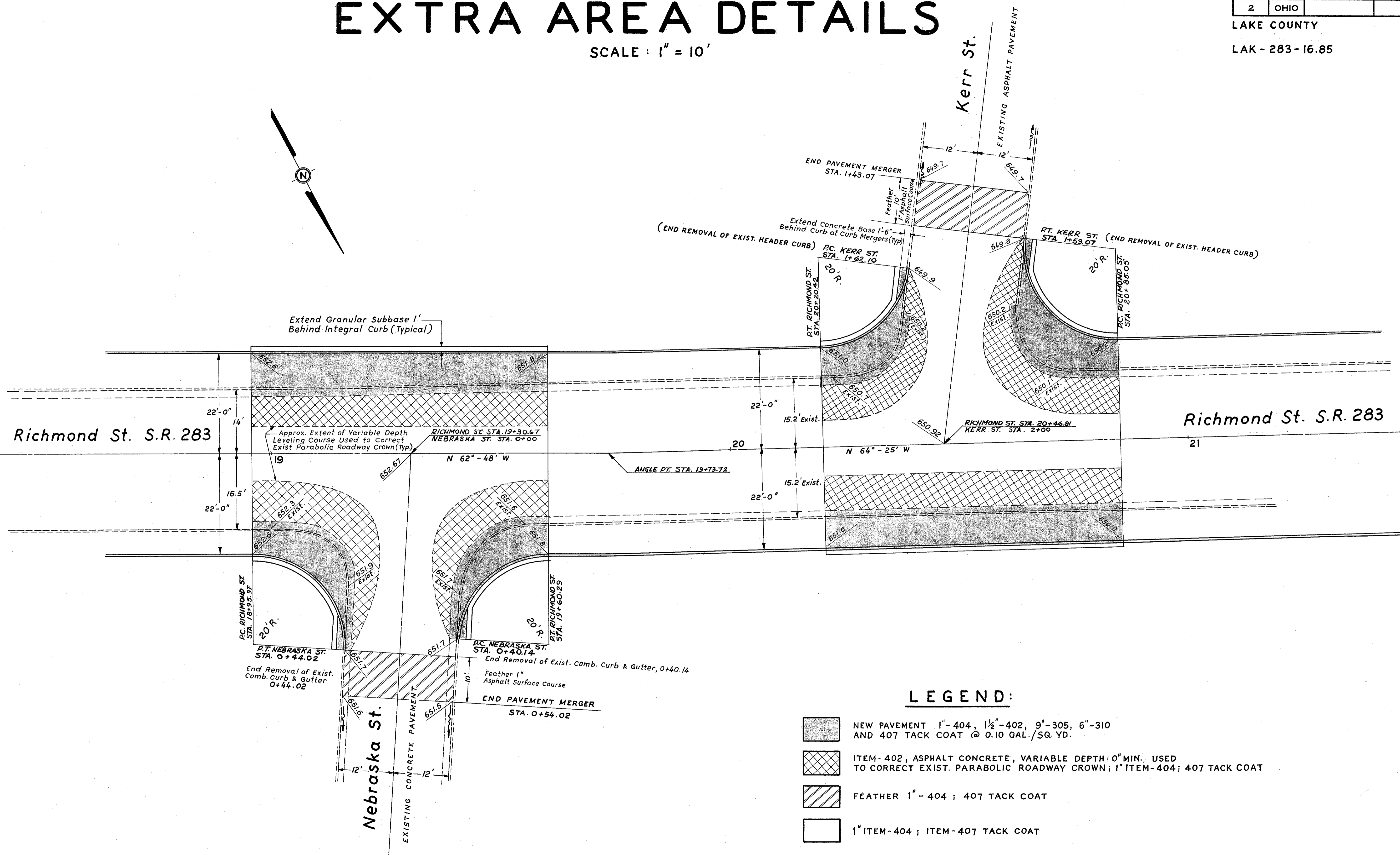
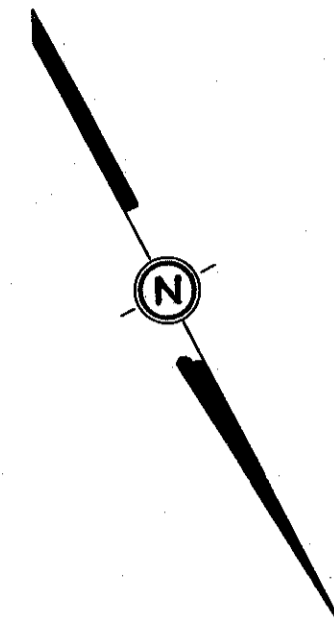
SCALE : 1" = 10'

FED. RD. DIVISION	STATE	PROJECT
2	OHIO	

15
34

LAKE COUNTY

LAK - 283 - 16.85



LEGEND:

- NEW PAVEMENT 1"-404, 1½"-402, 9"-305, 6"-310 AND 407 TACK COAT @ 0.10 GAL./SQ. YD.
- ITEM-402, ASPHALT CONCRETE, VARIABLE DEPTH (0" MIN.) USED TO CORRECT EXIST. PARABOLIC ROADWAY CROWN; 1" ITEM-404; 407 TACK COAT
- FEATHER 1" - 404 ; 407 TACK COAT
- 1" ITEM-404 ; ITEM-407 TACK COAT