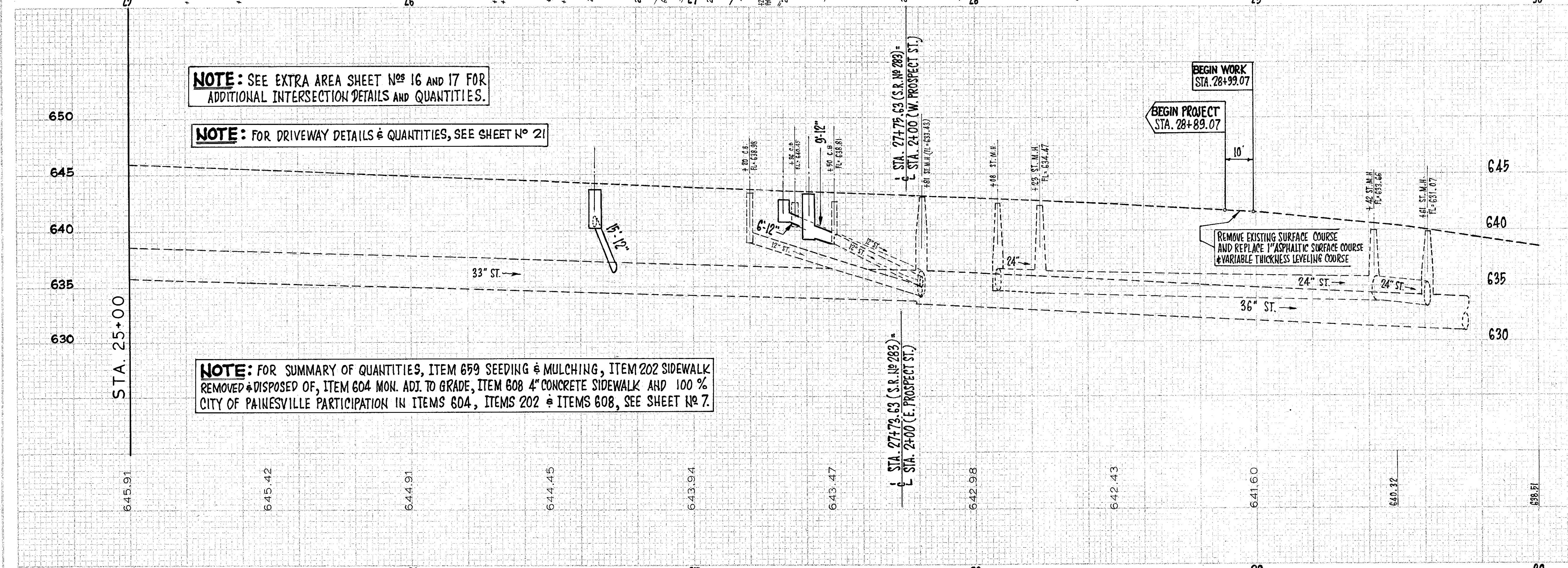
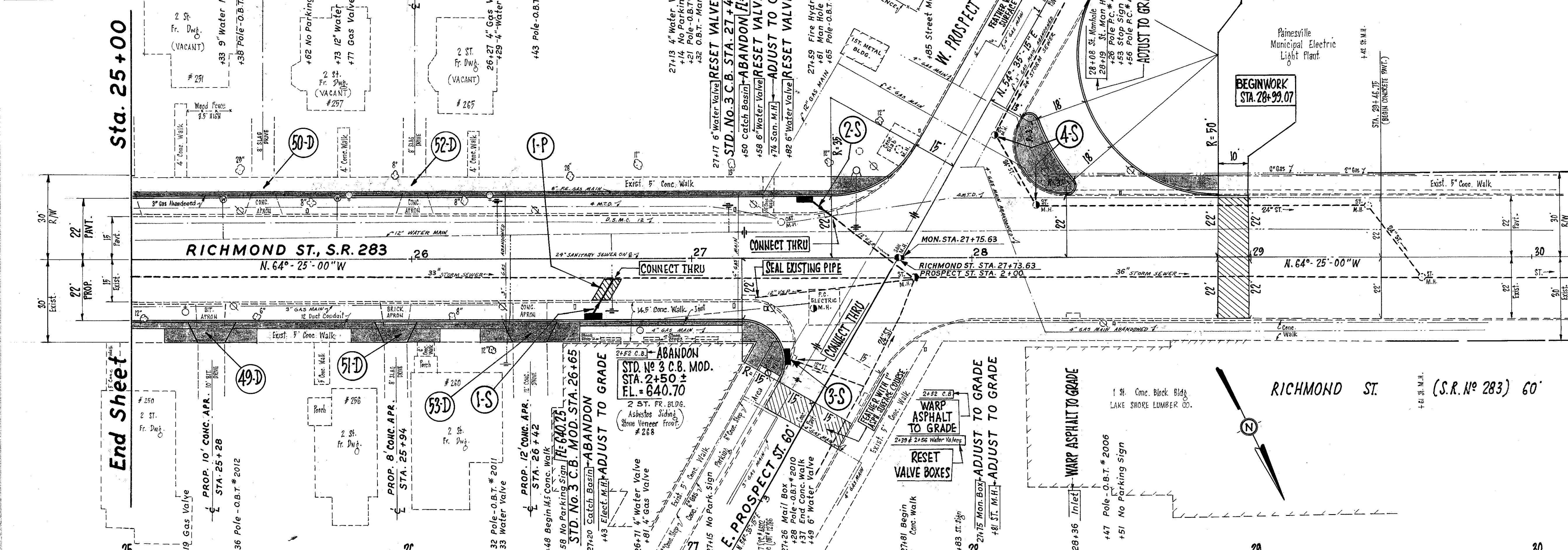


T.P. "X" S.E. Lower Step, House No 247,
Sta. 24+73, S.R.#283 (S1L).
ELEV.-647.91

B.M. "X" ON S.E. COR. C.B., STA. 29+83,
S.R.# 283 (23L).
ELEV.-639.01



NOTE: SEE EXTRA AREA SHEET NOS 16 AND 17 FOR
ADDITIONAL INTERSECTION DETAILS AND QUANTITIES.

NOTE: FOR DRIVEWAY DETAILS & QUANTITIES, SEE SHEET NO 21

NOTE: FOR SUMMARY OF QUANTITIES, ITEM 659 SEEDING & MULCHING, ITEM 202 SIDEWALK
REMOVED & DISPOSED OF, ITEM 604 MON. ADJ. TO GRADE, ITEM 608 4\"/>

PAVEMENT

Ref. No	Station	Side	Item	Quantity	Unit
I-P	26+63	R	ITEM 202 REMOVAL & DISPOSAL OF EXISTING PAVEMENT BASE COURSE	6	SQ. YDS.
	26+63	R	ITEM 309 PORTLAND CEMENT CONCRETE BASE COURSE	6	SQ. YDS.
	26+63	R	ITEM 402 BITUMINOUS TACK COAT @ 0.10 GAL. PER SQ. YD.	0.5	GALS.
	26+63	R	ITEM 407 2 1/2\"/>		

TOTAL 6 6 *0.5 1 1.0

* TO BE LAID IN (2)-1/4\"/>

STORM SEWERS

Ref. No	Station	Side	Item	Quantity	Unit
I-S	26+65	R	ITEM 603 12\"/>		

TOTAL 30 1 2 3

PLAN & PROFILE - RICHMOND ST. (S.R.#283) - STA. 25+00 to STA. 30+00