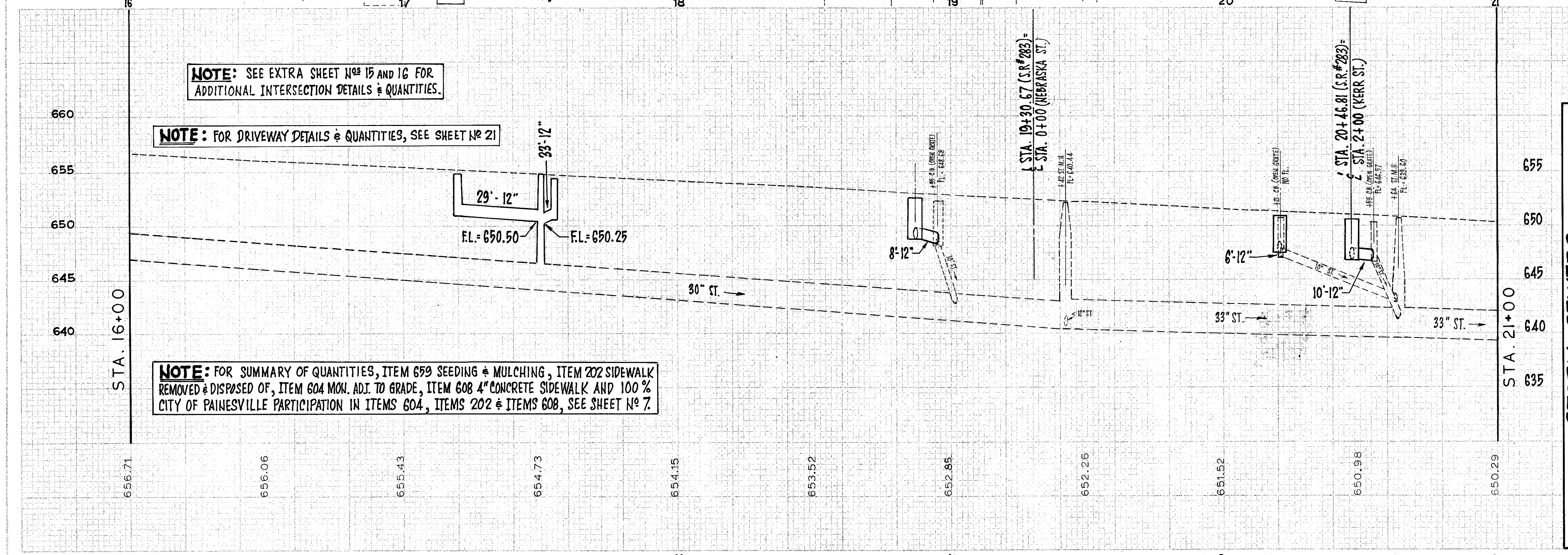
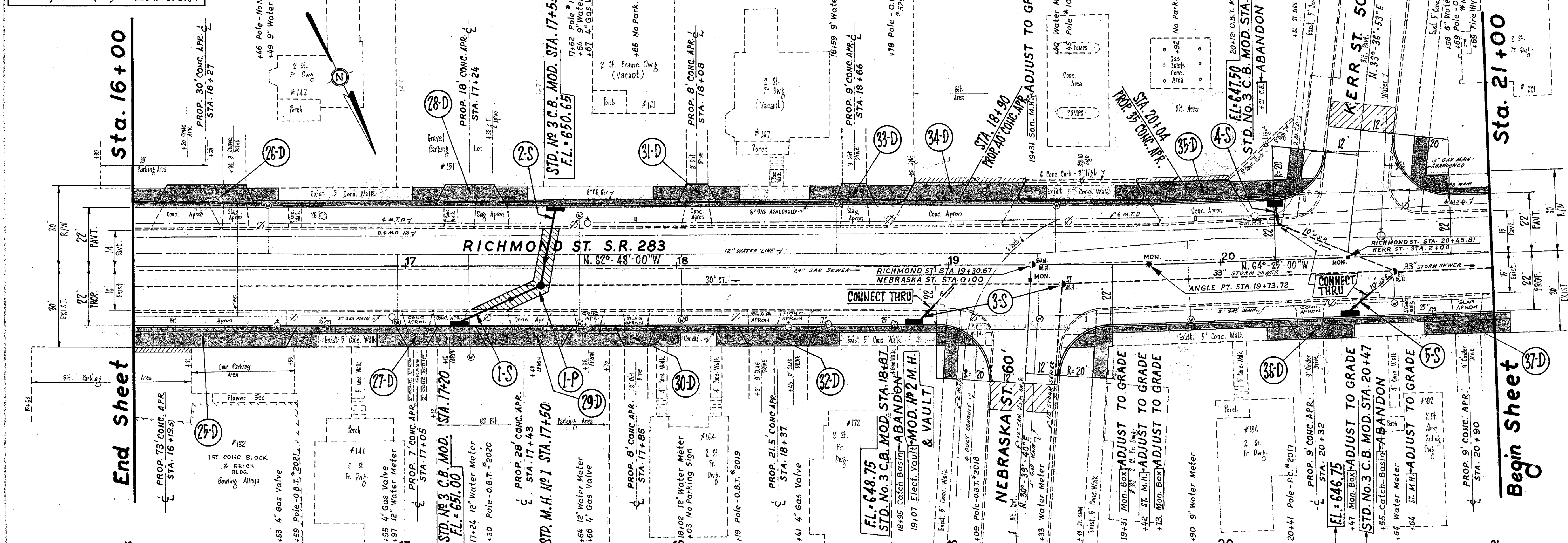


T.P. "X" ON E. END OF CONC. BASE OF GAS PUMPS, STA. 14+71, S.R. #283 (501). ELEV. = 659.34



NOTE: SEE EXTRA SHEET NOS 15 AND 16 FOR ADDITIONAL INTERSECTION DETAILS & QUANTITIES.

NOTE: FOR DRIVEWAY DETAILS & QUANTITIES, SEE SHEET NO 21

NOTE: FOR SUMMARY OF QUANTITIES, ITEM 659 SEEDING & MULCHING, ITEM 202 SIDEWALK REMOVED & DISPOSED OF, ITEM 604 MON. ADJ. TO GRADE, ITEM 608 4\"/>

Station	ITEM 202		ITEM 305		ITEM 402		ITEM 407		ITEM 310	
	Side	R or L	Removal & Disposal of Existing Pavement Base Course	Portland Cement Concrete Base Course	2 1/2\"/>					
FROM			SQ. YDS.	SQ. YDS.	CU. YDS.	GALS.	CU. YDS.	CU. YDS.	CU. YDS.	CU. YDS.
1-P	17+20	17+55	26	26	2	3	3	4.3	4.3	
TOTAL			26	26	* 2	3	3	4.3	4.3	

Station	ITEM 603		ITEM 604		ITEM 202	
	Side	R or L	STP No 1 Manhole	STP No 3 C.B. Modified	C.B. and/or Inlet Removed	Each
FROM			EACH	EACH	EACH	EACH
1-S	17+20	17+50	1	1	1	1
2-S	17+50	17+55	1	1	1	1
3-S	18+87	19+31	1	1	1	1
4-S	20+21	20+64	1	1	1	1
5-S	20+47	20+64	1	1	1	1
TOTAL			86	1	5	2
TOTAL						3

PLAN & PROFILE - RICHMOND ST. (S.R. #283) - STA. 16+00 to STA. 21+00