

B.M. -- TOP OF FIRE HYDRANT IN FRONT OF PAINESVILLE CITY HALL. ELEV. = 679.27

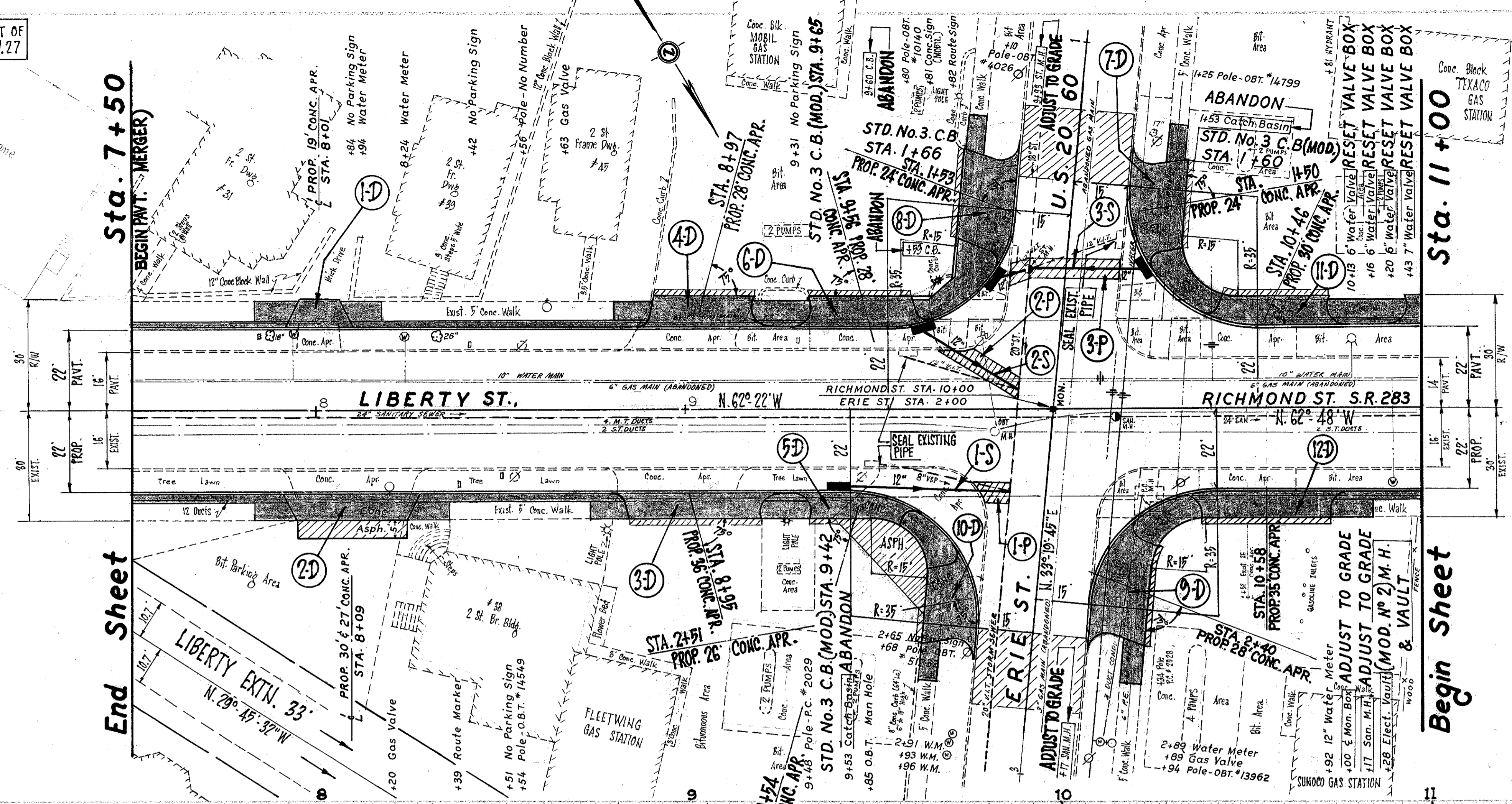
B.M. -- Top S.E. Bolt, GULF SIGN, STA. 11+41 S.R. No 283 (32' L). ELEV. = 668.68

STATE	PROJECT
OHIO	

8
34

LAKE COUNTY

LAK-283-16.85



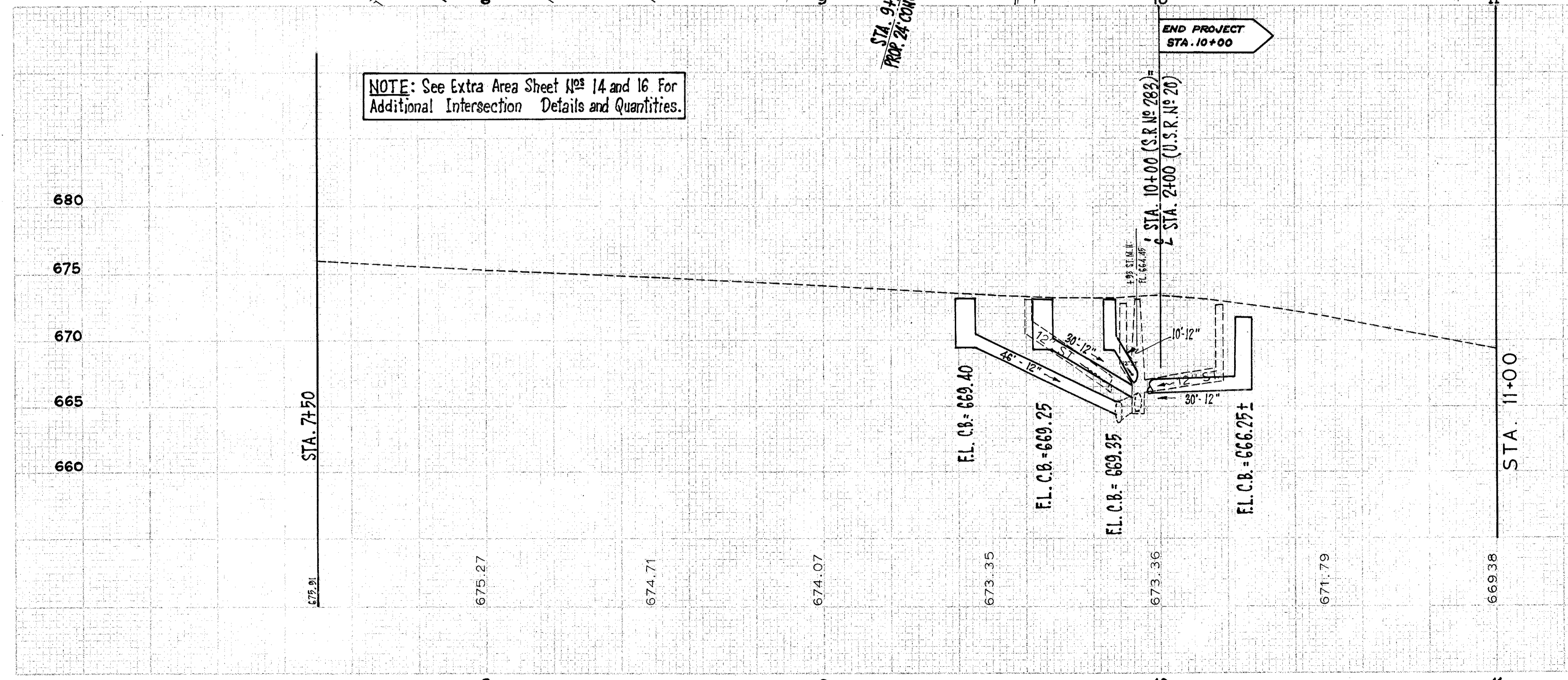
Ref. No	Station		Side R or L	ITEM 202	ITEM 305	ITEM 402	ITEM 407	ITEM 310
	FROM	TO		REMOVAL & DISPOSAL OF EXISTING PAVEMENT	9" PORTLAND CEMENT CONCRETE BASE COURSE	2 1/2" ASPHALTIC CONCRETE	BITUMINOUS TACK COAT @ 0.10 Gals. per SQ. YD.	6" SUBBASE
				SQ. YDS.	SQ. YDS.	CU. YDS.	GALS.	CU. YDS.
1-P	9+77	9+88	R	6	6			1.0
2-P	9+68	9+90	L	12	12	2.5	36	2.0
3-P	9+86	10+18	L	18	18			3.0
TOTAL				36	36	* 2.5	36	6.0

* TO BE LAID IN (2) - 1/4" COURSES

NOTE: See Extra Area Sheet Nos 14 and 16 For Additional Intersection Details and Quantities.

NOTE: FOR SUMMARY OF QUANTITIES, ITEM 659 SEEDING & MULCHING, ITEM 202 SIDEWALK REMOVED & DISPOSAL OF, ITEM 604 MON. ADJ TO GRADE, ITEM 608 4" CONCRETE SIDEWALK AND 100% CITY OF PAINESVILLE PARTICIPATION IN ITEMS 604, ITEMS 202 & ITEMS 608, SEE SHEET No 7.

NOTE: FOR DRIVEWAY DETAILS & QUANTITIES, SEE SHEET No 21.



Ref. No	Station		Side R or L	ITEM 603	ITEM 604		ITEM 202
	FROM	TO		12" TYPE "B" CONDUIT CLASS B' BEDDING	STD. No 3 C.B. MODIFIED	STORM M.H. ADJUSTED TO GRADE	STD. No 3 C.B. AND/OR INLET REMOVED
				LN. FT.	EACH	EACH	EACH
1-S	Sta. 6+79 (Sheet No 7)		R			1	
1-S	9+42	9+88	R	46	1		1
2-S	9+60	9+90	L	30	1		1
3-S	1+53 U.S.R. # 20	1+66 U.S.R. # 20	L & R	40	1	1	2
TOTAL				116	3	2	4