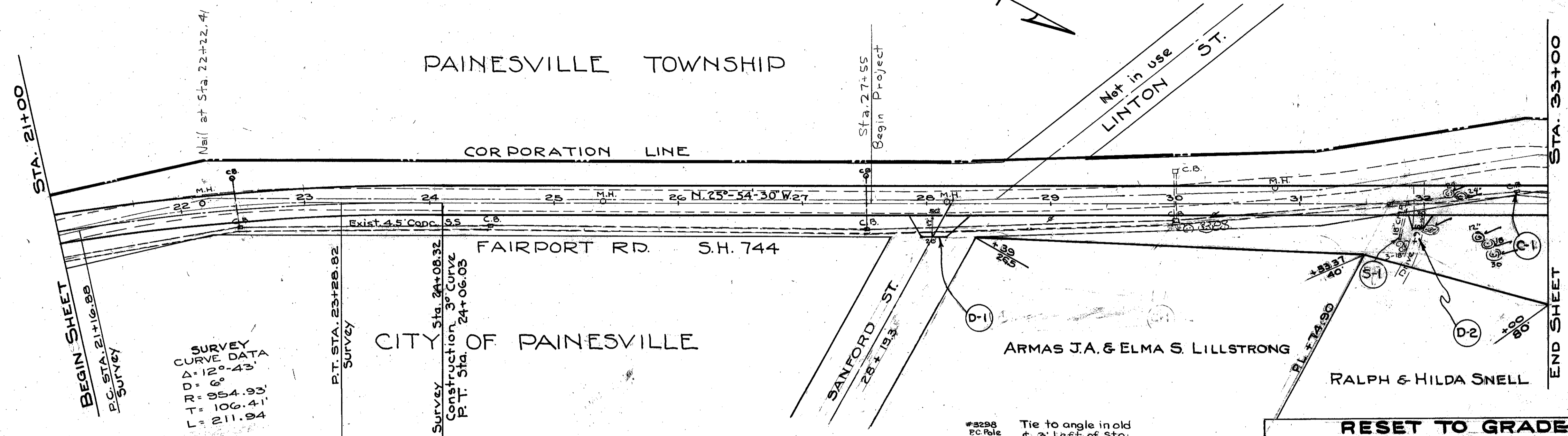


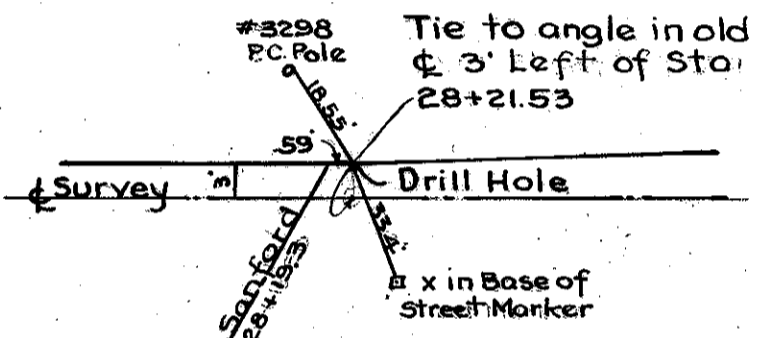
LAKE COUNTY  
S.H. 520 SEC. PAINESVILLE (PT.)  
S.H. 744 SEC. PAINESVILLE (PT.)  
& FAIRPORT (PT.)



**SURVEY CURVE DATA**  
 $\Delta = 120^\circ 43'$   
 $D = 6'$   
 $TR = 954.93'$   
 $LT = 106.41'$   
 $L = 211.94'$

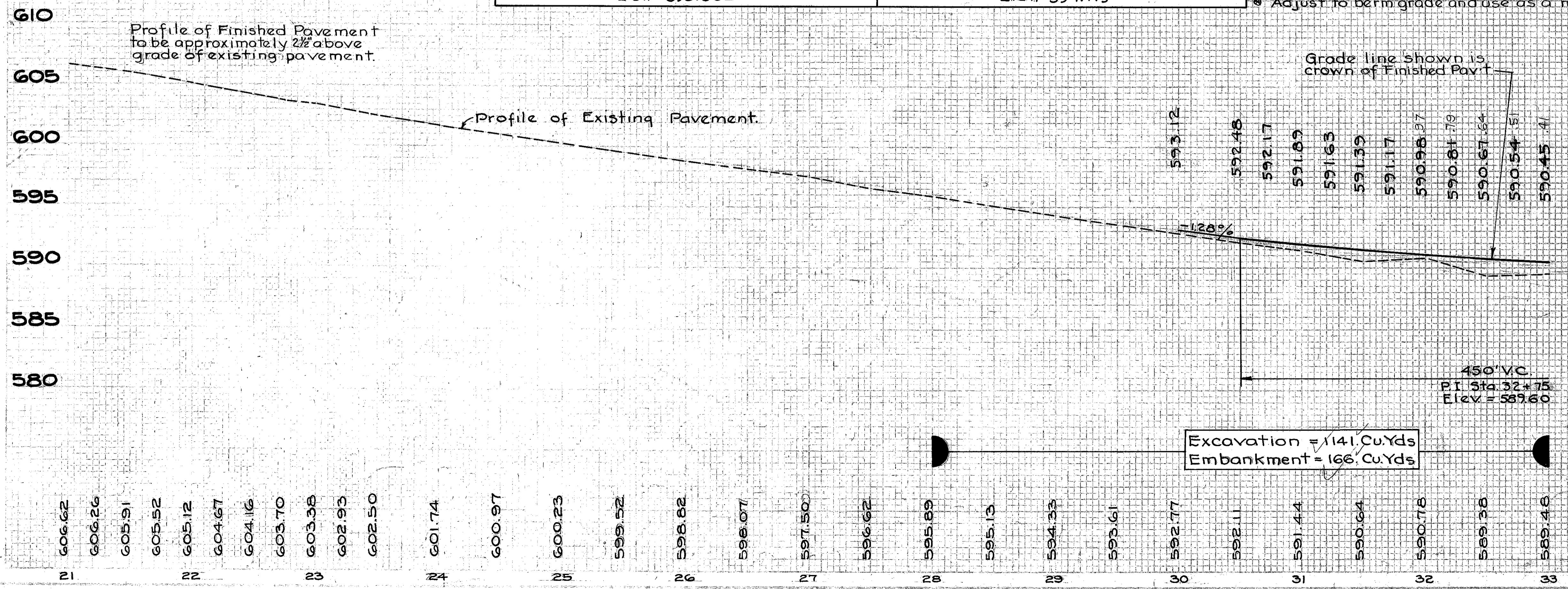
FOR PAVEMENT DETAIL, STA  
 16+21.53 TO 24+08.32, SEE SHEET 21.  
 24+08.32 TO 31+50, SEE SHEET 22.  
 31+50 TO 37+40.32, SEE SHEET 23.

B.M. No. 8 Spike in E. Side C.E.I. Pole # 77927 Elev. 598.862  
 B.M. No. 9 Spike in E. Side Pole P.C. 3300 Elev. 594.119



RESET TO GRADE					
Station	Side	Distance	M.H.	C.B.	W.V.
22 + 18	Lt.	5	1		
25 + 40	Lt.	2			
28 + 18	Lt.	2	1		
30 + 81	Lt.	12	1		
30 + 00	Rt.	13.5		1	
Total			4	1	

\* Adjust to berm grade and use as a manhole



DRIVES AND APPROACHES				
Item	Station	Side	I-117 Cu.Yds	T-35 Sq.Yds
D-1	28 + 20	Rt.		66
D-2	31 + 95	Rt.	1.4	
Total			1.4	66

\* Carried to Pavt. Calculations

STRUCTURES 20 SPAN & UNDER				
Mark	Station	Type	Size	Detailed
C-1	32 + 75	C.B. CAP	3' x 3'	26

PAVEMENT REMOVAL				
Station	To Station	Length	Width	Sq.Yds
21 + 70	23 + 10	See sheet (Var)		20.8
28 + 47	31 + 50	See sheet (Var)		140.
31 + 50	33 + 00	150	18	300.
Total				460.8

STORM SEWERS				
Item	Station	Side	18" Pipe LF	Rip. Rep. Sq.Yds
S-1	31 + 80	Rt.	4	5

REMOVAL OF TREES				
Station	Side	Distance	Size	Kind
32 + 06	Rt.	20	Triple	Elm
32 + 21	Lt.	8	24"	Willow
32 + 28	Lt.	6	24"	Willow
32 + 44	Rt.	26	12"	W.Cherry
32 + 50	Rt.	32	18"	Oak
32 + 57	Rt.	40	30"	Tw. Oak
Total = 6				

SEALING ONLY EDGE OF EXIST. PAV'T			
Station to Station	Side	Lip Ft.	Sq.Yds
21+00 21+50	Lt.	50	
23+00 29+75	Lt.	675	
21+00 31+50	Rt.	1050	
Total			1775