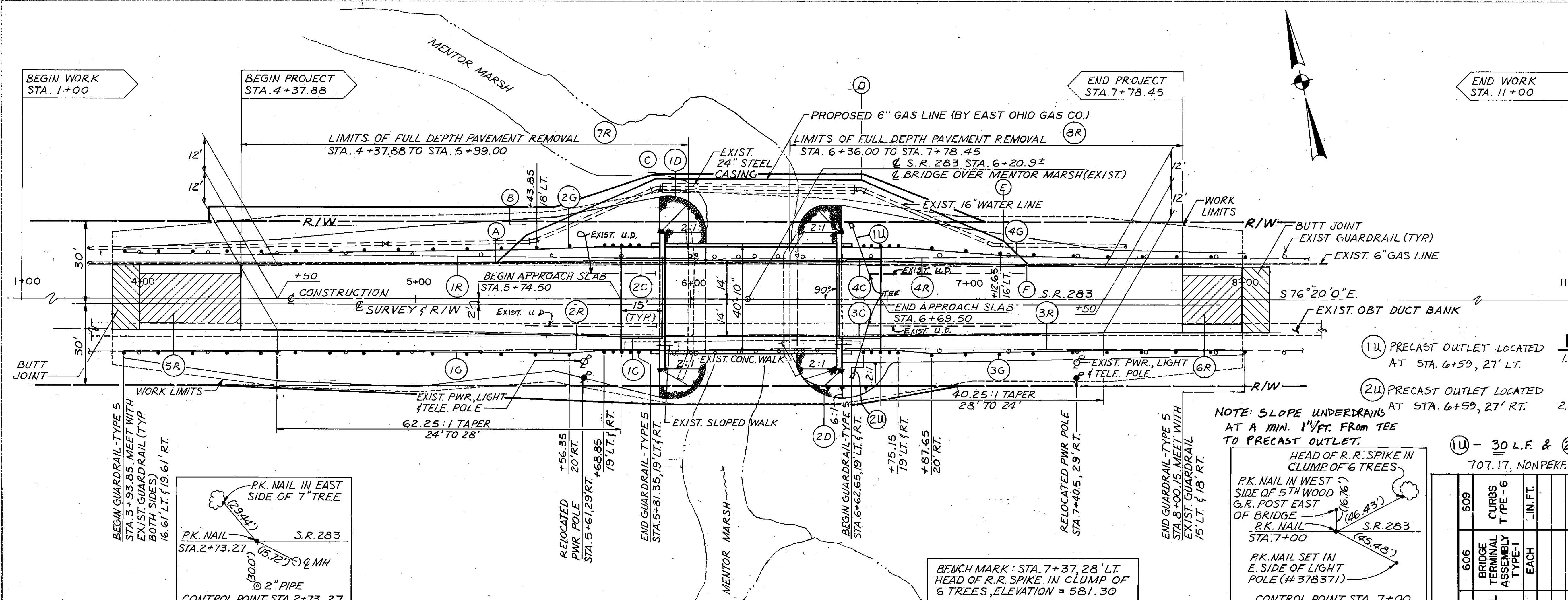


UTILITY RELOCATION CORNERS		
POINT	STATION	OFFSET
(A)	STA. 5+29.00	13.2' (±) LT.
(B)	STA. 5+40.00	23.0' (±) LT.
(C)	STA. 5+87.00	43.0' (±) LT.
(D)	STA. 6+62.00	43.0' (±) LT.
(E)	STA. 7+14.00	21.1' (±) LT.
(F)	STA. 7+22.00	13.1' (±) LT.

NOTE: ALL OFFSETS SHOWN ARE FROM & CONSTRUCTION.

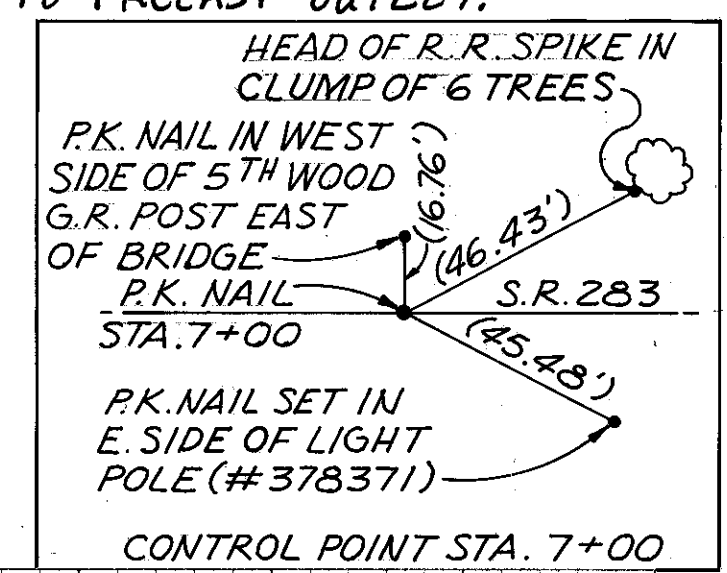
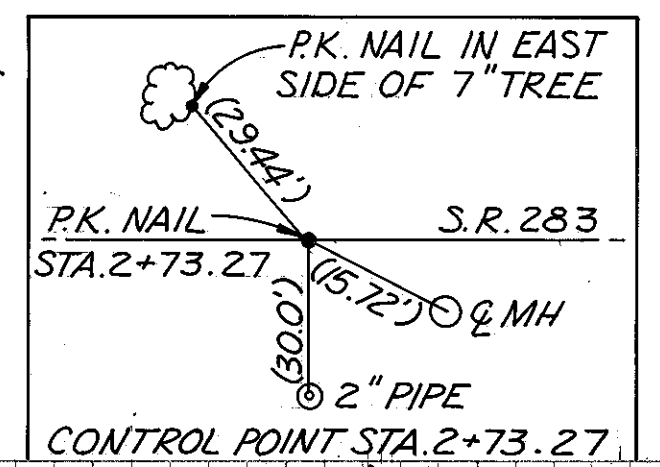


- (1U) PRECAST OUTLET LOCATED AT STA. 6+59, 27' LT.
- (2U) PRECAST OUTLET LOCATED AT STA. 6+59, 27' RT.

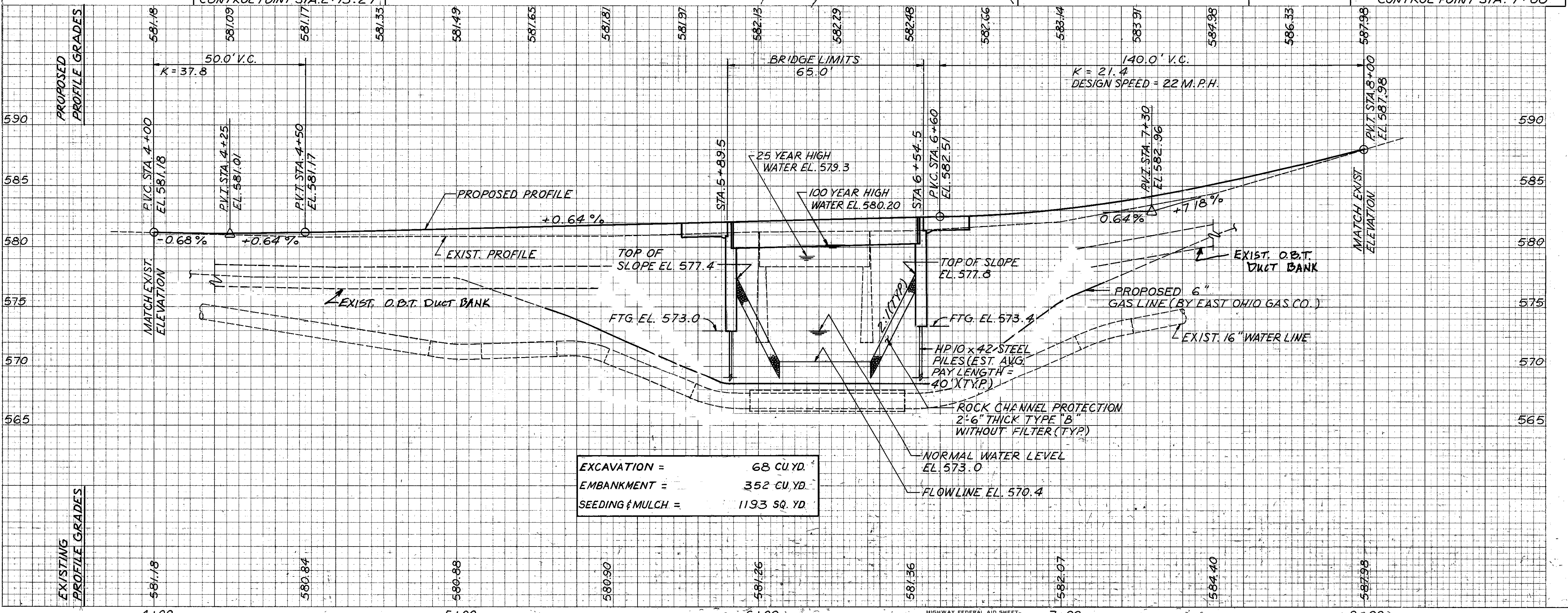
NOTE
 1. THE QUANTITY FOR FULL DEPTH PAVEMENT REMOVAL IS INCLUDED WITH ITEM 202.05 PAVEMENT REMOVED.
 2. IF REQUIRED, TEMPORARY RELOCATION OF OVERHEAD UTILITIES SHALL BE DONE TO FACILITATE THE CONSTRUCTION OF BRIDGE.

NOTE: SLOPE UNDERDRAINS AT A MIN. 1 1/2" FT. FROM TEE TO PRECAST OUTLET.

(1U) - 30 L.F. & (2U) - 30 L.F. 603-6" CONDUIT, TYPE F 707.17, NONPERF. ASTM 3034 SDR 35 OR SS 931.



BENCH MARK: STA. 7+37.28 'LT. HEAD OF R.R. SPIKE IN CLUMP OF 6 TREES, ELEVATION = 581.30



ESTIMATED QUANTITIES

REF. NO.	STATION TO STATION	SIDE	WEARING COURSE REMOVED	GUARDRAIL REMOVED	PAVEMENT REMOVED	ROCK CHANNEL PROTECTION TYPE "B" WITHOUT FILTER FABRIC	GUARDRAIL TYPE-5	BRIDGE TERMINAL ASSEMBLY TYPE-1	CURBS TYPE-6	TOTALS
			SQ. YD.	LN. FT.	SQ. YD.	CU. YD.	LN. FT.	EACH	LN. FT.	
IR	4+00 TO 5+99	LT		199						
2R	4+00 TO 5+99	RT		199						
3R	6+36 TO 8+00	RT		164						
4R	6+36 TO 8+00	LT		164						
5R	4+00 TO 4+37.88		76		322					
6R	7+78.45 TO 8+00		43		285					
7R	4+37.88 TO 5+99					110				
8R	6+36 TO 7+78.45	RT							15	
1C	5+74.50 TO 5+89.50	LT							15	
2C	5+74.50 TO 5+89.50	RT							15	
3C	6+54.50 TO 6+69.50	RT							15	
4C	6+54.50 TO 6+69.50	LT							15	
1D	5+92 TO 6+07									
2D	6+37 TO 6+52									
1G	3+93.85 TO 5+81.35	RT								60
2G	3+93.85 TO 5+81.35	LT								4
3G	6+62.65 TO 8+00.15	RT								650
3G	6+62.65 TO 8+00.15	LT								214
4G	6+62.65 TO 8+00.15	LT								607
			119	726	607	214	650	4	60	