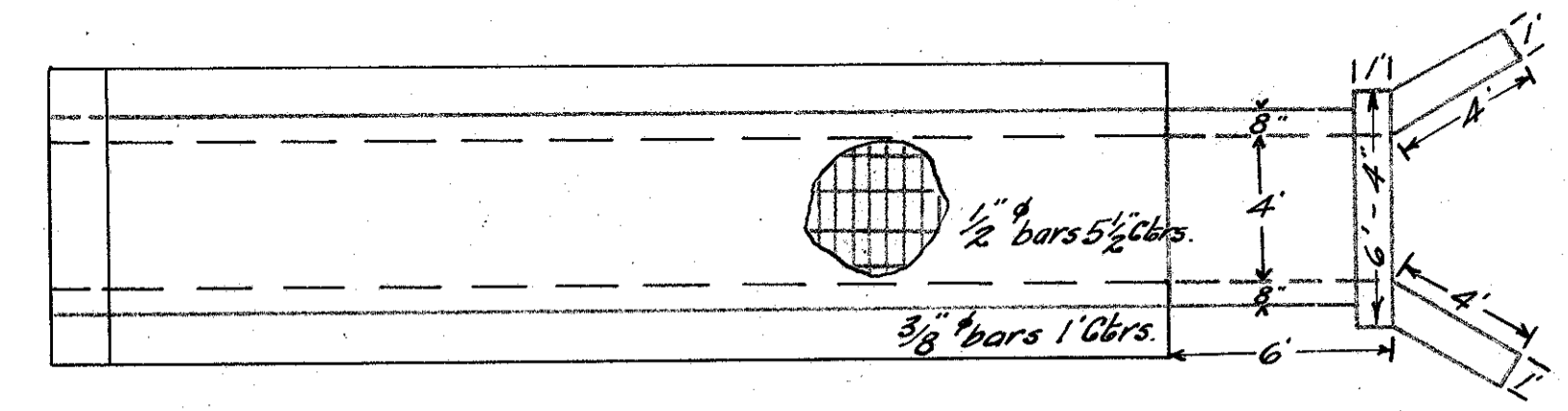
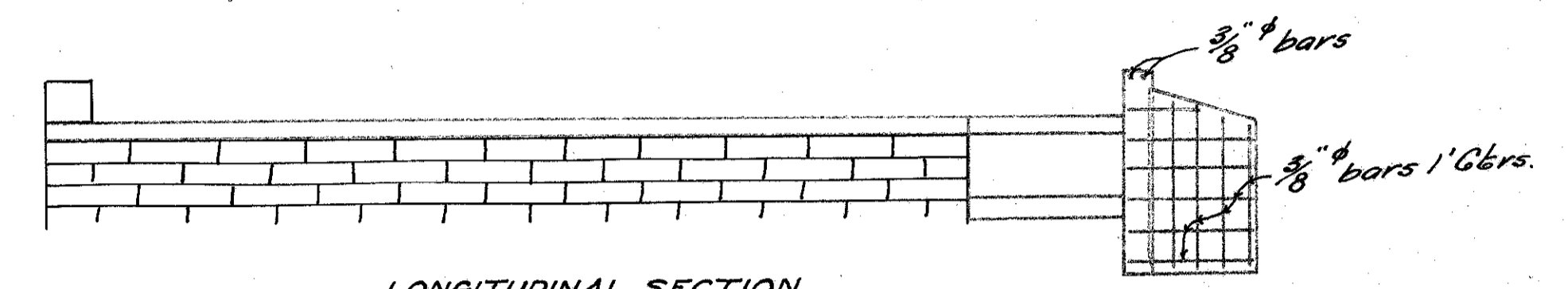


CULVERT AT STA. 28+62



PLAN



LONGITUDINAL SECTION

- QUANTITIES
 10 cu. yds. excavation
 12.2 cu. yds. 1-2-4 concrete
 641 lbs. of steel
 7 cu. yds. old stone to be removed
 repoint old stone masonry
 reset 1 parapet

