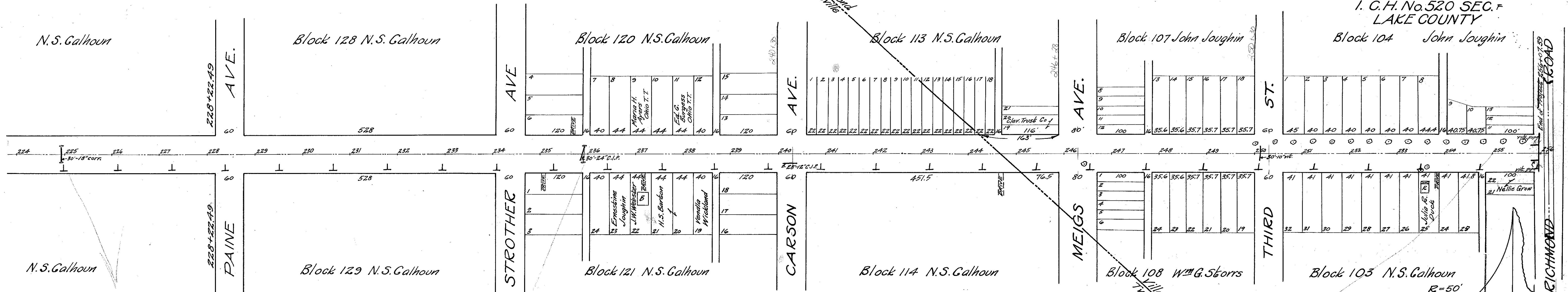


I. C. H. No. 520 SEC. F  
LAKE COUNTY  
Block 104 John Soughin



Sta. 224+96 Build 18" encased vitrified pipe culvert 36' long, 2 ft. ws. 8.0 cu. yds. excavation 2.7 cu. yds. 1-2-4 concrete 5.6 cu. yds. 1-3-6 concrete 28 lin. ft. 18" vitrified pipe 8 lin. ft. 18" vit. pipe from sta. 165+32 to be relaid 30 lin. ft. 18" corr. pipe to be removed

Sta. 235+90 30'-24" cast iron pipe to be relaid & extended with 6' of 24" vitrified encased 2 headwalls 8.0 cu. yds. excavation 3.5 cu. yds. 1-2-4 concrete 1.2 cu. yds. 1-3-6 concrete 6 lin. ft. 24" vitrified pipe 30'-24" cast iron pipe to be relaid Sta. 250+13 30' of 10" vitrified to be removed

Sta. 255+97 30'-12" vit. pipe encased + 94'-12" vit. pipe sewer, 3 headwalls 20 cu. yds. excav., 1.78 cu. yds. 1-2-4 conc., 8.7 cu. yds. 1-3-6 conc., 86'-12" vit. pipe to be removed + relaid, 58'-12" vit. pipe, 2'-12" x 12" Ts., 32'-8" vit. to be removed

Intersection at sta. 256 122 sq. yds. extra pav. scale 1" = 20'

B.M.\* 56 Sta. 228+40 Spike in tel. pole 22' to R. of C. Elev. = 614.93

B.M.\* 57 Sta. 232+96 Spike in tel. pole 22' to R. of C. Elev. = 613.61

B.M.\* 58 Sta. 237+54 Spike in tel. pole 22' to R. of C. Elev. = 613.08

B.M.\* 59 Sta. 244+13 Spike in 18" elm 50' to L. of C. Elev. = 614.24

B.M.\* 60 Sta. 246+60 Spike in tel. pole 22' to R. of C. Elev. = 613.29

B.M.\* 61 Sta. 250+06 Spike in 10" maple 22' to L. of C. Elev. = 612.98

B.M.\* 62 Sta. 253+50 Spike in 14" maple 30' to R. of C. Elev. = 611.55

