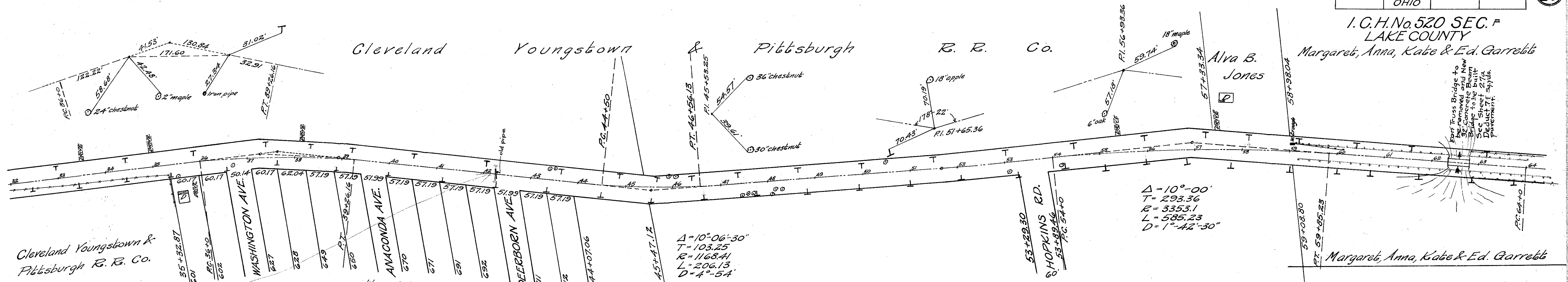


I. C. H. No. 520 SEC. F  
LAKE COUNTY  
Margaret, Anna, Kate & Ed. Garreth



Cleveland Youngstown & Pittsburgh R. R. Co.  
6" Drain tile, both sides Sta. 32 to 59+25  
Sta. 42+25 Build standard 12" encased vitrified pipe culverts 36' long and 2 headwalls  
7.0 cu. yds. excavation, 2 cu. yds. 1-2-4 conc.  
3.9 cu. yds. 1-8-6 concrete, 36-12" vit. pipe  
20 lin. ft. old pipe to be removed

Δ=12°-42'  
T=163.75  
R=1471.46  
L=326.16  
D=3°-54'

LEFT				RIGHT			
Edge Pav.	Width	Station	Grade Ele.	Width	Station	Grade Ele.	Edge Pav.
603.09	9'	35+50	603.26	9'	603.09		
604.39	9'	36+00	604.18	9'	604.01		
605.55	9'	36+50	604.96	9'	604.79		
606.07	9'	37+00	605.48	9'	605.31		
606.34	9'	37+50	605.73	9'	605.56		
606.81	9'	38+00	605.72	9'	605.55		
606.16	9'	38+50	605.57	9'	605.40		
606.01	9'	39+00	605.42	9'	605.25		
605.55	9'	39+26.16	605.34	9'	605.17		
605.29	9'	39+50	605.27	9'	605.10		
605.02	9'	39+76.16	605.19	9'	605.02		

LEFT				RIGHT			
Edge Pav.	Width	Station	Grade Ele.	Width	Station	Grade Ele.	Edge Pav.
605.37	9'	44+00	605.54	9'	605.37		
605.62	10.08	44+50	605.79	9'	605.91		
607.27	"	45+00	605.79	9'	606.46		
605.88	11.00	45+50	606.05	9'	606.46		
606.18	11.00	45+50	606.30	9'	606.71		
606.39	11.00	46+00	606.56	9'	606.97		
606.64	10.00	46+50	606.81	9'	606.93		
606.90	9'	47+00	607.07	9'	606.90		

LEFT				RIGHT			
Edge Pav.	Width	Station	Grade Ele.	Width	Station	Grade Ele.	Edge Pav.
609.91	9'	53+50	610.08	9'	609.91		
609.74	"	54+00	609.76	"	609.59		
609.27	"	54+50	609.14	"	608.97		
608.40	"	55+00	608.27	"	608.10		
607.48	"	55+50	607.35	"	607.19		
606.98	"	56+00	606.92	"	606.14		
604.16	"	56+50	604.03	"	603.86		
601.74	"	57+00	601.61	"	601.44		
599.76	"	57+50	598.82	"	599.46		
595.38	"	58+00	595.25	"	595.08		
591.79	"	58+50	591.36	"	591.19		
587.65	"	59+00	587.54	"	587.35		
584.55	"	59+50	584.32	"	584.32		
582.22	"	60+00	582.59	"	582.48		
580.28	"	60+25	581.76	"	581.48		

Guard Rail  
Sta. 59+20 to Sta. 64+0 on the left  
Sta. 59+20 to Sta. 64+48 on the right  
Sta. 62+50  
See special plan

B.M. #11 Sta. 36+67  
Spike in 20" chestnut  
17' 60" L of P  
Elev. = 606.05

B.M. #12 Sta. 43+46  
Spike in 10" cherry  
26' 60" L of P  
Elev. = 605.37

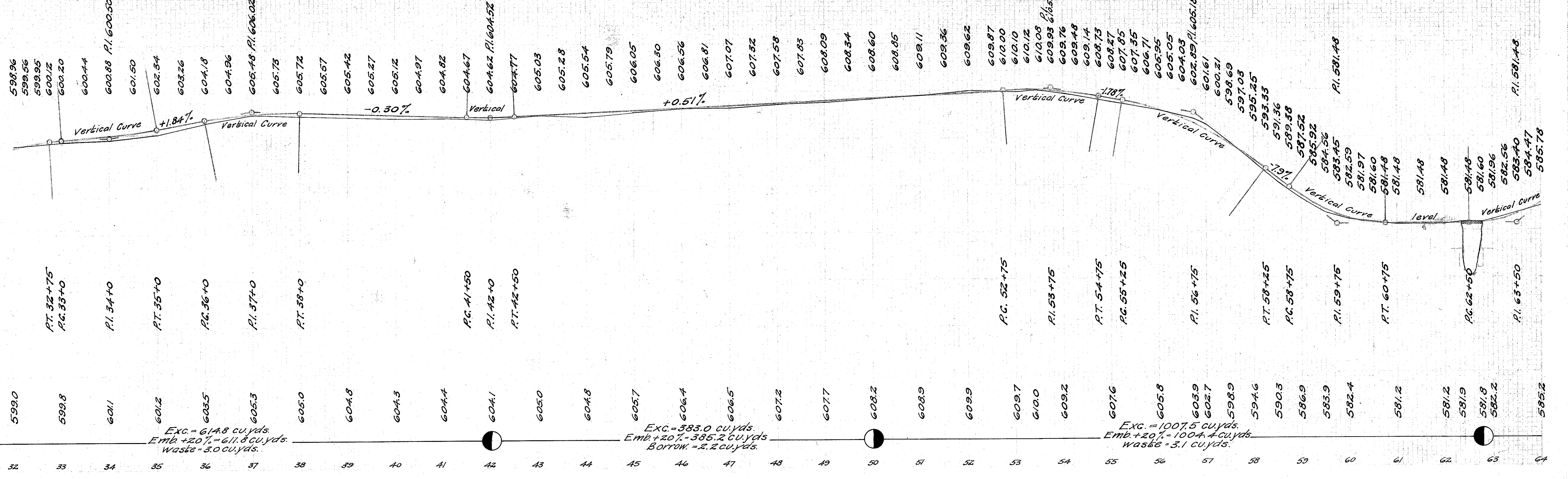
B.M. #13 Sta. 48+29  
Spike in 24" oak  
21' 60" L of P  
Elev. = 607.90

B.M. #14 Sta. 53+02  
Spike in 24" W. cherry  
22' 60" L of P  
Elev. = 610.84

B.M. #15 Sta. 57+51  
Spike in 18" maple  
24' 60" L of P  
Elev. = 602.25

B.M. #16 Sta. 59+03  
+ on S.W. cor. of water trough  
15' 60" L of P  
Elev. = 587.87

B.M. #17 Sta. 63+35  
Spike in 36" oak  
150' 60" L of P  
Elev. = 583.48



Exc. = 614.8 cu. yds.  
Emb. +20% = 611.8 cu. yds.  
Waste = 3.0 cu. yds.

Exc. = 383.0 cu. yds.  
Emb. +20% = 385.2 cu. yds.  
Borrow = 2.2 cu. yds.

Exc. = 1007.5 cu. yds.  
Emb. +20% = 1004.4 cu. yds.  
Waste = 3.1 cu. yds.