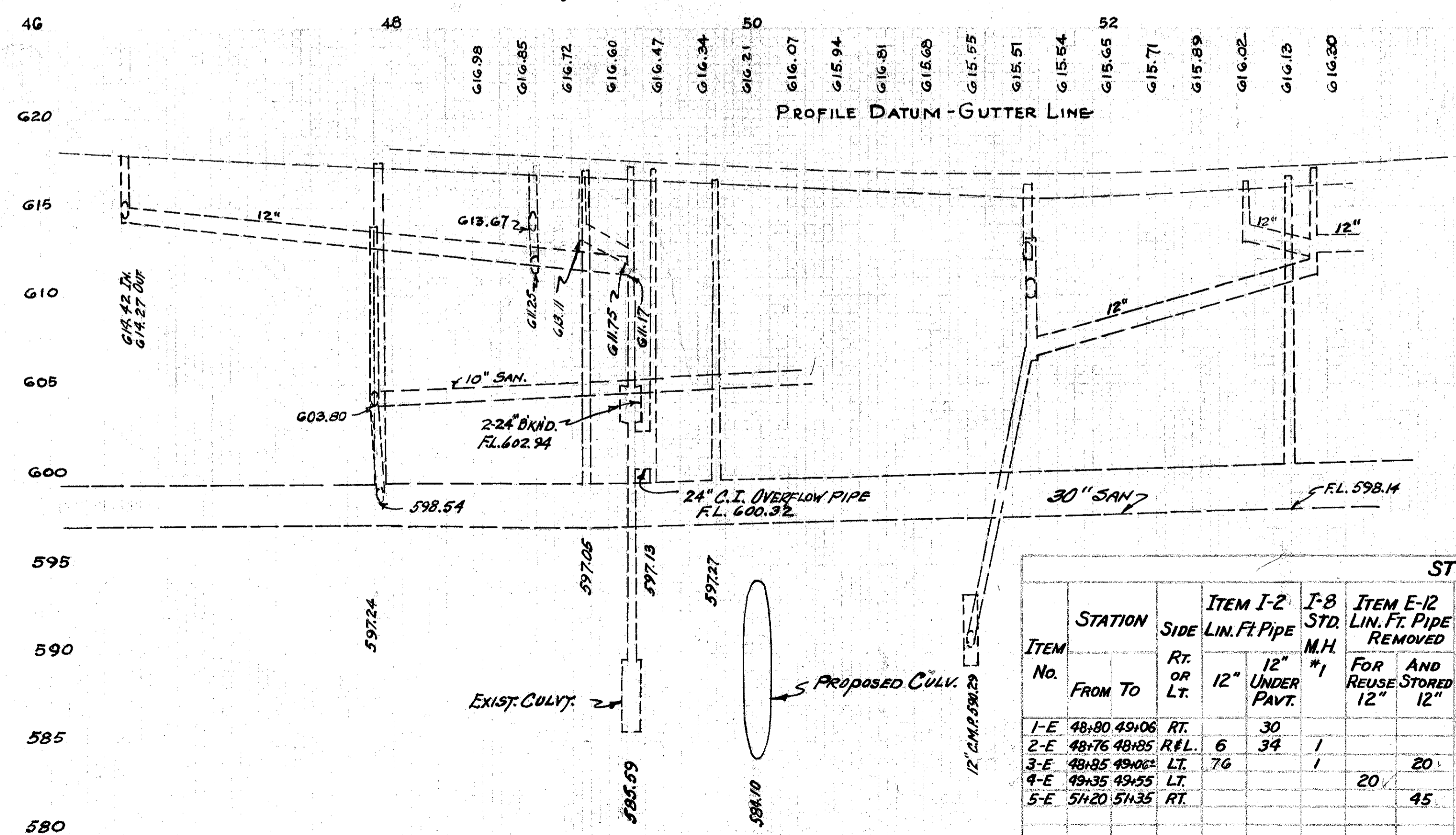
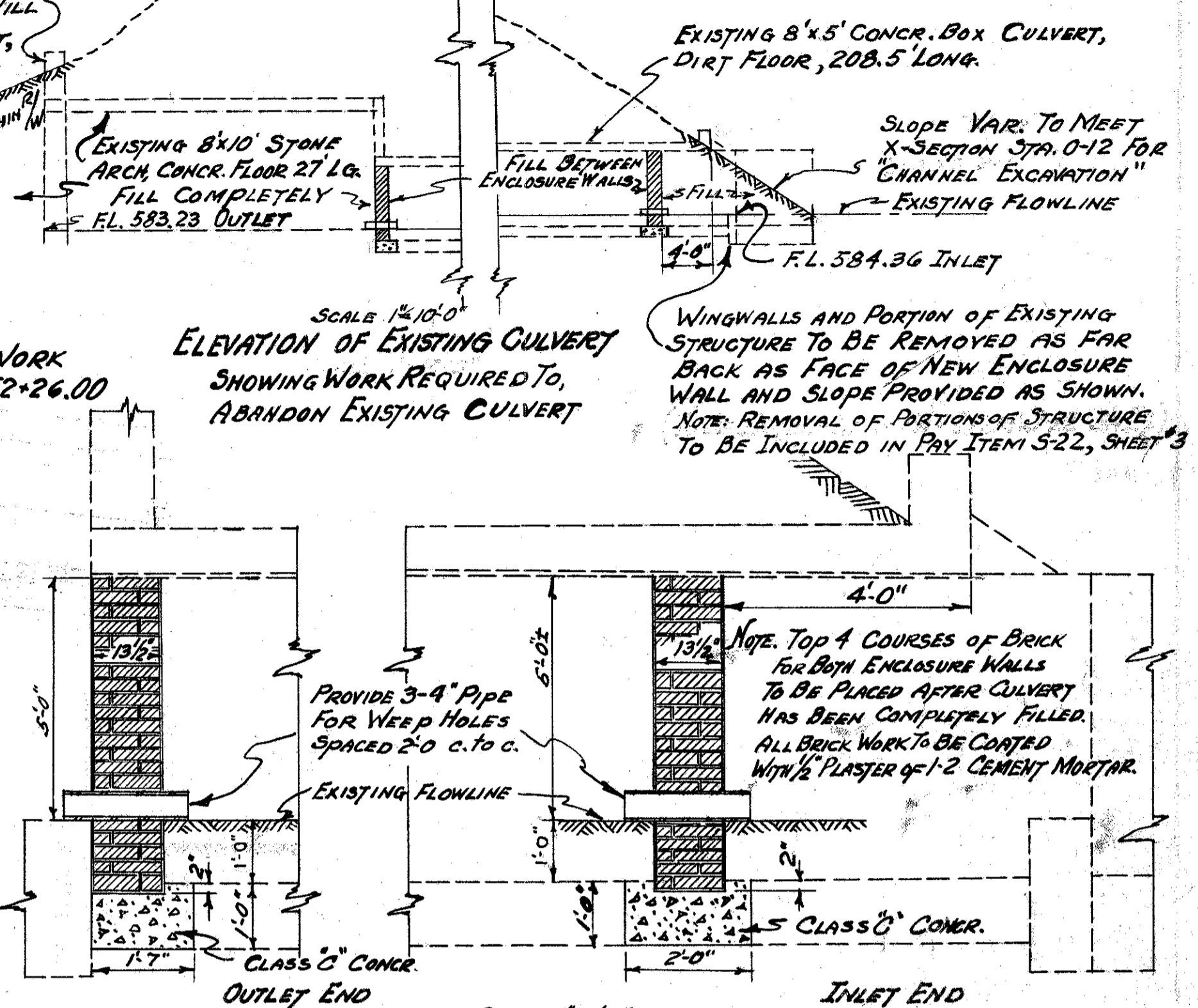
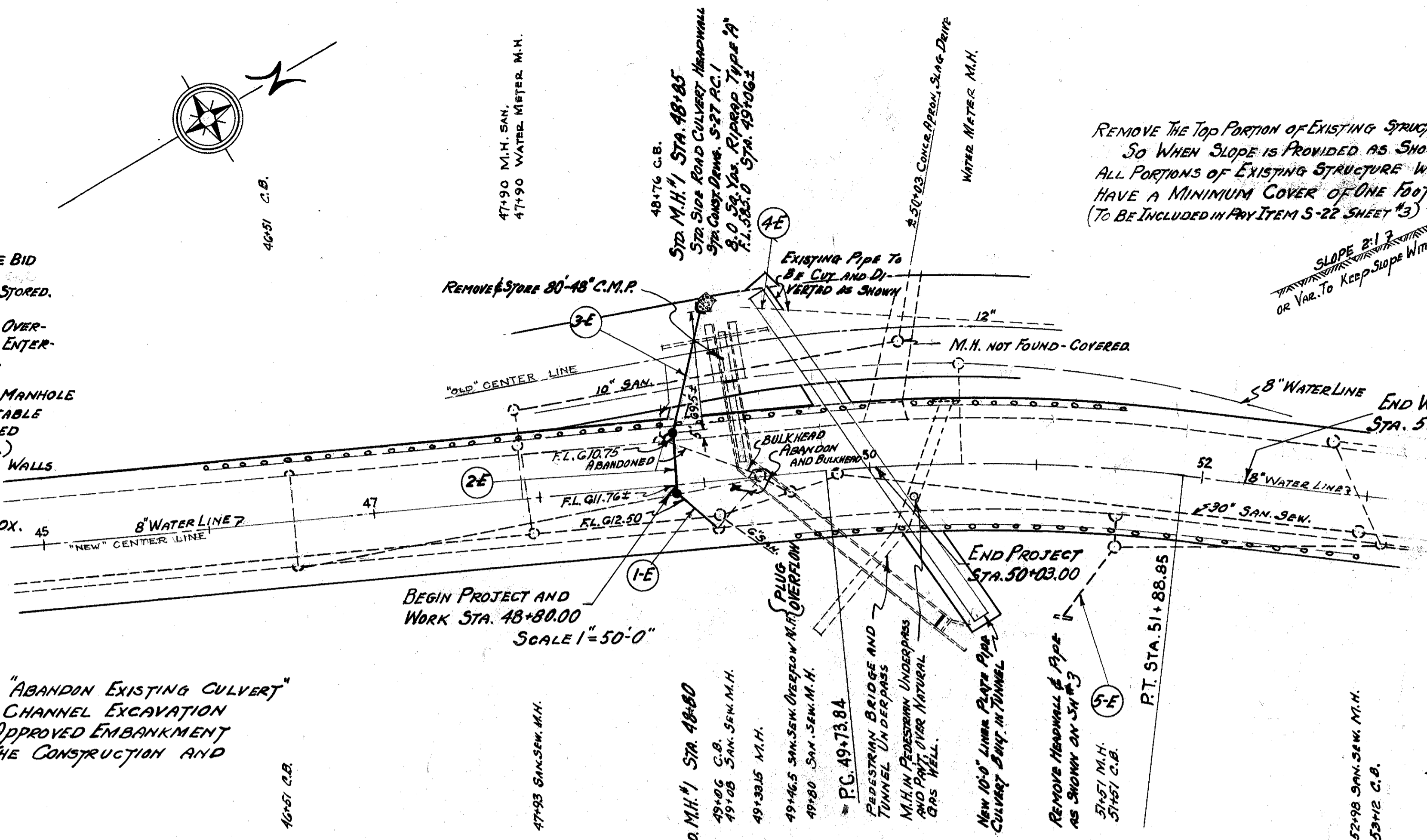


ABANDON EXISTING CULVERT (Lump Sum)

THE FOLLOWING WORK SHALL BE INCLUDED IN THE UNIT PRICE BID FOR ITEM ABANDON EXISTING CULVERT. THE 80 LINEAL FEET OF 48" CORRUGATED PIPE REMOVED AND STORED. THE 12" PIPE FROM C.B. AT STA. 49+06 BULKHEADED. THE 24" SANITARY OVERFLOW BULKHEADED AT THE SANITARY SEWER OVERFLOW MANHOLE STA. 49+46.5. THE 24" AND 3-12" PIPES ENTERING MANHOLE OVER EXISTING CULVERT ALL BULKHEADED. THE ENCLOSURE WALLS BUILT AS PER PLAN. THE EXISTING CULVERT BETWEEN ENCLOSURE WALLS AND MANHOLE SHALL BE COMPLETELY FILLED WITH SAND AND OR OTHER ACCEPTABLE MATERIALS. PLACED HYDRAULICALLY OR BY OTHER APPROVED METHODS. (APPROXIMATELY 320.0 + 22% = 390 CU.YDS.) THE REMAINING ENDS OF CULVERT OUTSIDE OF ENCLOSURE WALLS SHALL BE COMPLETELY FILLED AND SLOPES PROVIDED AS SHOWN ON THIS SHEET ALL ACCORDING TO ITEM E.207 OF THE STATE CONSTRUCTION AND MATERIAL SPECIFICATIONS. (APPROX. 345.0 + 22% = 421 CU.YDS.)

NOTE: MATERIAL TO BE USED FOR FILL IN ABOVE ITEM "ABANDON EXISTING CULVERT" CAN BE EXCAVATED MATERIAL FROM TUNNEL OR CHANNEL EXCAVATION PROVIDED THAT SUCH MATERIAL COMPLIES WITH APPROVED EMBANKMENT MATERIAL AS DESCRIBED BY SEC. E-1.05 OF THE CONSTRUCTION AND MATERIAL SPECIFICATIONS.



ROADSIDE IMPROVEMENT L-9		
SEEDING & PROTECTING TYPE #1 SQ. YDS.	COMMERCIAL FERTILIZER TONS	AGRICULTURAL GROUND LIMESTONE TONS
1180	0.11	0.27

NOTE: THE 10" REINFORCED CONCRETE BASE (ITEM B-71) OVER SEWER TRENCH IS TO BE FINISHED 2" BELOW EXISTING SURFACE OF PAVEMENT. THE 2" THICKNESS OF ASPHALTIC CONCRETE NECESSARY TO MEET GRADE OF PAVEMENT IN THIS AREA IS NOT A PART OF THIS CONTRACT.

STORM SEWERS																
ITEM No.	STATION FROM TO	SIDE RT. OR LT.	ITEM I-2 LIN. FT. PIPE		I-8 STD. M.H. #1	ITEM E-12 LIN. FT. PIPE REMOVED		ITEM I-6 RELAYING 12" PIPE	ITEM I-5 12" PIPE SPECIAL EACH	ITEM S-2 REMOVAL OF EXIST. HEAD-WALL	ITEM S-4 REIN-FORCING STEEL LBS.	ITEM S-1 CLASS "C" CONCR. CU.YDS.	ITEM E-2 EXCAV. FOR STRUCTURE CU.YDS.	ITEM I-10 Rip-Rap Sq.Yds.	ITEM B-71 10" REIN. CONCR. BASE Sq.Yds.	LOCATION OF STRUCTURE
			12"	12" UNDER PAVT.		FOR REUSE	AND STORED 12"									
1-E	48+80-49+06	RT.	30		1										17	48+80
2-E	48+76-48+85	R.F.L.	6	34	1										17	48+85-49+06
3-E	49+85-49+06	LT.	76		1	20					30	1.1	3.0	8.0		48+85-49+06
4-E	49+35-49+55	LT.				20		20	1							
5-E	51+20-51+35	RT.				45				LUMP						51+20
TOTALS			82	64	2	20	65	20	1	LUMP	30	1.1	3.0	8.0	34	