

# PAVEMENT REPAIR DETAILS

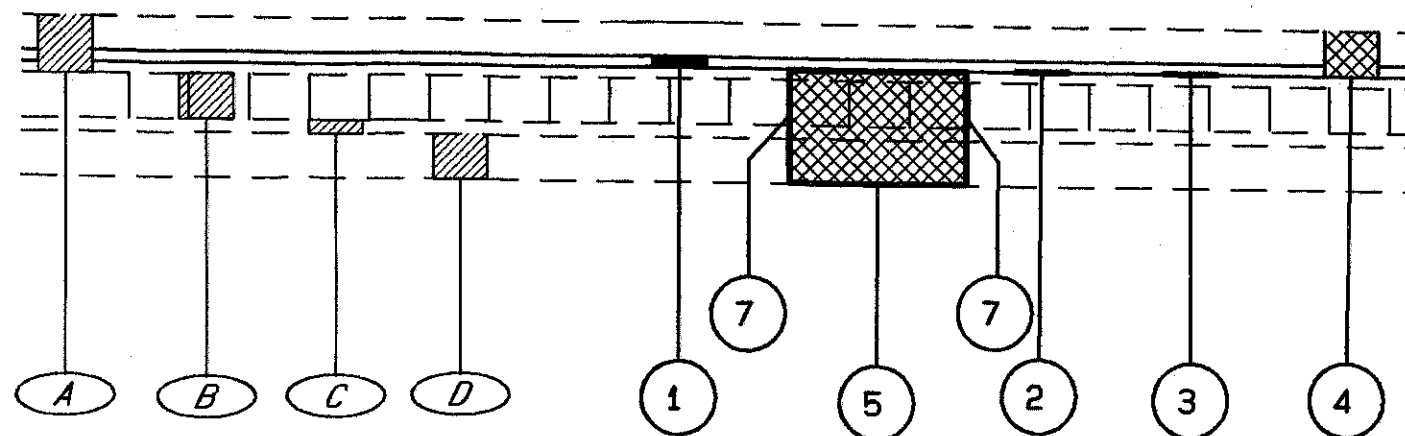
5-LANE SECTION STA. 0+000.000 TO STA. 2+326.843

LAKE COUNTY  
LAK-283-0.000



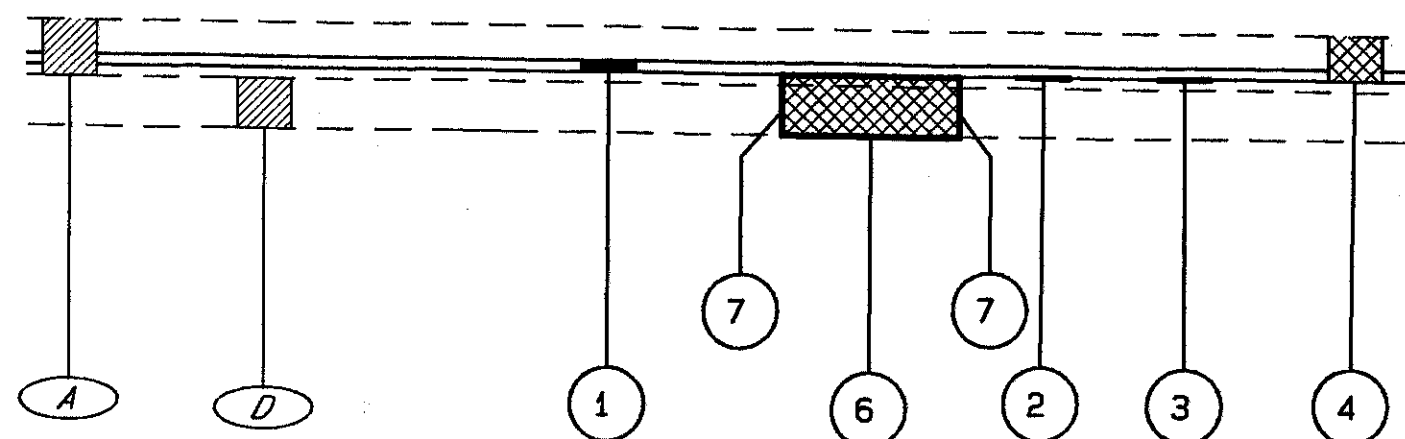
74  
121

PLAN NO.



FULL DEPTH RIGID PAVEMENT REMOVAL & FLEXIBLE REPLACEMENT, TYPE I  
STA. 0+000.000 TO STA. 1+251.814, LEFT

- LEGEND
- ① ITEM 448 - 32 mm ASPHALT CONCRETE SURFACE COURSE, TYPE 1, PG 64-22
  - ② ITEM 448 - 0mm (MIN.) ASPHALT CONCRETE INTERMEDIATE COURSE, TYPE 1, PG 64-22
  - ③ ITEM 407 - TACK COAT
  - ④ ITEM 254 - PAVEMENT PLANING, BITUMINOUS ( 102 mm THICKNESS )
  - ⑤ ITEM 252 - FULL DEPTH RIGID PAVEMENT REMOVAL & FLEXIBLE REPLACEMENT, TYPE I
  - ⑥ ITEM 252 - FULL DEPTH RIGID PAVEMENT REMOVAL & FLEXIBLE REPLACEMENT, TYPE II
  - ⑦ ITEM 252 - FULL DEPTH PAVEMENT SAWING



FULL DEPTH RIGID PAVEMENT REMOVAL & FLEXIBLE REPLACEMENT, TYPE II  
STA. 0+000.000 TO STA. 1+251.814  
STA. 1+251.814 TO STA. 1+478.280  
STA. 1+623.060 TO STA. 2+326.843

- LEGEND
- (A) EXISTING ASPHALT CONCRETE
  - (B) EXISTING BRICK BASE
  - (C) EXISTING CUSHION COURSE
  - (D) EXISTING 166 mm± CONCRETE BASE

FOR FULL DEPTH REPAIR PAVEMENT QUANTITIES  
SEE GENERAL NOTES SHEETS 11 AND 14.

93300 FRI 08/08/97 01:12 PM MATT FILES: D102.PLT

DETAILS - LAYER 102