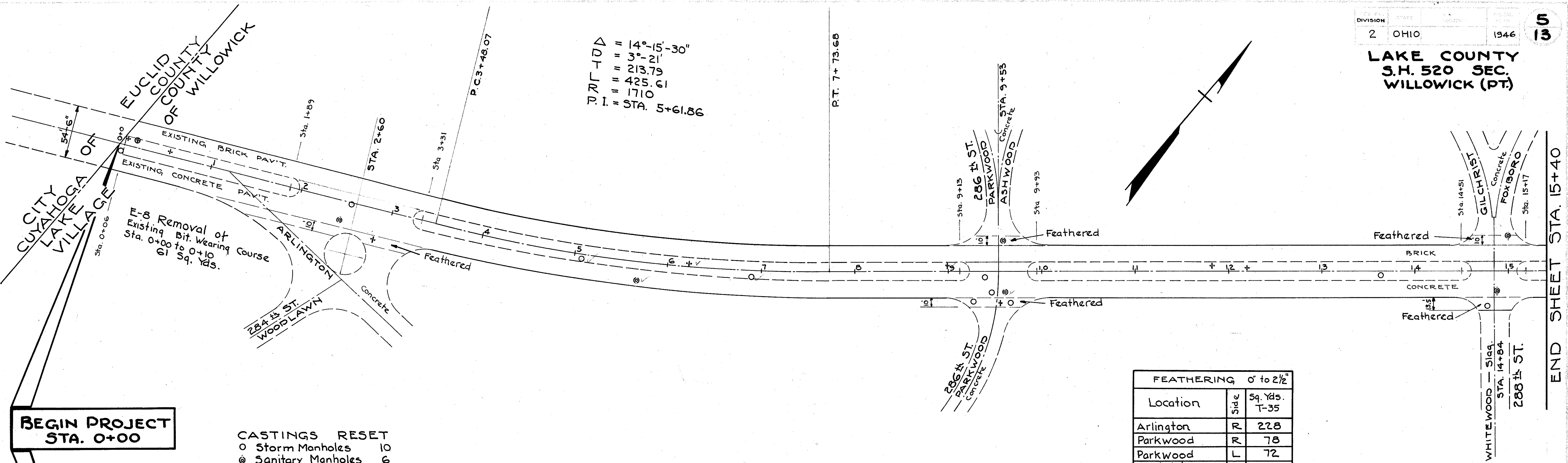


LAKE COUNTY
S.H. 520 SEC.
WILLOWICK (PT.)

PT. 100 = 14°-15'-30"
 = 3°-21'
 = 213.79
 = 425.61
 = 1710
 P.I. = STA. 5+61.86

P.T. 7+73.68

P.C. 3+48.07



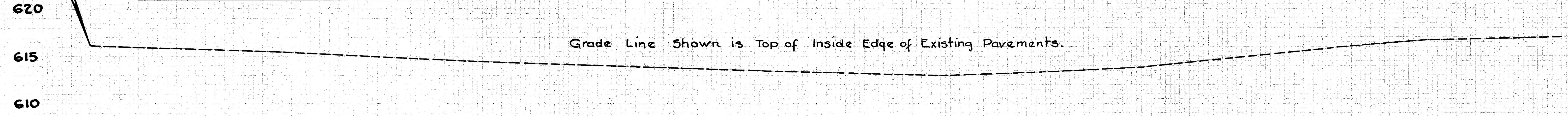
**BEGIN PROJECT
STA. 0+00**

- CASTINGS RESET
- Storm Manholes 10
 - ⊙ Sanitary Manholes 6
 - ⊕ Water Meter M.H. 1
 - ⊕ Water Valve Box 8

LAKE SHORE BLVD. S.H. 520

FEATHERING 0' to 2 1/2"		
Location	Side	Sq. Yds. T-35
Arlington	R	228
Parkwood	R	78
Parkwood	L	72
Gilchrist	L	67
White Wood	R	68
Total		513

SQ. YDS. IN CENTER STRIP								
Station		Length	Width	Sq. Ft.	Sq. Ft. in Ends	Total Sq. Ft.	Sq. Yds.	Sealing Edge F-B Lin. Ft.
0+06	1+89	183	18.5	3385.5	134.40	3519.90		413.60
3+31	9+13	582	18.5	10767.0	268.80	11035.80		1222.20
9+93	14+51	458	18.5	8473.0	268.80	8741.80		974.20
15+17	15+40	23	18.5	425.5	134.40	559.90		65.10
						23857.40	2650.82	2675.10



Grade Line Shown is Top of Inside Edge of Existing Pavements.

