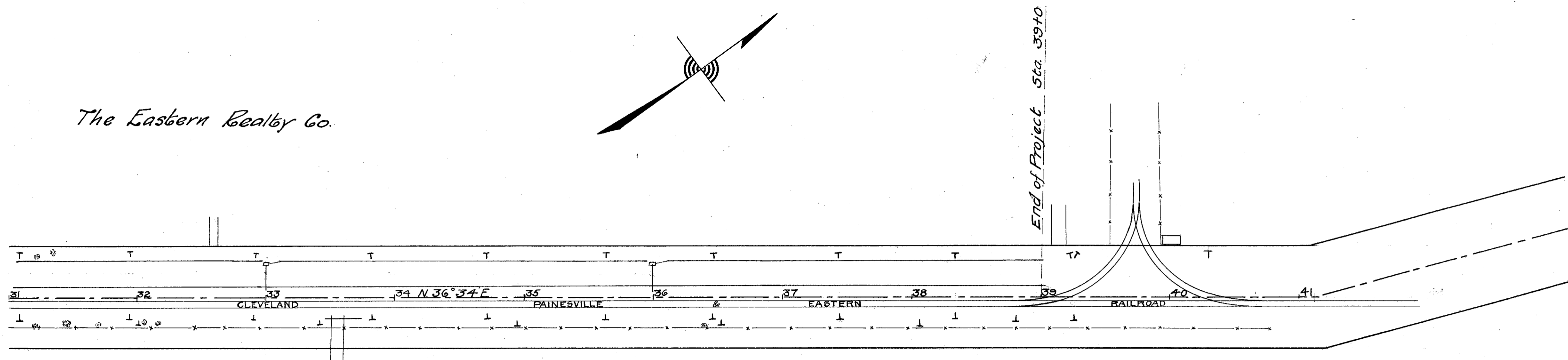
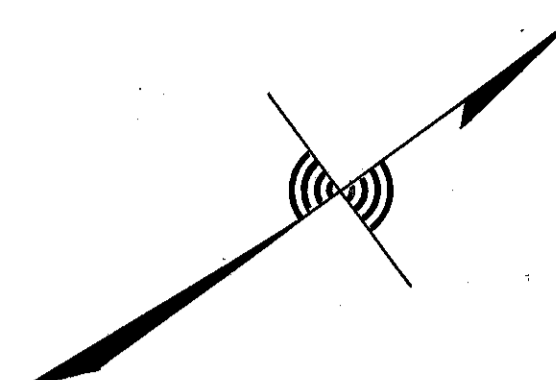


FED. RD. DIST. No.	STATE	FED. AID PROJECT	FISCAL YEAR
	OHIO		

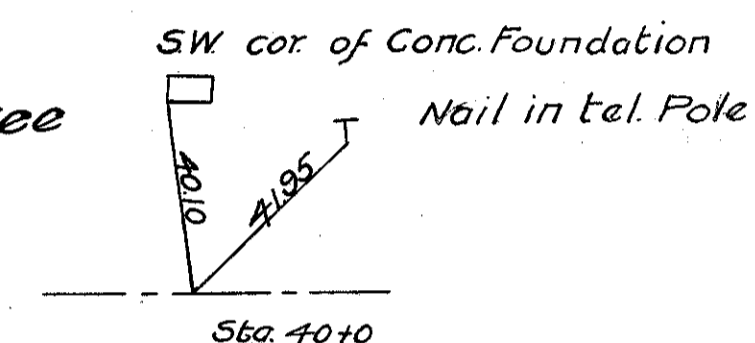
5/10

I.C.H. No 520 SEC. A
LAKE COUNTY

The Eastern Realty Co.



The Cleveland Trust Co. & Carl F. Bruch Trustee



Sta 33+0 Build 12'x20'
V.P. enc. culvert inlet on L.

Sta 36+0 Build 12'x20'
V.P. enc. culvert inlet on L.

B.M. #7 Sta. 32+92
Spike in tel. pole
29' L of ϕ Elev. 619.94

B.M. #8 Sta. 39+73
Spike in side of tel. pole
18' 60" R. of ϕ Elev. 622.27

