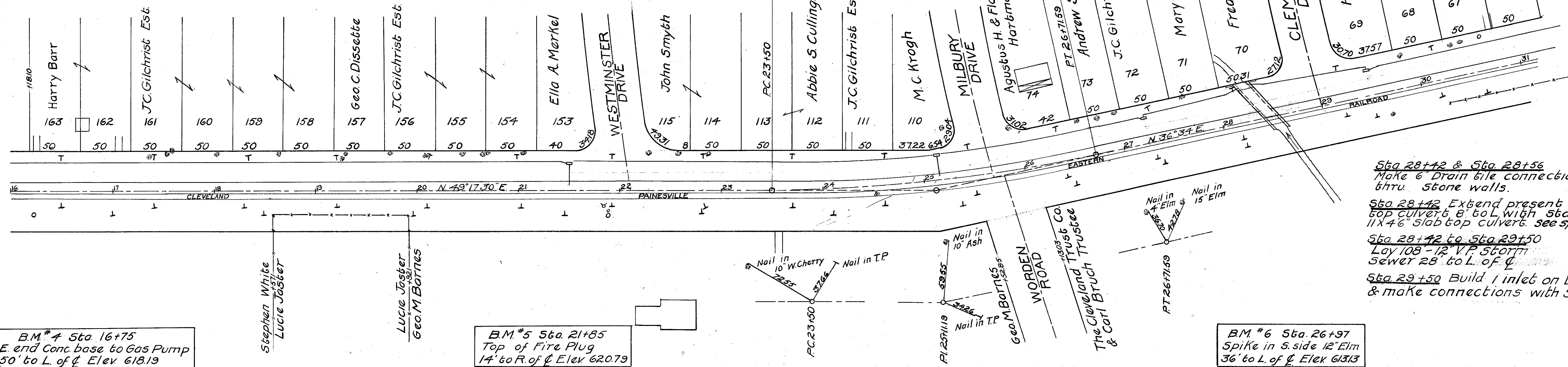


Sta 21+50 Build 12x20 V.P. etc. culvert 1 inlet on L.
 Sta 25+16 Build 12x20 V.P. etc. Culvert 1 inlet on L.
 Sta 27+25 Build 1 inlet on L. & make connections with sewer

$\Delta = 12^{\circ}43'30''$
 $D = 3^{\circ}57'$
 $R = 1750.81$
 $T = 161.19$
 $L = 321.59$

BROOKWOOD BEACH ESTATES

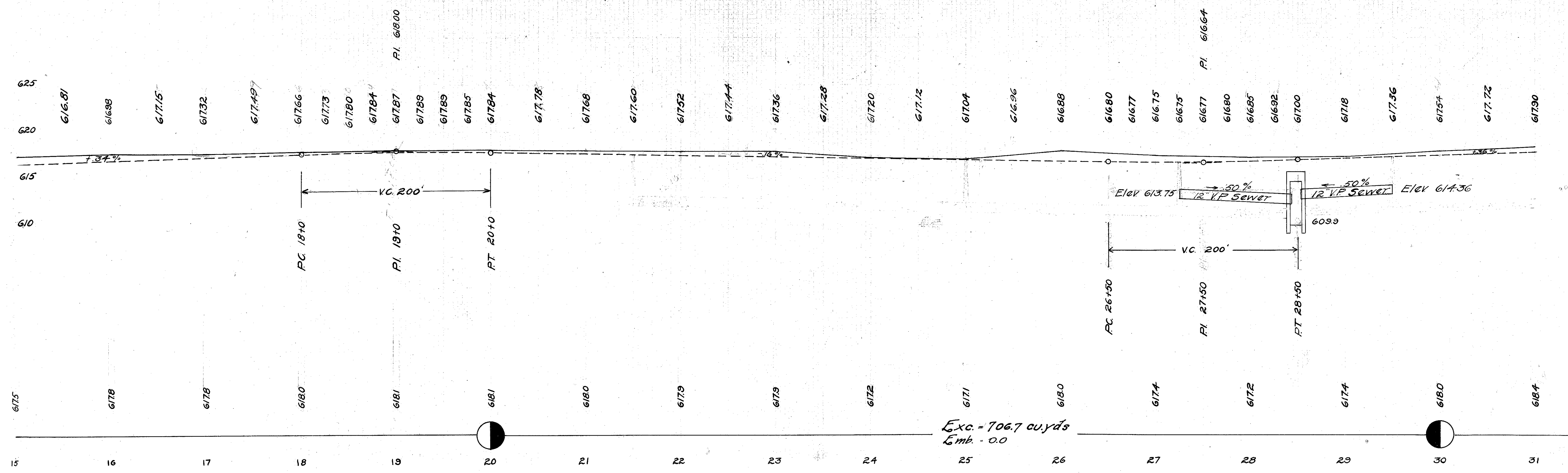


Sta 28+42 & Sta 28+56 Make 6" Drain tile connections thru stone walls.
 Sta 28+42 Extend present slab top culvert 8' to L. with 56d. 11x46" slab top culvert. see special plan
 Sta 28+42 to Sta 29+50 Lay 108"-12" V.P. storm sewer 28' to L. of C.
 Sta 29+50 Build 1 inlet on L. & make connections with sewer

B.M. #4 Sta 16+75
E. end Conc. base to Gas Pump
50' to L. of C. Elev 618.19

B.M. #5 Sta 21+85
Top of Fire Plug
14' to R. of C. Elev 620.79

B.M. #6 Sta. 26+97
Spike in S. side 12" Elm
36' to L. of C. Elev 613.13



Exc. = 706.7 cu. yds
Emb. = 0.0