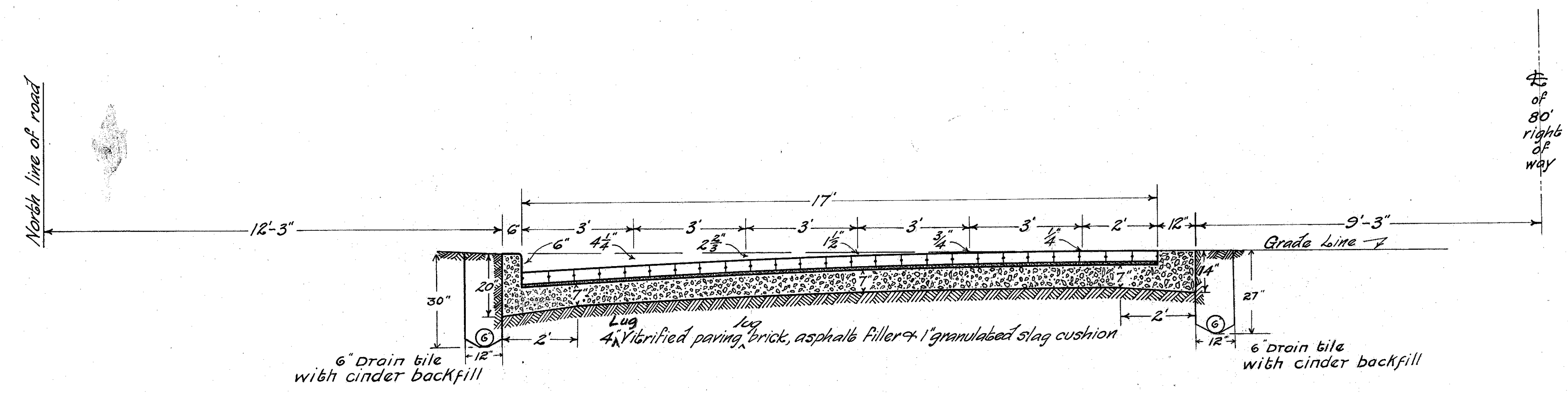
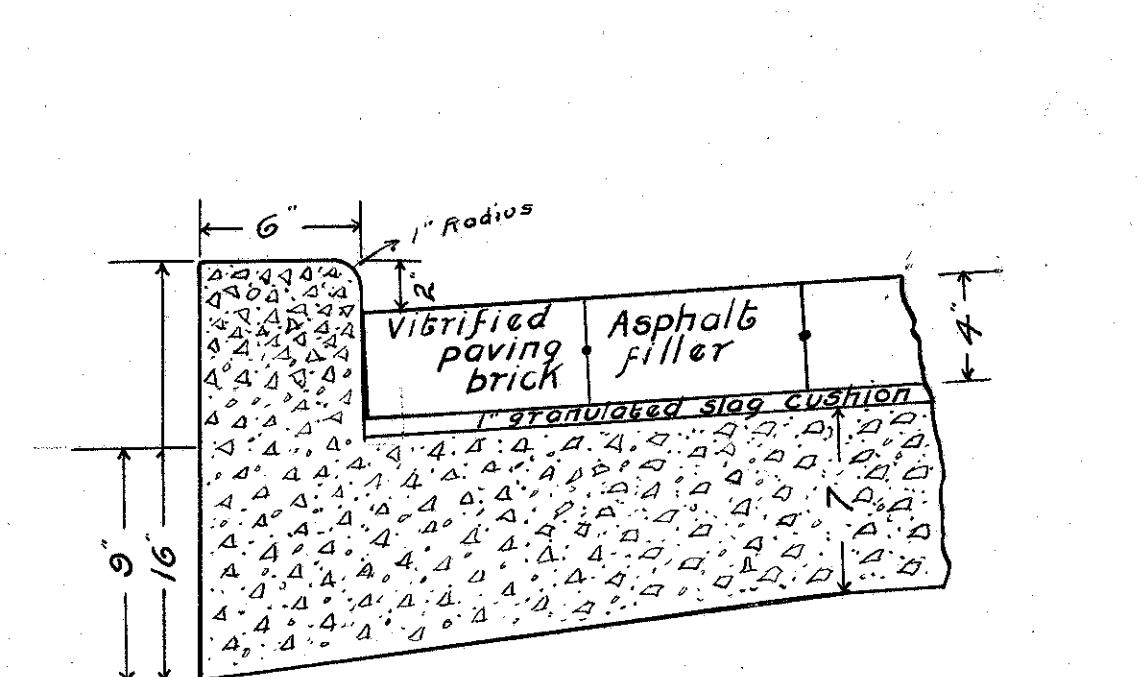


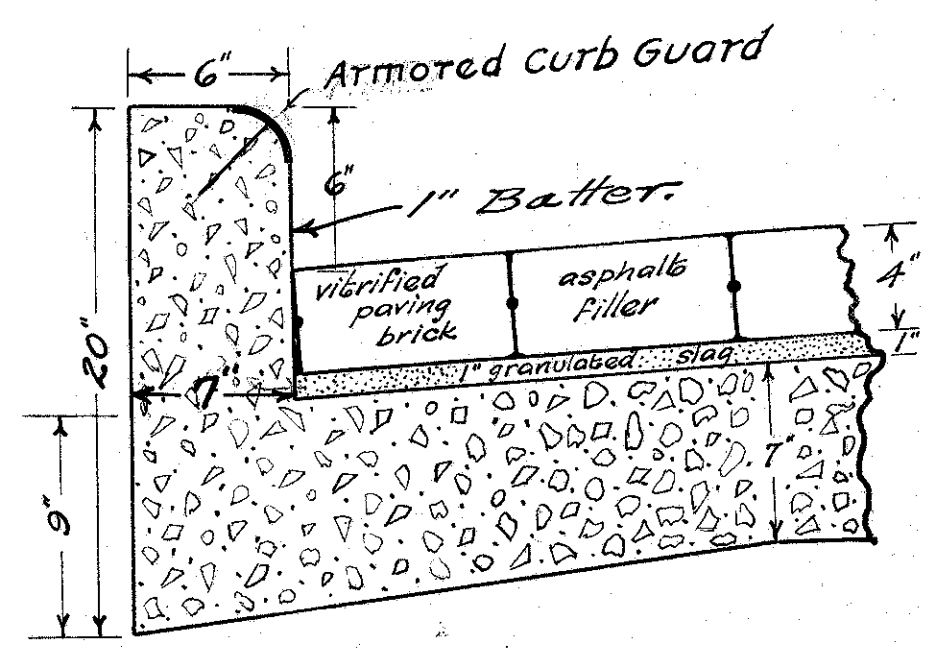
I.C.H. No 520 SEC. A
LAKE COUNTY



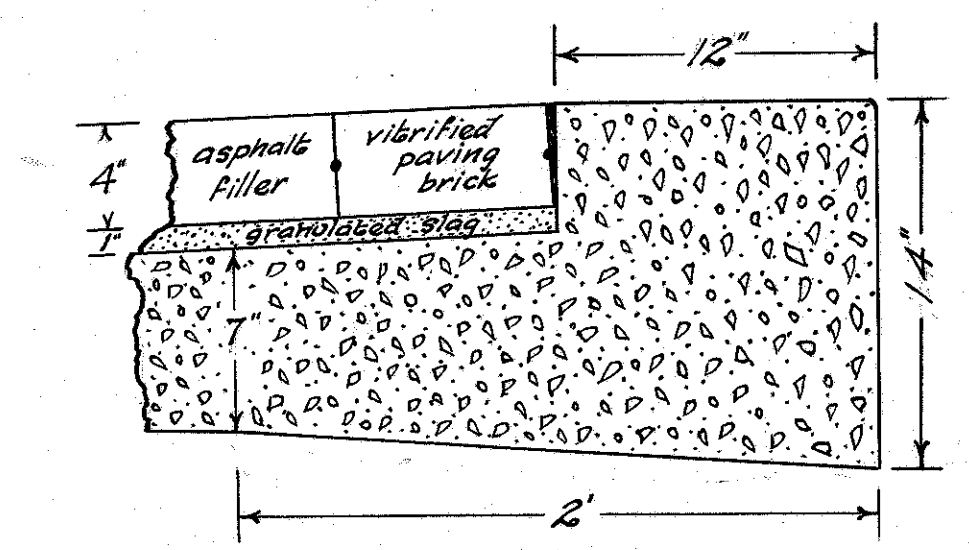
TYPE "B"
TYPICAL SECTION
SCALE IN FEET



Detail of integral concrete raised curb-lowered for driveways



Detail of integral concrete raised curb



Detail of integral concrete flush curb

Note: All materials removed from roadway which are not to be used as per contract shall be hauled to and dumped at \$60.50 ±