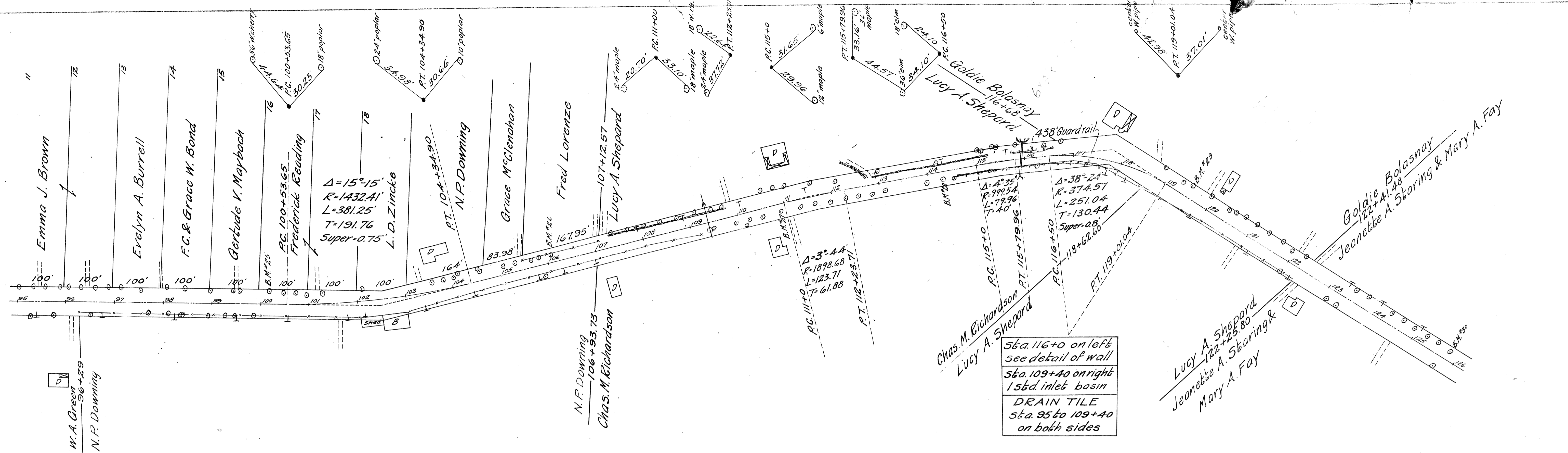


PLAN
 SURVEYED: _____ DATE: _____
 PLOTTED: _____
 NOTE BOOK: _____
 ALIGNMENT CHECKED: _____
 RT. OF WAY CHECKED: _____

PROFILE
 GRADES: _____
 PLOTTED: _____
 NOTE BOOK: _____
 B. M. S. NOTED: _____
 STRUCTURE NOTED: _____



Sta. 116+0 on left
 see detail of wall
 Sta. 109+40 on right
 15' inlet basin
 DRAIN TILE
 Sta. 95 to 109+40
 on both sides

Lucy A. Shepard
 Jeanette A. Staring &
 Mary A. Fay

B.M.*25 Sta. 100+18
 spike in 36" w. cherry
 25' to L of Φ
 Elev. = 617.69

B.M.*26 Sta. 106+08
 spike in 30" walnut
 17' to L of Φ
 Elev. = 615.38

B.M.*27 Sta. 110+89
 spike in 20" maple
 16' to R of Φ
 Elev. = 610.60

B.M.*28 Sta. 114+26
 spike in 12" maple
 16' to R of Φ
 Elev. = 596.22

B.M.*29 Sta. 119+50
 spike in 36" w. cherry
 24' to L of Φ
 Elev. = 616.98

B.M.*30 Sta. 125+81
 spike in 18" maple
 18' to L of Φ
 Elev. = 621.74

