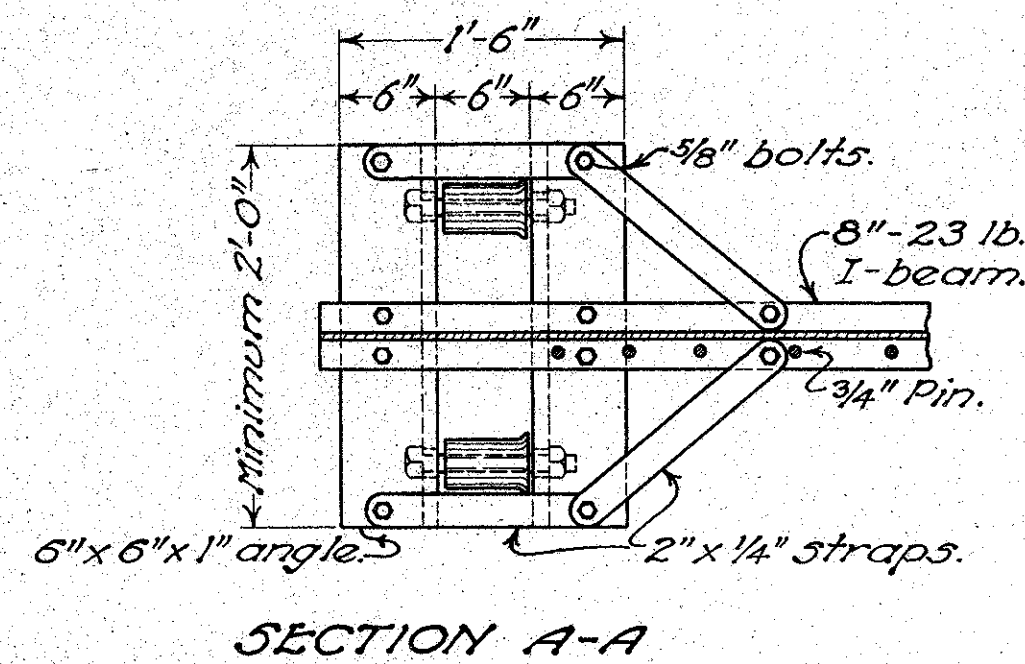
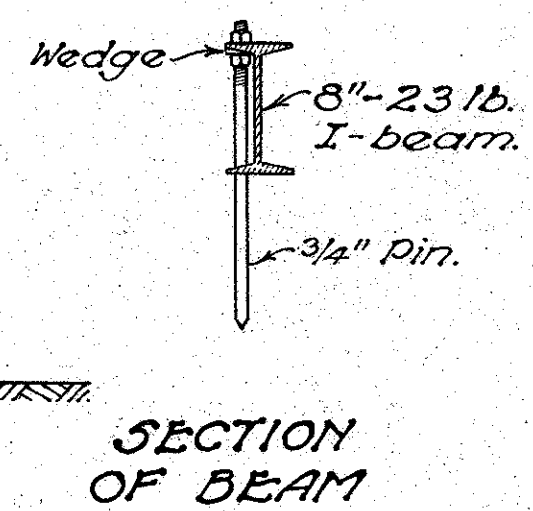
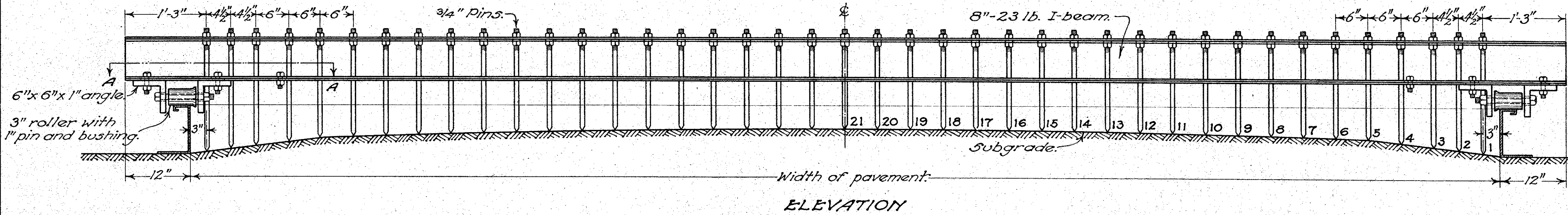


METAL SUBGRADE TEMPLAT



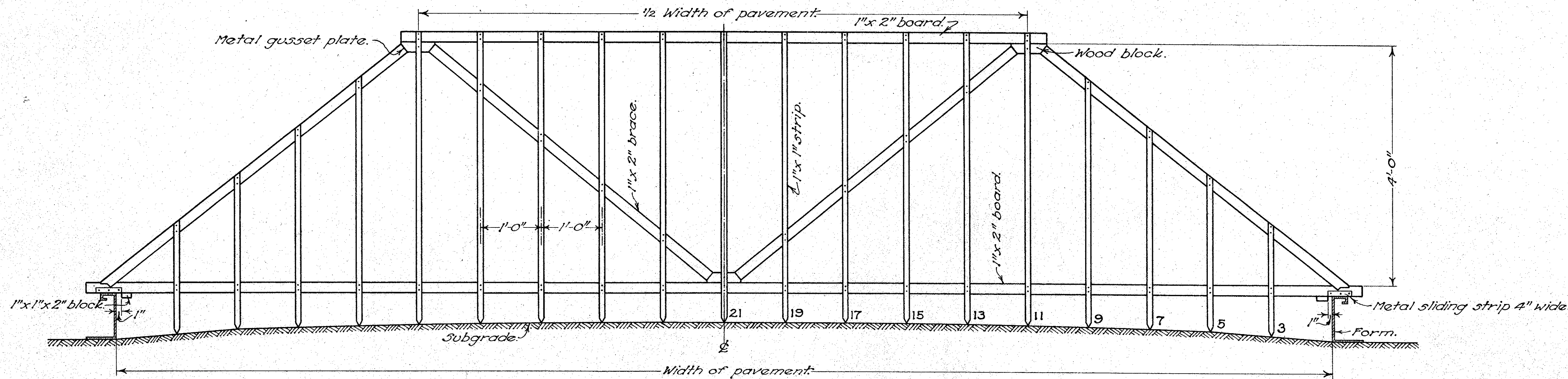
ORDINATES BELOW TOP OF FORMS FOR 20' PAVEMENT																						
PIN NUMBER	1	2	3	4	5	6	7	8	9	10	11	12	13	14	15	16	17	18	19	20	21	
FOR CONCRETE PAVEMENT ONLY (1 1/4" CROWN)																						
7"	6 29/32"	6 27/32"	6 25/32"	6 23/32"	6 21/32"	6 19/32"	6 17/32"	6 15/32"	6 13/32"	6 11/32"	6 9/32"	6 7/32"	6 5/32"	6 3/32"	6 1/32"	5 29/32"	5 27/32"	5 25/32"	5 23/32"	5 21/32"	5 19/32"	5 17/32"
8"	7 26/32"	7 24/32"	7 22/32"	7 20/32"	7 18/32"	7 16/32"	7 14/32"	7 12/32"	7 10/32"	7 8/32"	7 6/32"	7 4/32"	7 2/32"	7 0/32"	6 30/32"	6 28/32"	6 26/32"	6 24/32"	6 22/32"	6 20/32"	6 18/32"	6 16/32"
9"-7"-7"-9"	8 18/32"	8 16/32"	8 14/32"	8 12/32"	8 10/32"	8 8/32"	8 6/32"	8 4/32"	8 2/32"	7 30/32"	7 28/32"	7 26/32"	7 24/32"	7 22/32"	7 20/32"	7 18/32"	7 16/32"	7 14/32"	7 12/32"	7 10/32"	7 8/32"	7 6/32"
10"-8"-8"-10"	9 18/32"	9 16/32"	9 14/32"	9 12/32"	9 10/32"	9 8/32"	9 6/32"	9 4/32"	9 2/32"	8 30/32"	8 28/32"	8 26/32"	8 24/32"	8 22/32"	8 20/32"	8 18/32"	8 16/32"	8 14/32"	8 12/32"	8 10/32"	8 8/32"	8 6/32"
FOR ALL TYPES OF PAVEMENT EXCEPT CONCRETE (2" CROWN)																						
6"	5 29/32"	5 27/32"	5 25/32"	5 23/32"	5 21/32"	5 19/32"	5 17/32"	5 15/32"	5 13/32"	5 11/32"	5 9/32"	5 7/32"	5 5/32"	5 3/32"	5 1/32"	4 29/32"	4 27/32"	4 25/32"	4 23/32"	4 21/32"	4 19/32"	4 17/32"
7"	6 29/32"	6 27/32"	6 25/32"	6 23/32"	6 21/32"	6 19/32"	6 17/32"	6 15/32"	6 13/32"	6 11/32"	6 9/32"	6 7/32"	6 5/32"	6 3/32"	6 1/32"	5 29/32"	5 27/32"	5 25/32"	5 23/32"	5 21/32"	5 19/32"	5 17/32"
8"	7 29/32"	7 27/32"	7 25/32"	7 23/32"	7 21/32"	7 19/32"	7 17/32"	7 15/32"	7 13/32"	7 11/32"	7 9/32"	7 7/32"	7 5/32"	7 3/32"	7 1/32"	6 29/32"	6 27/32"	6 25/32"	6 23/32"	6 21/32"	6 19/32"	6 17/32"
9"	8 29/32"	8 27/32"	8 25/32"	8 23/32"	8 21/32"	8 19/32"	8 17/32"	8 15/32"	8 13/32"	8 11/32"	8 9/32"	8 7/32"	8 5/32"	8 3/32"	8 1/32"	7 29/32"	7 27/32"	7 25/32"	7 23/32"	7 21/32"	7 19/32"	7 17/32"

Note: Tables of offsets below top of forms for points of subgrade templet are 1/8" above specified depth of pavement.

NOTES

METAL SUBGRADE TEMPLAT:
 If metal center joint is used, pin No. 21 may be omitted.
 The method of checking the setting of the pins shall be accomplished by means of a line with the templet in its service position supported on its rollers.
 Templet is to be propelled by hand.
 Weight of the templet to be not less than 1000 lbs.

WOODEN SUBGRADE TEMPLAT



WOODEN SUBGRADE TEMPLAT:
 For setting and checking the points of this templet, apply the table of ordinates given for the Metal Subgrade Templet.

BUREAU OF CONSTRUCTION OHIO DEPARTMENT OF HIGHWAYS	OCT. 1933
SUBGRADE TEMPLATS	
STANDARD CONSTRUCTION DRAWING B-T-50-70-71 E. No. 1	
APPROVED: <i>E. J. [Signature]</i> CHIEF ENGR. CONST.	