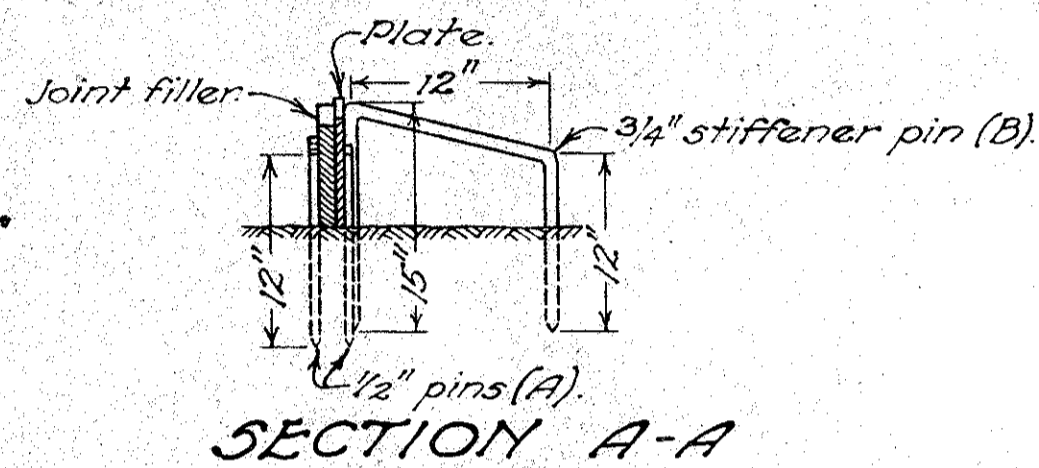
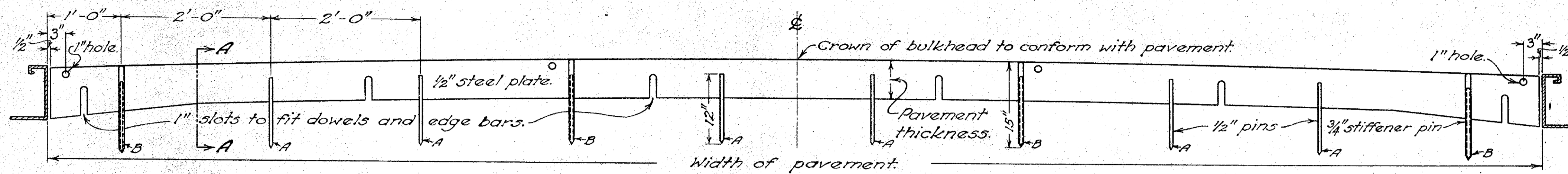
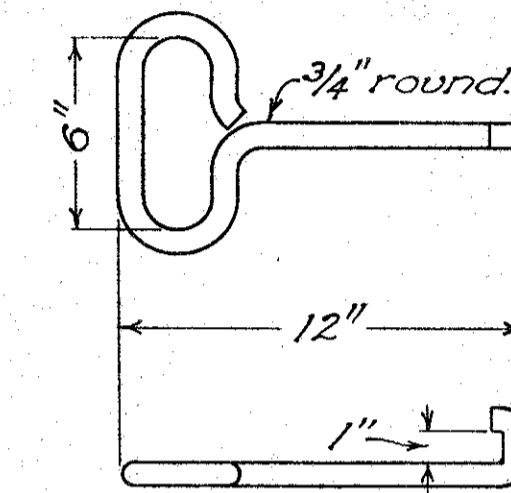


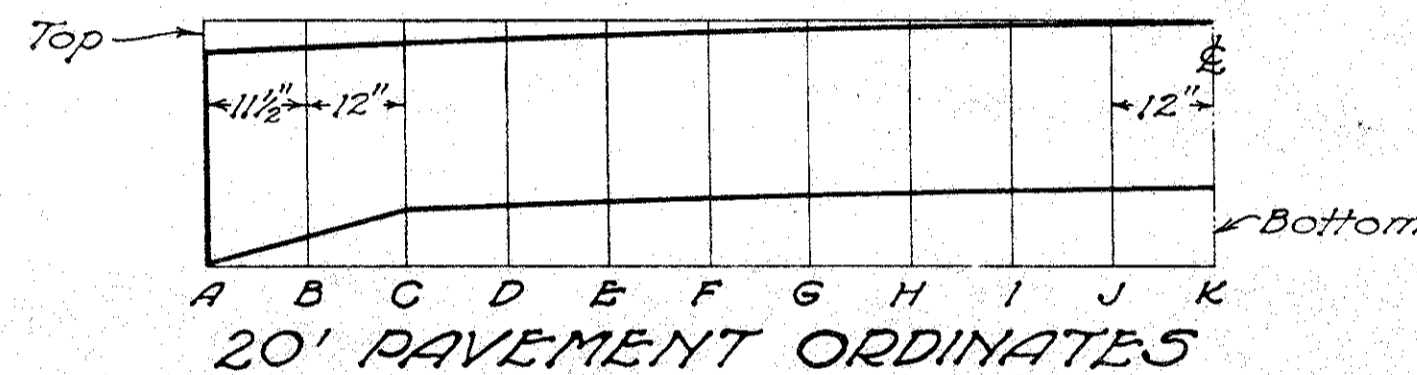
STEEL BULKHEAD FOR PLACING PREMOULDED EXPANSION JOINT



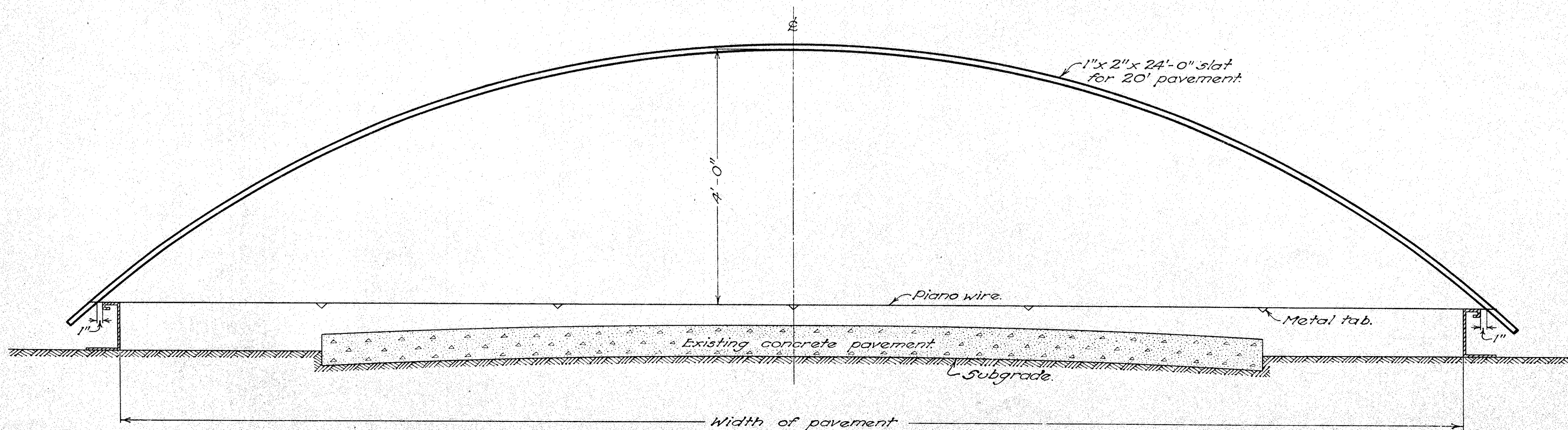
		20' PAVEMENT ORDINATES											
ORDINATE	7"			8"			9"-7"-7"-9"			10"-8"-8"-10"			
	BOTTOM	SLAB	TOP	BOTTOM	SLAB	TOP	BOTTOM	SLAB	TOP	BOTTOM	SLAB	TOP	
A	0"	7"	1 1/64"	0"	8"	1 1/64"	0"	8 5/64"	1 1/64"	0"	9 5/64"	1 1/64"	
B	1 2/64"	7"	1 4/64"	1 2/64"	8"	1 4/64"	1 9/64"	8"	1 4/64"	1 9/64"	9"	1 4/64"	
C	2 3/64"	7"	5 1/64"	2 3/64"	8"	5 1/64"	2 29/64"	7"	5 1/64"	2 29/64"	8"	5 1/64"	
D	3 4/64"	7"	4 9/64"	3 4/64"	8"	4 9/64"	2 31/64"	7"	4 9/64"	2 31/64"	8"	4 9/64"	
E	4 3/64"	7"	3 7/64"	4 3/64"	8"	3 7/64"	2 49/64"	7"	3 7/64"	2 49/64"	8"	3 7/64"	
F	5 1/64"	7"	2 9/64"	5 1/64"	8"	2 9/64"	2 48/64"	7"	2 9/64"	2 48/64"	8"	2 9/64"	
G	5 9/64"	7"	2 1/64"	5 9/64"	8"	2 1/64"	2 56/64"	7"	2 1/64"	2 56/64"	8"	2 1/64"	
H	1 2/64"	7"	1 4/64"	1 2/64"	8"	1 4/64"	2 63/64"	7"	1 4/64"	2 63/64"	8"	1 4/64"	
I	1 7/64"	7"	3/64"	1 7/64"	8"	3/64"	3 4/64"	7"	3/64"	3 4/64"	8"	3/64"	
J	1 12/64"	7"	4/64"	1 12/64"	8"	4/64"	3 9/64"	7"	4/64"	3 9/64"	8"	4/64"	
K	1 16/64"	7"	0"	1 16/64"	8"	0"	3 13/64"	7"	0"	3 13/64"	8"	0"	



DETAIL OF HOOK FOR LIFTING BULKHEAD



STRAIGHT EDGE FOR ESTIMATING CONCRETE RESURFACING



NOTES

PINS:
Pins "A" shall be left in place, and pins "B" shall be removed after the concrete has been placed on both sides of the joint.

PREMOULDED MATERIAL:
The pre moulded material shall be fastened to the steel bulkhead before being placed by either wire or line, and the same shall be set at right angle to center line and perpendicular to the finished subgrade by the use of 4 ft. square. Slots in the pre moulded material will be permitted only for edge bars. This slot shall be a self-closing single cut.

DOWEL BARS:
Dowel bars shall be inserted after the pre moulded material is in position without slotting.

NOTES

STRAIGHT EDGE:
Wire Straight Edge to be used in cross-sectioning old pavement after forms are set to determine the cubic yards of concrete used in resurfacing.

METAL TABS:
Metal tabs are to be fastened securely to the wire at points where readings are to be taken.

BUREAU OF LOCATION & DESIGN OHIO DEPARTMENT OF HIGHWAYS	9-1933 10-1933
CONCRETE PAVEMENT EQUIPMENT	
STANDARD CONSTRUCTION DRAWING T-70-71 E. No. 1	
APPROVED <i>K.L.R.</i> CHIEF ENGINEER	