

FINAL SURVEY PLOTTED BY DATE  
 NOTE BOOK NO. AREAS CHECKED

ORIGINAL SURVEY PLOTTED BY DATE  
 NOTE BOOK NO. AREAS CHECKED

**MONUMENT BOX & BENCH MARK ASSEMBLY**

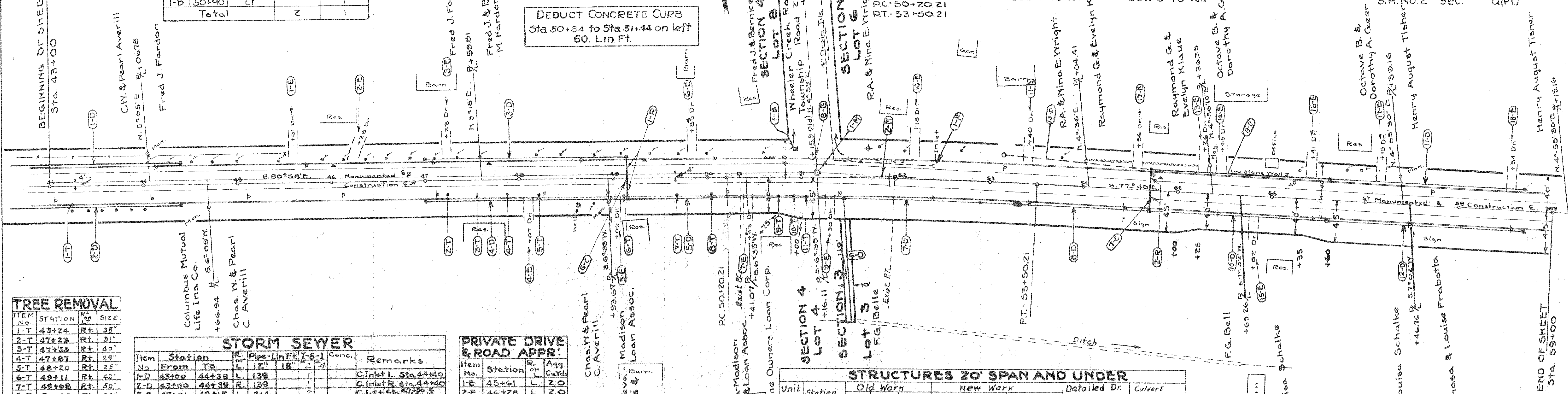
Item No.	Station	Side	Mon. Box	Bench Mk.
1-M	51+15.9	Lt.	1	
2-M	51+85.27	238 Lt.		
1-B	50+90	Lt.		1
Total			2	1

EXISTING CURVE  
 P.I. = 51+15.9  
 Δ = 3°18' Rt.  
 D. = 270.0  
 E.T. = 1.19  
 L.T. = 82.50  
 R. = 2865.00

CONSTRUCTION  
 P.I. = 51+85.27  
 Δ = 3°18' Rt.  
 D. = 270.0  
 E.T. = 1.19  
 L.T. = 82.50  
 R. = 2865.00

DEDUCT CONCRETE CURB  
 Sta 50+64 to Sta 51+44 on left  
 60. Lin. Ft.

ASHTABULA COUNTY  
 S.H. NO. 2 Sec. M(PT)  
 LAKE COUNTY  
 S.H. NO. 2 Sec. Q(PT)



**TREE REMOVAL**

ITEM No.	STATION	Rt.	SIZE
1-T	43+24	Rt.	38"
2-T	47+23	Rt.	31"
3-T	47+55	Rt.	40"
4-T	47+87	Rt.	29"
5-T	48+20	Rt.	25"
6-T	49+11	Rt.	42"
7-T	49+68	Rt.	50"
8-T	50+05	Rt.	20"
9-T	50+75	Rt.	9"
10-T	50+91	Rt.	10"
11-T	51+05	Rt.	10"
TOTAL = 11			

**STORM SEWER**

Item No.	Station	Rt.	Pipe	Lin. Ft.	Conc.	Remarks
1-D	43+00	Lt.	12"	18	1	C. Inlet L. Sta. 44+40
2-D	43+00	Lt.	12"	18	1	C. Inlet R. Sta. 44+40
3-D	47+01	Lt.	12"	214	2	C. Inlet R. Sta. 47+00
4-D	47+01	Lt.	12"	214	1	C. Inlet R. Sta. 47+00
5-D	49+17	Lt.	12"	228	1	C. Inlet R. Sta. 49+16
6-D	51+46	Lt.	12"	180	1	Outlet Rt. to Creek
7-D	51+47	Lt.	12"	180	1	C. Inlet R. Sta. 51+46
8-D	53+31	Lt.	12"	135	1	C. Inlet R. Sta. 53+29
9-D	54+71	Lt.	12"	189	1	C. Inlet L. Sta. 54+70
10-D	54+71	Lt.	12"	208	2	C. I. R. Sta. 56+60 & 54+70
11-D	56+61	Lt.	12"	208	2	C. I. R. Sta. 56+60 & 58+70
12-D	58+69	Lt.	12"	208	1	C. I. R. Sta. 58+70
Totals 2064 30 13 1 0.9						

**PRIVATE DRIVE & ROAD APPR.**

Item No.	Station	Rt.	Agg. Cu. Yds.
1-E	45+61	Lt.	2.0
2-E	46+28	Lt.	2.0
3-E	47+23	Lt.	2.0
4-E	48+07	Rt.	3.0
5-E	49+02	Rt.	4.0
6-E	49+85	Lt.	3.0
7-E	50+43	Rt.	4.0
8-E	51+16	Lt.	15.0
9-E	51+30	Rt.	4.0
10-E	52+18	Lt.	2.0
11-E	53+40	Lt.	2.0
12-E	54+56	Lt.	2.0
13-E	55+26	Lt.	2.0
14-E	55+45	Lt.	2.0
15-E	55+82	Rt.	5.0
16-E	56+41	Lt.	2.0
17-E	57+15	Lt.	2.0
18-E	58+54	Lt.	2.0
Total = 60			

**STRUCTURES 20' SPAN AND UNDER**

Unit No.	Station	Type	Size	Length	Detailed Dr. Sheet No.	Culvert No.
6-C	49+16	Pipe	15"	42' 3/4"	36	NEW
7-C	54+70	Pipe	15"	42' 3/4"	36	NEW

**CONCRETE SIDEWALK (Lt.)**  
 Sta. 43+00 to 59+00 = 1600 Lin. Ft.  
 Wheeler Creek Rd. - 55 Lin. Ft.  
 12 Drives @ 20' = 240' x 4' = 960 Sq. Ft. 6" Sidewalk  
 Deduction For Inlets  
 3 - 2 @ 5.0' = 15.0 Sq. Ft.  
 (545 - 240) x 4 - 15 = 5205 Sq. Ft. 4" Walk

**TRENCH REINFORCING**

Item No.	Station	No. Bars	Size	Length	Weight Lbs.
1-R	49+16	44	3/8"	14'	643
2-R	54+70	44	3/8"	14'	643
Total = 1286 Lbs.					

**INLETS PARTIALLY REM. & CAPPED AS DIRECTED**

Item No.	Station	Side	Number (each)
1-F	52+40.6	Lt.	1
Total 1			

**STORM SEWER OUTLET (51+46)**  
 Note - Widen private drive to provide cover for outlet pipe

